

Market Analysis By State: Texas

Property Type	Closed Sales*	YoY%	Dollar Volume	YoY%	Average Price	YoY%	Median Price	YoY%	Price/Sqft	YoY%	DOM	New Listings	Active Listings	Pending Sales	Months Inventory	Close To OLP
All(New and Existing)																
Residential (SF/COND/TH)	24,891	8.8%	\$10,477,763,864	14.0%	\$420,946	4.8%	\$333,000	2.5%	\$188	1.4%	63	36,739	126,437	23,640	4.6	93.9%
YTD:	303,896	-0.4%	\$128,034,443,088	1.5%	\$421,310	1.9%	\$339,000	1.2%	\$191	0.9%	59	515,497	116,080	309,065		94.8%
Single Family	23,655	9.8%	\$10,051,031,502	15.1%	\$424,901	4.8%	\$335,000	1.8%	\$186	1.9%	62	34,277	116,308	22,395	4.5	94.0%
YTD:	287,049	0.2%	\$122,058,230,027	2.0%	\$425,217	1.8%	\$340,000	0.2%	\$189	1.1%	59	479,333	106,855	292,071		94.9%
Townhouse	548	-4.9%	\$194,286,220	-6.6%	\$354,537	-1.8%	\$321,721	-0.2%	\$194	-1.1%	56	1,069	3,626	556	5.3	94.9%
YTD:	7,696	-4.4%	\$2,762,893,392	-2.9%	\$359,004	1.6%	\$325,000	-0.3%	\$196	1.0%	55	14,977	3,208	7,800		95.4%
Condominium	672	-9.4%	\$227,946,607	-7.6%	\$339,206	2.0%	\$245,000	-1.9%	\$256	-3.1%	78	1,393	6,503	689	8.0	91.9%
YTD:	9,123	-14.0%	\$3,204,927,622	-10.7%	\$351,302	3.9%	\$257,500	2.2%	\$264	0.1%	64	21,187	6,017	9,194		93.4%
Existing Home																
Residential (SF/COND/TH)	17,418	10.0%	\$7,359,099,524	16.8%	\$422,500	6.3%	\$325,000	3.2%	\$189	2.0%	57	27,264	93,902	16,086	4.7	93.8%
YTD:	223,155	-2.6%	\$94,260,507,312	1.4%	\$422,399	4.1%	\$330,000	1.9%	\$192	2.0%	52	394,582	85,614	225,078		94.7%
Single Family	16,348	11.0%	\$7,017,453,411	18.3%	\$429,255	6.6%	\$330,000	3.5%	\$187	2.7%	57	25,148	85,399	15,031	4.6	93.9%
YTD:	208,673	-2.1%	\$89,346,948,378	1.9%	\$428,167	4.0%	\$335,000	3.1%	\$189	2.3%	52	363,484	77,947	210,513		94.8%
Townhouse	433	1.6%	\$146,835,656	-0.4%	\$339,112	-2.0%	\$301,000	-1.5%	\$188	-0.9%	51	827	2,627	410	5.0	94.6%
YTD:	5,877	-2.7%	\$2,038,837,780	-0.4%	\$346,918	2.3%	\$305,000	0.0%	\$191	2.2%	47	11,495	2,265	5,935		95.4%
Condominium	623	-9.2%	\$191,323,986	-11.8%	\$307,101	-2.9%	\$230,000	-2.3%	\$247	-4.4%	75	1,289	5,876	645	7.7	92.0%
YTD:	8,578	-13.6%	\$2,866,707,867	-10.6%	\$334,193	3.4%	\$247,000	1.9%	\$259	0.4%	63	19,603	5,402	8,630		93.4%
New Construction																
Residential (SF/COND/TH)	7,460	6.1%	\$3,112,986,723	7.6%	\$417,290	1.4%	\$348,453	-0.2%	\$187	0.0%	75	9,475	32,535	7,554	4.4	94.1%
YTD:	80,714	6.2%	\$33,762,252,371	2.0%	\$418,295	-4.0%	\$350,006	-4.4%	\$190	-2.2%	77	120,915	30,466	83,987		95.1%
Single Family	7,296	6.9%	\$3,028,362,822	8.1%	\$415,072	1.1%	\$346,523	-0.4%	\$185	0.1%	75	9,129	30,909	7,364	4.3	94.1%
YTD:	78,355	6.9%	\$32,701,525,977	2.4%	\$417,351	-4.2%	\$350,000	-4.1%	\$188	-2.0%	77	115,849	28,908	81,558		95.1%
Townhouse	114	-24.0%	\$46,968,398	-22.3%	\$412,003	2.2%	\$364,373	-4.8%	\$216	0.8%	74	242	999	146	6.0	95.8%
YTD:	1,813	-9.8%	\$721,759,402	-9.5%	\$398,102	0.3%	\$368,480	-2.3%	\$215	-1.4%	79	3,482	943	1,865		95.4%
Condominium	47	-16.1%	\$35,854,175	20.7%	\$762,855	43.8%	\$503,861	14.0%	\$379	10.8%	113	104	627	44	12.7	90.7%
YTD:	543	-21.0%	\$337,393,696	-11.1%	\$621,351	12.5%	\$476,250	1.3%	\$343	-2.0%	88	1,584	615	564		93.7%

* Closed Sale counts for most recent 3 months are Preliminary.

Trend Analysis By State: Texas

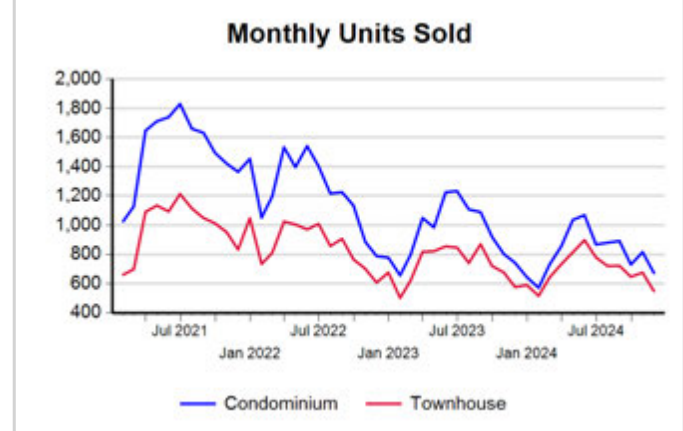
Residential, All (New and Existing)



Single Family, New vs. Existing



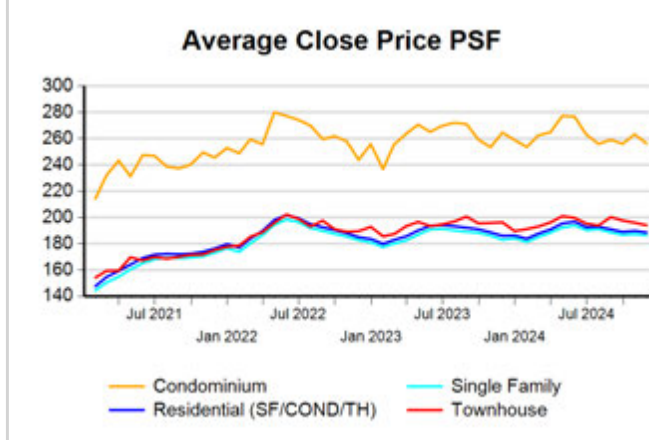
COND/TH, All (New and Existing)



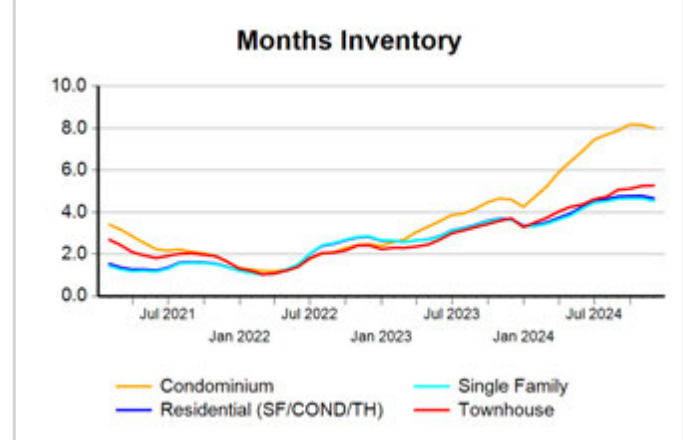
All (New and Existing) Construction



All (New and Existing) Construction



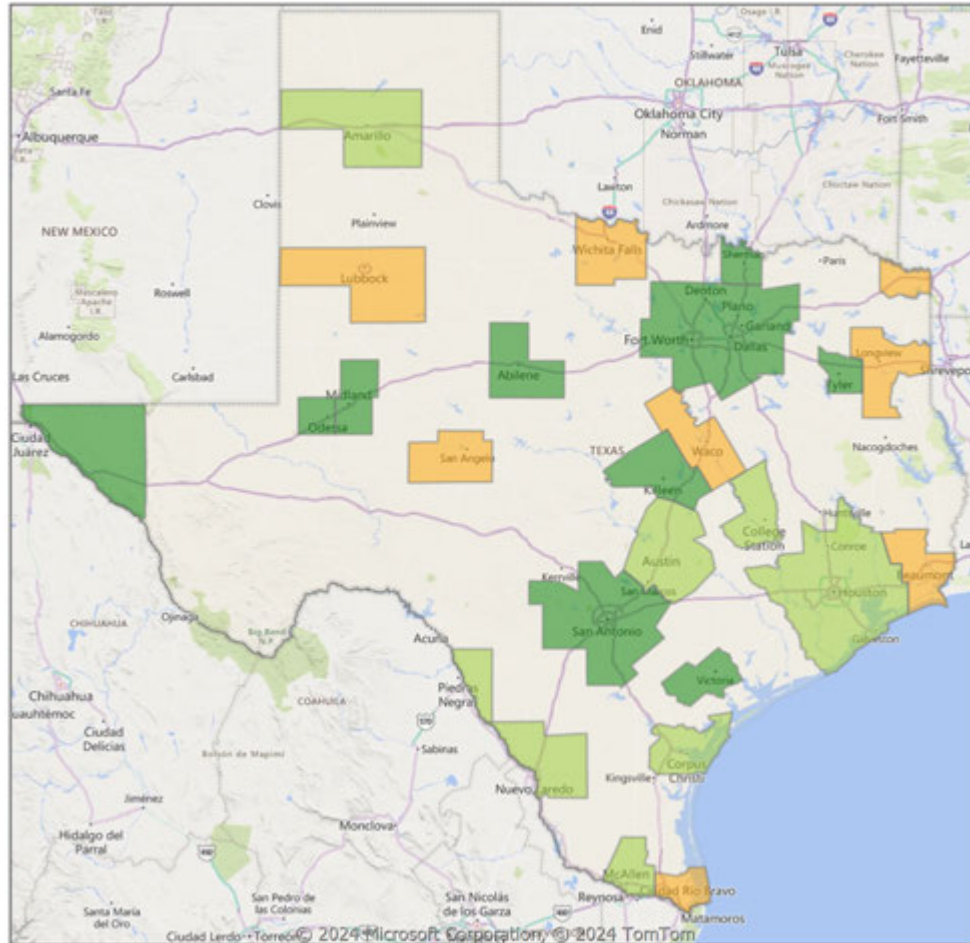
All (New and Existing) Construction



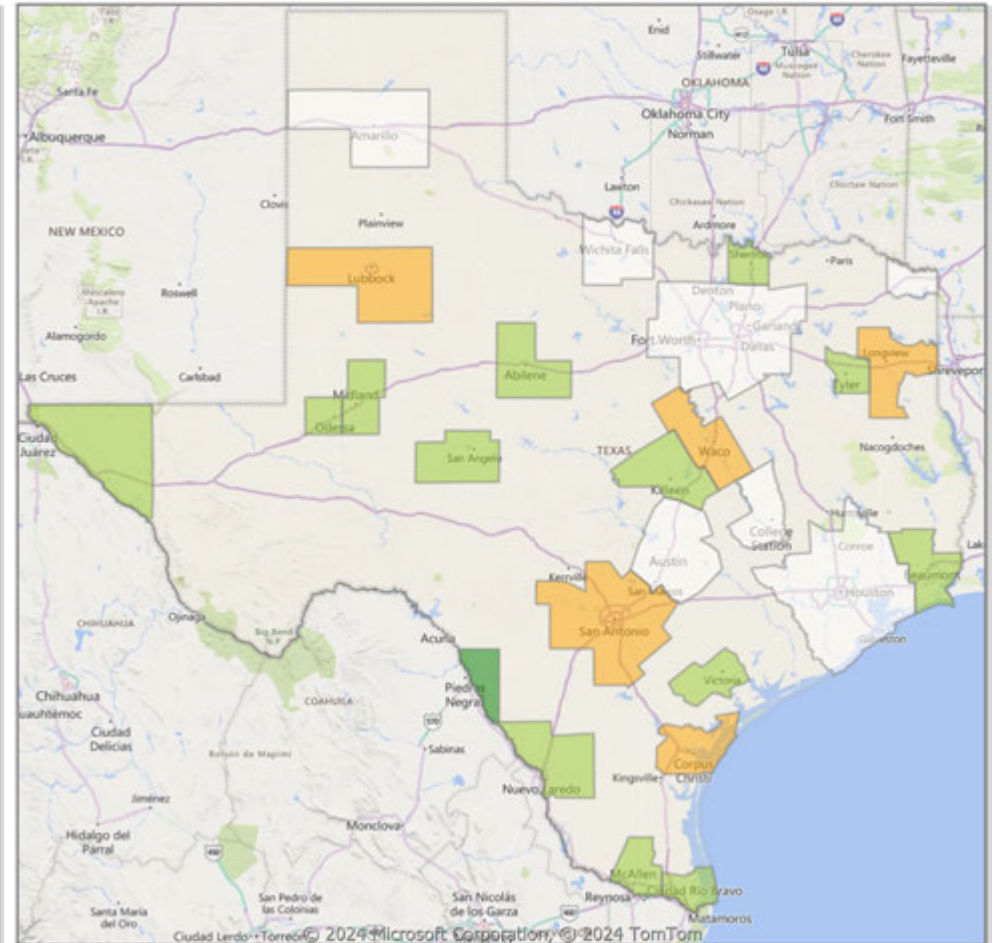
* Closed Sale counts for most recent 3 months are Preliminary.

Comparison By Metropolitan Statistical Area in Texas

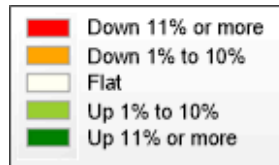
Residential* Closed Sales YoY Percentage Change



Residential* Avg Close Price Per SqFt YoY Percentage Change

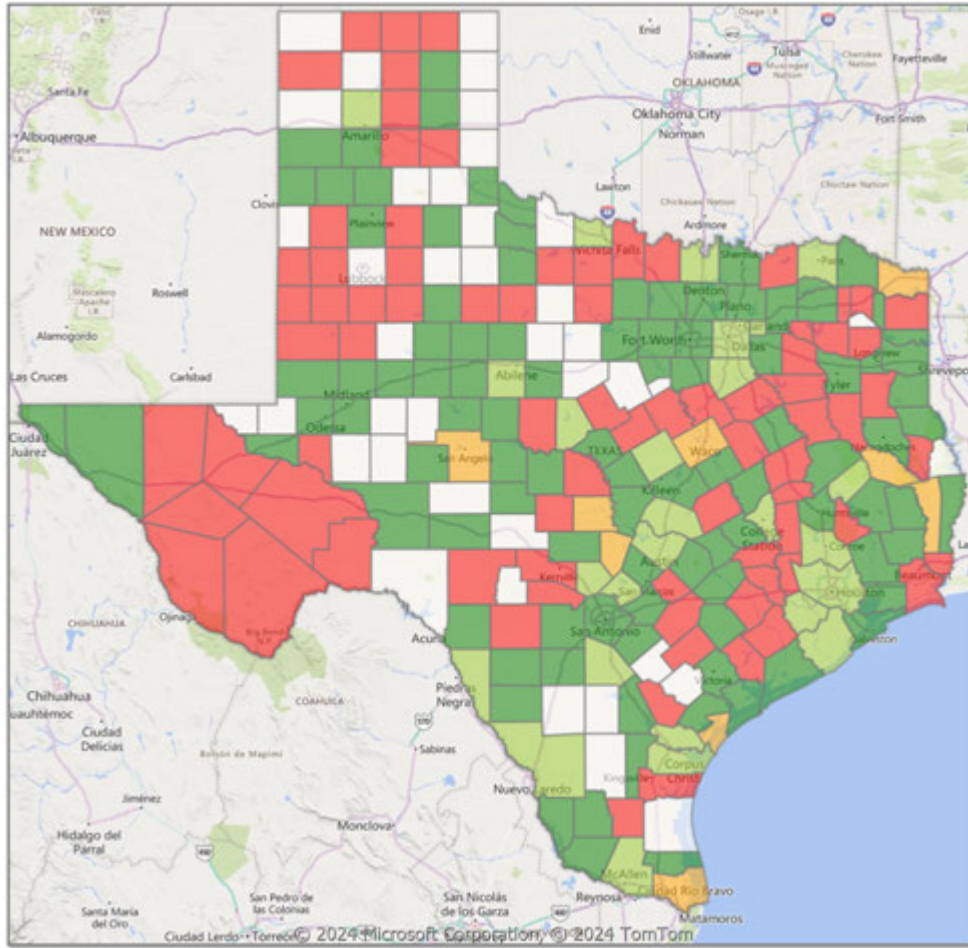


* Residential includes Single Family, Condominium and Townhouse.

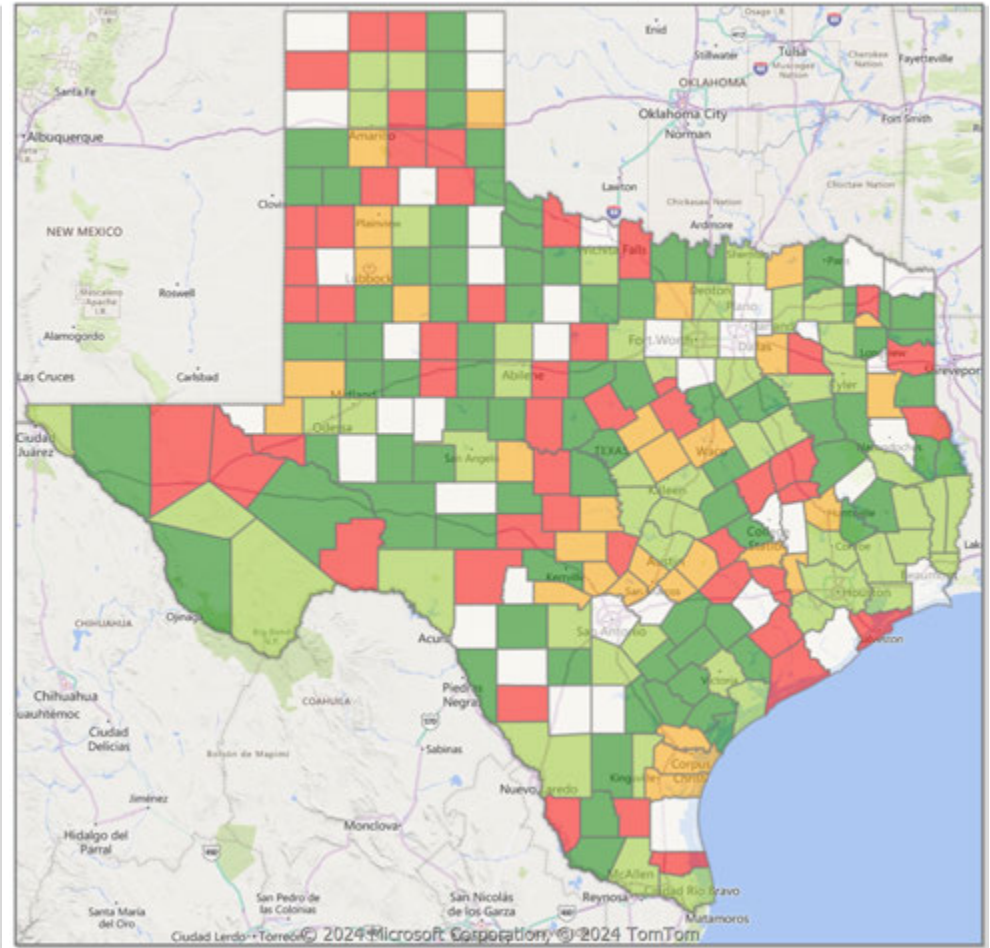


Comparison By County in Texas

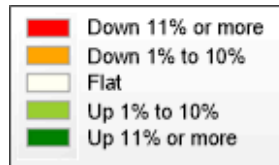
**Residential* Closed Sales
YoY Percentage Change**



**Residential* Avg Close Price Per SqFt
YoY Percentage Change**



* Residential includes Single Family, Condominium and Townhouse.



Market Analysis By County: Blanco County

Property Type	Closed Sales*	YoY%	Dollar Volume	YoY%	Average Price	YoY%	Median Price	YoY%	Price/Sqft	YoY%	DOM	New Listings	Active Listings	Pending Sales	Months Inventory	Close To OLP
All(New and Existing)																
Residential (SF/COND/TH)	10	-9.1%	\$5,038,556	-22.5%	\$503,856	-14.8%	\$420,000	-29.4%	\$274	-23.3%	177	23	148	7	11.6	95.7%
YTD:	146	-7.0%	\$82,048,366	-12.0%	\$561,975	-5.4%	\$468,000	-0.4%	\$322	9.4%	106	330	158	143		93.4%
Single Family	10	-9.1%	\$5,038,556	-22.5%	\$503,856	-14.8%	\$420,000	-29.4%	\$274	-23.3%	177	23	147	7	11.5	95.7%
YTD:	146	-7.0%	\$82,048,366	-12.0%	\$561,975	-5.4%	\$468,000	-0.4%	\$322	9.4%	106	327	157	143		93.4%
Townhouse	-	0.0%	-	0.0%	-	0.0%	-	0.0%	-	0.0%	-	-	-	-	-	0.0%
YTD:	-	0.0%	-	0.0%	-	0.0%	-	0.0%	-	0.0%	-	-	-	-	-	0.0%
Condominium	-	0.0%	-	0.0%	-	0.0%	-	0.0%	-	0.0%	-	-	1	-	-	0.0%
YTD:	-	0.0%	-	0.0%	-	0.0%	-	0.0%	-	0.0%	-	3	1	-	-	0.0%
Existing Home																
Residential (SF/COND/TH)	8	14.3%	\$4,211,200	-1.3%	\$526,400	-13.7%	\$380,000	-39.2%	\$285	-31.5%	105	14	113	6	12.2	95.8%
YTD:	105	5.0%	\$62,352,242	9.7%	\$593,831	4.4%	\$489,500	5.2%	\$355	15.7%	93	240	106	105		92.4%
Single Family	8	14.3%	\$4,211,200	-1.3%	\$526,400	-13.7%	\$380,000	-39.2%	\$285	-31.5%	105	14	112	6	12.1	95.8%
YTD:	105	5.0%	\$62,352,242	9.7%	\$593,831	4.4%	\$489,500	5.2%	\$355	15.7%	93	237	105	105		92.4%
Townhouse	-	0.0%	-	0.0%	-	0.0%	-	0.0%	-	0.0%	-	-	-	-	-	0.0%
YTD:	-	0.0%	-	0.0%	-	0.0%	-	0.0%	-	0.0%	-	-	-	-	-	0.0%
Condominium	-	0.0%	-	0.0%	-	0.0%	-	0.0%	-	0.0%	-	-	1	-	-	0.0%
YTD:	-	0.0%	-	0.0%	-	0.0%	-	0.0%	-	0.0%	-	3	1	-	-	0.0%
New Construction																
Residential (SF/COND/TH)	2	-50.0%	\$849,900	-62.0%	\$424,950	-24.0%	\$424,950	-28.6%	\$236	-7.4%	430	9	35	1	10.0	95.2%
YTD:	41	-28.1%	\$19,727,980	-45.8%	\$481,170	-24.7%	\$435,000	-7.4%	\$235	-13.6%	140	90	52	38		95.9%
Single Family	2	-50.0%	\$849,900	-62.0%	\$424,950	-24.0%	\$424,950	-28.6%	\$236	-7.4%	430	9	35	1	10.0	95.2%
YTD:	41	-28.1%	\$19,727,980	-45.8%	\$481,170	-24.7%	\$435,000	-7.4%	\$235	-13.6%	140	90	52	38		95.9%
Townhouse	-	0.0%	-	0.0%	-	0.0%	-	0.0%	-	0.0%	-	-	-	-	-	0.0%
YTD:	-	0.0%	-	0.0%	-	0.0%	-	0.0%	-	0.0%	-	-	-	-	-	0.0%
Condominium	-	0.0%	-	0.0%	-	0.0%	-	0.0%	-	0.0%	-	-	-	-	-	0.0%
YTD:	-	0.0%	-	0.0%	-	0.0%	-	0.0%	-	0.0%	-	-	-	-	-	0.0%

* Closed Sale counts for most recent 3 months are Preliminary.

Market Analysis By County: Gillespie County

Property Type	Closed Sales*	YoY%	Dollar Volume	YoY%	Average Price	YoY%	Median Price	YoY%	Price/Sqft	YoY%	DOM	New Listings	Active Listings	Pending Sales	Months Inventory	Close To OLP
All(New and Existing)																
Residential (SF/COND/TH)	34	17.2%	\$28,895,231	26.9%	\$849,860	8.3%	\$487,990	-15.2%	\$351	-10.3%	94	49	376	31	10.4	93.7%
YTD:	405	20.9%	\$259,170,944	6.0%	\$639,928	-12.4%	\$481,650	-12.4%	\$330	-7.6%	107	863	343	269		92.0%
Single Family	34	17.2%	\$28,895,231	26.9%	\$849,860	8.3%	\$487,990	-15.2%	\$351	-10.3%	94	47	365	30	10.1	93.7%
YTD:	405	22.4%	\$259,170,944	6.9%	\$639,928	-12.6%	\$481,650	-12.4%	\$330	-8.1%	107	838	323	268		92.0%
Townhouse	-	0.0%	-	0.0%	-	0.0%	-	0.0%	-	0.0%	-	-	-	-	-	0.0%
YTD:	-	-100.0%	-	-100.0%	-	-100.0%	-	-100.0%	-	-100.0%	-	-	-	-	-	0.0%
Condominium	-	0.0%	-	0.0%	-	0.0%	-	0.0%	-	0.0%	-	2	11	1	132.0	0.0%
YTD:	-	0.0%	-	0.0%	-	0.0%	-	0.0%	-	0.0%	-	25	20	1		0.0%
Existing Home																
Residential (SF/COND/TH)	23	-8.0%	\$25,150,679	21.4%	\$1,093,508	31.9%	\$600,000	-20.0%	\$419	1.6%	128	44	341	15	12.6	92.9%
YTD:	301	8.3%	\$218,463,403	4.0%	\$725,792	-4.0%	\$533,300	-5.7%	\$366	-0.9%	128	704	300	159		91.0%
Single Family	23	-8.0%	\$25,150,679	21.4%	\$1,093,508	31.9%	\$600,000	-20.0%	\$419	1.6%	128	44	334	15	12.3	92.9%
YTD:	301	9.9%	\$218,463,403	5.1%	\$725,792	-4.4%	\$533,300	-6.2%	\$366	-1.6%	128	691	288	159		91.0%
Townhouse	-	0.0%	-	0.0%	-	0.0%	-	0.0%	-	0.0%	-	-	-	-	-	0.0%
YTD:	-	-100.0%	-	-100.0%	-	-100.0%	-	-100.0%	-	-100.0%	-	-	-	-	-	0.0%
Condominium	-	0.0%	-	0.0%	-	0.0%	-	0.0%	-	0.0%	-	-	7	-	84.0	0.0%
YTD:	-	0.0%	-	0.0%	-	0.0%	-	0.0%	-	0.0%	-	13	11	-		0.0%
New Construction																
Residential (SF/COND/TH)	11	175.0%	\$3,720,188	82.0%	\$338,199	-33.8%	\$304,499	-41.7%	\$208	-18.6%	22	5	35	16	3.9	95.6%
YTD:	104	82.5%	\$40,630,013	17.8%	\$390,673	-35.4%	\$324,999	-38.1%	\$227	-24.2%	47	159	42	110		94.6%
Single Family	11	175.0%	\$3,720,188	82.0%	\$338,199	-33.8%	\$304,499	-41.7%	\$208	-18.6%	22	3	31	15	3.4	95.6%
YTD:	104	82.5%	\$40,630,013	17.8%	\$390,673	-35.4%	\$324,999	-38.1%	\$227	-24.2%	47	147	34	109		94.6%
Townhouse	-	0.0%	-	0.0%	-	0.0%	-	0.0%	-	0.0%	-	-	-	-	-	0.0%
YTD:	-	0.0%	-	0.0%	-	0.0%	-	0.0%	-	0.0%	-	-	-	-	-	0.0%
Condominium	-	0.0%	-	0.0%	-	0.0%	-	0.0%	-	0.0%	-	2	4	1	-	0.0%
YTD:	-	0.0%	-	0.0%	-	0.0%	-	0.0%	-	0.0%	-	12	8	1		0.0%

* Closed Sale counts for most recent 3 months are Preliminary.

Market Analysis By County: Kimble County

Property Type	Closed Sales*	YoY%	Dollar Volume	YoY%	Average Price	YoY%	Median Price	YoY%	Price/Sqft	YoY%	DOM	New Listings	Active Listings	Pending Sales	Months Inventory	Close To OLP
All(New and Existing)																
Residential (SF/COND/TH)	1	0.0%	\$155,000	-64.0%	\$155,000	-64.0%	\$155,000	-64.0%	\$112	-58.1%	66	3	20	1	13.3	89.1%
YTD:	17	88.9%	\$5,822,000	86.9%	\$342,471	-1.1%	\$160,000	-28.3%	\$230	-21.2%	104	35	17	15		90.1%
Single Family	1	0.0%	\$155,000	-64.0%	\$155,000	-64.0%	\$155,000	-64.0%	\$112	-58.1%	66	3	20	1	13.3	89.1%
YTD:	17	88.9%	\$5,822,000	86.9%	\$342,471	-1.1%	\$160,000	-28.3%	\$230	-21.2%	104	35	17	15		90.1%
Townhouse	-	0.0%	-	0.0%	-	0.0%	-	0.0%	-	0.0%	-	-	-	-	-	0.0%
YTD:	-	0.0%	-	0.0%	-	0.0%	-	0.0%	-	0.0%	-	-	-	-	-	0.0%
Condominium	-	0.0%	-	0.0%	-	0.0%	-	0.0%	-	0.0%	-	-	-	-	-	0.0%
YTD:	-	0.0%	-	0.0%	-	0.0%	-	0.0%	-	0.0%	-	-	-	-	-	0.0%
Existing Home																
Residential (SF/COND/TH)	1	0.0%	\$155,000	-64.0%	\$155,000	-64.0%	\$155,000	-64.0%	\$112	-58.1%	66	3	19	1	14.3	89.1%
YTD:	15	87.5%	\$4,242,000	91.5%	\$282,800	2.2%	\$155,000	-29.5%	\$203	-22.3%	97	32	16	13		91.0%
Single Family	1	0.0%	\$155,000	-64.0%	\$155,000	-64.0%	\$155,000	-64.0%	\$112	-58.1%	66	3	19	1	14.3	89.1%
YTD:	15	87.5%	\$4,242,000	91.5%	\$282,800	2.2%	\$155,000	-29.5%	\$203	-22.3%	97	32	16	13		91.0%
Townhouse	-	0.0%	-	0.0%	-	0.0%	-	0.0%	-	0.0%	-	-	-	-	-	0.0%
YTD:	-	0.0%	-	0.0%	-	0.0%	-	0.0%	-	0.0%	-	-	-	-	-	0.0%
Condominium	-	0.0%	-	0.0%	-	0.0%	-	0.0%	-	0.0%	-	-	-	-	-	0.0%
YTD:	-	0.0%	-	0.0%	-	0.0%	-	0.0%	-	0.0%	-	-	-	-	-	0.0%
New Construction																
Residential (SF/COND/TH)	-	0.0%	-	0.0%	-	0.0%	-	0.0%	-	0.0%	-	-	1	-	6.0	0.0%
YTD:	2	100.0%	\$1,580,000	75.6%	\$790,000	-12.2%	\$790,000	-12.2%	\$431	-19.1%	157	3	1	2		87.0%
Single Family	-	0.0%	-	0.0%	-	0.0%	-	0.0%	-	0.0%	-	-	1	-	6.0	0.0%
YTD:	2	100.0%	\$1,580,000	75.6%	\$790,000	-12.2%	\$790,000	-12.2%	\$431	-19.1%	157	3	1	2		87.0%
Townhouse	-	0.0%	-	0.0%	-	0.0%	-	0.0%	-	0.0%	-	-	-	-	-	0.0%
YTD:	-	0.0%	-	0.0%	-	0.0%	-	0.0%	-	0.0%	-	-	-	-	-	0.0%
Condominium	-	0.0%	-	0.0%	-	0.0%	-	0.0%	-	0.0%	-	-	-	-	-	0.0%
YTD:	-	0.0%	-	0.0%	-	0.0%	-	0.0%	-	0.0%	-	-	-	-	-	0.0%

* Closed Sale counts for most recent 3 months are Preliminary.

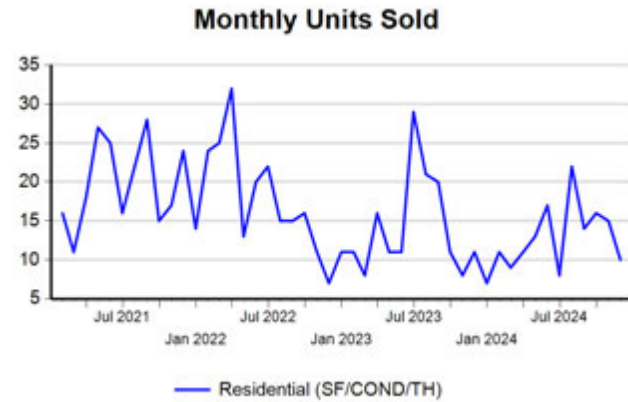
Market Analysis By County: Mason County

Property Type	Closed Sales*	YoY%	Dollar Volume	YoY%	Average Price	YoY%	Median Price	YoY%	Price/Sqft	YoY%	DOM	New Listings	Active Listings	Pending Sales	Months Inventory	Close To OLP
All(New and Existing)																
Residential (SF/COND/TH)	-	-100.0%	-	-100.0%	-	-100.0%	-	-100.0%	-	-100.0%	-	3	34	3	20.4	0.0%
YTD:	18	-40.0%	\$5,947,500	-38.5%	\$330,417	2.5%	\$275,000	0.0%	\$234	15.5%	154	55	26	11		91.1%
Single Family	-	-100.0%	-	-100.0%	-	-100.0%	-	-100.0%	-	-100.0%	-	3	34	3	20.4	0.0%
YTD:	18	-40.0%	\$5,947,500	-38.5%	\$330,417	2.5%	\$275,000	0.0%	\$234	15.5%	154	55	26	11		91.1%
Townhouse	-	0.0%	-	0.0%	-	0.0%	-	0.0%	-	0.0%	-	-	-	-	-	0.0%
YTD:	-	0.0%	-	0.0%	-	0.0%	-	0.0%	-	0.0%	-	-	-	-	-	0.0%
Condominium	-	0.0%	-	0.0%	-	0.0%	-	0.0%	-	0.0%	-	-	-	-	-	0.0%
YTD:	-	0.0%	-	0.0%	-	0.0%	-	0.0%	-	0.0%	-	-	-	-	-	0.0%
Existing Home																
Residential (SF/COND/TH)	-	-100.0%	-	-100.0%	-	-100.0%	-	-100.0%	-	-100.0%	-	2	30	3	18.9	0.0%
YTD:	17	-43.3%	\$5,584,500	-42.3%	\$328,500	1.9%	\$270,000	-1.8%	\$235	16.0%	162	50	25	10		90.6%
Single Family	-	-100.0%	-	-100.0%	-	-100.0%	-	-100.0%	-	-100.0%	-	2	30	3	18.9	0.0%
YTD:	17	-43.3%	\$5,584,500	-42.3%	\$328,500	1.9%	\$270,000	-1.8%	\$235	16.0%	162	50	25	10		90.6%
Townhouse	-	0.0%	-	0.0%	-	0.0%	-	0.0%	-	0.0%	-	-	-	-	-	0.0%
YTD:	-	0.0%	-	0.0%	-	0.0%	-	0.0%	-	0.0%	-	-	-	-	-	0.0%
Condominium	-	0.0%	-	0.0%	-	0.0%	-	0.0%	-	0.0%	-	-	-	-	-	0.0%
YTD:	-	0.0%	-	0.0%	-	0.0%	-	0.0%	-	0.0%	-	-	-	-	-	0.0%
New Construction																
Residential (SF/COND/TH)	-	0.0%	-	0.0%	-	0.0%	-	0.0%	-	0.0%	-	1	4	-	48.0	0.0%
YTD:	1	100.0%	\$363,000	100.0%	\$363,000	100.0%	\$363,000	100.0%	\$216	100.0%	8	5	2	1		99.5%
Single Family	-	0.0%	-	0.0%	-	0.0%	-	0.0%	-	0.0%	-	1	4	-	48.0	0.0%
YTD:	1	100.0%	\$363,000	100.0%	\$363,000	100.0%	\$363,000	100.0%	\$216	100.0%	8	5	2	1		99.5%
Townhouse	-	0.0%	-	0.0%	-	0.0%	-	0.0%	-	0.0%	-	-	-	-	-	0.0%
YTD:	-	0.0%	-	0.0%	-	0.0%	-	0.0%	-	0.0%	-	-	-	-	-	0.0%
Condominium	-	0.0%	-	0.0%	-	0.0%	-	0.0%	-	0.0%	-	-	-	-	-	0.0%
YTD:	-	0.0%	-	0.0%	-	0.0%	-	0.0%	-	0.0%	-	-	-	-	-	0.0%

* Closed Sale counts for most recent 3 months are Preliminary.

Trend Analysis By County: Blanco County

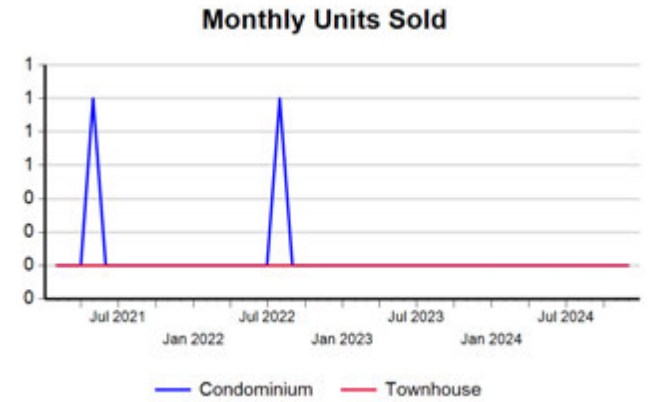
Residential, All (New and Existing)



Single Family, New vs. Existing



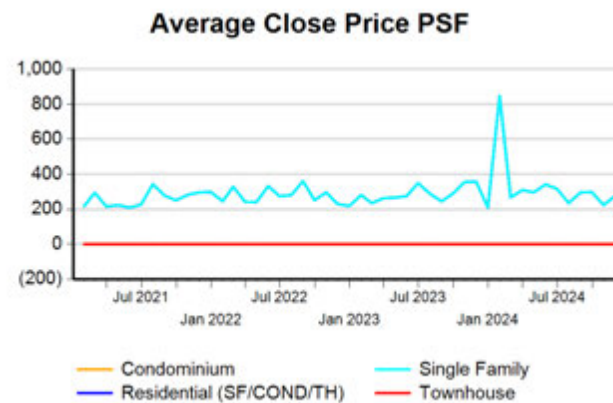
COND/TH, All (New and Existing)



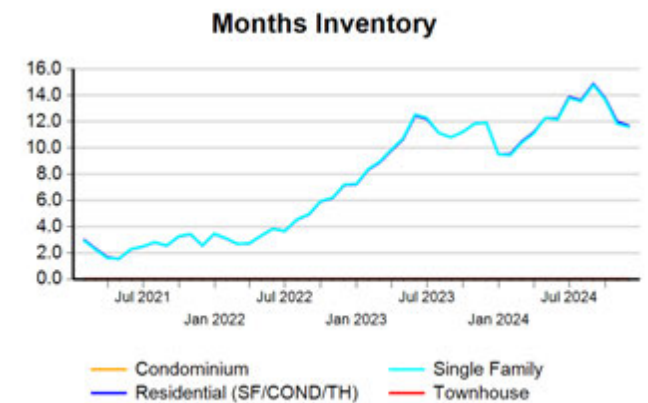
All (New and Existing) Construction



All (New and Existing) Construction



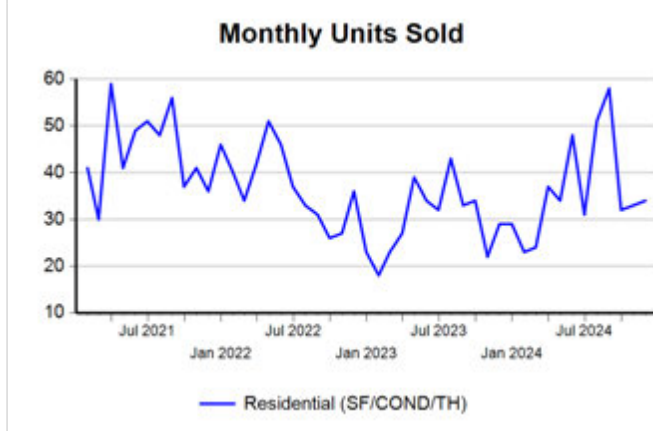
All (New and Existing) Construction



* Closed Sale counts for most recent 3 months are Preliminary.

Trend Analysis By County: Gillespie County

Residential, All (New and Existing)



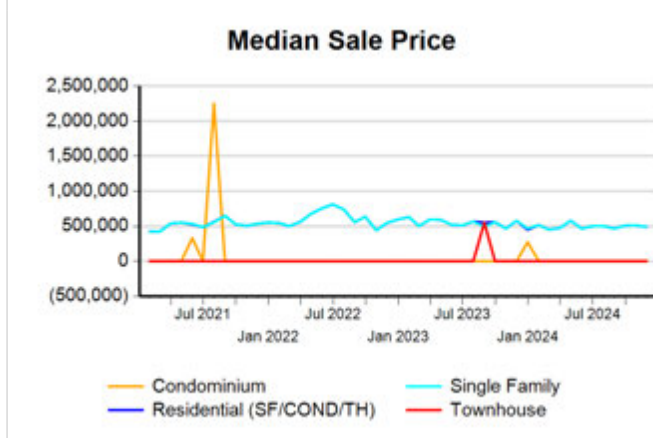
Single Family, New vs. Existing



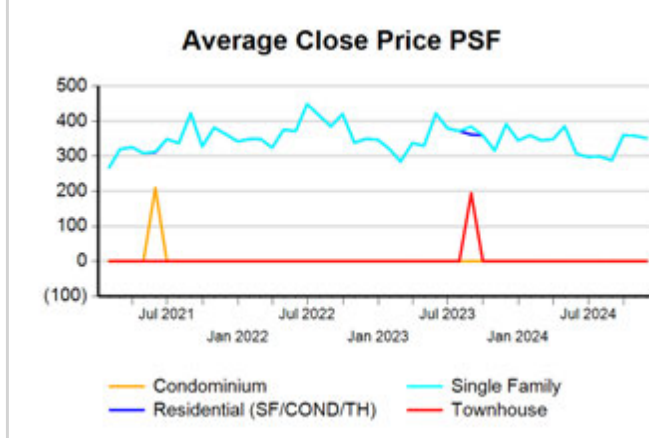
COND/TH, All (New and Existing)



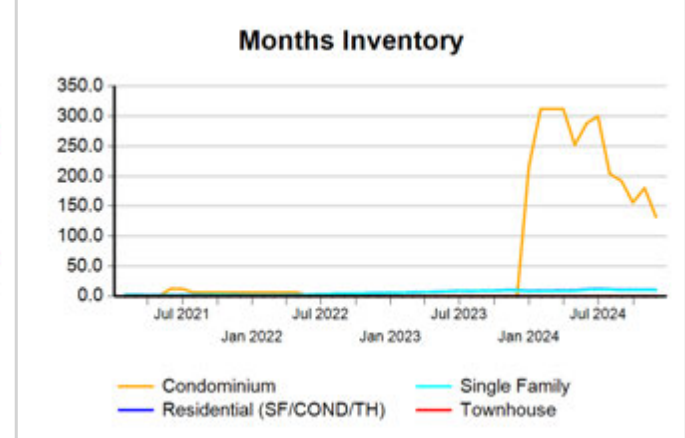
All (New and Existing) Construction



All (New and Existing) Construction



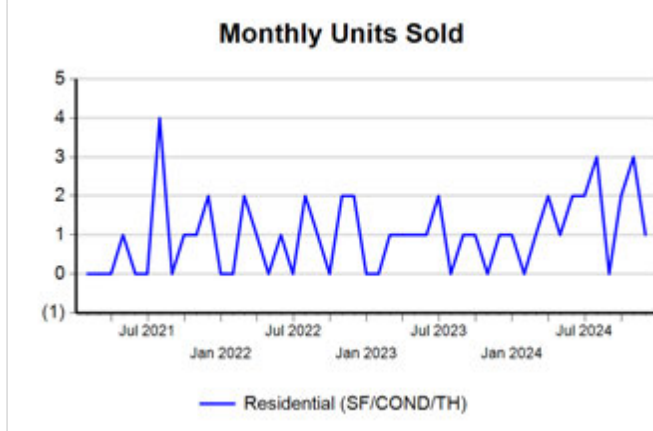
All (New and Existing) Construction



* Closed Sale counts for most recent 3 months are Preliminary.

Trend Analysis By County: Kimble County

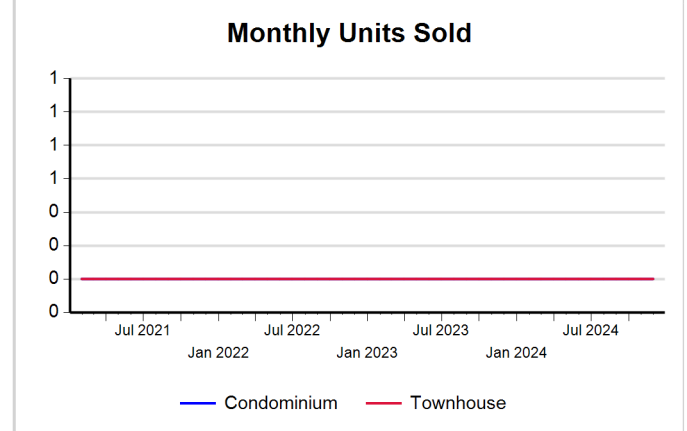
Residential, All (New and Existing)



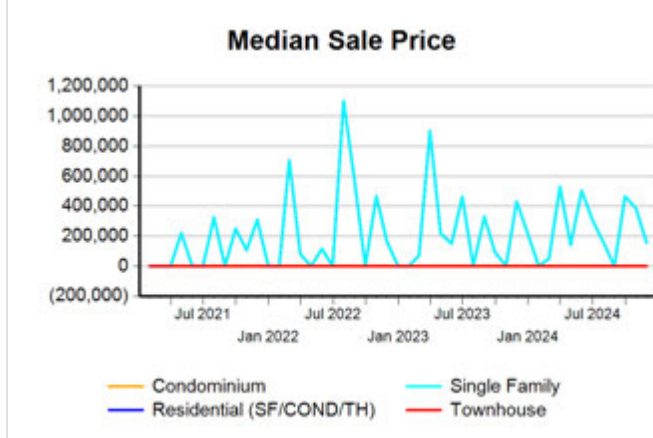
Single Family, New vs. Existing



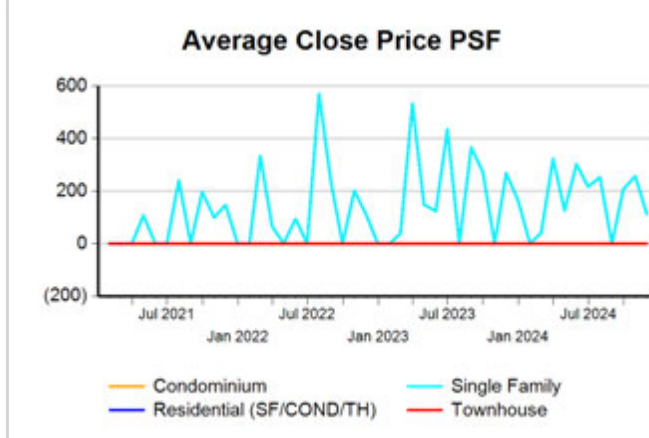
COND/TH, All (New and Existing)



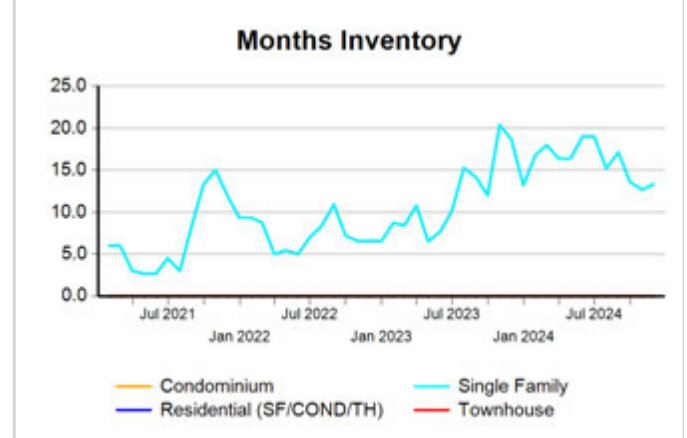
All (New and Existing) Construction



All (New and Existing) Construction



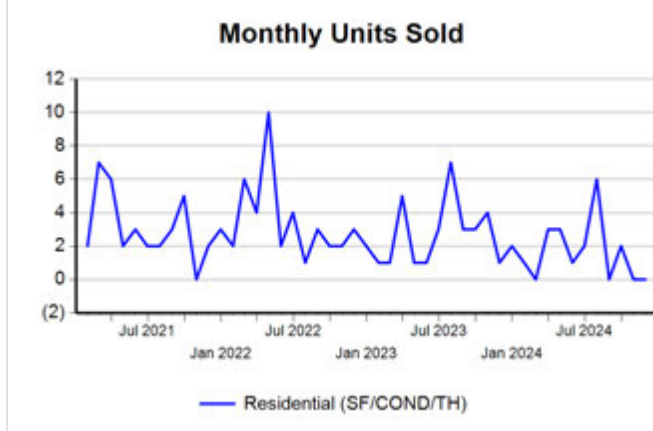
All (New and Existing) Construction



* Closed Sale counts for most recent 3 months are Preliminary.

Trend Analysis By County: Mason County

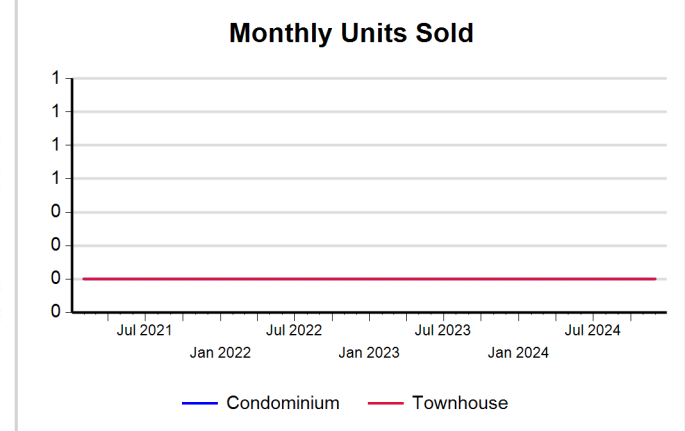
Residential, All (New and Existing)



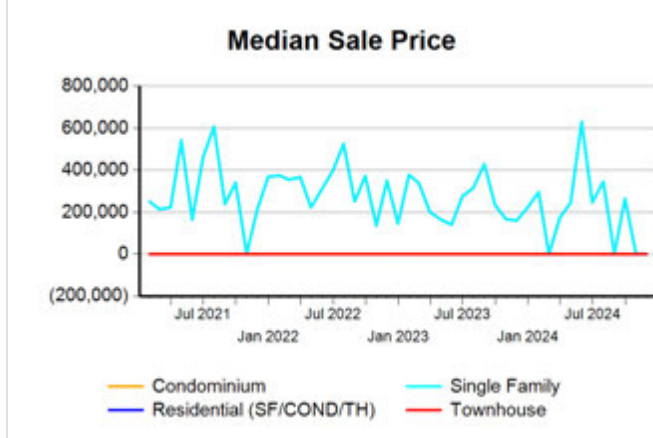
Single Family, New vs. Existing



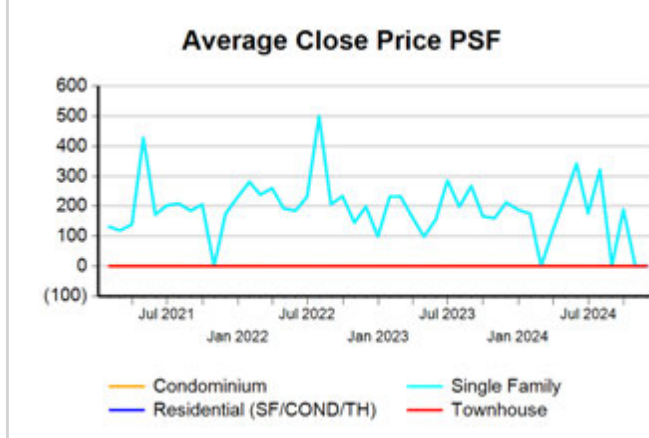
COND/TH, All (New and Existing)



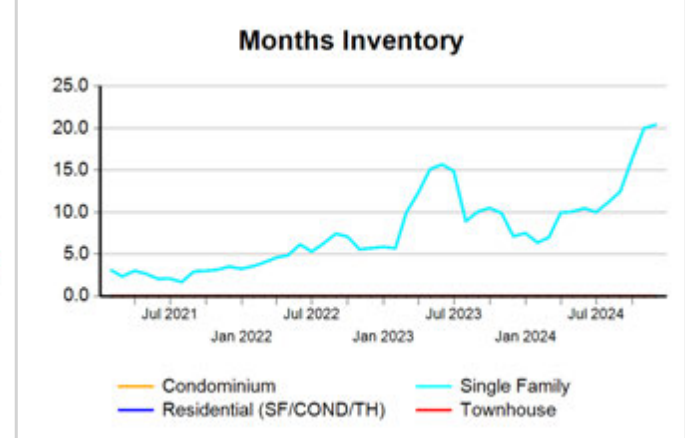
All (New and Existing) Construction



All (New and Existing) Construction



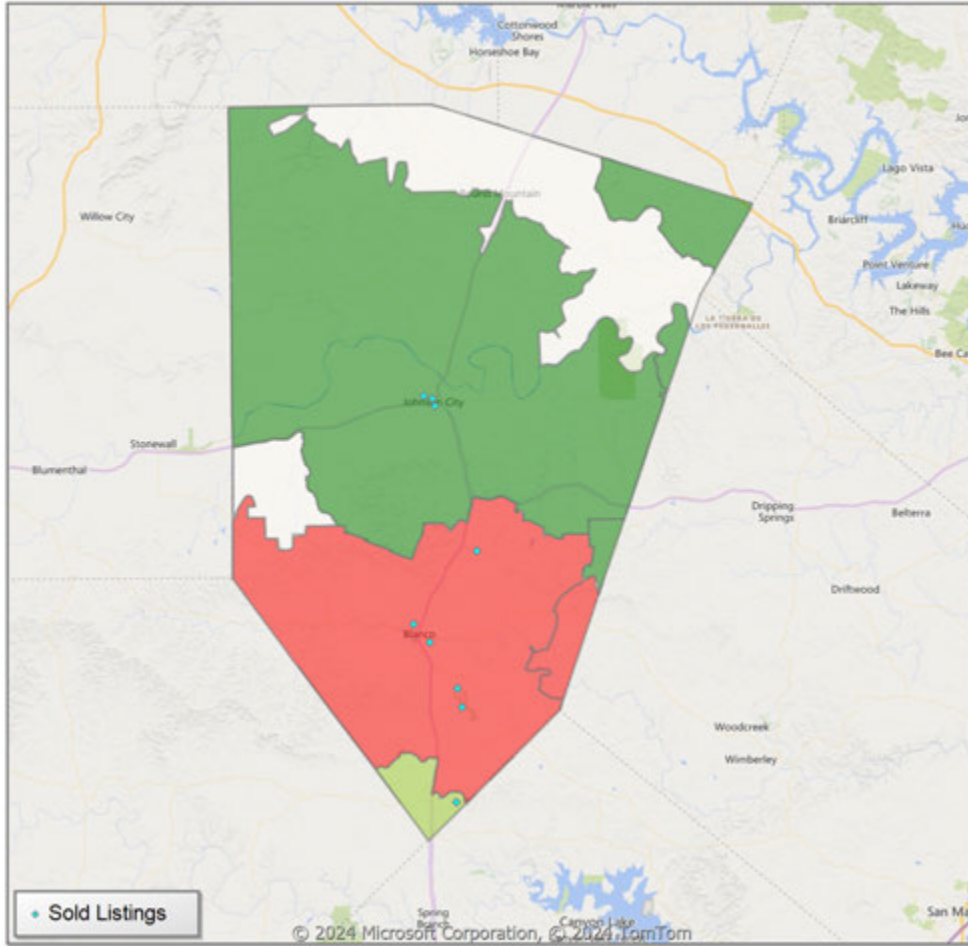
All (New and Existing) Construction



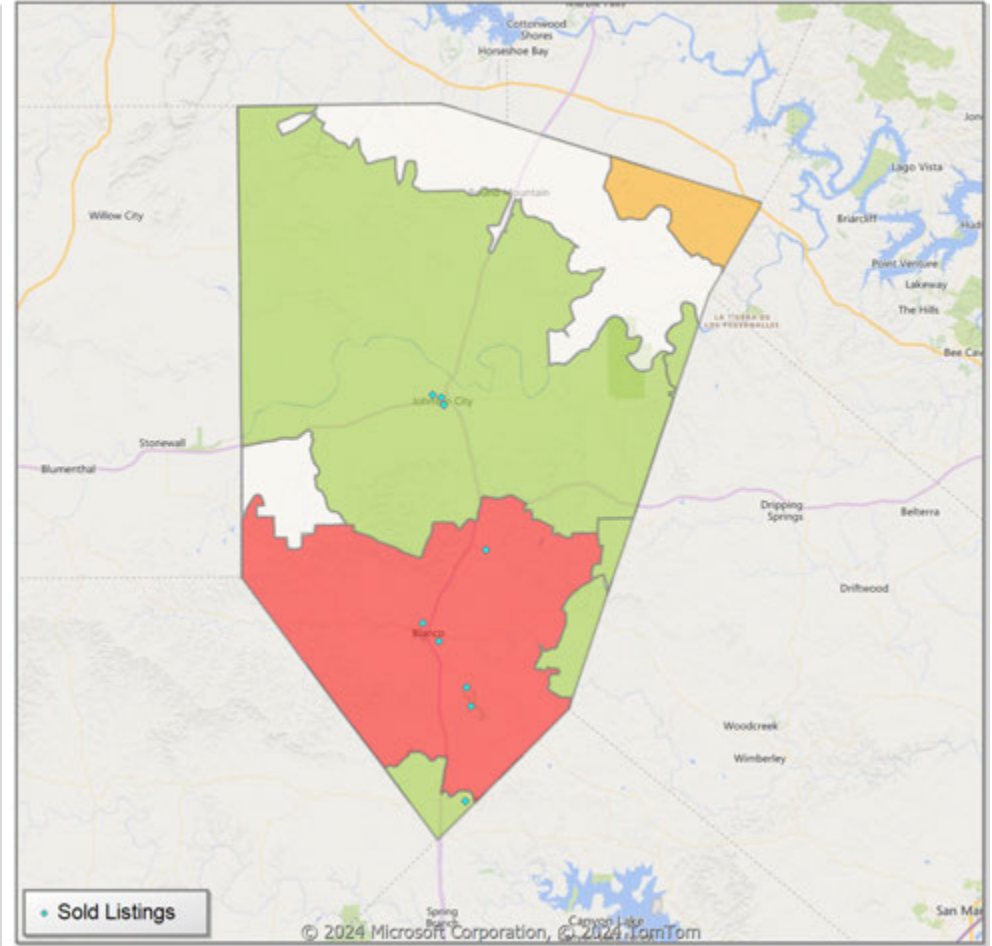
* Closed Sale counts for most recent 3 months are Preliminary.

Comparison By Zip Code* in Blanco County

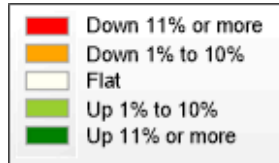
Residential Closed Sales
YoY Percentage Change**



Residential Avg Close Price Per SqFt
YoY Percentage Change**

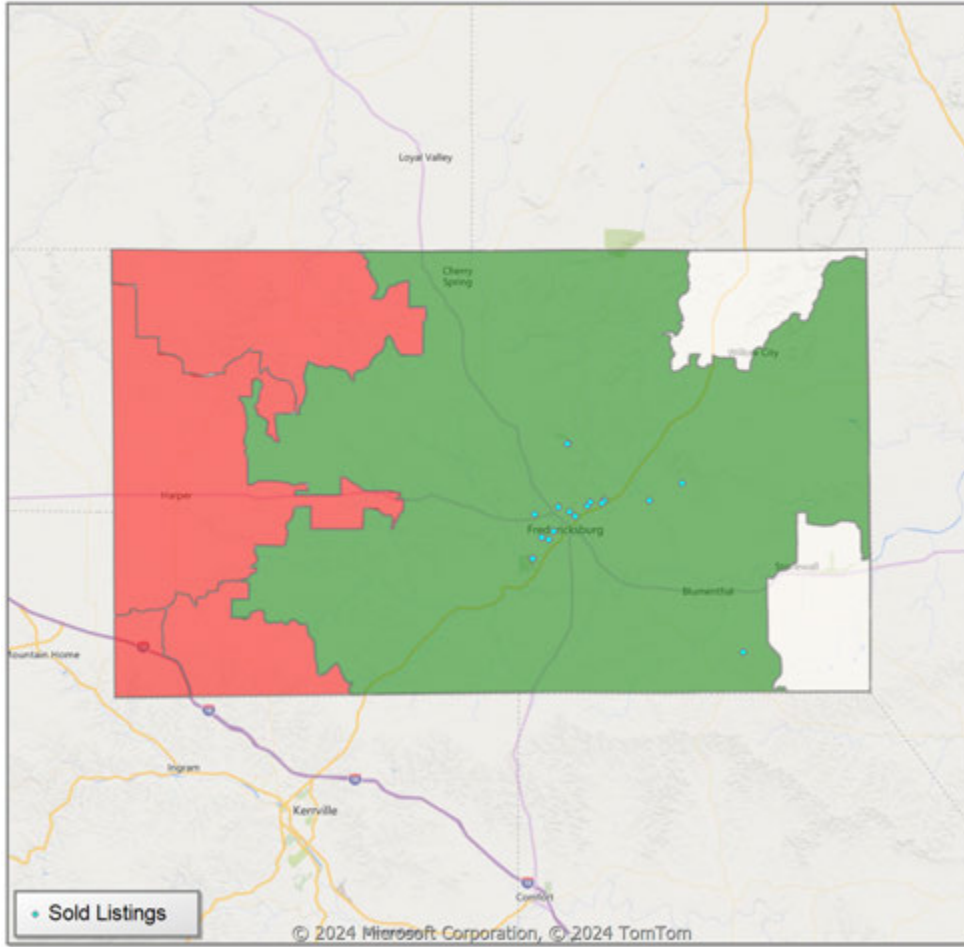


* US Census Zip Code Tabulation Area
** Residential includes Single Family, Condominium and Townhouse.

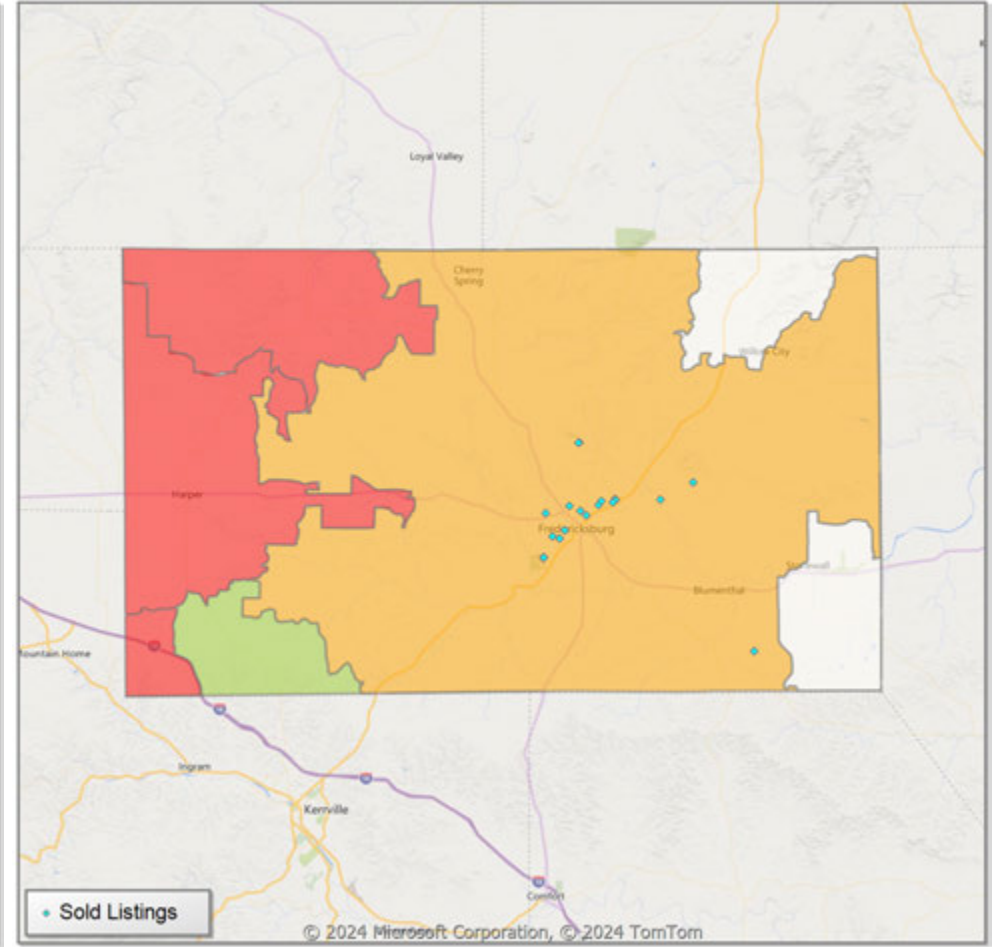


Comparison By Zip Code* in Gillespie County

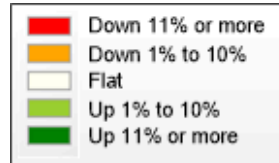
Residential Closed Sales
YoY Percentage Change**



Residential Avg Close Price Per SqFt
YoY Percentage Change**

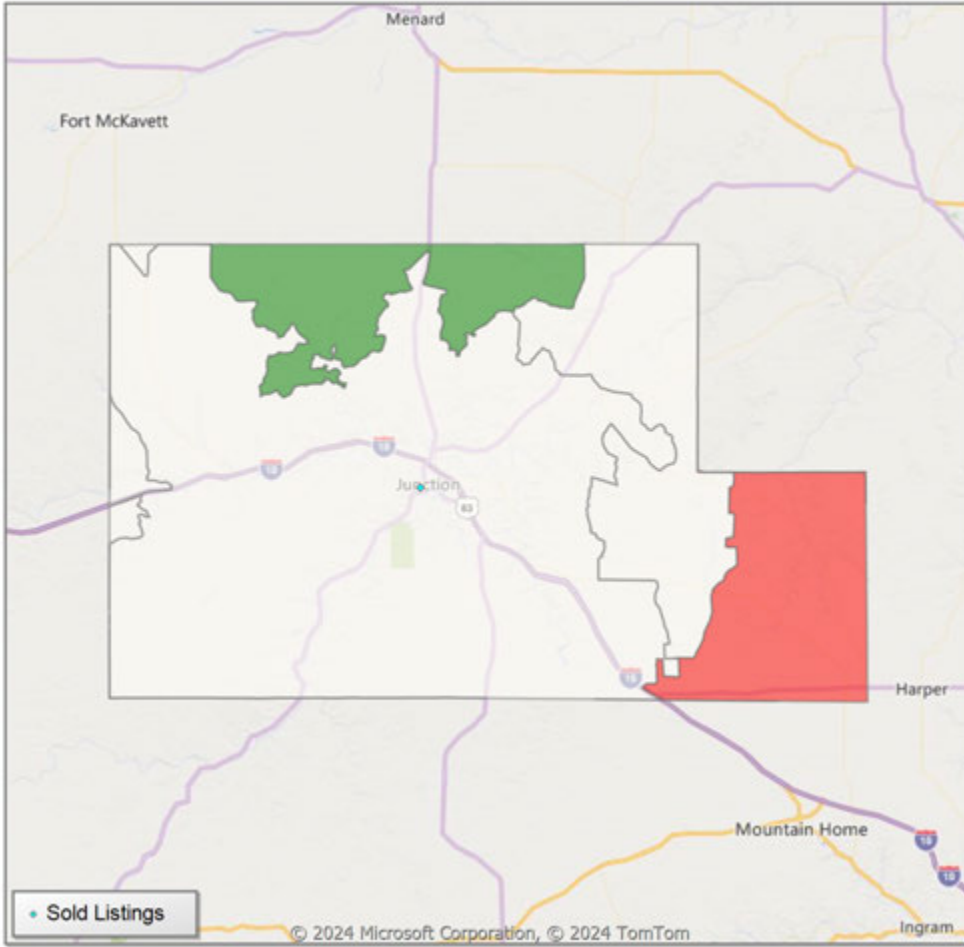


* US Census Zip Code Tabulation Area
** Residential includes Single Family, Condominium and Townhouse.

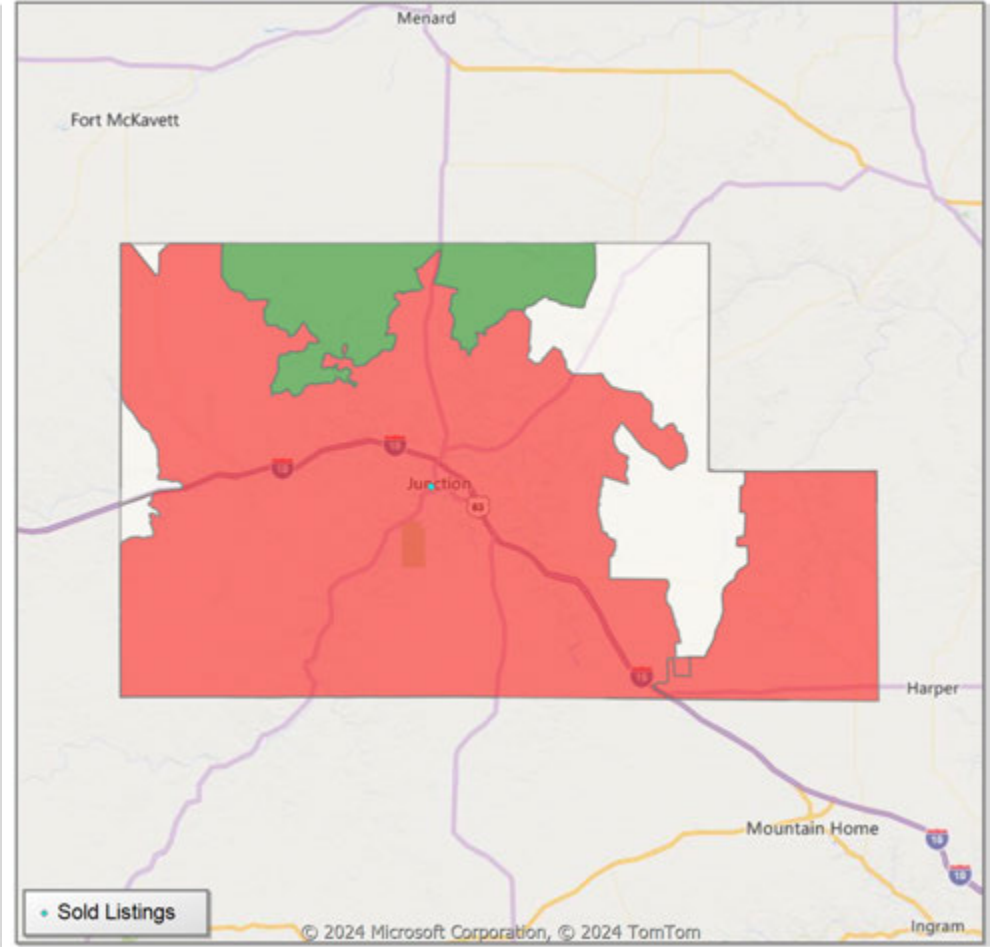


Comparison By Zip Code* in Kimble County

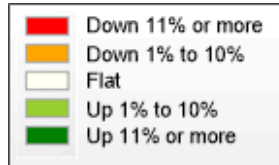
Residential Closed Sales
YoY Percentage Change**



Residential Avg Close Price Per SqFt
YoY Percentage Change**

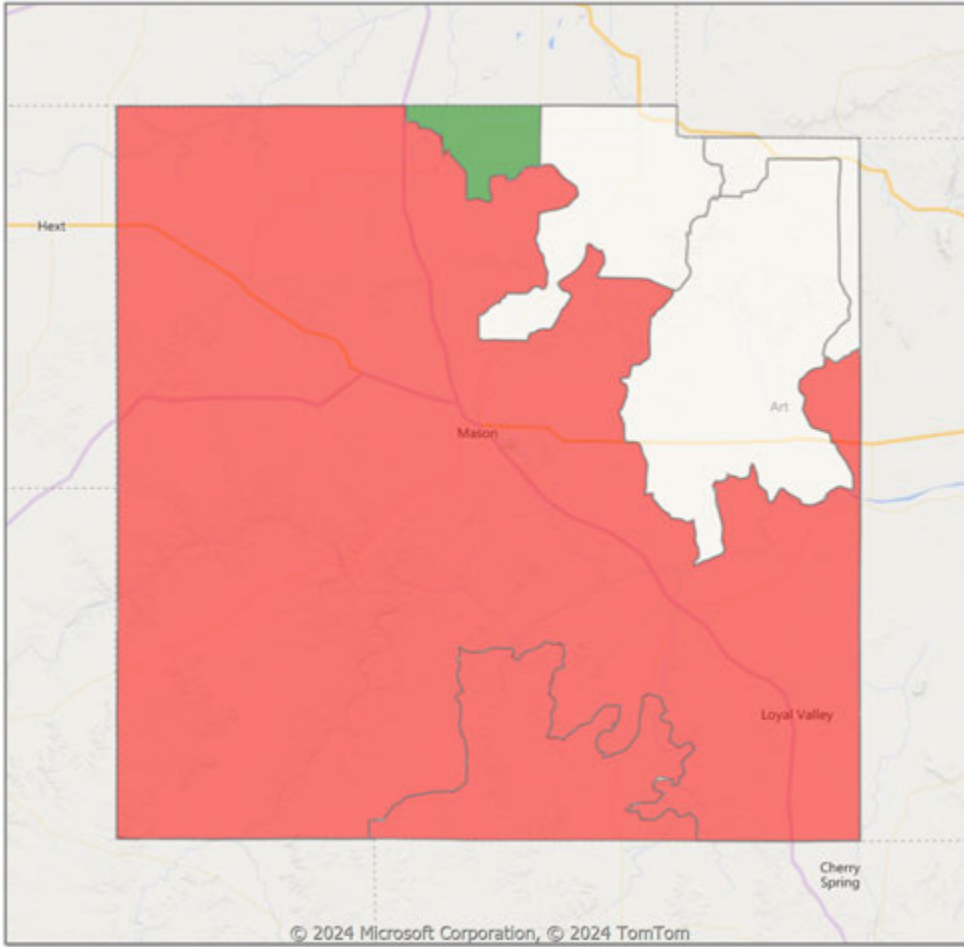


* US Census Zip Code Tabulation Area
** Residential includes Single Family, Condominium and Townhouse.

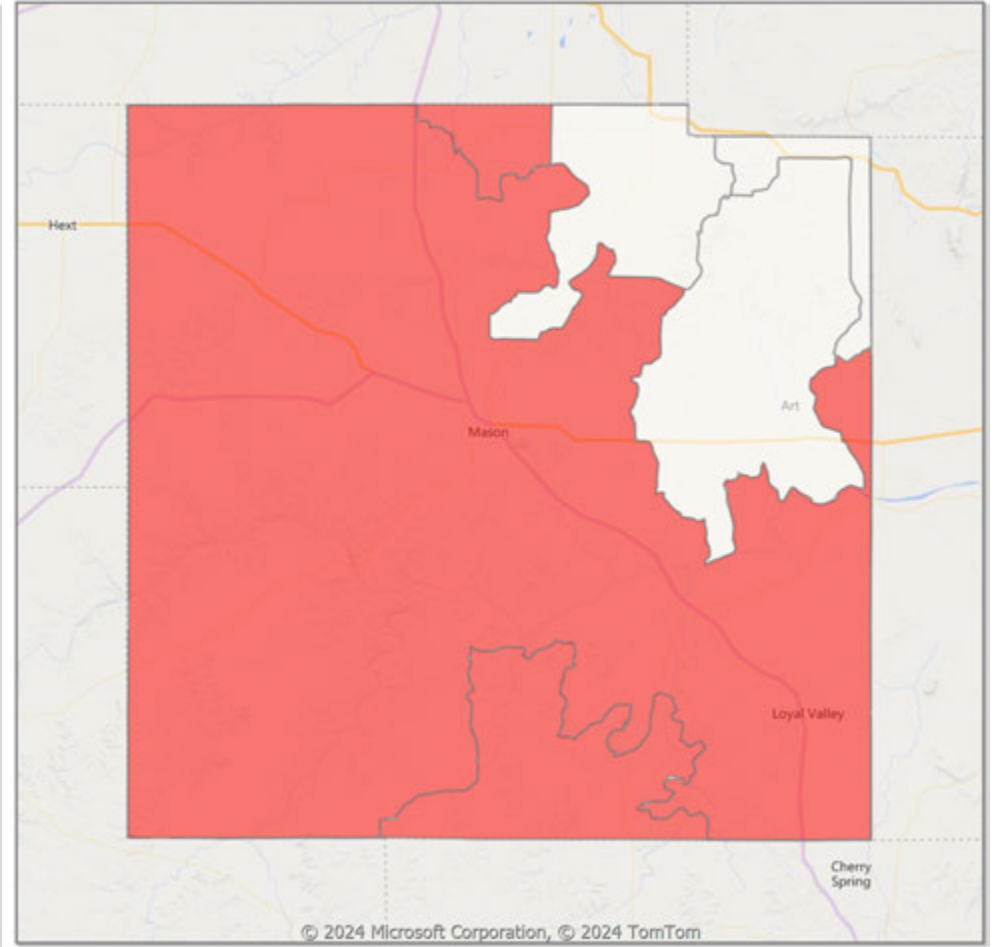


Comparison By Zip Code* in Mason County

Residential Closed Sales
YoY Percentage Change**

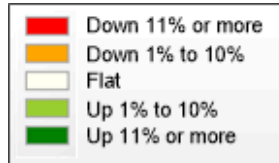


Residential Avg Close Price Per SqFt
YoY Percentage Change**



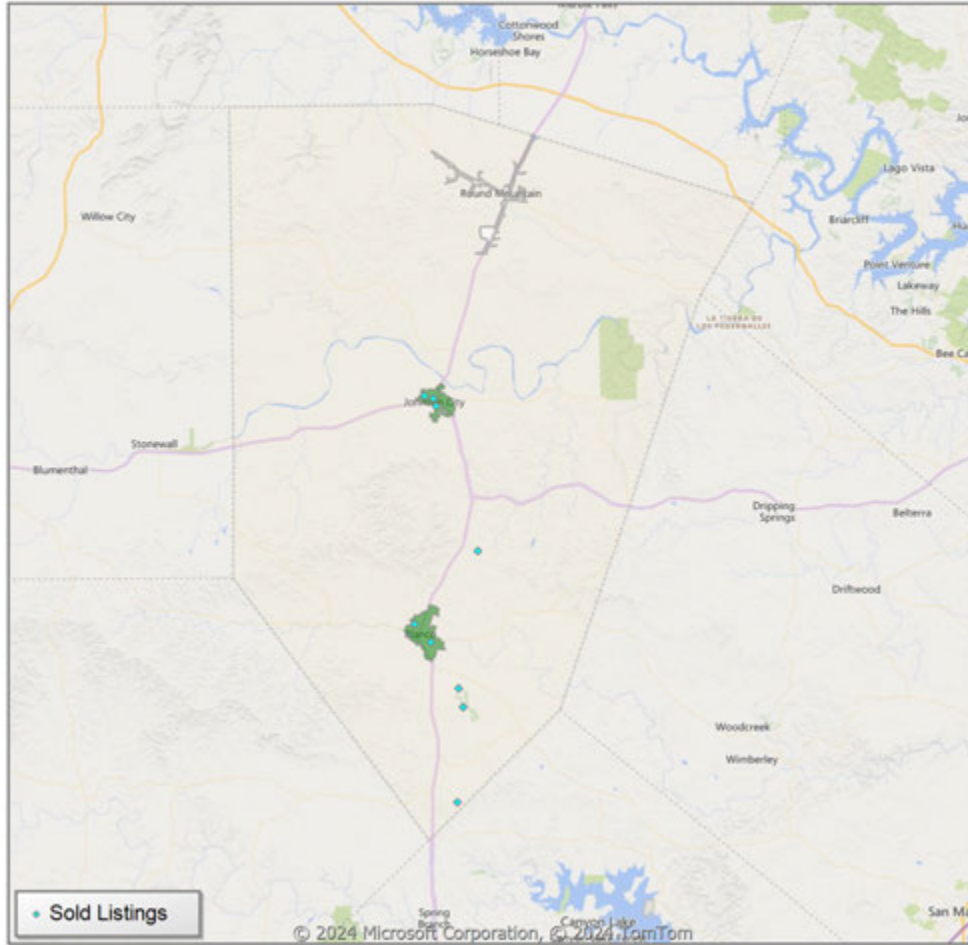
* US Census Zip Code Tabulation Area

** Residential includes Single Family, Condominium and Townhouse.

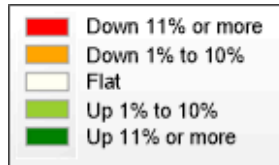
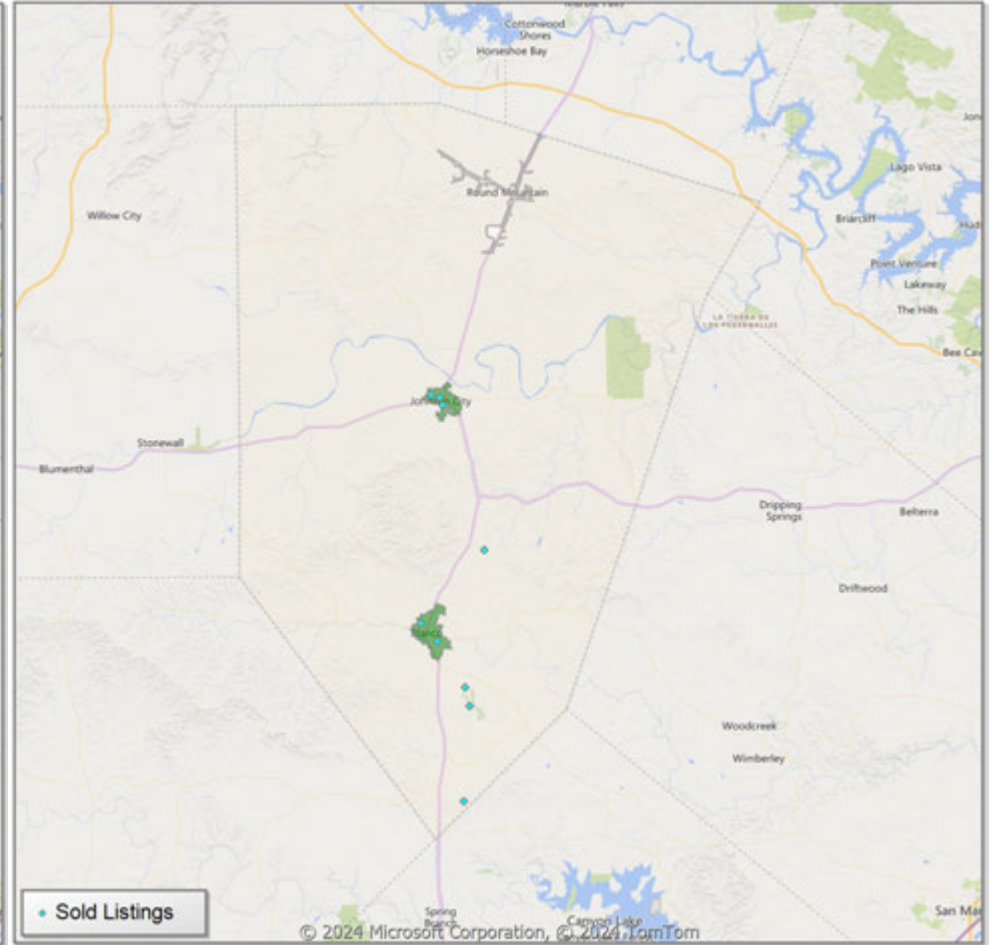


Comparison By Local Market Area* in Blanco County

Residential Closed Sales
YoY Percentage Change**



Residential Avg Close Price Per SqFt
YoY Percentage Change**

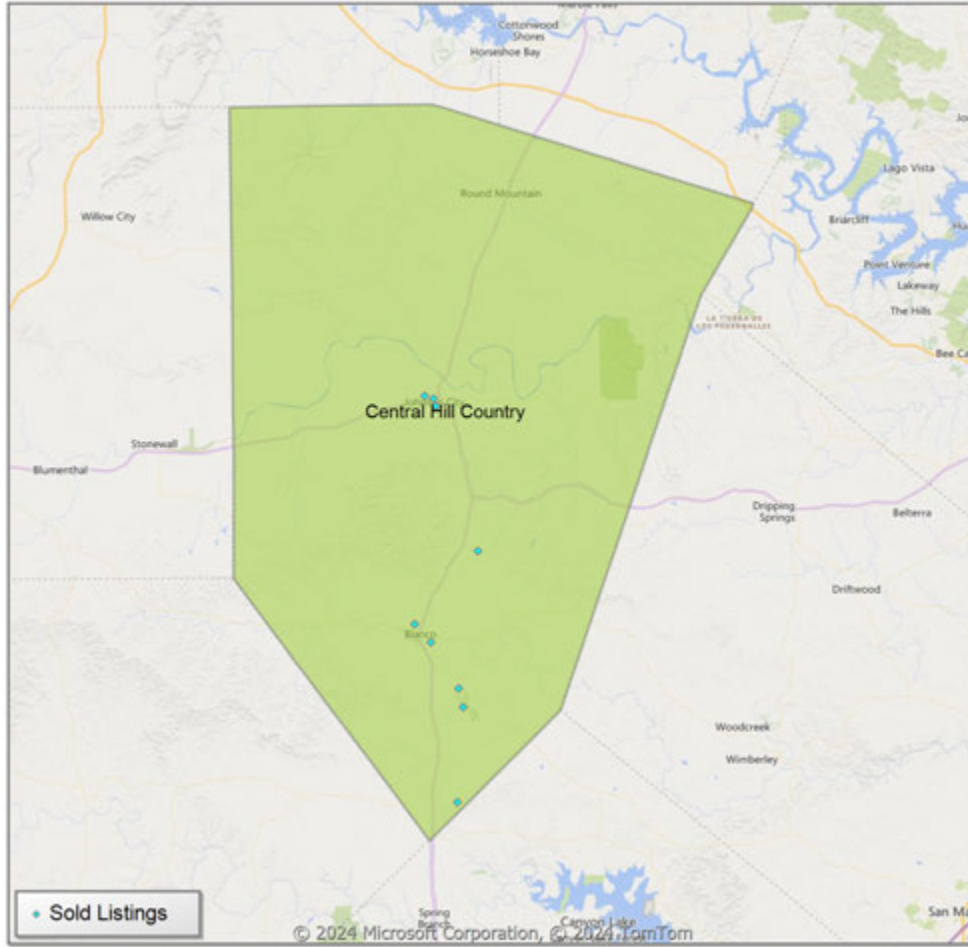


* Census Place Group

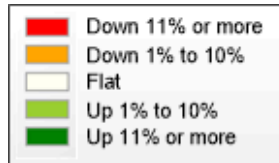
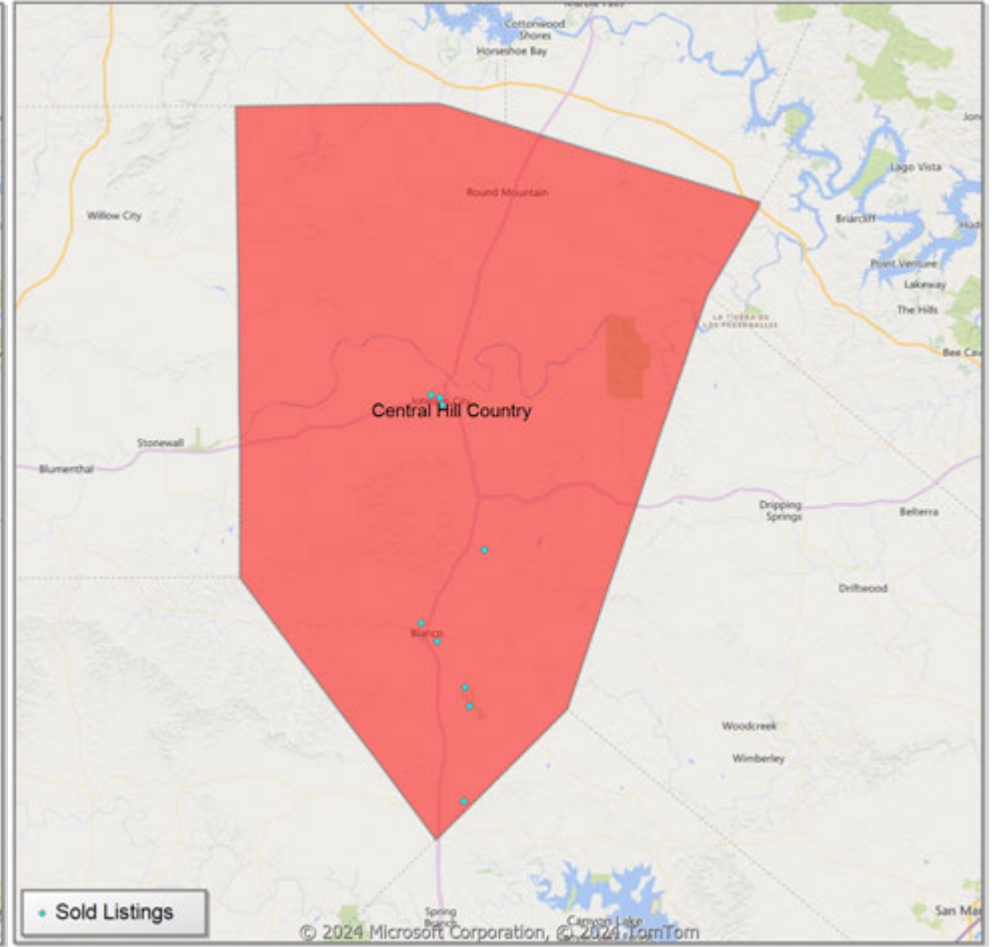
** Residential includes Single Family, Condominium and Townhouse.

Comparison By Local Market Area* in Blanco County

Residential Closed Sales
YoY Percentage Change**



Residential Avg Close Price Per SqFt
YoY Percentage Change**

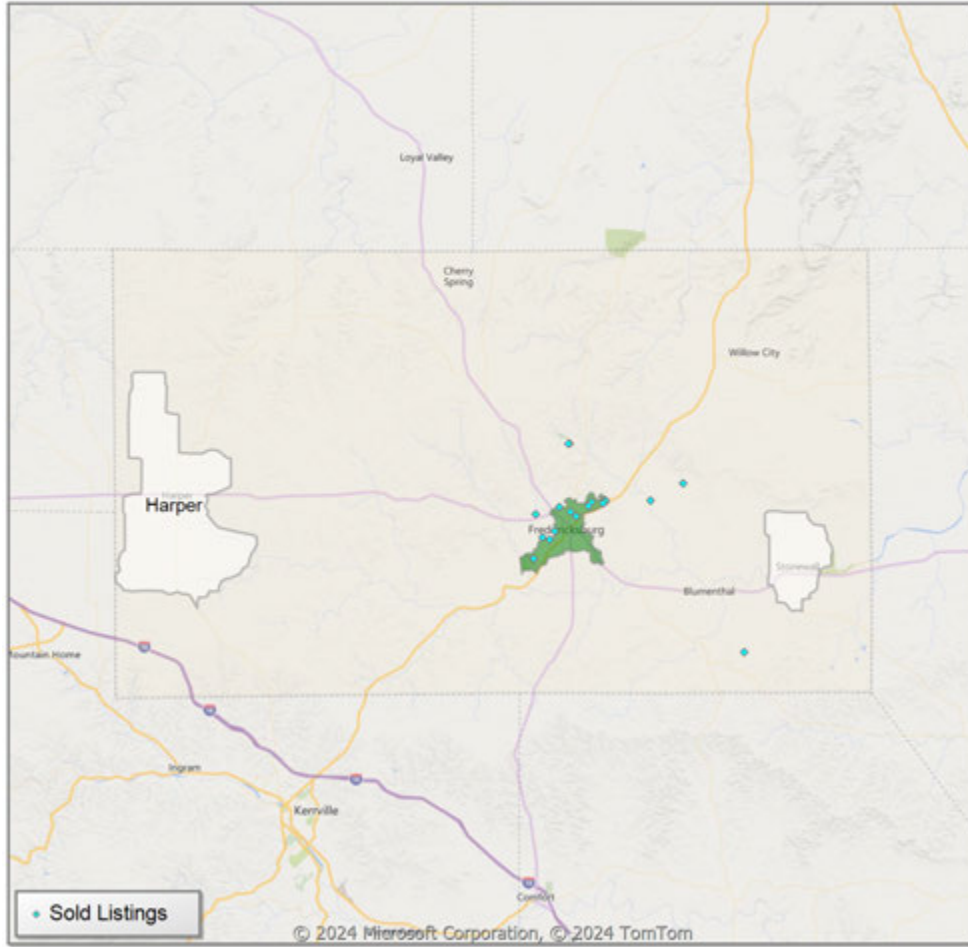


* Custom Defined Market

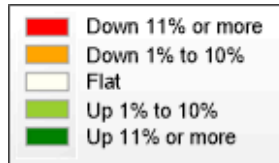
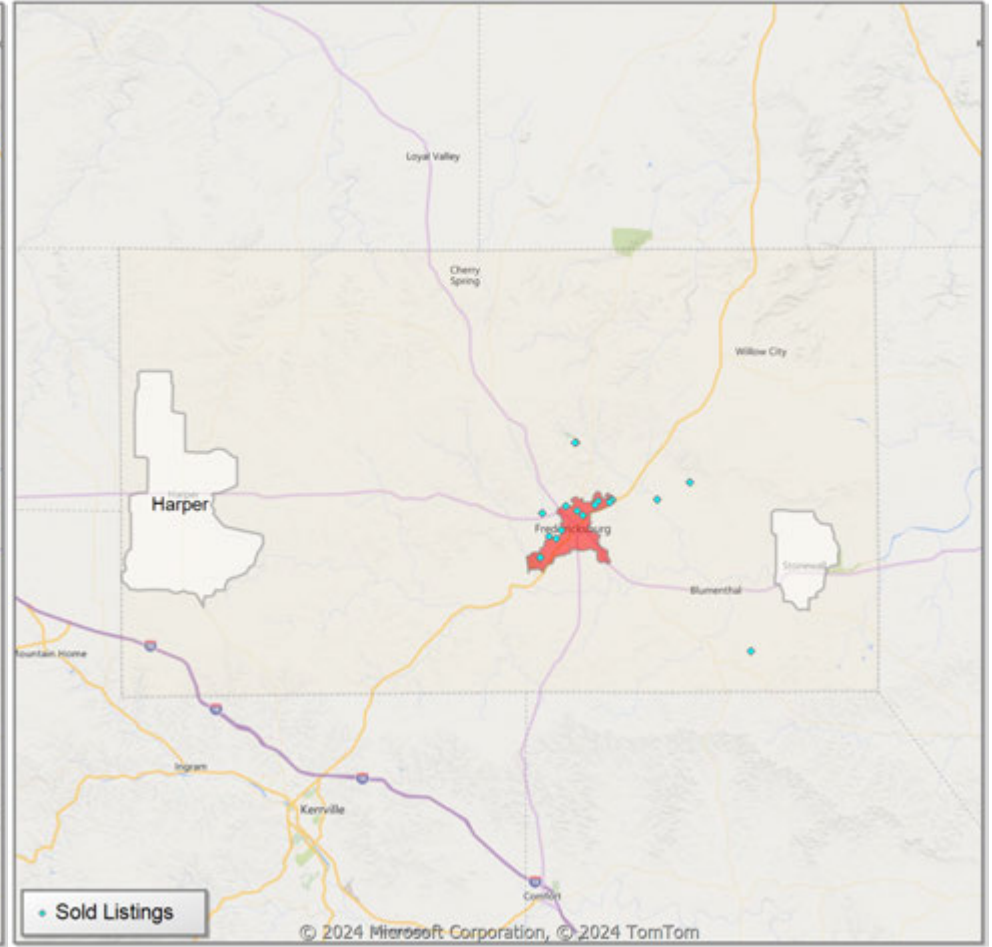
** Residential includes Single Family, Condominium and Townhouse.

Comparison By Local Market Area* in Gillespie County

Residential Closed Sales
YoY Percentage Change**



Residential Avg Close Price Per SqFt
YoY Percentage Change**

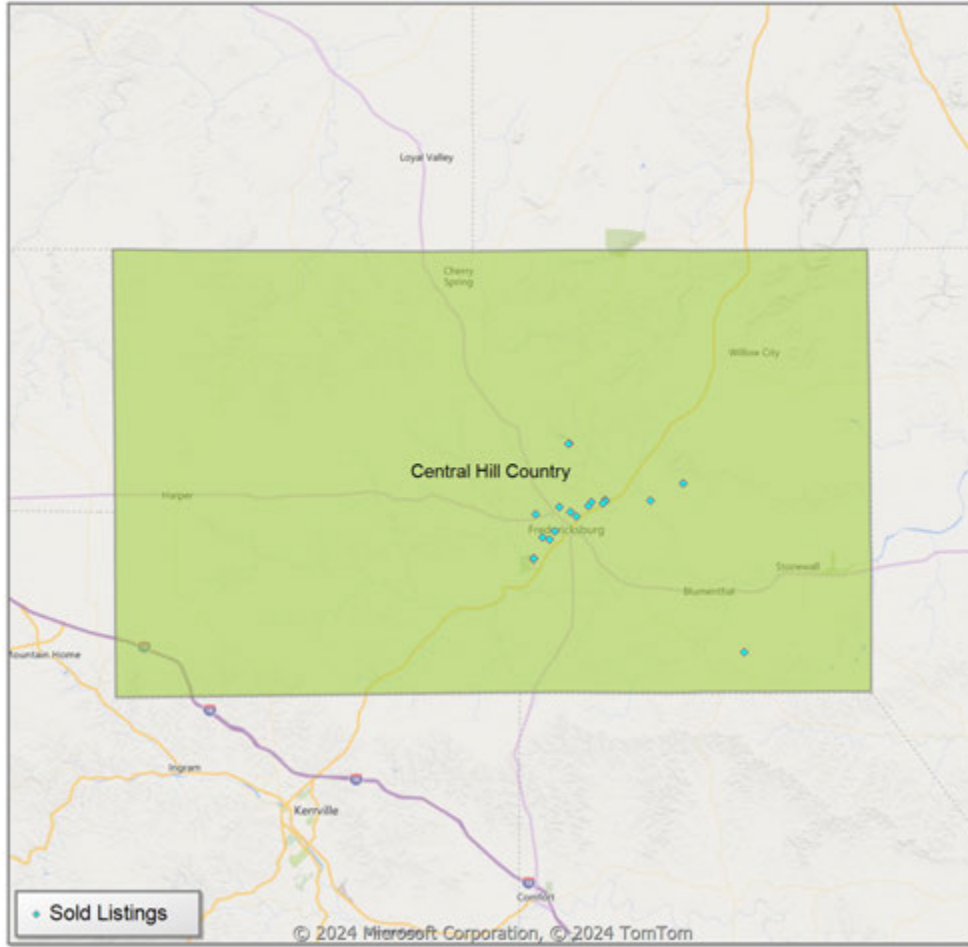


* Census Place Group

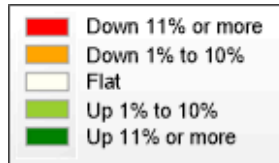
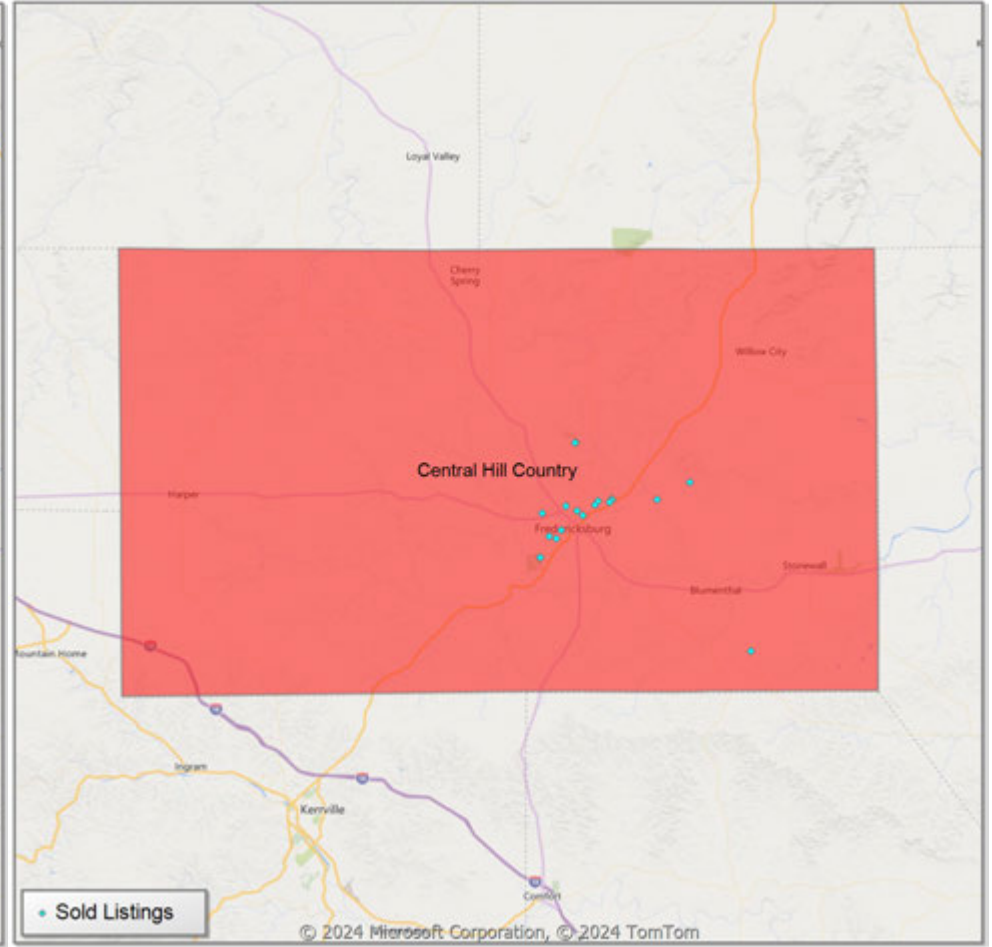
** Residential includes Single Family, Condominium and Townhouse.

Comparison By Local Market Area* in Gillespie County

Residential Closed Sales
YoY Percentage Change**



Residential Avg Close Price Per SqFt
YoY Percentage Change**

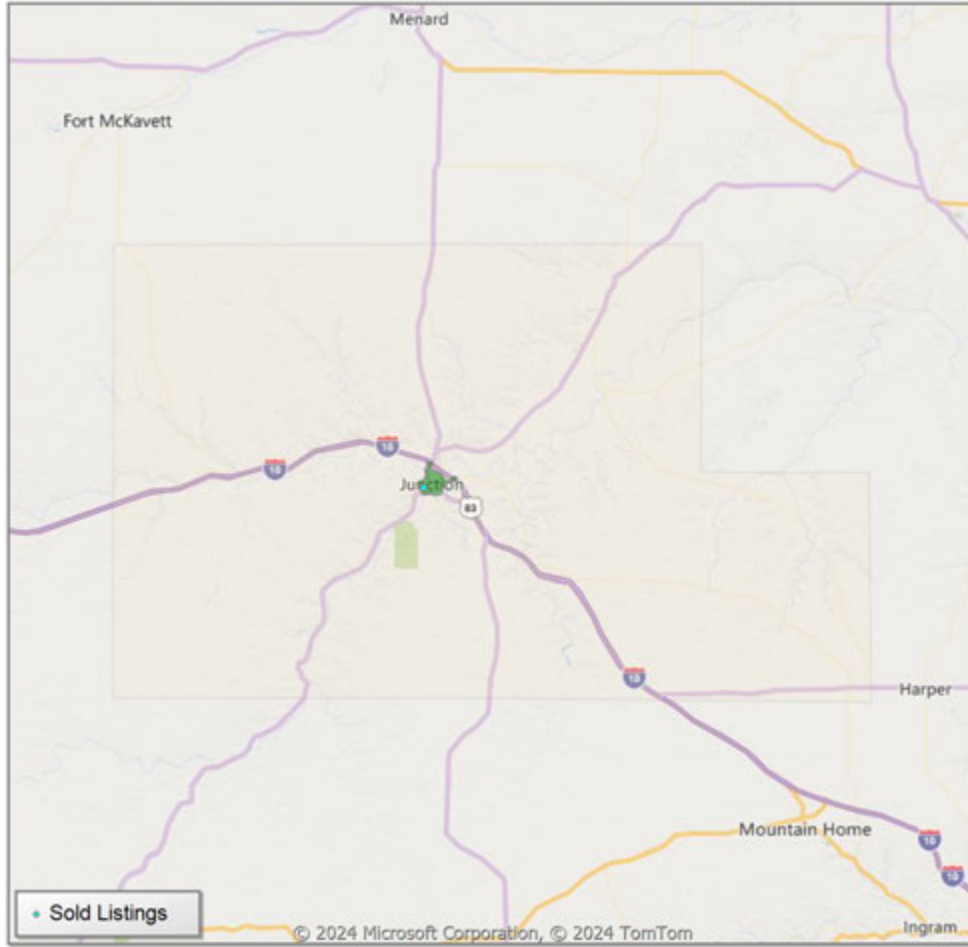


* Custom Defined Market

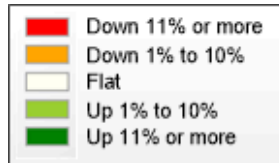
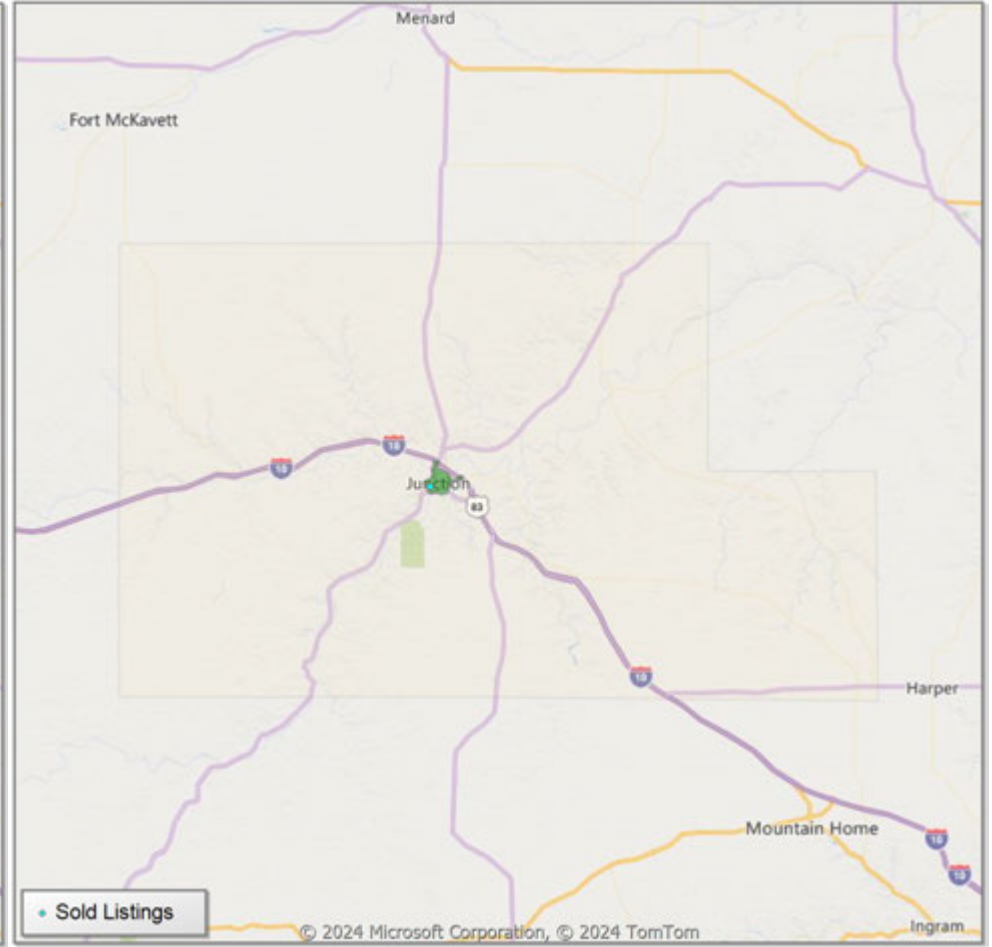
** Residential includes Single Family, Condominium and Townhouse.

Comparison By Local Market Area* in Kimble County

Residential Closed Sales
YoY Percentage Change**



Residential Avg Close Price Per SqFt
YoY Percentage Change**



* Census Place Group

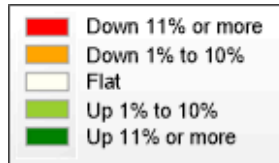
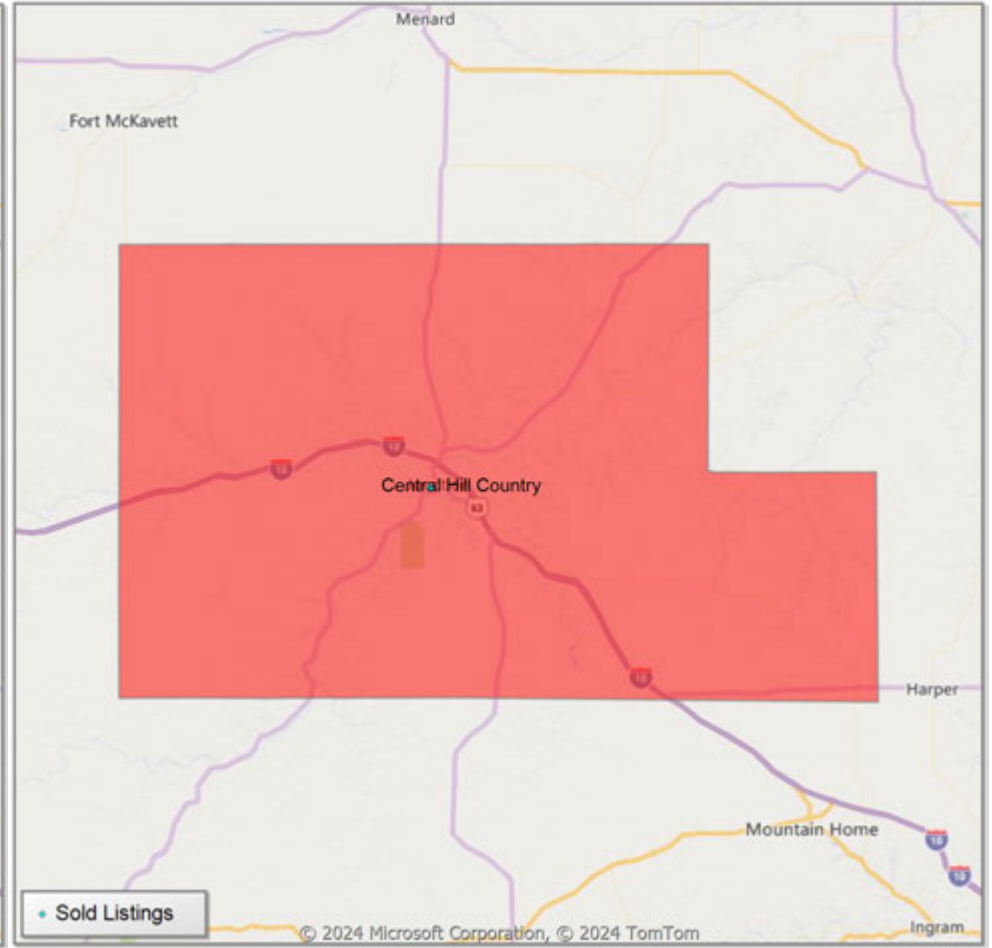
** Residential includes Single Family, Condominium and Townhouse.

Comparison By Local Market Area* in Kimble County

Residential Closed Sales
YoY Percentage Change**



Residential Avg Close Price Per SqFt
YoY Percentage Change**

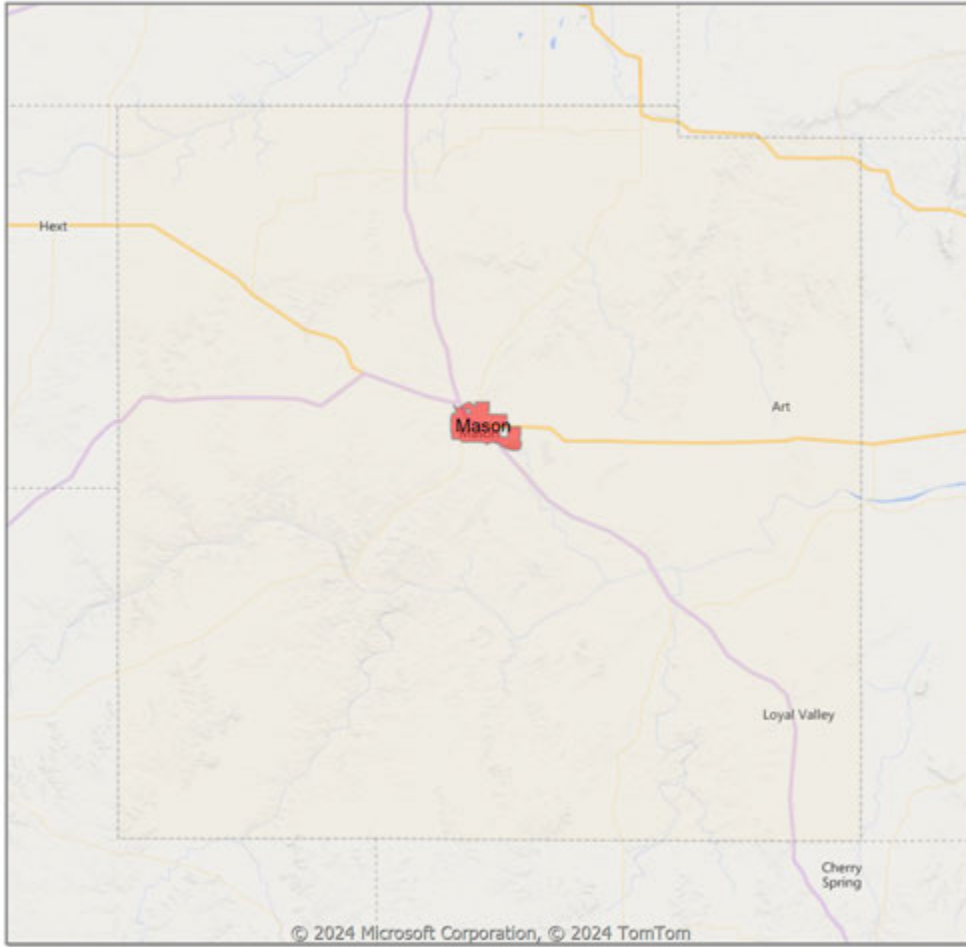


* Custom Defined Market

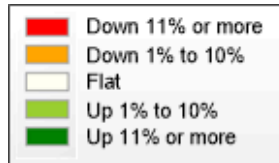
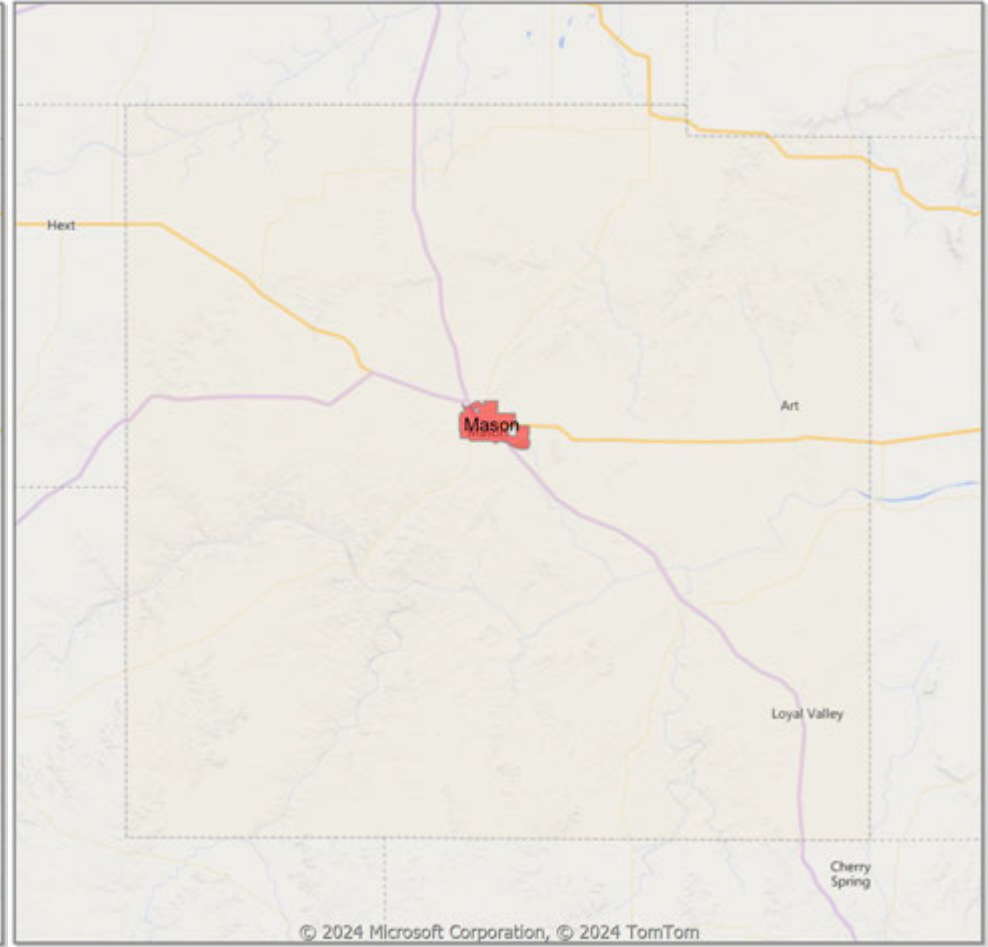
** Residential includes Single Family, Condominium and Townhouse.

Comparison By Local Market Area* in Mason County

Residential Closed Sales
YoY Percentage Change**



Residential Avg Close Price Per SqFt
YoY Percentage Change**



* Census Place Group

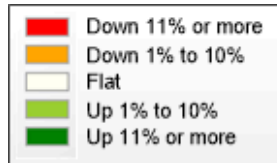
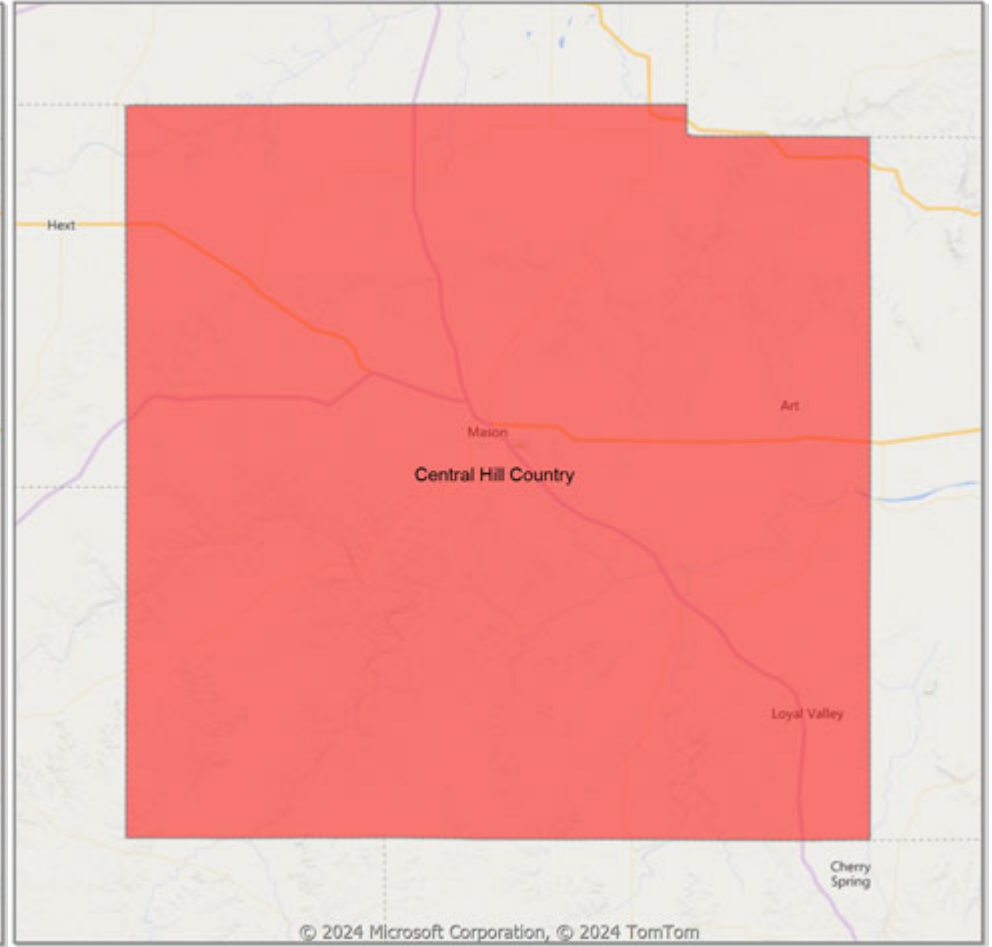
** Residential includes Single Family, Condominium and Townhouse.

Comparison By Local Market Area* in Mason County

Residential Closed Sales
YoY Percentage Change**



Residential Avg Close Price Per SqFt
YoY Percentage Change**



* Custom Defined Market

** Residential includes Single Family, Condominium and Townhouse.

Market Analysis By Local Market Area*: Blanco

Property Type	Closed Sales**	YoY%	Dollar Volume	YoY%	Average Price	YoY%	Median Price	YoY%	Price/Sqft	YoY%	DOM	New Listings	Active Listings	Pending Sales	Months Inventory	Close To OLP
All(New and Existing)																
Residential (SF/COND/TH)	2	100.0%	\$740,000	111.4%	\$370,000	5.7%	\$370,000	5.7%	\$218	22.8%	169	3	15	2	10.0	94.5%
YTD:	15	-11.8%	\$4,994,700	-22.0%	\$332,980	-11.6%	\$359,000	-6.3%	\$226	-2.3%	106	35	17	15		91.3%
Single Family	2	100.0%	\$740,000	111.4%	\$370,000	5.7%	\$370,000	5.7%	\$218	22.8%	169	3	15	2	10.0	94.5%
YTD:	15	-11.8%	\$4,994,700	-22.0%	\$332,980	-11.6%	\$359,000	-6.3%	\$226	-2.3%	106	34	17	15		91.3%
Townhouse	-	0.0%	-	0.0%	-	0.0%	-	0.0%	-	0.0%	-	-	-	-	-	0.0%
YTD:	-	0.0%	-	0.0%	-	0.0%	-	0.0%	-	0.0%	-	-	-	-	-	0.0%
Condominium	-	0.0%	-	0.0%	-	0.0%	-	0.0%	-	0.0%	-	-	-	-	-	0.0%
YTD:	-	0.0%	-	0.0%	-	0.0%	-	0.0%	-	0.0%	-	1	1	-	-	0.0%
Existing Home																
Residential (SF/COND/TH)	2	100.0%	\$740,000	111.4%	\$370,000	5.7%	\$370,000	5.7%	\$218	22.8%	169	2	14	2	10.5	94.5%
YTD:	13	-13.3%	\$4,285,700	-24.2%	\$329,669	-12.6%	\$360,000	-7.5%	\$224	-0.8%	107	29	15	13		91.2%
Single Family	2	100.0%	\$740,000	111.4%	\$370,000	5.7%	\$370,000	5.7%	\$218	22.8%	169	2	14	2	10.5	94.5%
YTD:	13	-13.3%	\$4,285,700	-24.2%	\$329,669	-12.6%	\$360,000	-7.5%	\$224	-0.8%	107	28	15	13		91.2%
Townhouse	-	0.0%	-	0.0%	-	0.0%	-	0.0%	-	0.0%	-	-	-	-	-	0.0%
YTD:	-	0.0%	-	0.0%	-	0.0%	-	0.0%	-	0.0%	-	-	-	-	-	0.0%
Condominium	-	0.0%	-	0.0%	-	0.0%	-	0.0%	-	0.0%	-	-	-	-	-	0.0%
YTD:	-	0.0%	-	0.0%	-	0.0%	-	0.0%	-	0.0%	-	1	1	-	-	0.0%
New Construction																
Residential (SF/COND/TH)	-	0.0%	-	0.0%	-	0.0%	-	0.0%	-	0.0%	-	1	1	-	6.0	0.0%
YTD:	2	0.0%	\$709,000	-5.5%	\$354,500	-5.5%	\$354,500	-5.5%	\$235	-12.2%	101	6	2	2		91.8%
Single Family	-	0.0%	-	0.0%	-	0.0%	-	0.0%	-	0.0%	-	1	1	-	6.0	0.0%
YTD:	2	0.0%	\$709,000	-5.5%	\$354,500	-5.5%	\$354,500	-5.5%	\$235	-12.2%	101	6	2	2		91.8%
Townhouse	-	0.0%	-	0.0%	-	0.0%	-	0.0%	-	0.0%	-	-	-	-	-	0.0%
YTD:	-	0.0%	-	0.0%	-	0.0%	-	0.0%	-	0.0%	-	-	-	-	-	0.0%
Condominium	-	0.0%	-	0.0%	-	0.0%	-	0.0%	-	0.0%	-	-	-	-	-	0.0%
YTD:	-	0.0%	-	0.0%	-	0.0%	-	0.0%	-	0.0%	-	-	-	-	-	0.0%

* Local Market Area Code: 91; Type: Census Place Group
 ** Closed Sale counts for most recent 3 months are Preliminary.

Market Analysis By Local Market Area*: Central Hill Country

Property Type	Closed Sales**	YoY%	Dollar Volume	YoY%	Average Price	YoY%	Median Price	YoY%	Price/Sqft	YoY%	DOM	New Listings	Active Listings	Pending Sales	Months Inventory	Close To OLP
All(New and Existing)																
Residential (SF/COND/TH)	45	7.1%	\$34,063,191	14.1%	\$756,960	6.5%	\$449,005	-23.3%	\$328	-12.5%	111	78	578	42	11.1	94.1%
YTD:	588	10.7%	\$354,120,525	0.9%	\$602,246	-8.9%	\$474,595	-5.7%	\$322	-2.1%	108	1,283	545	438		92.3%
Single Family	45	7.1%	\$34,063,191	14.1%	\$756,960	6.5%	\$449,005	-23.3%	\$328	-12.5%	111	76	566	41	10.8	94.1%
YTD:	588	11.6%	\$354,120,525	1.5%	\$602,246	-9.0%	\$474,595	-5.3%	\$322	-2.4%	108	1,255	524	437		92.3%
Townhouse	-	0.0%	-	0.0%	-	0.0%	-	0.0%	-	0.0%	-	-	-	-	-	0.0%
YTD:	-	-100.0%	-	-100.0%	-	-100.0%	-	-100.0%	-	-100.0%	-	-	-	-	-	0.0%
Condominium	-	0.0%	-	0.0%	-	0.0%	-	0.0%	-	0.0%	-	2	12	1	144.0	0.0%
YTD:	-	0.0%	-	0.0%	-	0.0%	-	0.0%	-	0.0%	-	28	21	1		0.0%
Existing Home																
Residential (SF/COND/TH)	32	-5.9%	\$29,576,235	15.6%	\$924,257	22.8%	\$565,000	-11.4%	\$376	-6.7%	120	63	503	25	12.7	93.5%
YTD:	440	5.8%	\$291,913,934	4.6%	\$663,441	-1.2%	\$509,950	-1.0%	\$352	3.5%	120	1,026	448	287		91.3%
Single Family	32	-5.9%	\$29,576,235	15.6%	\$924,257	22.8%	\$565,000	-11.4%	\$376	-6.7%	120	63	495	25	12.6	93.5%
YTD:	440	6.8%	\$291,913,934	5.4%	\$663,441	-1.3%	\$509,950	1.0%	\$352	3.1%	120	1,010	435	287		91.3%
Townhouse	-	0.0%	-	0.0%	-	0.0%	-	0.0%	-	0.0%	-	-	-	-	-	0.0%
YTD:	-	-100.0%	-	-100.0%	-	-100.0%	-	-100.0%	-	-100.0%	-	-	-	-	-	0.0%
Condominium	-	0.0%	-	0.0%	-	0.0%	-	0.0%	-	0.0%	-	-	8	-	96.0	0.0%
YTD:	-	0.0%	-	0.0%	-	0.0%	-	0.0%	-	0.0%	-	16	12	-		0.0%
New Construction																
Residential (SF/COND/TH)	13	62.5%	\$4,584,546	7.1%	\$352,657	-34.1%	\$350,000	-36.6%	\$213	-16.7%	90	15	75	17	5.9	95.5%
YTD:	148	28.7%	\$62,331,479	-13.2%	\$421,159	-32.5%	\$395,000	-20.2%	\$232	-19.4%	74	257	97	151		94.9%
Single Family	13	62.5%	\$4,584,546	7.1%	\$352,657	-34.1%	\$350,000	-36.6%	\$213	-16.7%	90	13	71	16	5.6	95.5%
YTD:	148	28.7%	\$62,331,479	-13.2%	\$421,159	-32.5%	\$395,000	-20.2%	\$232	-19.4%	74	245	89	150		94.9%
Townhouse	-	0.0%	-	0.0%	-	0.0%	-	0.0%	-	0.0%	-	-	-	-	-	0.0%
YTD:	-	0.0%	-	0.0%	-	0.0%	-	0.0%	-	0.0%	-	-	-	-	-	0.0%
Condominium	-	0.0%	-	0.0%	-	0.0%	-	0.0%	-	0.0%	-	2	4	1	-	0.0%
YTD:	-	0.0%	-	0.0%	-	0.0%	-	0.0%	-	0.0%	-	12	8	1		0.0%

* Local Market Area Code: CHC; Type: Custom Defined Market

** Closed Sale counts for most recent 3 months are Preliminary.

Market Analysis By Local Market Area*: Fredericksburg

Property Type	Closed Sales**	YoY%	Dollar Volume	YoY%	Average Price	YoY%	Median Price	YoY%	Price/Sqft	YoY%	DOM	New Listings	Active Listings	Pending Sales	Months Inventory	Close To OLP
All(New and Existing)																
Residential (SF/COND/TH)	23	21.1%	\$10,710,847	-20.6%	\$465,689	-34.4%	\$413,000	-27.5%	\$246	-28.2%	62	24	182	24	7.7	95.4%
YTD:	271	51.4%	\$139,017,461	22.2%	\$512,980	-19.3%	\$460,000	-12.4%	\$290	-18.5%	92	506	176	192		92.9%
Single Family	23	21.1%	\$10,710,847	-20.6%	\$465,689	-34.4%	\$413,000	-27.5%	\$246	-28.2%	62	22	178	24	7.5	95.4%
YTD:	271	54.9%	\$139,017,461	24.6%	\$512,980	-19.6%	\$460,000	-12.0%	\$290	-19.3%	92	491	167	192		92.9%
Townhouse	-	0.0%	-	0.0%	-	0.0%	-	0.0%	-	0.0%	-	-	-	-	-	0.0%
YTD:	-	-100.0%	-	-100.0%	-	-100.0%	-	-100.0%	-	-100.0%	-	-	-	-	-	0.0%
Condominium	-	0.0%	-	0.0%	-	0.0%	-	0.0%	-	0.0%	-	2	4	-	-	0.0%
YTD:	-	0.0%	-	0.0%	-	0.0%	-	0.0%	-	0.0%	-	15	8	-	-	0.0%
Existing Home																
Residential (SF/COND/TH)	12	-25.0%	\$6,979,069	-41.7%	\$581,589	-22.2%	\$490,000	-22.8%	\$280	-21.8%	98	19	168	10	10.6	95.2%
YTD:	177	9.3%	\$104,520,774	-0.1%	\$590,513	-8.6%	\$501,095	-4.3%	\$335	-7.8%	121	379	150	88		91.9%
Single Family	12	-25.0%	\$6,979,069	-41.7%	\$581,589	-22.2%	\$490,000	-22.8%	\$280	-21.8%	98	19	165	10	10.4	95.2%
YTD:	177	12.0%	\$104,520,774	2.0%	\$590,513	-8.9%	\$501,095	-2.7%	\$335	-8.9%	121	373	148	88		91.9%
Townhouse	-	0.0%	-	0.0%	-	0.0%	-	0.0%	-	0.0%	-	-	-	-	-	0.0%
YTD:	-	-100.0%	-	-100.0%	-	-100.0%	-	-100.0%	-	-100.0%	-	-	-	-	-	0.0%
Condominium	-	0.0%	-	0.0%	-	0.0%	-	0.0%	-	0.0%	-	-	3	-	-	0.0%
YTD:	-	0.0%	-	0.0%	-	0.0%	-	0.0%	-	0.0%	-	6	2	-	-	0.0%
New Construction																
Residential (SF/COND/TH)	11	266.7%	\$3,720,188	143.3%	\$338,199	-33.7%	\$304,499	-42.4%	\$208	-19.3%	22	5	14	14	1.8	95.6%
YTD:	94	452.9%	\$34,427,491	276.5%	\$366,250	-31.9%	\$312,999	-40.8%	\$206	-29.0%	36	127	26	104		94.9%
Single Family	11	266.7%	\$3,720,188	143.3%	\$338,199	-33.7%	\$304,499	-42.4%	\$208	-19.3%	22	3	13	14	1.6	95.6%
YTD:	94	452.9%	\$34,427,491	276.5%	\$366,250	-31.9%	\$312,999	-40.8%	\$206	-29.0%	36	118	19	104		94.9%
Townhouse	-	0.0%	-	0.0%	-	0.0%	-	0.0%	-	0.0%	-	-	-	-	-	0.0%
YTD:	-	0.0%	-	0.0%	-	0.0%	-	0.0%	-	0.0%	-	-	-	-	-	0.0%
Condominium	-	0.0%	-	0.0%	-	0.0%	-	0.0%	-	0.0%	-	2	1	-	-	0.0%
YTD:	-	0.0%	-	0.0%	-	0.0%	-	0.0%	-	0.0%	-	9	6	-	-	0.0%

* Local Market Area Code: 335; Type: Census Place Group
 ** Closed Sale counts for most recent 3 months are Preliminary.

Market Analysis By Local Market Area*: Harper

Property Type	Closed Sales**	YoY%	Dollar Volume	YoY%	Average Price	YoY%	Median Price	YoY%	Price/Sqft	YoY%	DOM	New Listings	Active Listings	Pending Sales	Months Inventory	Close To OLP
All(New and Existing)																
Residential (SF/COND/TH)	-	0.0%	-	0.0%	-	0.0%	-	0.0%	-	0.0%	-	3	19	-	10.4	0.0%
YTD:	18	-28.0%	\$6,047,000	-45.2%	\$335,944	-23.9%	\$320,500	-21.8%	\$198	-31.4%	88	48	18	14		93.0%
Single Family	-	0.0%	-	0.0%	-	0.0%	-	0.0%	-	0.0%	-	3	19	-	10.4	0.0%
YTD:	18	-28.0%	\$6,047,000	-45.2%	\$335,944	-23.9%	\$320,500	-21.8%	\$198	-31.4%	88	48	18	14		93.0%
Townhouse	-	0.0%	-	0.0%	-	0.0%	-	0.0%	-	0.0%	-	-	-	-	-	0.0%
YTD:	-	0.0%	-	0.0%	-	0.0%	-	0.0%	-	0.0%	-	-	-	-	-	0.0%
Condominium	-	0.0%	-	0.0%	-	0.0%	-	0.0%	-	0.0%	-	-	-	-	-	0.0%
YTD:	-	0.0%	-	0.0%	-	0.0%	-	0.0%	-	0.0%	-	-	-	-	-	0.0%
Existing Home																
Residential (SF/COND/TH)	-	0.0%	-	0.0%	-	0.0%	-	0.0%	-	0.0%	-	3	18	-	10.8	0.0%
YTD:	18	5.9%	\$6,047,000	-16.4%	\$335,944	-21.1%	\$320,500	-19.9%	\$198	-29.0%	88	47	17	14		93.0%
Single Family	-	0.0%	-	0.0%	-	0.0%	-	0.0%	-	0.0%	-	3	18	-	10.8	0.0%
YTD:	18	5.9%	\$6,047,000	-16.4%	\$335,944	-21.1%	\$320,500	-19.9%	\$198	-29.0%	88	47	17	14		93.0%
Townhouse	-	0.0%	-	0.0%	-	0.0%	-	0.0%	-	0.0%	-	-	-	-	-	0.0%
YTD:	-	0.0%	-	0.0%	-	0.0%	-	0.0%	-	0.0%	-	-	-	-	-	0.0%
Condominium	-	0.0%	-	0.0%	-	0.0%	-	0.0%	-	0.0%	-	-	-	-	-	0.0%
YTD:	-	0.0%	-	0.0%	-	0.0%	-	0.0%	-	0.0%	-	-	-	-	-	0.0%
New Construction																
Residential (SF/COND/TH)	-	0.0%	-	0.0%	-	0.0%	-	0.0%	-	0.0%	-	-	1	-	6.0	0.0%
YTD:	-	-100.0%	-	-100.0%	-	-100.0%	-	-100.0%	-	-100.0%	-	1	1	-		0.0%
Single Family	-	0.0%	-	0.0%	-	0.0%	-	0.0%	-	0.0%	-	-	1	-	6.0	0.0%
YTD:	-	-100.0%	-	-100.0%	-	-100.0%	-	-100.0%	-	-100.0%	-	1	1	-		0.0%
Townhouse	-	0.0%	-	0.0%	-	0.0%	-	0.0%	-	0.0%	-	-	-	-	-	0.0%
YTD:	-	0.0%	-	0.0%	-	0.0%	-	0.0%	-	0.0%	-	-	-	-	-	0.0%
Condominium	-	0.0%	-	0.0%	-	0.0%	-	0.0%	-	0.0%	-	-	-	-	-	0.0%
YTD:	-	0.0%	-	0.0%	-	0.0%	-	0.0%	-	0.0%	-	-	-	-	-	0.0%

* Local Market Area Code: 404; Type: Census Place Group
 ** Closed Sale counts for most recent 3 months are Preliminary.

Market Analysis By Local Market Area*: Johnson City

Property Type	Closed Sales**	YoY%	Dollar Volume	YoY%	Average Price	YoY%	Median Price	YoY%	Price/Sqft	YoY%	DOM	New Listings	Active Listings	Pending Sales	Months Inventory	Close To OLP
All(New and Existing)																
Residential (SF/COND/TH)	3	100.0%	\$1,410,800	100.0%	\$470,267	100.0%	\$365,800	100.0%	\$278	100.0%	92	5	23	-	12.5	95.6%
YTD:	19	0.0%	\$8,188,300	13.6%	\$430,963	13.6%	\$365,000	-1.8%	\$258	-3.3%	52	46	16	19		91.9%
Single Family	3	100.0%	\$1,410,800	100.0%	\$470,267	100.0%	\$365,800	100.0%	\$278	100.0%	92	5	23	-	12.5	95.6%
YTD:	19	0.0%	\$8,188,300	13.6%	\$430,963	13.6%	\$365,000	-1.8%	\$258	-3.3%	52	46	16	19		91.9%
Townhouse	-	0.0%	-	0.0%	-	0.0%	-	0.0%	-	0.0%	-	-	-	-	-	0.0%
YTD:	-	0.0%	-	0.0%	-	0.0%	-	0.0%	-	0.0%	-	-	-	-	-	0.0%
Condominium	-	0.0%	-	0.0%	-	0.0%	-	0.0%	-	0.0%	-	-	-	-	-	0.0%
YTD:	-	0.0%	-	0.0%	-	0.0%	-	0.0%	-	0.0%	-	-	-	-	-	0.0%
Existing Home																
Residential (SF/COND/TH)	3	100.0%	\$1,410,800	100.0%	\$470,267	100.0%	\$365,800	100.0%	\$278	100.0%	92	4	22	-	12.0	95.6%
YTD:	19	5.6%	\$8,188,300	21.0%	\$430,963	14.7%	\$365,000	-1.6%	\$258	-3.0%	52	42	14	19		91.9%
Single Family	3	100.0%	\$1,410,800	100.0%	\$470,267	100.0%	\$365,800	100.0%	\$278	100.0%	92	4	22	-	12.0	95.6%
YTD:	19	5.6%	\$8,188,300	21.0%	\$430,963	14.7%	\$365,000	-1.6%	\$258	-3.0%	52	42	14	19		91.9%
Townhouse	-	0.0%	-	0.0%	-	0.0%	-	0.0%	-	0.0%	-	-	-	-	-	0.0%
YTD:	-	0.0%	-	0.0%	-	0.0%	-	0.0%	-	0.0%	-	-	-	-	-	0.0%
Condominium	-	0.0%	-	0.0%	-	0.0%	-	0.0%	-	0.0%	-	-	-	-	-	0.0%
YTD:	-	0.0%	-	0.0%	-	0.0%	-	0.0%	-	0.0%	-	-	-	-	-	0.0%
New Construction																
Residential (SF/COND/TH)	-	0.0%	-	0.0%	-	0.0%	-	0.0%	-	0.0%	-	1	1	-	-	0.0%
YTD:	-	-100.0%	-	-100.0%	-	-100.0%	-	-100.0%	-	-100.0%	-	4	2	-	-	0.0%
Single Family	-	0.0%	-	0.0%	-	0.0%	-	0.0%	-	0.0%	-	1	1	-	-	0.0%
YTD:	-	-100.0%	-	-100.0%	-	-100.0%	-	-100.0%	-	-100.0%	-	4	2	-	-	0.0%
Townhouse	-	0.0%	-	0.0%	-	0.0%	-	0.0%	-	0.0%	-	-	-	-	-	0.0%
YTD:	-	0.0%	-	0.0%	-	0.0%	-	0.0%	-	0.0%	-	-	-	-	-	0.0%
Condominium	-	0.0%	-	0.0%	-	0.0%	-	0.0%	-	0.0%	-	-	-	-	-	0.0%
YTD:	-	0.0%	-	0.0%	-	0.0%	-	0.0%	-	0.0%	-	-	-	-	-	0.0%

* Local Market Area Code: 484; Type: Census Place Group
 ** Closed Sale counts for most recent 3 months are Preliminary.

Market Analysis By Local Market Area*: Junction

Property Type	Closed Sales**	YoY%	Dollar Volume	YoY%	Average Price	YoY%	Median Price	YoY%	Price/Sqft	YoY%	DOM	New Listings	Active Listings	Pending Sales	Months Inventory	Close To OLP
All(New and Existing)																
Residential (SF/COND/TH)	1	100.0%	\$155,000	100.0%	\$155,000	100.0%	\$155,000	100.0%	\$112	100.0%	66	2	8	1	12.0	89.1%
YTD:	7	40.0%	\$824,000	9.7%	\$117,714	-21.7%	\$130,000	-13.3%	\$109	-26.0%	49	15	5	7		91.3%
Single Family	1	100.0%	\$155,000	100.0%	\$155,000	100.0%	\$155,000	100.0%	\$112	100.0%	66	2	8	1	12.0	89.1%
YTD:	7	40.0%	\$824,000	9.7%	\$117,714	-21.7%	\$130,000	-13.3%	\$109	-26.0%	49	15	5	7		91.3%
Townhouse	-	0.0%	-	0.0%	-	0.0%	-	0.0%	-	0.0%	-	-	-	-	-	0.0%
YTD:	-	0.0%	-	0.0%	-	0.0%	-	0.0%	-	0.0%	-	-	-	-	-	0.0%
Condominium	-	0.0%	-	0.0%	-	0.0%	-	0.0%	-	0.0%	-	-	-	-	-	0.0%
YTD:	-	0.0%	-	0.0%	-	0.0%	-	0.0%	-	0.0%	-	-	-	-	-	0.0%
Existing Home																
Residential (SF/COND/TH)	1	100.0%	\$155,000	100.0%	\$155,000	100.0%	\$155,000	100.0%	\$112	100.0%	66	2	8	1	12.0	89.1%
YTD:	7	40.0%	\$824,000	9.7%	\$117,714	-21.7%	\$130,000	-13.3%	\$109	-26.0%	49	15	5	7		91.3%
Single Family	1	100.0%	\$155,000	100.0%	\$155,000	100.0%	\$155,000	100.0%	\$112	100.0%	66	2	8	1	12.0	89.1%
YTD:	7	40.0%	\$824,000	9.7%	\$117,714	-21.7%	\$130,000	-13.3%	\$109	-26.0%	49	15	5	7		91.3%
Townhouse	-	0.0%	-	0.0%	-	0.0%	-	0.0%	-	0.0%	-	-	-	-	-	0.0%
YTD:	-	0.0%	-	0.0%	-	0.0%	-	0.0%	-	0.0%	-	-	-	-	-	0.0%
Condominium	-	0.0%	-	0.0%	-	0.0%	-	0.0%	-	0.0%	-	-	-	-	-	0.0%
YTD:	-	0.0%	-	0.0%	-	0.0%	-	0.0%	-	0.0%	-	-	-	-	-	0.0%
New Construction																
Residential (SF/COND/TH)	-	0.0%	-	0.0%	-	0.0%	-	0.0%	-	0.0%	-	-	-	-	-	0.0%
YTD:	-	0.0%	-	0.0%	-	0.0%	-	0.0%	-	0.0%	-	-	-	-	-	0.0%
Single Family	-	0.0%	-	0.0%	-	0.0%	-	0.0%	-	0.0%	-	-	-	-	-	0.0%
YTD:	-	0.0%	-	0.0%	-	0.0%	-	0.0%	-	0.0%	-	-	-	-	-	0.0%
Townhouse	-	0.0%	-	0.0%	-	0.0%	-	0.0%	-	0.0%	-	-	-	-	-	0.0%
YTD:	-	0.0%	-	0.0%	-	0.0%	-	0.0%	-	0.0%	-	-	-	-	-	0.0%
Condominium	-	0.0%	-	0.0%	-	0.0%	-	0.0%	-	0.0%	-	-	-	-	-	0.0%
YTD:	-	0.0%	-	0.0%	-	0.0%	-	0.0%	-	0.0%	-	-	-	-	-	0.0%

* Local Market Area Code: 490; Type: Census Place Group
 ** Closed Sale counts for most recent 3 months are Preliminary.

Market Analysis By Local Market Area*: Mason

Property Type	Closed Sales**	YoY%	Dollar Volume	YoY%	Average Price	YoY%	Median Price	YoY%	Price/Sqft	YoY%	DOM	New Listings	Active Listings	Pending Sales	Months Inventory	Close To OLP
All(New and Existing)																
Residential (SF/COND/TH)	-	-100.0%	-	-100.0%	-	-100.0%	-	-100.0%	-	-100.0%	-	2	29	2	21.8	0.0%
YTD:	14	-44.0%	\$3,426,500	-53.1%	\$244,750	-16.3%	\$222,250	-8.4%	\$177	-5.5%	165	45	21	7		89.8%
Single Family	-	-100.0%	-	-100.0%	-	-100.0%	-	-100.0%	-	-100.0%	-	2	29	2	21.8	0.0%
YTD:	14	-44.0%	\$3,426,500	-53.1%	\$244,750	-16.3%	\$222,250	-8.4%	\$177	-5.5%	165	45	21	7		89.8%
Townhouse	-	0.0%	-	0.0%	-	0.0%	-	0.0%	-	0.0%	-	-	-	-	-	0.0%
YTD:	-	0.0%	-	0.0%	-	0.0%	-	0.0%	-	0.0%	-	-	-	-	-	0.0%
Condominium	-	0.0%	-	0.0%	-	0.0%	-	0.0%	-	0.0%	-	-	-	-	-	0.0%
YTD:	-	0.0%	-	0.0%	-	0.0%	-	0.0%	-	0.0%	-	-	-	-	-	0.0%
Existing Home																
Residential (SF/COND/TH)	-	-100.0%	-	-100.0%	-	-100.0%	-	-100.0%	-	-100.0%	-	2	26	2	19.5	0.0%
YTD:	14	-44.0%	\$3,426,500	-53.1%	\$244,750	-16.3%	\$222,250	-8.4%	\$177	-5.5%	165	42	20	7		89.8%
Single Family	-	-100.0%	-	-100.0%	-	-100.0%	-	-100.0%	-	-100.0%	-	2	26	2	19.5	0.0%
YTD:	14	-44.0%	\$3,426,500	-53.1%	\$244,750	-16.3%	\$222,250	-8.4%	\$177	-5.5%	165	42	20	7		89.8%
Townhouse	-	0.0%	-	0.0%	-	0.0%	-	0.0%	-	0.0%	-	-	-	-	-	0.0%
YTD:	-	0.0%	-	0.0%	-	0.0%	-	0.0%	-	0.0%	-	-	-	-	-	0.0%
Condominium	-	0.0%	-	0.0%	-	0.0%	-	0.0%	-	0.0%	-	-	-	-	-	0.0%
YTD:	-	0.0%	-	0.0%	-	0.0%	-	0.0%	-	0.0%	-	-	-	-	-	0.0%
New Construction																
Residential (SF/COND/TH)	-	0.0%	-	0.0%	-	0.0%	-	0.0%	-	0.0%	-	-	3	-	-	0.0%
YTD:	-	0.0%	-	0.0%	-	0.0%	-	0.0%	-	0.0%	-	3	3	-	-	0.0%
Single Family	-	0.0%	-	0.0%	-	0.0%	-	0.0%	-	0.0%	-	-	3	-	-	0.0%
YTD:	-	0.0%	-	0.0%	-	0.0%	-	0.0%	-	0.0%	-	3	3	-	-	0.0%
Townhouse	-	0.0%	-	0.0%	-	0.0%	-	0.0%	-	0.0%	-	-	-	-	-	0.0%
YTD:	-	0.0%	-	0.0%	-	0.0%	-	0.0%	-	0.0%	-	-	-	-	-	0.0%
Condominium	-	0.0%	-	0.0%	-	0.0%	-	0.0%	-	0.0%	-	-	-	-	-	0.0%
YTD:	-	0.0%	-	0.0%	-	0.0%	-	0.0%	-	0.0%	-	-	-	-	-	0.0%

* Local Market Area Code: 620; Type: Census Place Group
 ** Closed Sale counts for most recent 3 months are Preliminary.

Market Analysis By Local Market Area*: Round Mountain

Property Type	Closed Sales**	YoY%	Dollar Volume	YoY%	Average Price	YoY%	Median Price	YoY%	Price/Sqft	YoY%	DOM	New Listings	Active Listings	Pending Sales	Months Inventory	Close To OLP
All(New and Existing)																
Residential (SF/COND/TH)	-	0.0%	-	0.0%	-	0.0%	-	0.0%	-	0.0%	-	-	2	-	12.0	0.0%
YTD:	2	100.0%	\$3,162,500	100.0%	\$1,581,250	100.0%	\$1,581,250	100.0%	\$752	100.0%	104	4	2	2		88.5%
Single Family	-	0.0%	-	0.0%	-	0.0%	-	0.0%	-	0.0%	-	-	2	-	12.0	0.0%
YTD:	2	100.0%	\$3,162,500	100.0%	\$1,581,250	100.0%	\$1,581,250	100.0%	\$752	100.0%	104	4	2	2		88.5%
Townhouse	-	0.0%	-	0.0%	-	0.0%	-	0.0%	-	0.0%	-	-	-	-	-	0.0%
YTD:	-	0.0%	-	0.0%	-	0.0%	-	0.0%	-	0.0%	-	-	-	-	-	0.0%
Condominium	-	0.0%	-	0.0%	-	0.0%	-	0.0%	-	0.0%	-	-	-	-	-	0.0%
YTD:	-	0.0%	-	0.0%	-	0.0%	-	0.0%	-	0.0%	-	-	-	-	-	0.0%
Existing Home																
Residential (SF/COND/TH)	-	0.0%	-	0.0%	-	0.0%	-	0.0%	-	0.0%	-	-	2	-	12.0	0.0%
YTD:	2	100.0%	\$3,162,500	100.0%	\$1,581,250	100.0%	\$1,581,250	100.0%	\$752	100.0%	104	2	2	2		88.5%
Single Family	-	0.0%	-	0.0%	-	0.0%	-	0.0%	-	0.0%	-	-	2	-	12.0	0.0%
YTD:	2	100.0%	\$3,162,500	100.0%	\$1,581,250	100.0%	\$1,581,250	100.0%	\$752	100.0%	104	2	2	2		88.5%
Townhouse	-	0.0%	-	0.0%	-	0.0%	-	0.0%	-	0.0%	-	-	-	-	-	0.0%
YTD:	-	0.0%	-	0.0%	-	0.0%	-	0.0%	-	0.0%	-	-	-	-	-	0.0%
Condominium	-	0.0%	-	0.0%	-	0.0%	-	0.0%	-	0.0%	-	-	-	-	-	0.0%
YTD:	-	0.0%	-	0.0%	-	0.0%	-	0.0%	-	0.0%	-	-	-	-	-	0.0%
New Construction																
Residential (SF/COND/TH)	-	0.0%	-	0.0%	-	0.0%	-	0.0%	-	0.0%	-	-	-	-	-	0.0%
YTD:	-	0.0%	-	0.0%	-	0.0%	-	0.0%	-	0.0%	-	2	1	-	-	0.0%
Single Family	-	0.0%	-	0.0%	-	0.0%	-	0.0%	-	0.0%	-	-	-	-	-	0.0%
YTD:	-	0.0%	-	0.0%	-	0.0%	-	0.0%	-	0.0%	-	2	1	-	-	0.0%
Townhouse	-	0.0%	-	0.0%	-	0.0%	-	0.0%	-	0.0%	-	-	-	-	-	0.0%
YTD:	-	0.0%	-	0.0%	-	0.0%	-	0.0%	-	0.0%	-	-	-	-	-	0.0%
Condominium	-	0.0%	-	0.0%	-	0.0%	-	0.0%	-	0.0%	-	-	-	-	-	0.0%
YTD:	-	0.0%	-	0.0%	-	0.0%	-	0.0%	-	0.0%	-	-	-	-	-	0.0%

* Local Market Area Code: 871; Type: Census Place Group
 ** Closed Sale counts for most recent 3 months are Preliminary.

Market Analysis By Local Market Area*: Stonewall

Property Type	Closed Sales**	YoY%	Dollar Volume	YoY%	Average Price	YoY%	Median Price	YoY%	Price/Sqft	YoY%	DOM	New Listings	Active Listings	Pending Sales	Months Inventory	Close To OLP
All(New and Existing)																
Residential (SF/COND/TH)	-	0.0%	-	0.0%	-	0.0%	-	0.0%	-	0.0%	-	-	2	-	4.0	0.0%
YTD:	5	400.0%	\$6,889,000	925.2%	\$1,377,800	105.0%	\$449,000	-33.2%	\$477	6.4%	67	7	2	4		82.5%
Single Family	-	0.0%	-	0.0%	-	0.0%	-	0.0%	-	0.0%	-	-	2	-	4.0	0.0%
YTD:	5	400.0%	\$6,889,000	925.2%	\$1,377,800	105.0%	\$449,000	-33.2%	\$477	6.4%	67	7	2	4		82.5%
Townhouse	-	0.0%	-	0.0%	-	0.0%	-	0.0%	-	0.0%	-	-	-	-	-	0.0%
YTD:	-	0.0%	-	0.0%	-	0.0%	-	0.0%	-	0.0%	-	-	-	-	-	0.0%
Condominium	-	0.0%	-	0.0%	-	0.0%	-	0.0%	-	0.0%	-	-	-	-	-	0.0%
YTD:	-	0.0%	-	0.0%	-	0.0%	-	0.0%	-	0.0%	-	-	-	-	-	0.0%
Existing Home																
Residential (SF/COND/TH)	-	0.0%	-	0.0%	-	0.0%	-	0.0%	-	0.0%	-	-	2	-	4.0	0.0%
YTD:	5	400.0%	\$6,889,000	925.2%	\$1,377,800	105.0%	\$449,000	-33.2%	\$477	6.4%	67	7	2	4		82.5%
Single Family	-	0.0%	-	0.0%	-	0.0%	-	0.0%	-	0.0%	-	-	2	-	4.0	0.0%
YTD:	5	400.0%	\$6,889,000	925.2%	\$1,377,800	105.0%	\$449,000	-33.2%	\$477	6.4%	67	7	2	4		82.5%
Townhouse	-	0.0%	-	0.0%	-	0.0%	-	0.0%	-	0.0%	-	-	-	-	-	0.0%
YTD:	-	0.0%	-	0.0%	-	0.0%	-	0.0%	-	0.0%	-	-	-	-	-	0.0%
Condominium	-	0.0%	-	0.0%	-	0.0%	-	0.0%	-	0.0%	-	-	-	-	-	0.0%
YTD:	-	0.0%	-	0.0%	-	0.0%	-	0.0%	-	0.0%	-	-	-	-	-	0.0%
New Construction																
Residential (SF/COND/TH)	-	0.0%	-	0.0%	-	0.0%	-	0.0%	-	0.0%	-	-	-	-	-	0.0%
YTD:	-	0.0%	-	0.0%	-	0.0%	-	0.0%	-	0.0%	-	-	-	-	-	0.0%
Single Family	-	0.0%	-	0.0%	-	0.0%	-	0.0%	-	0.0%	-	-	-	-	-	0.0%
YTD:	-	0.0%	-	0.0%	-	0.0%	-	0.0%	-	0.0%	-	-	-	-	-	0.0%
Townhouse	-	0.0%	-	0.0%	-	0.0%	-	0.0%	-	0.0%	-	-	-	-	-	0.0%
YTD:	-	0.0%	-	0.0%	-	0.0%	-	0.0%	-	0.0%	-	-	-	-	-	0.0%
Condominium	-	0.0%	-	0.0%	-	0.0%	-	0.0%	-	0.0%	-	-	-	-	-	0.0%
YTD:	-	0.0%	-	0.0%	-	0.0%	-	0.0%	-	0.0%	-	-	-	-	-	0.0%

* Local Market Area Code: 966; Type: Census Place Group
 ** Closed Sale counts for most recent 3 months are Preliminary.

