

Market Analysis By State: Texas

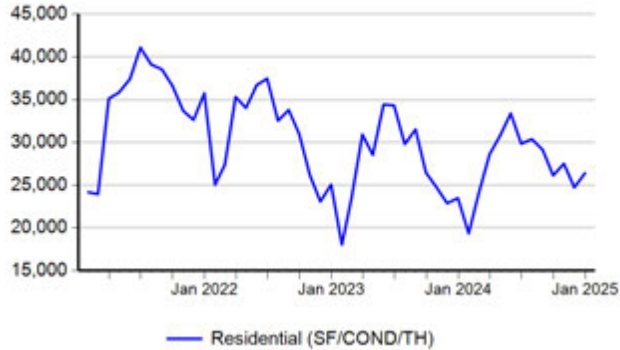
Property Type	Closed Sales*	YoY%	Dollar Volume	YoY%	Average Price	YoY%	Median Price	YoY%	Price/Sqft	YoY%	DOM	New Listings	Active Listings	Pending Sales	Months Inventory	Close To OLP
All(New and Existing)																
Residential (SF/COND/TH)	26,402	12.5%	\$11,325,640,069	17.7%	\$428,969	4.6%	\$340,000	1.5%	\$190	2.1%	69	30,112	114,973	20,387	4.2	93.8%
YTD:	330,218	0.5%	\$139,282,050,940	2.6%	\$421,788	2.1%	\$339,000	1.2%	\$191	1.0%	60	545,567	115,806	329,059		94.8%
Single Family	25,031	12.6%	\$10,831,632,893	17.9%	\$432,729	4.7%	\$342,993	2.1%	\$188	2.2%	68	28,169	105,993	19,276	4.1	93.9%
YTD:	312,002	1.1%	\$132,811,065,934	3.1%	\$425,674	2.0%	\$340,000	0.3%	\$189	1.2%	59	507,444	106,606	311,003		94.8%
Townhouse	621	5.3%	\$234,139,461	13.4%	\$377,036	7.7%	\$330,000	6.5%	\$199	4.9%	66	853	3,254	503	4.7	94.3%
YTD:	8,322	-3.7%	\$2,999,881,657	-1.7%	\$360,476	2.1%	\$325,330	0.1%	\$197	1.3%	55	15,837	3,207	8,275		95.3%
Condominium	730	13.2%	\$253,420,593	11.2%	\$347,151	-1.8%	\$255,000	4.1%	\$253	-2.1%	78	1,090	5,726	608	7.0	92.4%
YTD:	9,860	-12.4%	\$3,460,054,804	-9.3%	\$350,918	3.6%	\$257,163	2.5%	\$263	-0.1%	65	22,286	5,992	9,781		93.3%
Existing Home																
Residential (SF/COND/TH)	18,143	13.5%	\$7,682,627,897	20.8%	\$423,449	6.5%	\$326,500	4.0%	\$190	3.4%	62	20,713	82,994	13,569	4.1	93.7%
YTD:	241,002	-1.7%	\$101,788,201,414	2.5%	\$422,354	4.2%	\$330,000	2.5%	\$192	2.1%	53	415,263	85,288	238,692		94.7%
Single Family	17,010	13.6%	\$7,293,365,463	21.1%	\$428,769	6.6%	\$330,000	4.8%	\$188	3.5%	61	19,081	75,511	12,629	4.0	93.8%
YTD:	225,396	-1.2%	\$96,487,025,341	2.9%	\$428,078	4.2%	\$335,000	3.1%	\$189	2.3%	53	382,516	77,637	223,214		94.7%
Townhouse	442	6.8%	\$163,259,014	16.0%	\$369,364	8.6%	\$312,000	5.8%	\$194	6.8%	60	644	2,350	370	4.5	94.0%
YTD:	6,314	-2.2%	\$2,201,233,215	0.6%	\$348,627	2.8%	\$305,000	0.3%	\$191	2.5%	48	12,145	2,269	6,293		95.3%
Condominium	676	13.8%	\$221,654,275	14.5%	\$327,891	0.6%	\$240,000	6.7%	\$248	0.0%	78	988	5,133	570	6.6	92.4%
YTD:	9,263	-12.0%	\$3,090,999,151	-9.2%	\$333,693	3.2%	\$247,000	2.5%	\$258	0.4%	64	20,602	5,381	9,185		93.3%
New Construction																
Residential (SF/COND/TH)	8,248	10.3%	\$3,638,709,622	11.4%	\$441,163	1.1%	\$362,764	-1.9%	\$190	-0.5%	84	9,399	31,979	6,818	4.3	94.0%
YTD:	89,190	6.8%	\$37,482,721,643	3.0%	\$420,257	-3.5%	\$351,950	-3.9%	\$190	-2.1%	77	130,304	30,517	90,367		95.0%
Single Family	8,017	10.5%	\$3,536,843,732	11.7%	\$441,168	1.1%	\$362,640	-2.0%	\$189	-0.3%	84	9,088	30,482	6,647	4.2	94.0%
YTD:	86,590	7.4%	\$36,316,548,357	3.4%	\$419,408	-3.7%	\$350,017	-4.1%	\$188	-1.9%	77	124,928	28,968	87,789		95.0%
Townhouse	178	1.1%	\$70,452,294	7.1%	\$395,799	5.9%	\$349,990	5.4%	\$211	1.3%	81	209	904	133	5.4	95.0%
YTD:	2,004	-8.3%	\$797,105,105	-7.6%	\$397,757	0.7%	\$366,897	-2.2%	\$215	-1.2%	79	3,692	937	1,982		95.4%
Condominium	52	2.0%	\$30,993,462	-9.6%	\$596,028	-11.3%	\$441,950	-15.8%	\$324	-15.7%	79	102	593	38	12.0	93.2%
YTD:	594	-19.4%	\$367,892,371	-11.0%	\$619,347	10.5%	\$473,840	0.8%	\$341	-3.4%	88	1,684	611	596		93.7%

* Closed Sale counts for most recent 3 months are Preliminary.

Trend Analysis By State: Texas

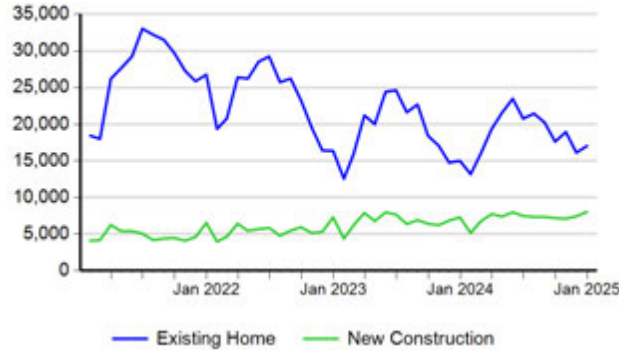
Residential, All (New and Existing)

Monthly Units Sold



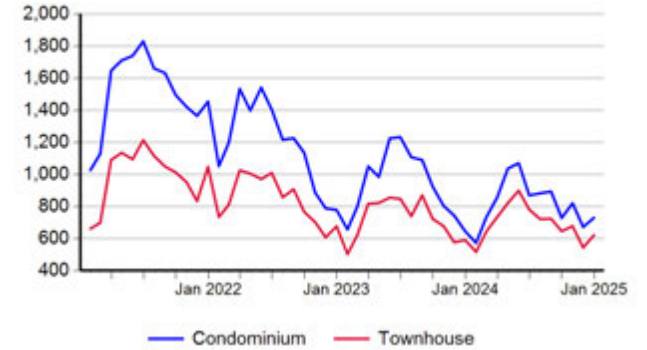
Single Family, New vs. Existing

Monthly Units Sold



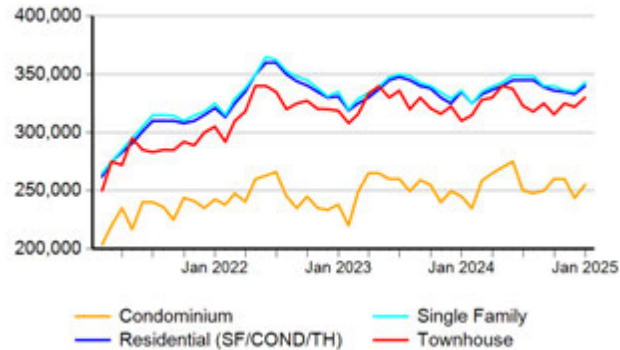
COND/TH, All (New and Existing)

Monthly Units Sold



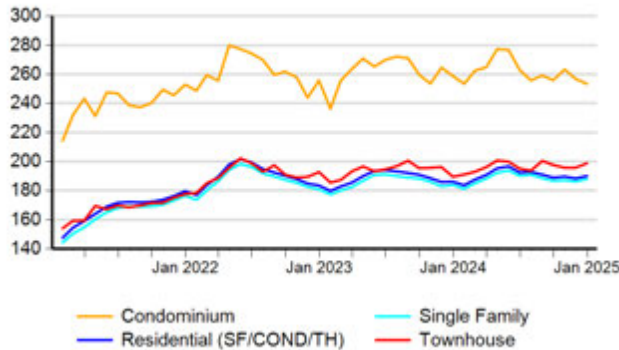
All (New and Existing) Construction

Median Sale Price



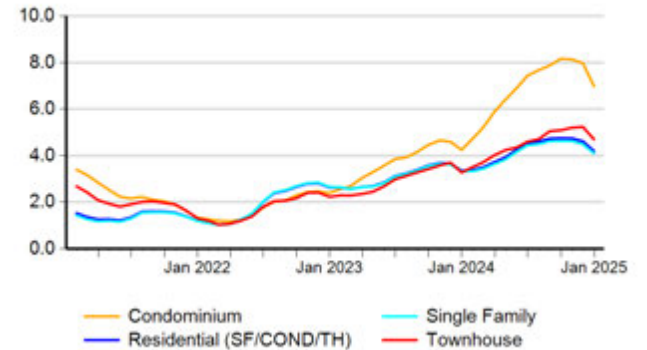
All (New and Existing) Construction

Average Close Price PSF



All (New and Existing) Construction

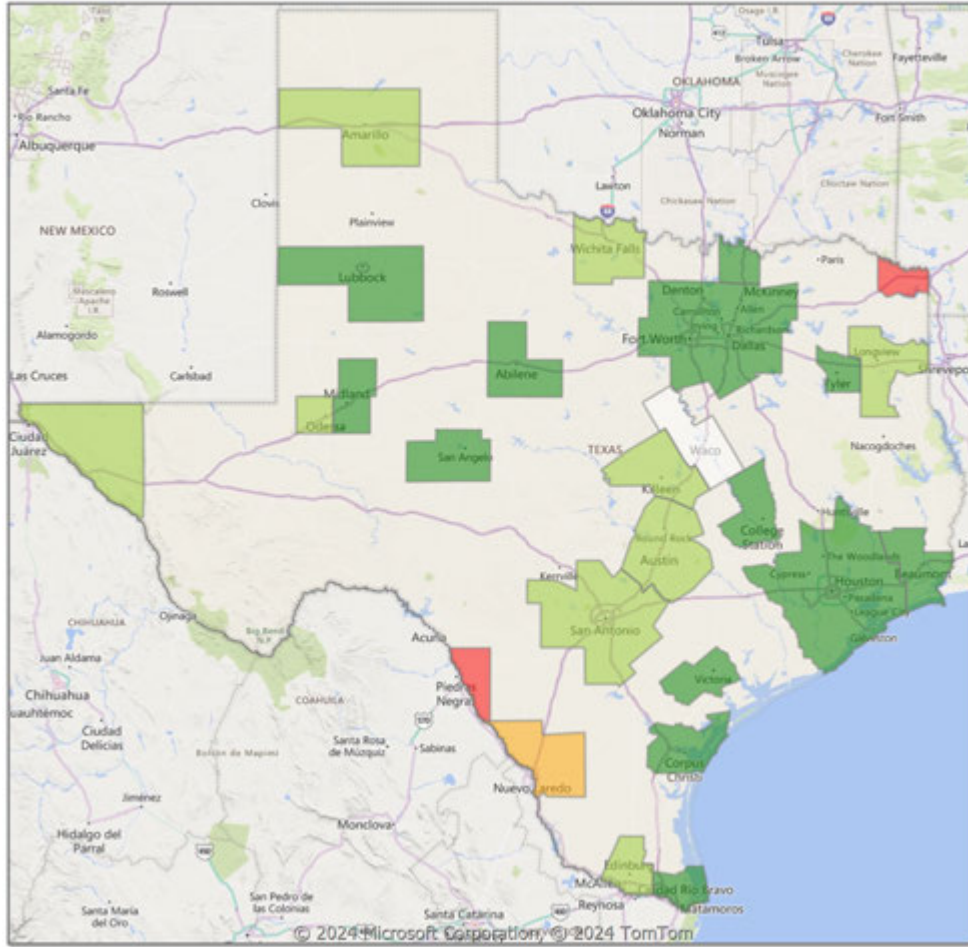
Months Inventory



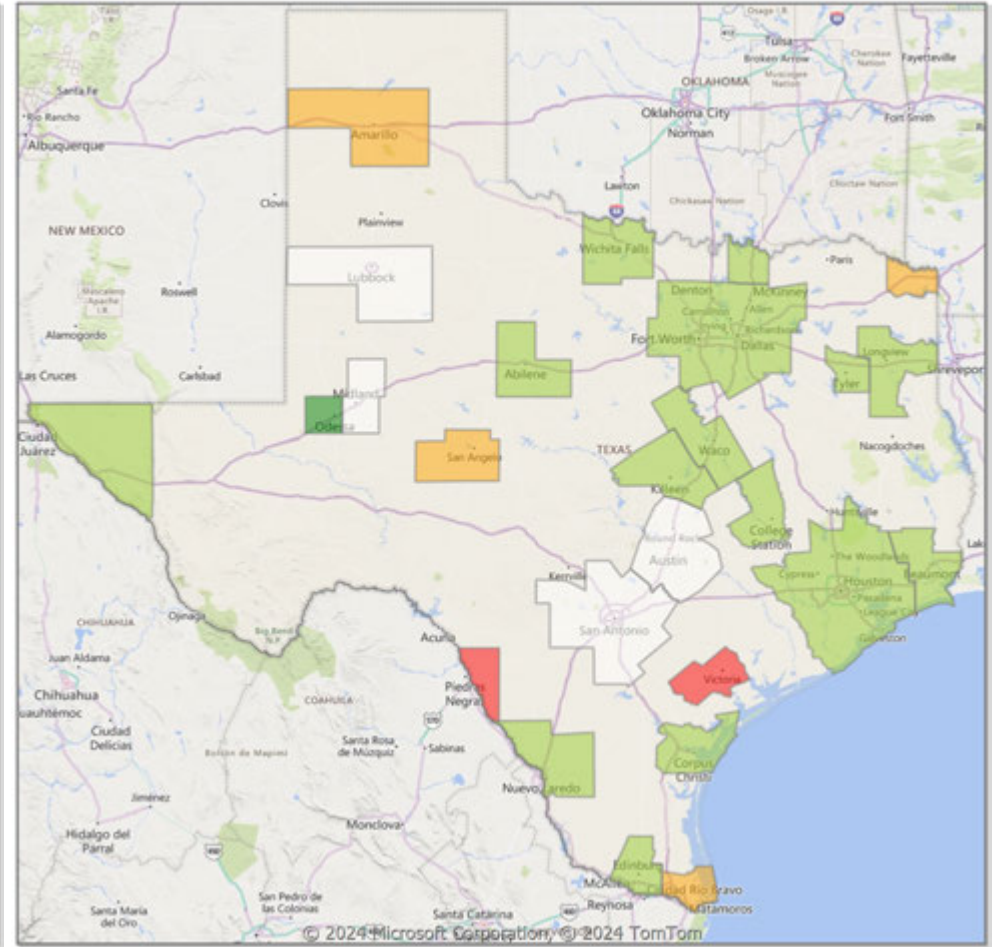
* Closed Sale counts for most recent 3 months are Preliminary.

Comparison By Metropolitan Statistical Area in Texas

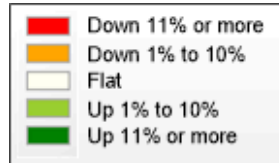
Residential* Closed Sales YoY Percentage Change



Residential* Avg Close Price Per SqFt YoY Percentage Change

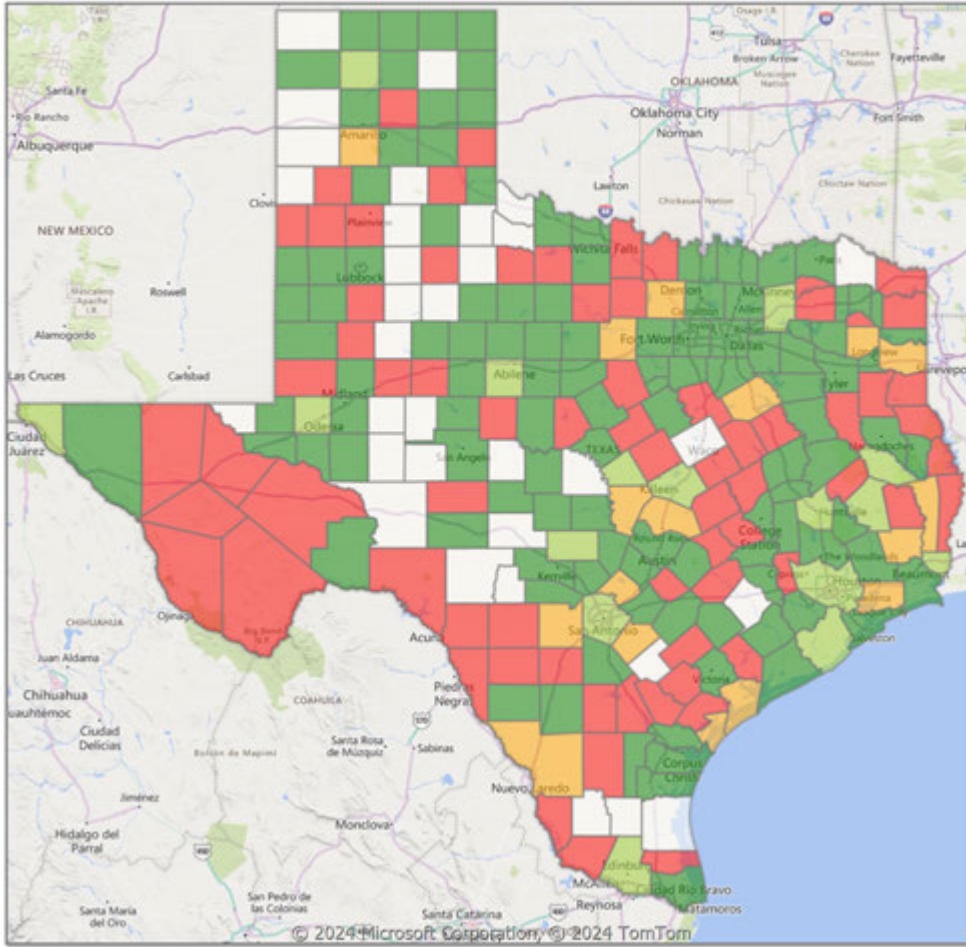


* Residential includes Single Family, Condominium and Townhouse.

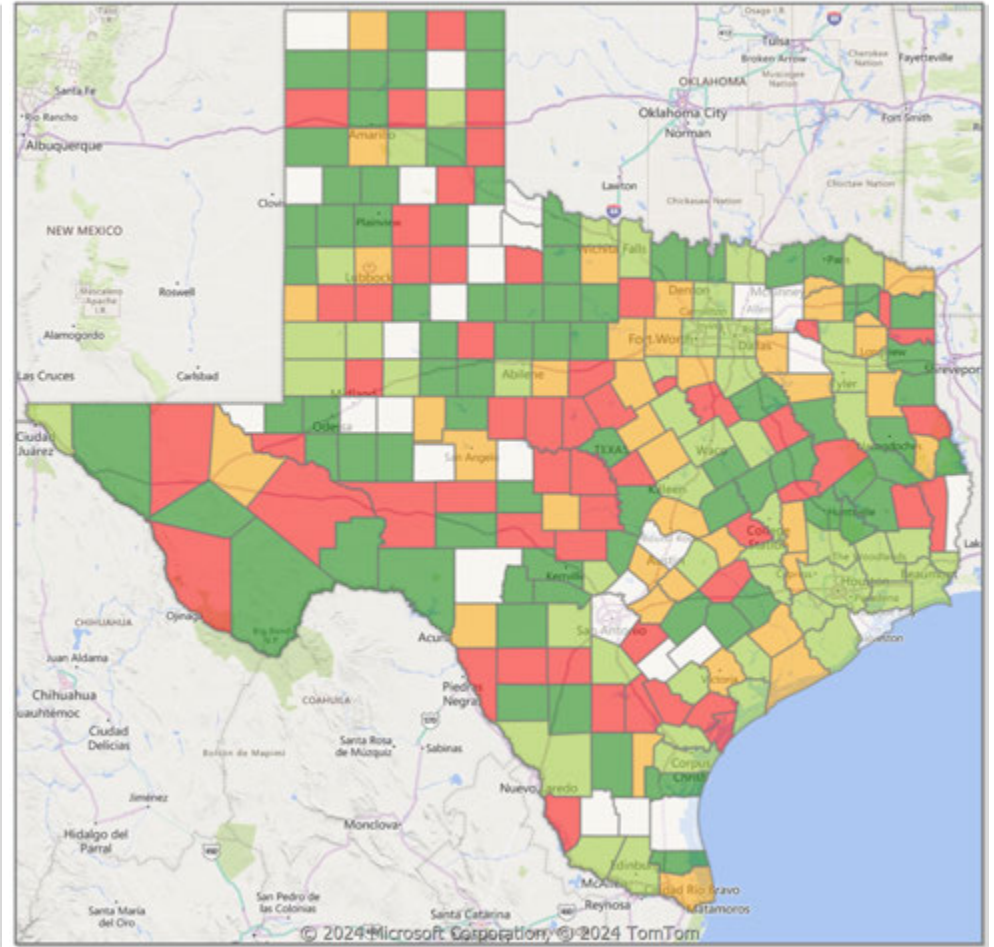


Comparison By County in Texas

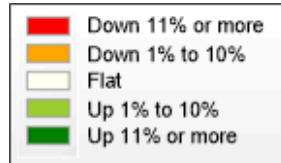
**Residential* Closed Sales
YoY Percentage Change**



**Residential* Avg Close Price Per SqFt
YoY Percentage Change**



* Residential includes Single Family, Condominium and Townhouse.



Market Analysis By County: Blanco County

Property Type	Closed Sales*	YoY%	Dollar Volume	YoY%	Average Price	YoY%	Median Price	YoY%	Price/Sqft	YoY%	DOM	New Listings	Active Listings	Pending Sales	Months Inventory	Close To OLP
All(New and Existing)																
Residential (SF/COND/TH)	13	85.7%	\$8,034,000	222.9%	\$618,000	73.9%	\$475,000	70.9%	\$303	45.2%	150	19	132	8	10.0	92.8%
YTD:	158	-3.7%	\$89,468,648	-6.6%	\$566,257	-3.0%	\$475,000	1.3%	\$320	10.3%	110	345	155	153		93.4%
Single Family	13	85.7%	\$8,034,000	222.9%	\$618,000	73.9%	\$475,000	70.9%	\$303	45.2%	150	19	131	8	9.9	92.8%
YTD:	158	-3.7%	\$89,468,648	-6.6%	\$566,257	-3.0%	\$475,000	1.3%	\$320	10.3%	110	342	154	153		93.4%
Townhouse	-	0.0%	-	0.0%	-	0.0%	-	0.0%	-	0.0%	-	-	-	-	-	0.0%
YTD:	-	0.0%	-	0.0%	-	0.0%	-	0.0%	-	0.0%	-	-	-	-	-	0.0%
Condominium	-	0.0%	-	0.0%	-	0.0%	-	0.0%	-	0.0%	-	-	1	-	-	0.0%
YTD:	-	0.0%	-	0.0%	-	0.0%	-	0.0%	-	0.0%	-	3	1	-	-	0.0%
Existing Home																
Residential (SF/COND/TH)	11	83.3%	\$7,081,800	257.1%	\$643,800	94.8%	\$475,000	71.8%	\$314	51.4%	122	11	100	7	10.4	93.6%
YTD:	115	8.5%	\$68,794,625	16.9%	\$598,214	7.8%	\$482,000	5.4%	\$351	16.7%	96	250	104	113		92.5%
Single Family	11	83.3%	\$7,081,800	257.1%	\$643,800	94.8%	\$475,000	71.8%	\$314	51.4%	122	11	99	7	10.3	93.6%
YTD:	115	8.5%	\$68,794,625	16.9%	\$598,214	7.8%	\$482,000	5.4%	\$351	16.7%	96	247	103	113		92.5%
Townhouse	-	0.0%	-	0.0%	-	0.0%	-	0.0%	-	0.0%	-	-	-	-	-	0.0%
YTD:	-	0.0%	-	0.0%	-	0.0%	-	0.0%	-	0.0%	-	-	-	-	-	0.0%
Condominium	-	0.0%	-	0.0%	-	0.0%	-	0.0%	-	0.0%	-	-	1	-	-	0.0%
YTD:	-	0.0%	-	0.0%	-	0.0%	-	0.0%	-	0.0%	-	3	1	-	-	0.0%
New Construction																
Residential (SF/COND/TH)	2	100.0%	\$978,000	93.7%	\$489,000	-3.2%	\$489,000	-3.2%	\$251	14.8%	293	8	32	1	8.9	89.0%
YTD:	43	-25.9%	\$20,705,980	-43.9%	\$481,534	-24.3%	\$435,000	-7.5%	\$236	-13.0%	147	95	51	40		95.6%
Single Family	2	100.0%	\$978,000	93.7%	\$489,000	-3.2%	\$489,000	-3.2%	\$251	14.8%	293	8	32	1	8.9	89.0%
YTD:	43	-25.9%	\$20,705,980	-43.9%	\$481,534	-24.3%	\$435,000	-7.5%	\$236	-13.0%	147	95	51	40		95.6%
Townhouse	-	0.0%	-	0.0%	-	0.0%	-	0.0%	-	0.0%	-	-	-	-	-	0.0%
YTD:	-	0.0%	-	0.0%	-	0.0%	-	0.0%	-	0.0%	-	-	-	-	-	0.0%
Condominium	-	0.0%	-	0.0%	-	0.0%	-	0.0%	-	0.0%	-	-	-	-	-	0.0%
YTD:	-	0.0%	-	0.0%	-	0.0%	-	0.0%	-	0.0%	-	-	-	-	-	0.0%

* Closed Sale counts for most recent 3 months are Preliminary.

Market Analysis By County: Gillespie County

Property Type	Closed Sales*	YoY%	Dollar Volume	YoY%	Average Price	YoY%	Median Price	YoY%	Price/Sqft	YoY%	DOM	New Listings	Active Listings	Pending Sales	Months Inventory	Close To OLP
All(New and Existing)																
Residential (SF/COND/TH)	30	3.5%	\$22,459,541	47.6%	\$748,651	42.7%	\$459,000	2.2%	\$306	-11.4%	87	59	317	23	8.7	93.5%
YTD:	437	20.1%	\$284,067,849	9.3%	\$650,041	-8.9%	\$480,226	-11.8%	\$329	-7.6%	105	919	339	286		92.1%
Single Family	30	7.1%	\$22,459,541	50.3%	\$748,651	40.3%	\$459,000	-1.7%	\$306	-11.4%	87	59	309	22	8.5	93.5%
YTD:	437	21.7%	\$284,067,849	10.4%	\$650,041	-9.3%	\$480,226	-11.1%	\$329	-8.1%	105	894	320	285		92.1%
Townhouse	-	0.0%	-	0.0%	-	0.0%	-	0.0%	-	0.0%	-	-	-	-	-	0.0%
YTD:	-	-100.0%	-	-100.0%	-	-100.0%	-	-100.0%	-	-100.0%	-	-	-	-	-	0.0%
Condominium	-	-100.0%	-	-100.0%	-	-100.0%	-	-100.0%	-	0.0%	-	-	8	1	-	0.0%
YTD:	-	-100.0%	-	-100.0%	-	-100.0%	-	-100.0%	-	0.0%	-	25	18	1		0.0%
Existing Home																
Residential (SF/COND/TH)	20	-20.0%	\$19,263,439	44.3%	\$963,172	80.4%	\$604,700	24.7%	\$360	0.0%	101	44	283	20	10.6	92.5%
YTD:	320	5.6%	\$238,741,096	6.8%	\$746,066	1.2%	\$540,000	-3.2%	\$368	-0.3%	126	741	296	173		91.1%
Single Family	20	-16.7%	\$19,263,439	47.3%	\$963,172	76.8%	\$604,700	23.1%	\$360	0.0%	101	44	277	19	10.4	92.5%
YTD:	320	7.4%	\$238,741,096	8.0%	\$746,066	0.6%	\$540,000	-4.5%	\$368	-0.9%	126	728	285	172		91.1%
Townhouse	-	0.0%	-	0.0%	-	0.0%	-	0.0%	-	0.0%	-	-	-	-	-	0.0%
YTD:	-	-100.0%	-	-100.0%	-	-100.0%	-	-100.0%	-	-100.0%	-	-	-	-	-	0.0%
Condominium	-	-100.0%	-	-100.0%	-	-100.0%	-	-100.0%	-	0.0%	-	-	6	1	-	0.0%
YTD:	-	-100.0%	-	-100.0%	-	-100.0%	-	-100.0%	-	0.0%	-	13	11	1		0.0%
New Construction																
Residential (SF/COND/TH)	10	150.0%	\$3,196,102	71.7%	\$319,610	-31.3%	\$304,999	-31.5%	\$197	-22.9%	60	15	34	3	3.5	95.5%
YTD:	117	91.8%	\$45,255,562	24.5%	\$386,800	-35.1%	\$330,999	-36.4%	\$224	-24.3%	49	178	42	113		94.9%
Single Family	10	150.0%	\$3,196,102	71.7%	\$319,610	-31.3%	\$304,999	-31.5%	\$197	-22.9%	60	15	32	3	3.3	95.5%
YTD:	117	91.8%	\$45,255,562	24.5%	\$386,800	-35.1%	\$330,999	-36.4%	\$224	-24.3%	49	166	35	113		94.9%
Townhouse	-	0.0%	-	0.0%	-	0.0%	-	0.0%	-	0.0%	-	-	-	-	-	0.0%
YTD:	-	0.0%	-	0.0%	-	0.0%	-	0.0%	-	0.0%	-	-	-	-	-	0.0%
Condominium	-	0.0%	-	0.0%	-	0.0%	-	0.0%	-	0.0%	-	-	2	-	-	0.0%
YTD:	-	0.0%	-	0.0%	-	0.0%	-	0.0%	-	0.0%	-	12	7	-		0.0%

* Closed Sale counts for most recent 3 months are Preliminary.

Market Analysis By County: Kimble County

Property Type	Closed Sales*	YoY%	Dollar Volume	YoY%	Average Price	YoY%	Median Price	YoY%	Price/Sqft	YoY%	DOM	New Listings	Active Listings	Pending Sales	Months Inventory	Close To OLP
All(New and Existing)																
Residential (SF/COND/TH)	1	0.0%	\$168,900	-22.8%	\$168,900	-22.8%	\$168,900	-22.8%	\$87	-46.6%	322	-	16	1	10.7	91.3%
YTD:	18	80.0%	\$5,990,900	79.7%	\$332,828	-0.2%	\$164,450	-25.6%	\$222	-20.4%	116	36	16	15		90.2%
Single Family	1	0.0%	\$168,900	-22.8%	\$168,900	-22.8%	\$168,900	-22.8%	\$87	-46.6%	322	-	16	1	10.7	91.3%
YTD:	18	80.0%	\$5,990,900	79.7%	\$332,828	-0.2%	\$164,450	-25.6%	\$222	-20.4%	116	36	16	15		90.2%
Townhouse	-	0.0%	-	0.0%	-	0.0%	-	0.0%	-	0.0%	-	-	-	-	-	0.0%
YTD:	-	0.0%	-	0.0%	-	0.0%	-	0.0%	-	0.0%	-	-	-	-	-	0.0%
Condominium	-	0.0%	-	0.0%	-	0.0%	-	0.0%	-	0.0%	-	-	-	-	-	0.0%
YTD:	-	0.0%	-	0.0%	-	0.0%	-	0.0%	-	0.0%	-	-	-	-	-	0.0%
Existing Home																
Residential (SF/COND/TH)	1	0.0%	\$168,900	-22.8%	\$168,900	-22.8%	\$168,900	-22.8%	\$87	-46.6%	322	-	15	1	11.3	91.3%
YTD:	16	77.8%	\$4,410,900	81.2%	\$275,681	2.0%	\$157,500	-28.0%	\$196	-21.8%	111	33	15	13		91.0%
Single Family	1	0.0%	\$168,900	-22.8%	\$168,900	-22.8%	\$168,900	-22.8%	\$87	-46.6%	322	-	15	1	11.3	91.3%
YTD:	16	77.8%	\$4,410,900	81.2%	\$275,681	2.0%	\$157,500	-28.0%	\$196	-21.8%	111	33	15	13		91.0%
Townhouse	-	0.0%	-	0.0%	-	0.0%	-	0.0%	-	0.0%	-	-	-	-	-	0.0%
YTD:	-	0.0%	-	0.0%	-	0.0%	-	0.0%	-	0.0%	-	-	-	-	-	0.0%
Condominium	-	0.0%	-	0.0%	-	0.0%	-	0.0%	-	0.0%	-	-	-	-	-	0.0%
YTD:	-	0.0%	-	0.0%	-	0.0%	-	0.0%	-	0.0%	-	-	-	-	-	0.0%
New Construction																
Residential (SF/COND/TH)	-	0.0%	-	0.0%	-	0.0%	-	0.0%	-	0.0%	-	-	1	-	6.0	0.0%
YTD:	2	100.0%	\$1,580,000	75.6%	\$790,000	-12.2%	\$790,000	-12.2%	\$431	-19.1%	157	3	1	2		87.0%
Single Family	-	0.0%	-	0.0%	-	0.0%	-	0.0%	-	0.0%	-	-	1	-	6.0	0.0%
YTD:	2	100.0%	\$1,580,000	75.6%	\$790,000	-12.2%	\$790,000	-12.2%	\$431	-19.1%	157	3	1	2		87.0%
Townhouse	-	0.0%	-	0.0%	-	0.0%	-	0.0%	-	0.0%	-	-	-	-	-	0.0%
YTD:	-	0.0%	-	0.0%	-	0.0%	-	0.0%	-	0.0%	-	-	-	-	-	0.0%
Condominium	-	0.0%	-	0.0%	-	0.0%	-	0.0%	-	0.0%	-	-	-	-	-	0.0%
YTD:	-	0.0%	-	0.0%	-	0.0%	-	0.0%	-	0.0%	-	-	-	-	-	0.0%

* Closed Sale counts for most recent 3 months are Preliminary.

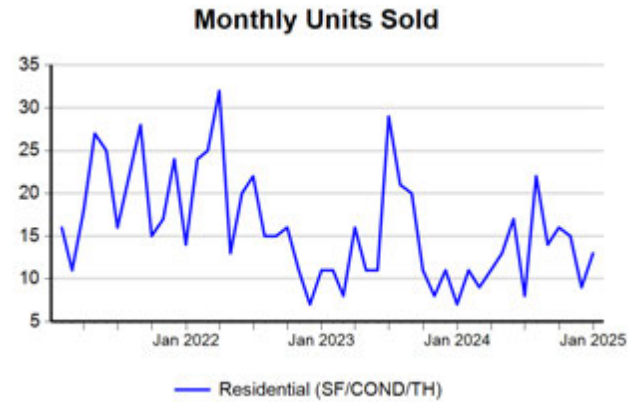
Market Analysis By County: Mason County

Property Type	Closed Sales*	YoY%	Dollar Volume	YoY%	Average Price	YoY%	Median Price	YoY%	Price/Sqft	YoY%	DOM	New Listings	Active Listings	Pending Sales	Months Inventory	Close To OLP
All(New and Existing)																
Residential (SF/COND/TH)	3	50.0%	\$708,000	59.1%	\$236,000	6.1%	\$200,000	-10.1%	\$184	-1.9%	87	2	30	-	17.1	88.6%
YTD:	21	-34.4%	\$6,655,500	-34.2%	\$316,929	0.3%	\$270,000	8.0%	\$227	12.5%	144	57	27	11		90.7%
Single Family	3	50.0%	\$708,000	59.1%	\$236,000	6.1%	\$200,000	-10.1%	\$184	-1.9%	87	2	30	-	17.1	88.6%
YTD:	21	-34.4%	\$6,655,500	-34.2%	\$316,929	0.3%	\$270,000	8.0%	\$227	12.5%	144	57	27	11		90.7%
Townhouse	-	0.0%	-	0.0%	-	0.0%	-	0.0%	-	0.0%	-	-	-	-	-	0.0%
YTD:	-	0.0%	-	0.0%	-	0.0%	-	0.0%	-	0.0%	-	-	-	-	-	0.0%
Condominium	-	0.0%	-	0.0%	-	0.0%	-	0.0%	-	0.0%	-	-	-	-	-	0.0%
YTD:	-	0.0%	-	0.0%	-	0.0%	-	0.0%	-	0.0%	-	-	-	-	-	0.0%
Existing Home																
Residential (SF/COND/TH)	3	50.0%	\$708,000	59.1%	\$236,000	6.1%	\$200,000	-10.1%	\$184	-1.9%	87	2	26	-	15.6	88.6%
YTD:	20	-37.5%	\$6,292,500	-37.8%	\$314,625	-0.4%	\$257,250	2.9%	\$228	12.7%	151	52	25	10		90.3%
Single Family	3	50.0%	\$708,000	59.1%	\$236,000	6.1%	\$200,000	-10.1%	\$184	-1.9%	87	2	26	-	15.6	88.6%
YTD:	20	-37.5%	\$6,292,500	-37.8%	\$314,625	-0.4%	\$257,250	2.9%	\$228	12.7%	151	52	25	10		90.3%
Townhouse	-	0.0%	-	0.0%	-	0.0%	-	0.0%	-	0.0%	-	-	-	-	-	0.0%
YTD:	-	0.0%	-	0.0%	-	0.0%	-	0.0%	-	0.0%	-	-	-	-	-	0.0%
Condominium	-	0.0%	-	0.0%	-	0.0%	-	0.0%	-	0.0%	-	-	-	-	-	0.0%
YTD:	-	0.0%	-	0.0%	-	0.0%	-	0.0%	-	0.0%	-	-	-	-	-	0.0%
New Construction																
Residential (SF/COND/TH)	-	0.0%	-	0.0%	-	0.0%	-	0.0%	-	0.0%	-	-	4	-	48.0	0.0%
YTD:	1	100.0%	\$363,000	100.0%	\$363,000	100.0%	\$363,000	100.0%	\$216	100.0%	8	5	3	1		99.5%
Single Family	-	0.0%	-	0.0%	-	0.0%	-	0.0%	-	0.0%	-	-	4	-	48.0	0.0%
YTD:	1	100.0%	\$363,000	100.0%	\$363,000	100.0%	\$363,000	100.0%	\$216	100.0%	8	5	3	1		99.5%
Townhouse	-	0.0%	-	0.0%	-	0.0%	-	0.0%	-	0.0%	-	-	-	-	-	0.0%
YTD:	-	0.0%	-	0.0%	-	0.0%	-	0.0%	-	0.0%	-	-	-	-	-	0.0%
Condominium	-	0.0%	-	0.0%	-	0.0%	-	0.0%	-	0.0%	-	-	-	-	-	0.0%
YTD:	-	0.0%	-	0.0%	-	0.0%	-	0.0%	-	0.0%	-	-	-	-	-	0.0%

* Closed Sale counts for most recent 3 months are Preliminary.

Trend Analysis By County: Blanco County

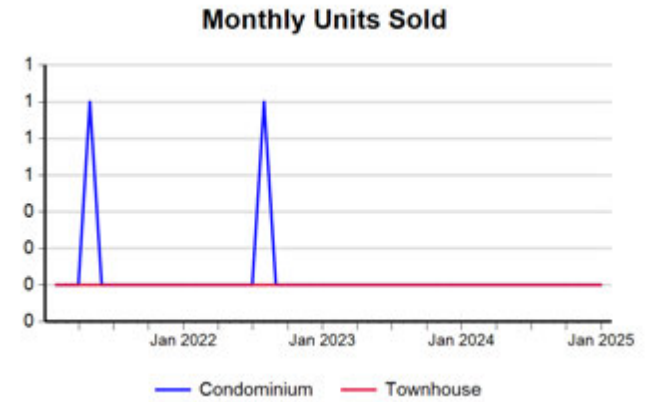
Residential, All (New and Existing)



Single Family, New vs. Existing



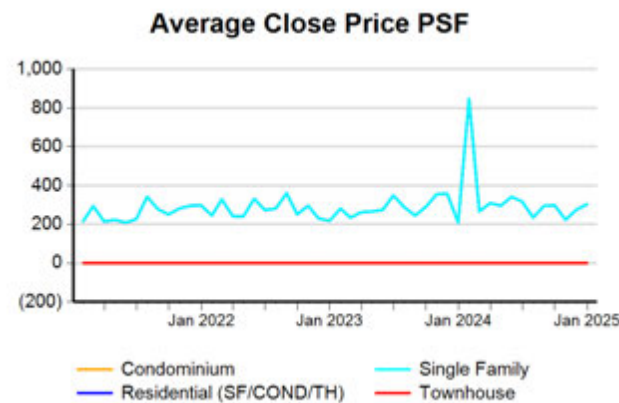
COND/TH, All (New and Existing)



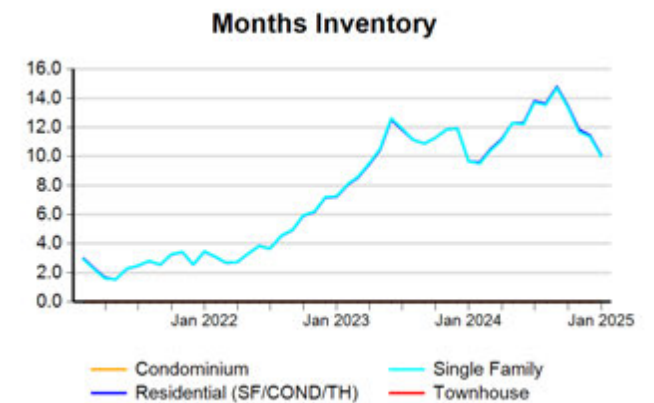
All (New and Existing) Construction



All (New and Existing) Construction



All (New and Existing) Construction



* Closed Sale counts for most recent 3 months are Preliminary.

Trend Analysis By County: Gillespie County

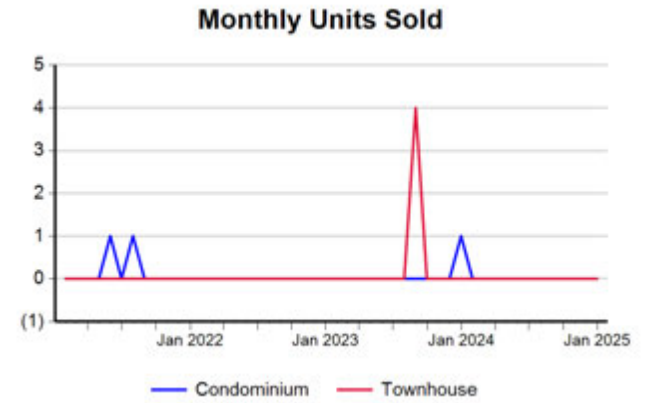
Residential, All (New and Existing)



Single Family, New vs. Existing



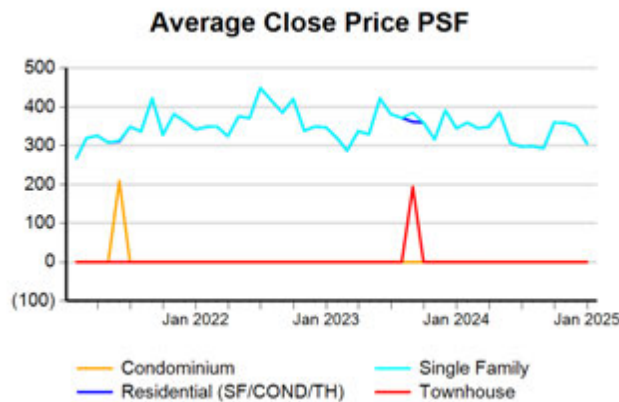
COND/TH, All (New and Existing)



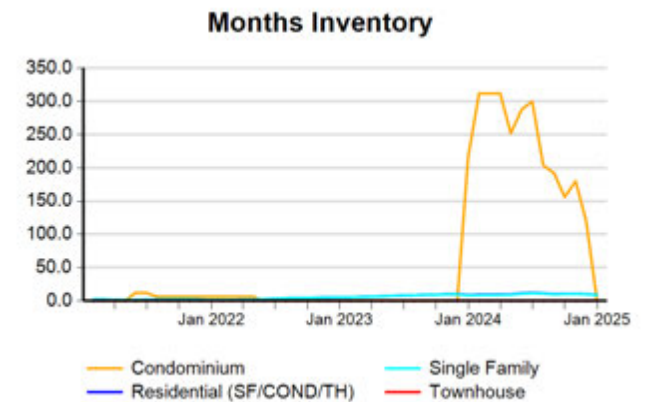
All (New and Existing) Construction



All (New and Existing) Construction



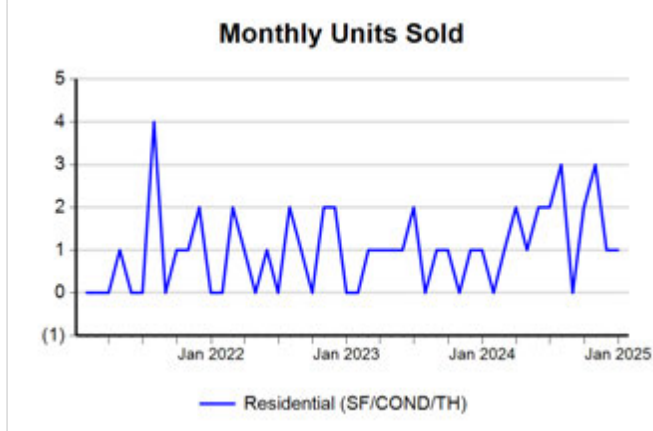
All (New and Existing) Construction



* Closed Sale counts for most recent 3 months are Preliminary.

Trend Analysis By County: Kimble County

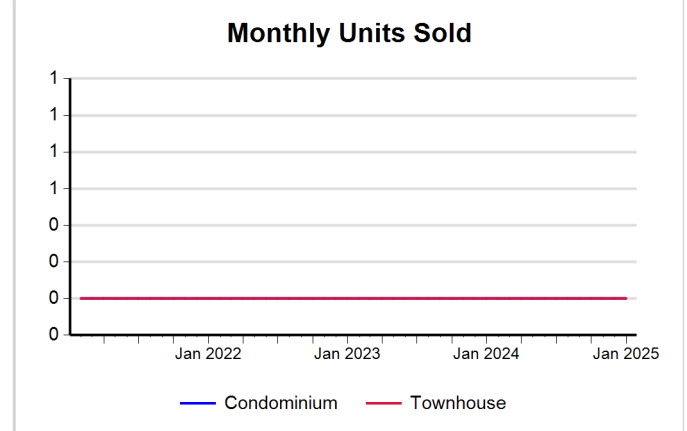
Residential, All (New and Existing)



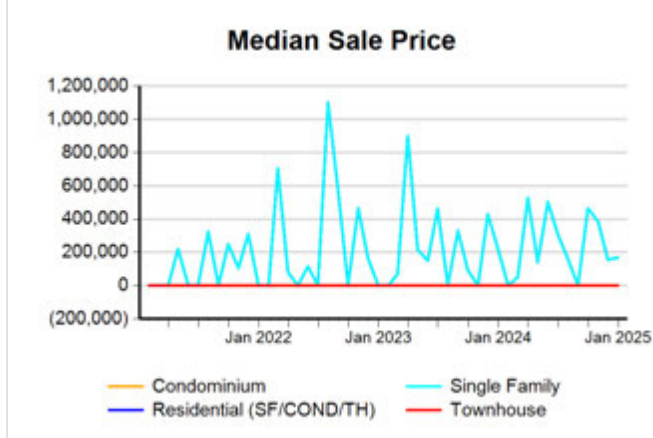
Single Family, New vs. Existing



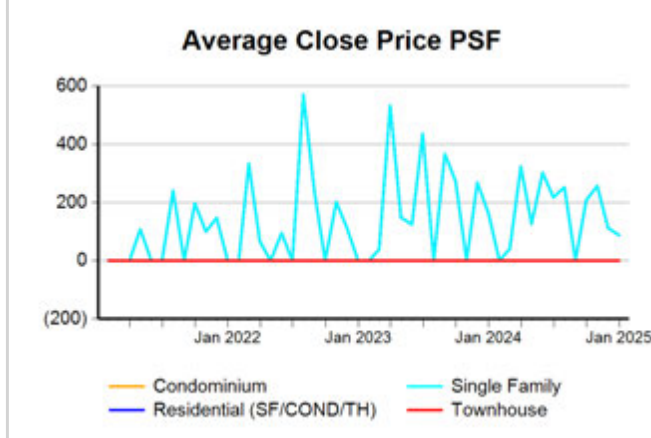
COND/TH, All (New and Existing)



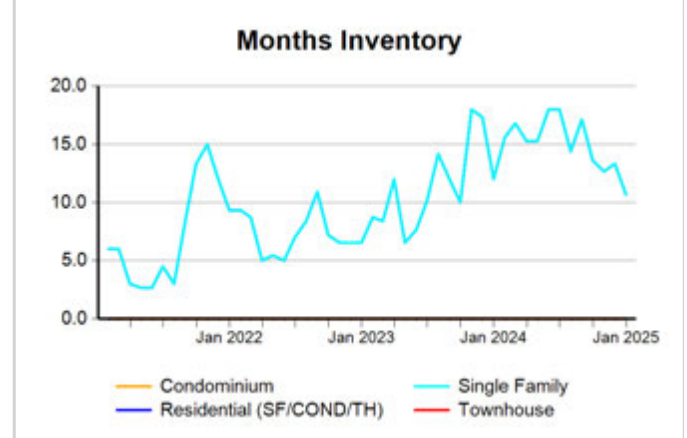
All (New and Existing) Construction



All (New and Existing) Construction



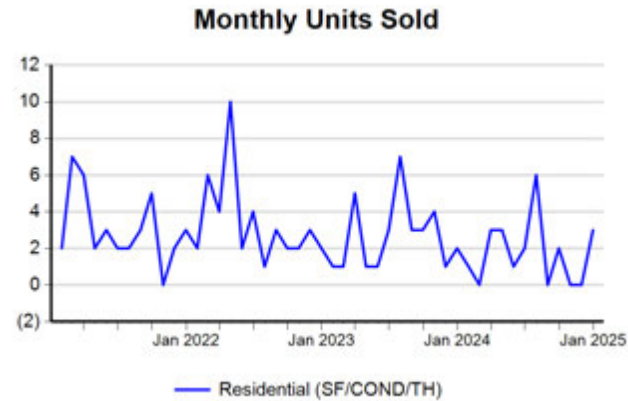
All (New and Existing) Construction



* Closed Sale counts for most recent 3 months are Preliminary.

Trend Analysis By County: Mason County

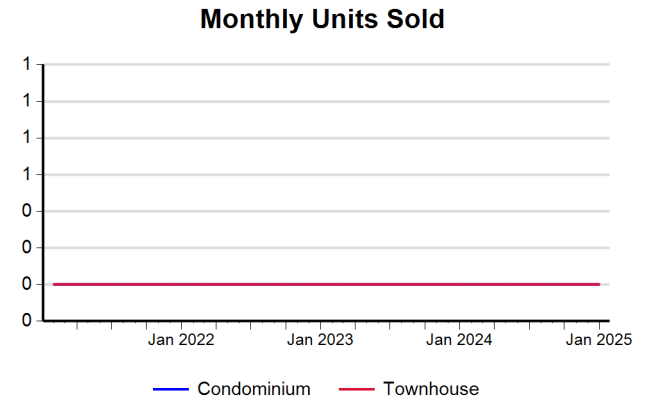
Residential, All (New and Existing)



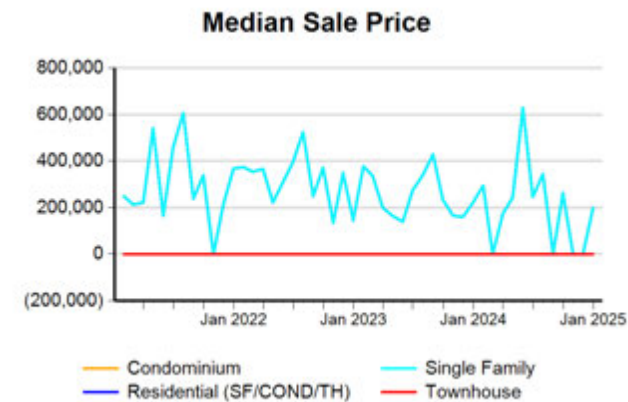
Single Family, New vs. Existing



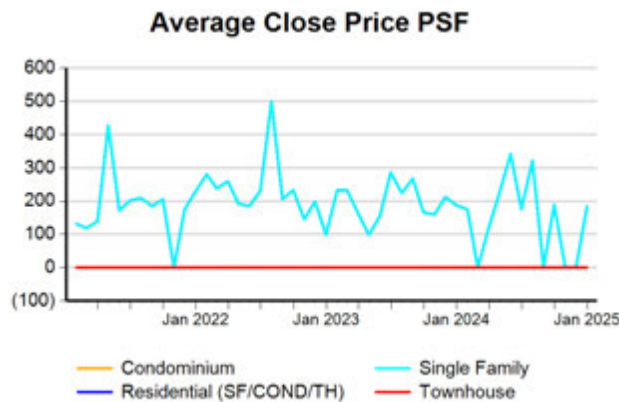
COND/TH, All (New and Existing)



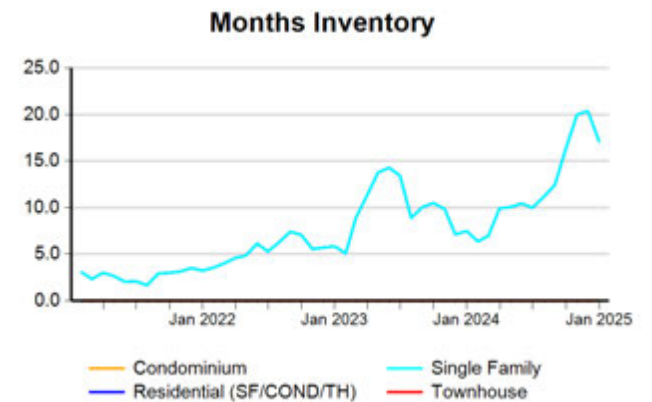
All (New and Existing) Construction



All (New and Existing) Construction



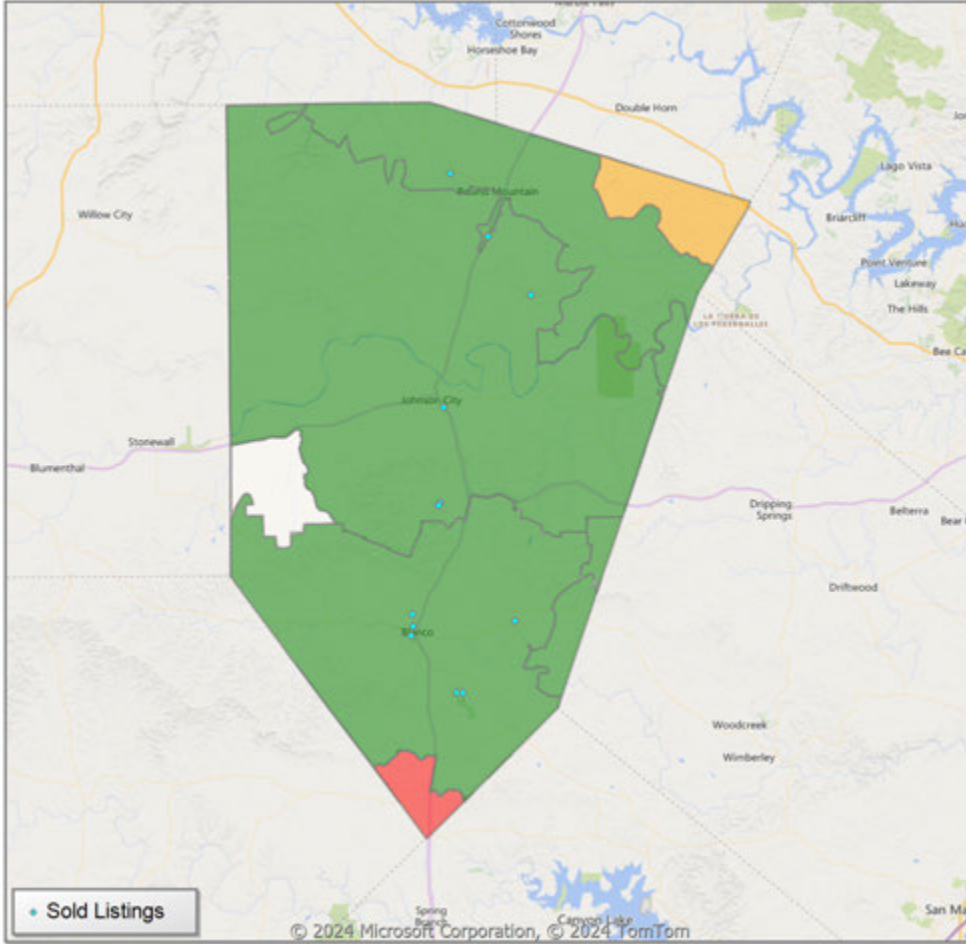
All (New and Existing) Construction



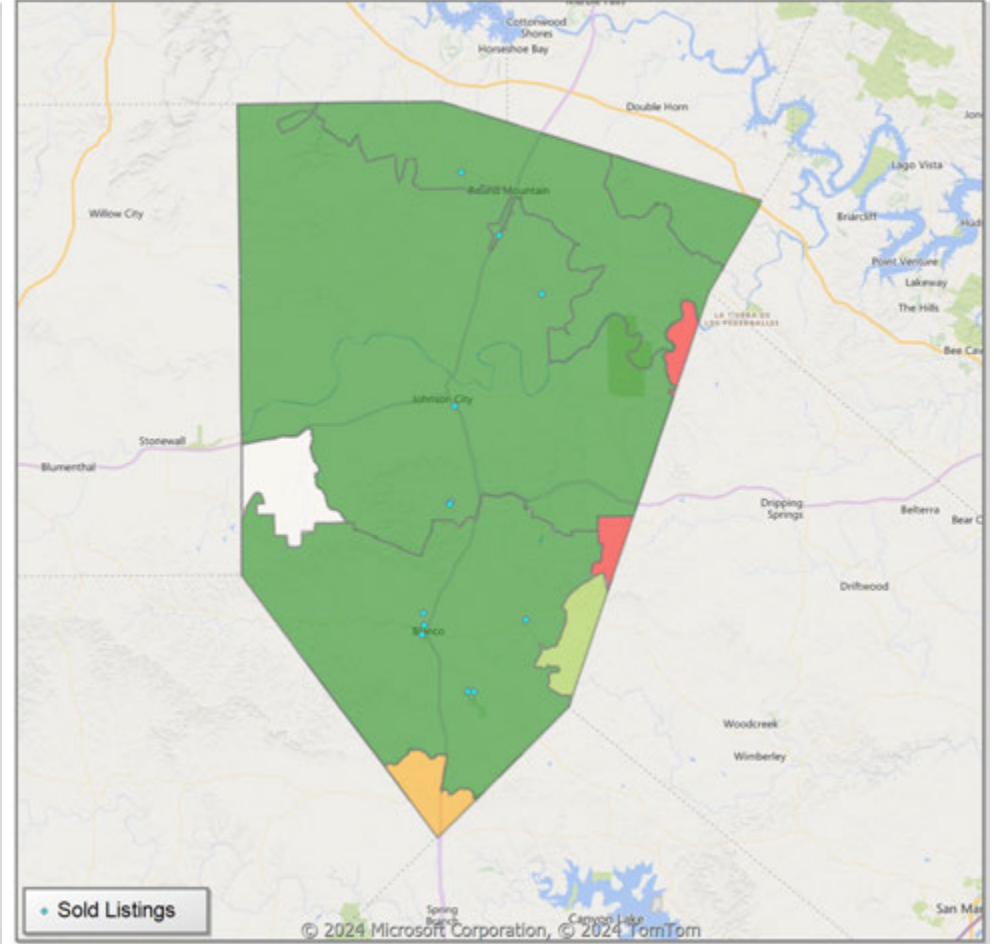
* Closed Sale counts for most recent 3 months are Preliminary.

Comparison By Zip Code* in Blanco County

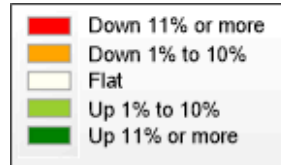
Residential Closed Sales
YoY Percentage Change**



Residential Avg Close Price Per SqFt
YoY Percentage Change**

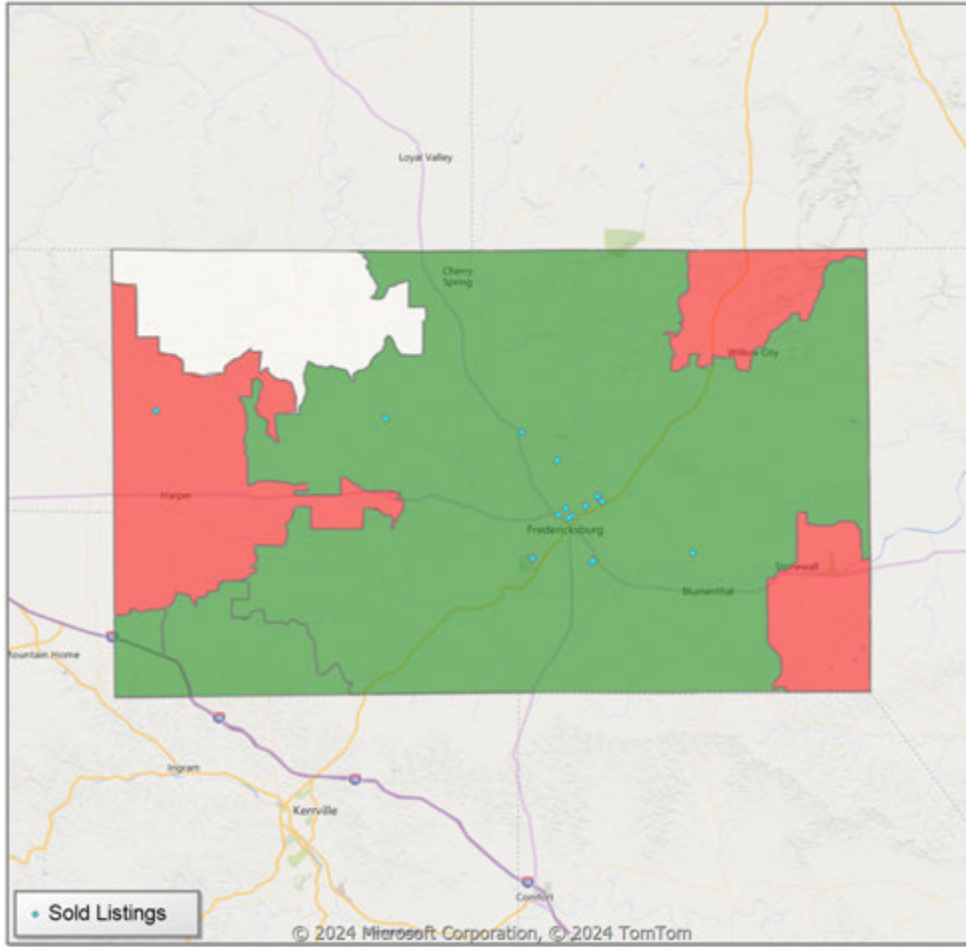


* US Census Zip Code Tabulation Area
** Residential includes Single Family, Condominium and Townhouse.

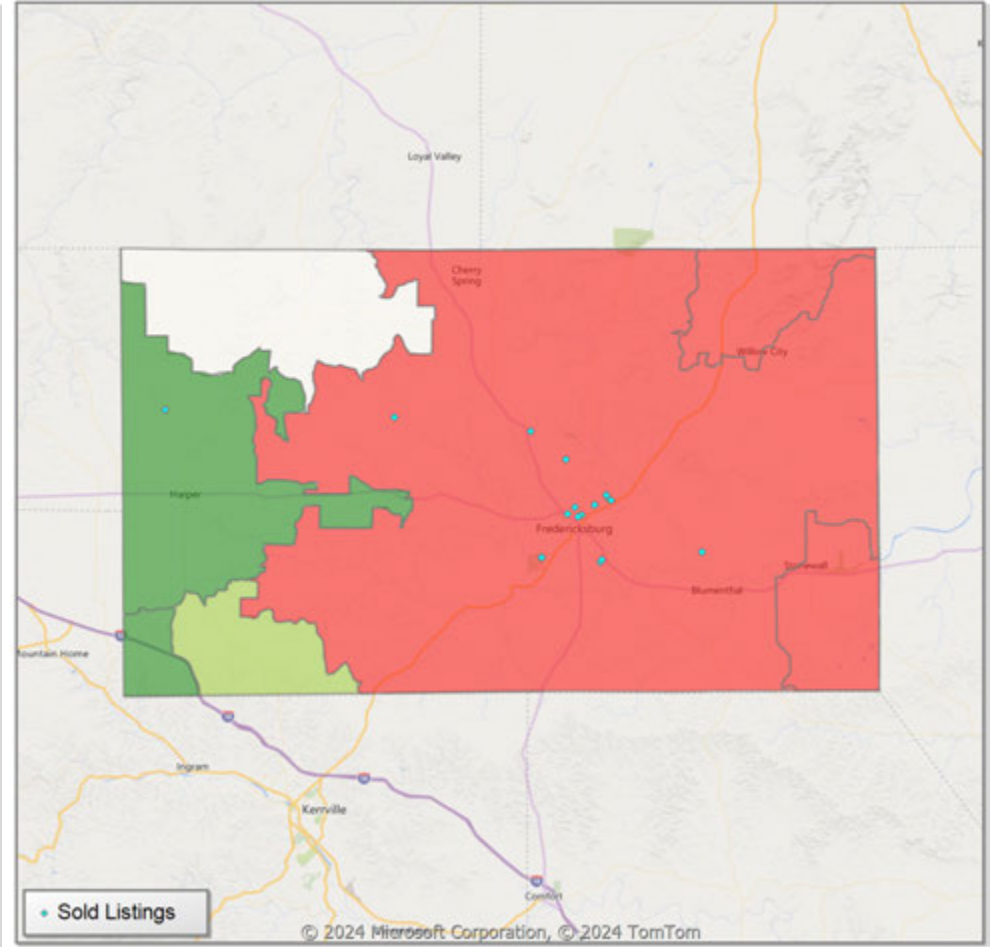


Comparison By Zip Code* in Gillespie County

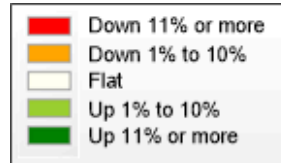
Residential Closed Sales
YoY Percentage Change**



Residential Avg Close Price Per SqFt
YoY Percentage Change**

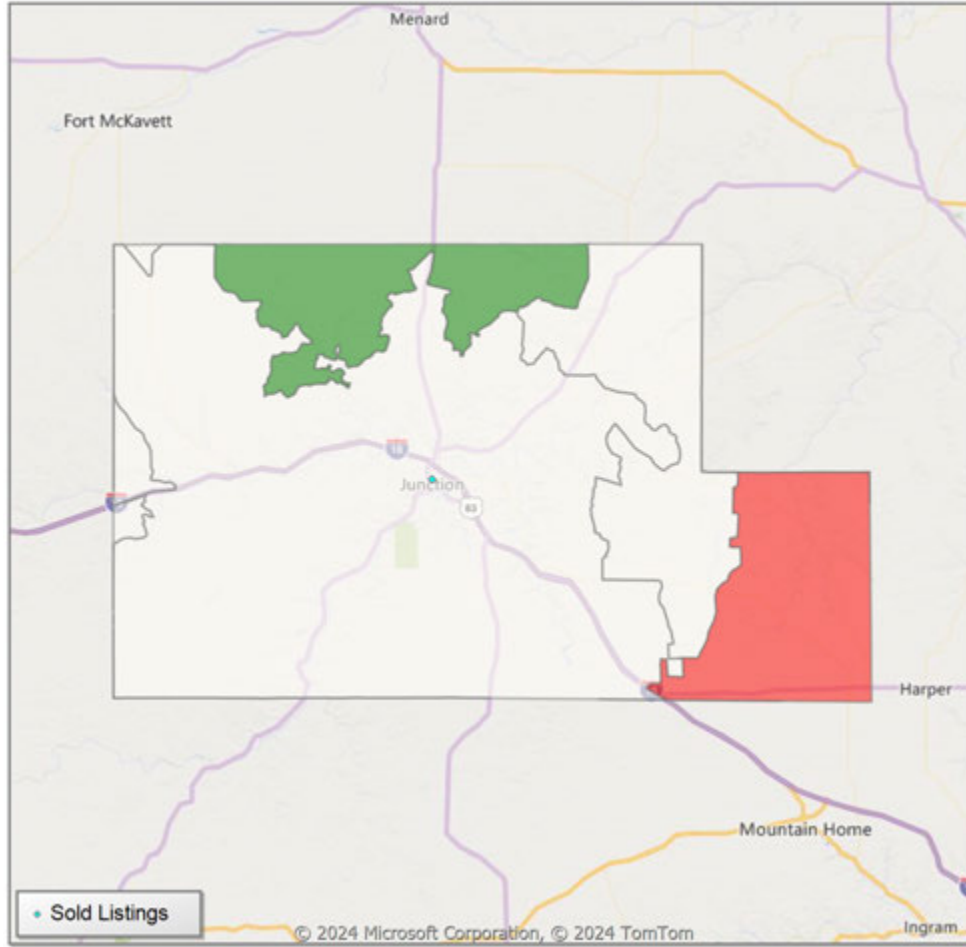


* US Census Zip Code Tabulation Area
** Residential includes Single Family, Condominium and Townhouse.

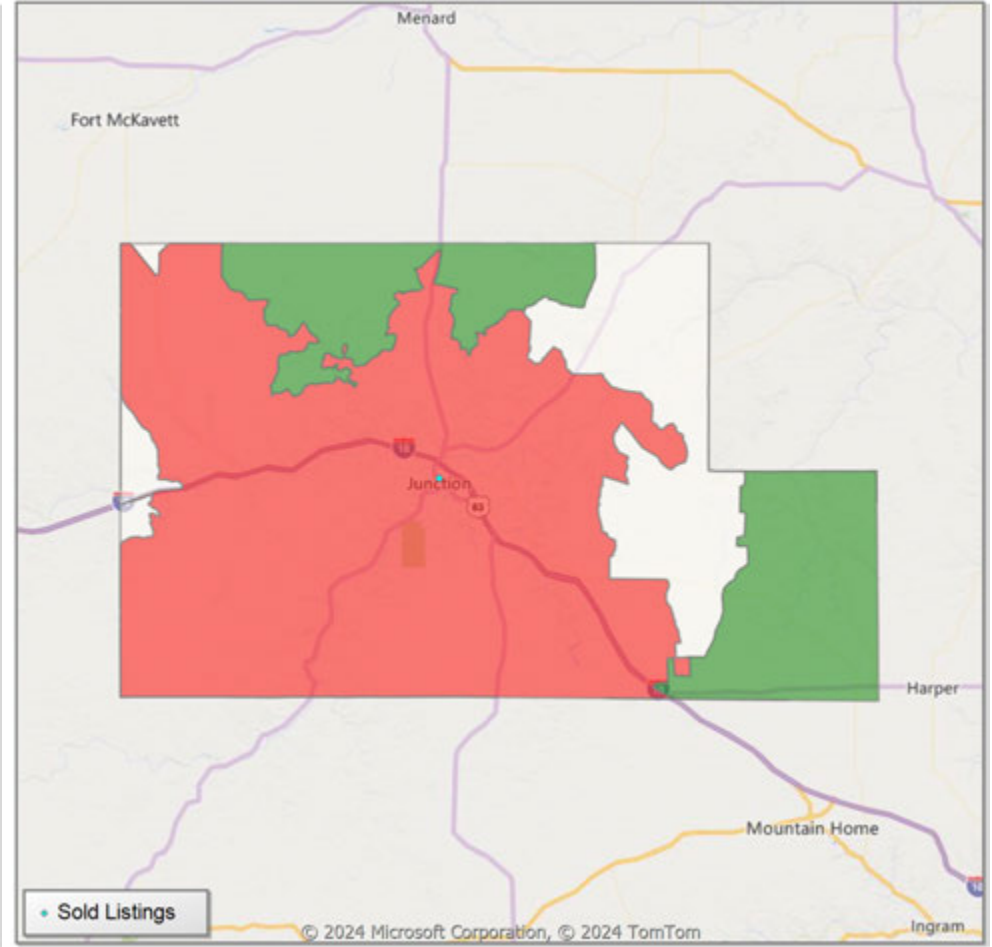


Comparison By Zip Code* in Kimble County

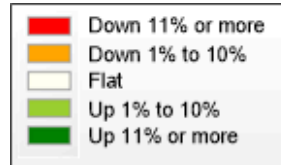
Residential Closed Sales
YoY Percentage Change**



Residential Avg Close Price Per SqFt
YoY Percentage Change**

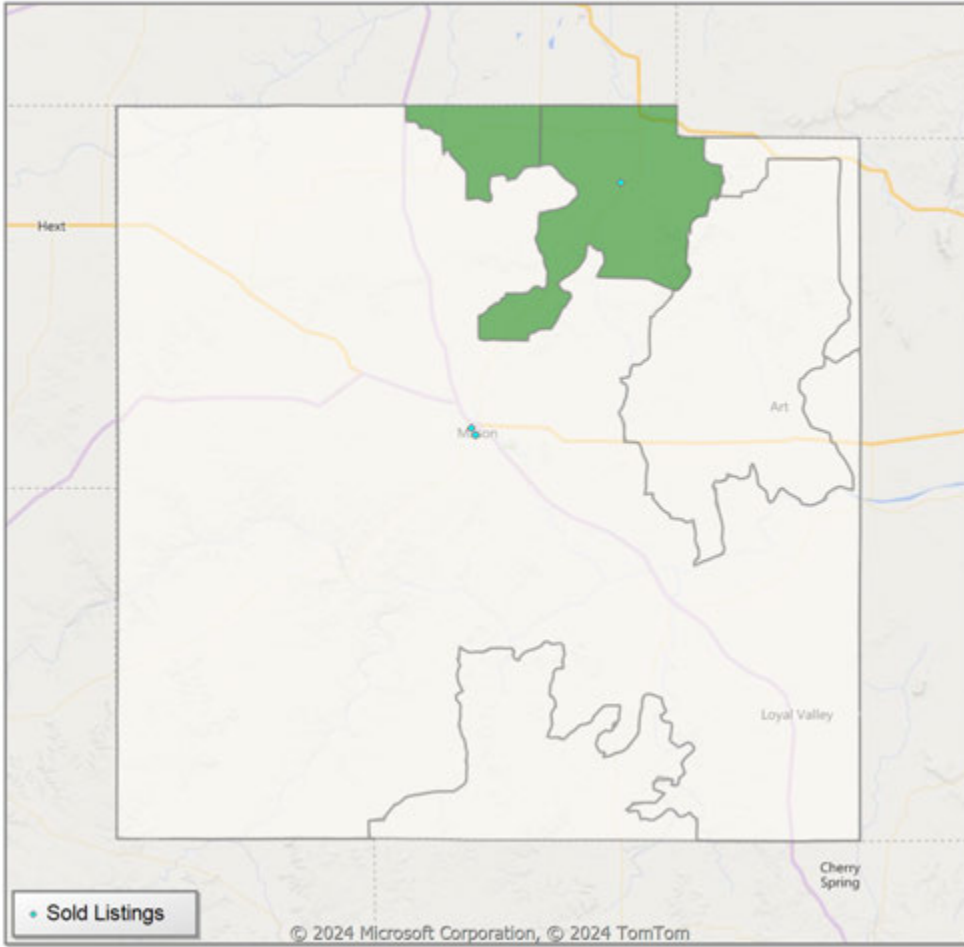


* US Census Zip Code Tabulation Area
** Residential includes Single Family, Condominium and Townhouse.

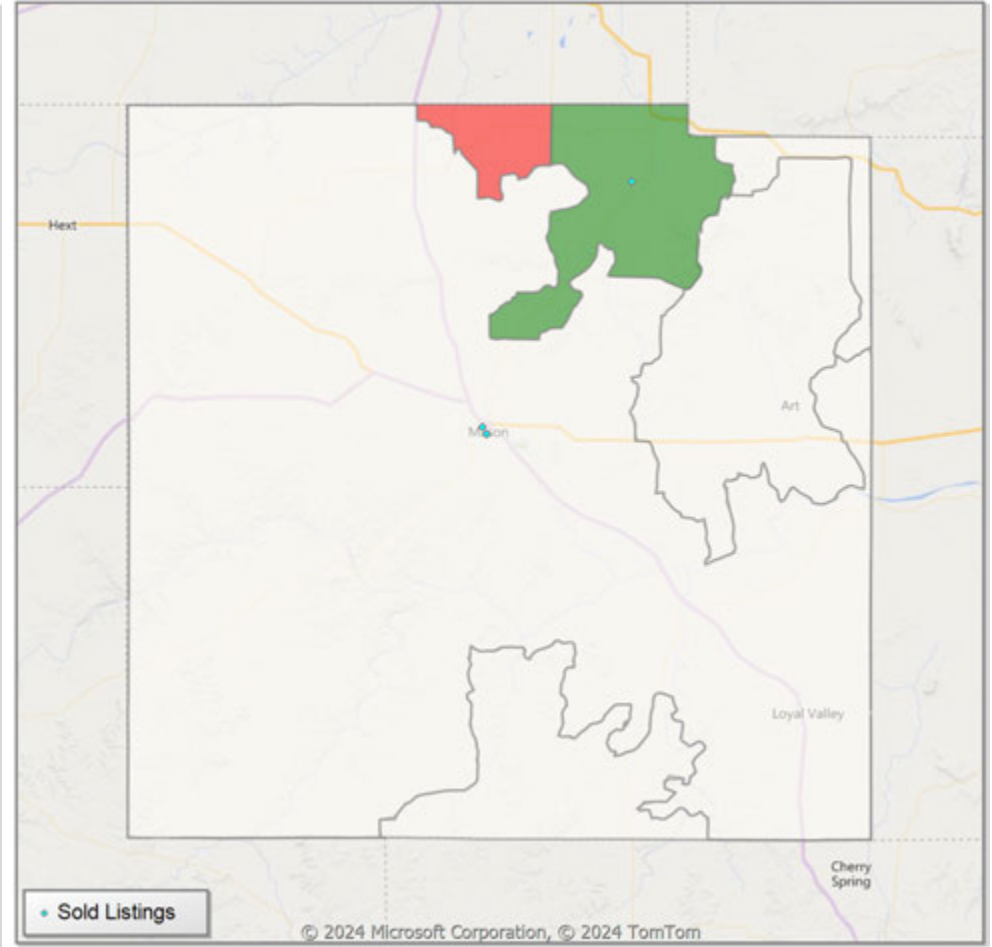


Comparison By Zip Code* in Mason County

Residential Closed Sales
YoY Percentage Change**

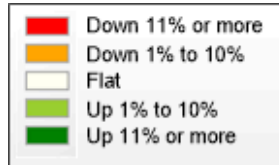


Residential Avg Close Price Per SqFt
YoY Percentage Change**



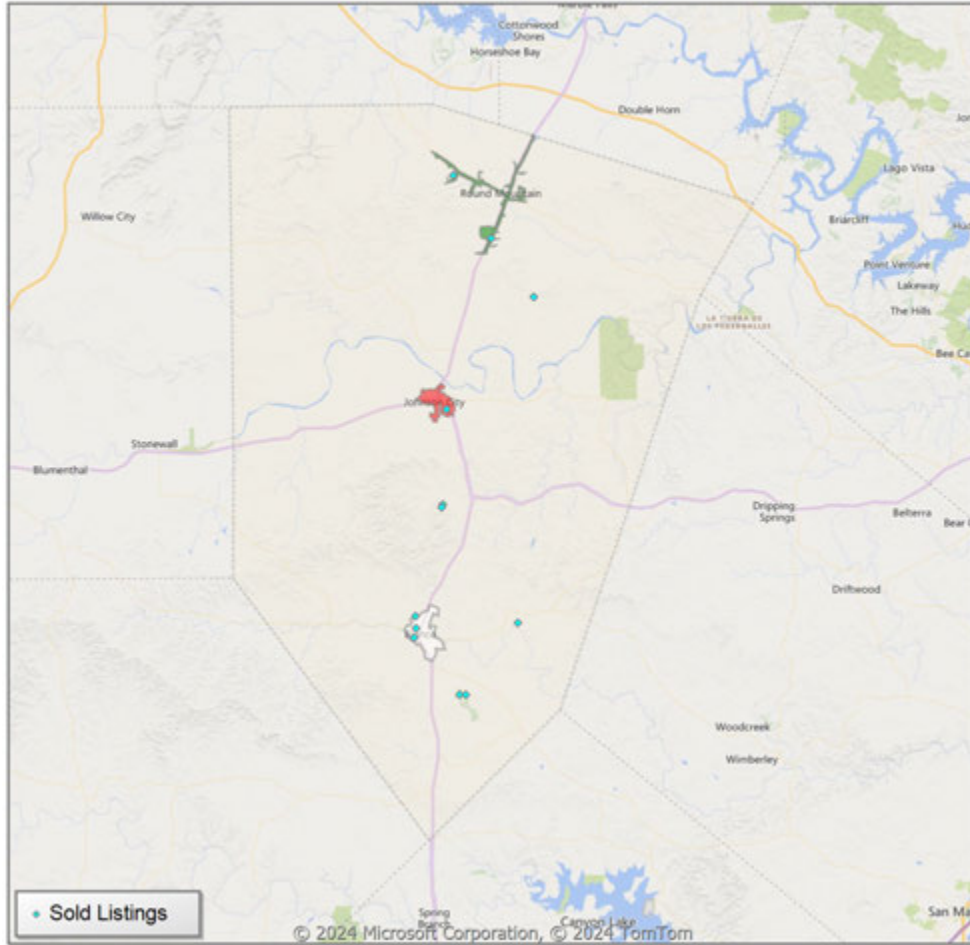
* US Census Zip Code Tabulation Area

** Residential includes Single Family, Condominium and Townhouse.

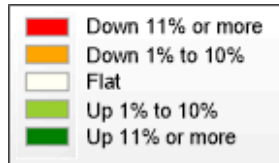
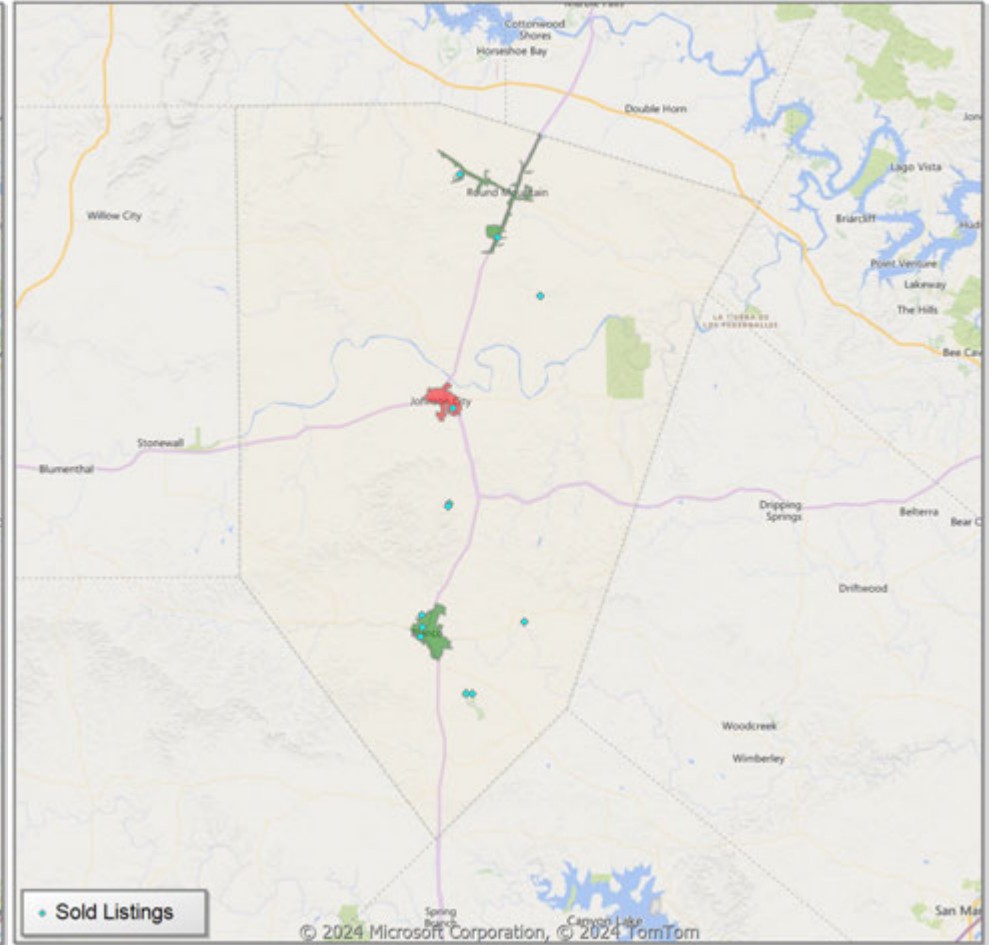


Comparison By Local Market Area* in Blanco County

Residential Closed Sales
YoY Percentage Change**



Residential Avg Close Price Per SqFt
YoY Percentage Change**

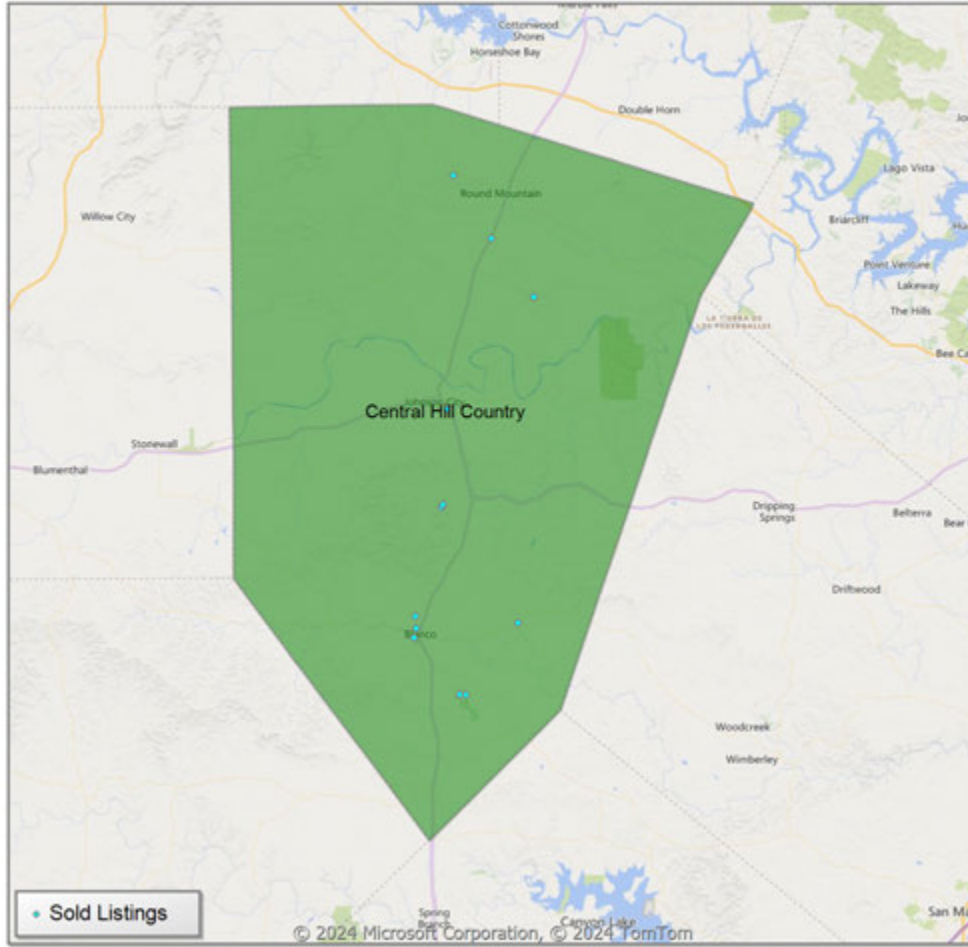


* Census Place Group

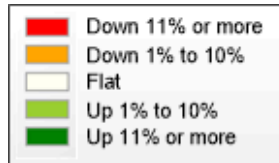
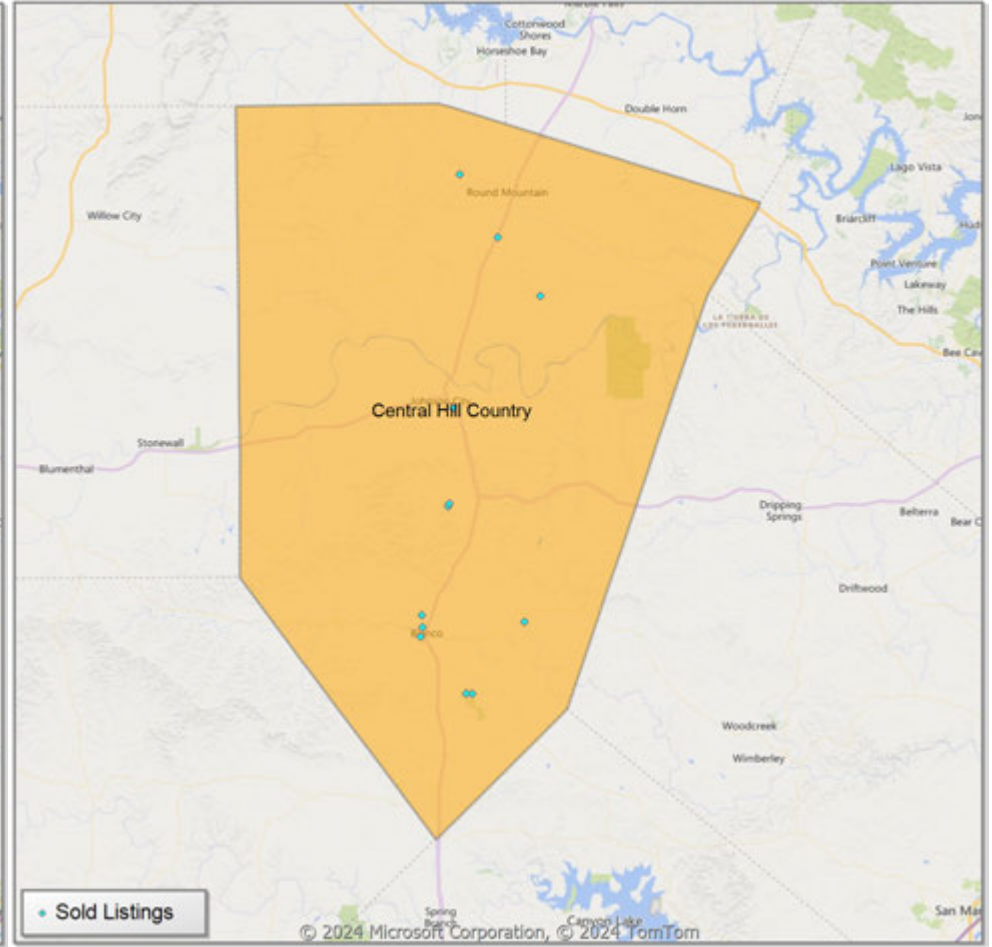
** Residential includes Single Family, Condominium and Townhouse.

Comparison By Local Market Area* in Blanco County

Residential Closed Sales
YoY Percentage Change**



Residential Avg Close Price Per SqFt
YoY Percentage Change**

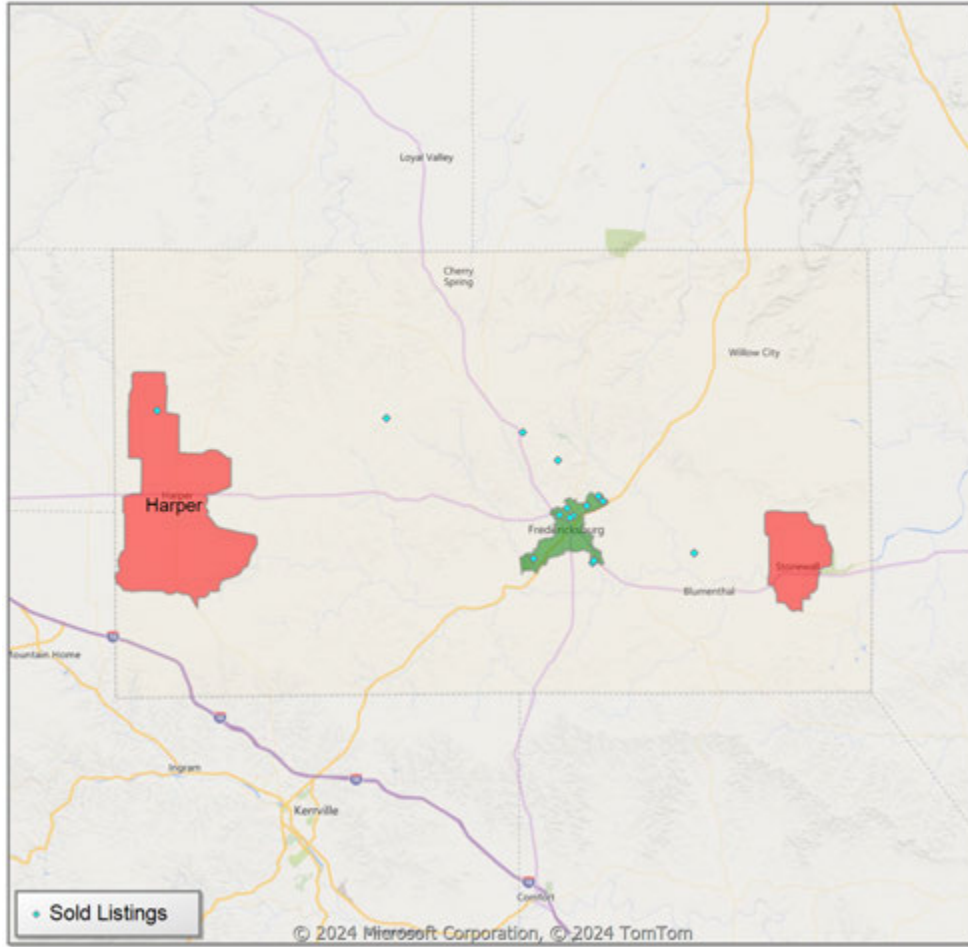


* Custom Defined Market

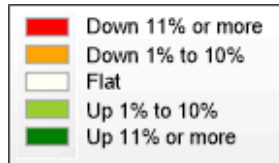
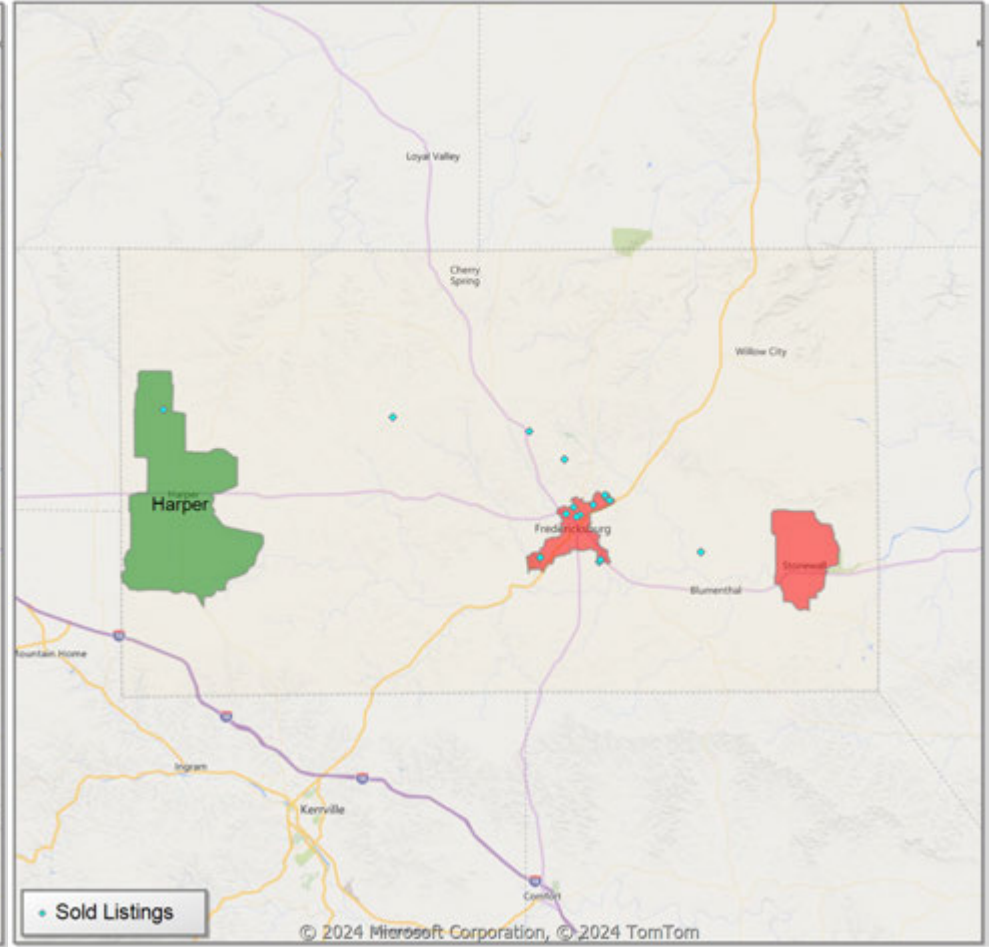
** Residential includes Single Family, Condominium and Townhouse.

Comparison By Local Market Area* in Gillespie County

Residential Closed Sales
YoY Percentage Change**



Residential Avg Close Price Per SqFt
YoY Percentage Change**

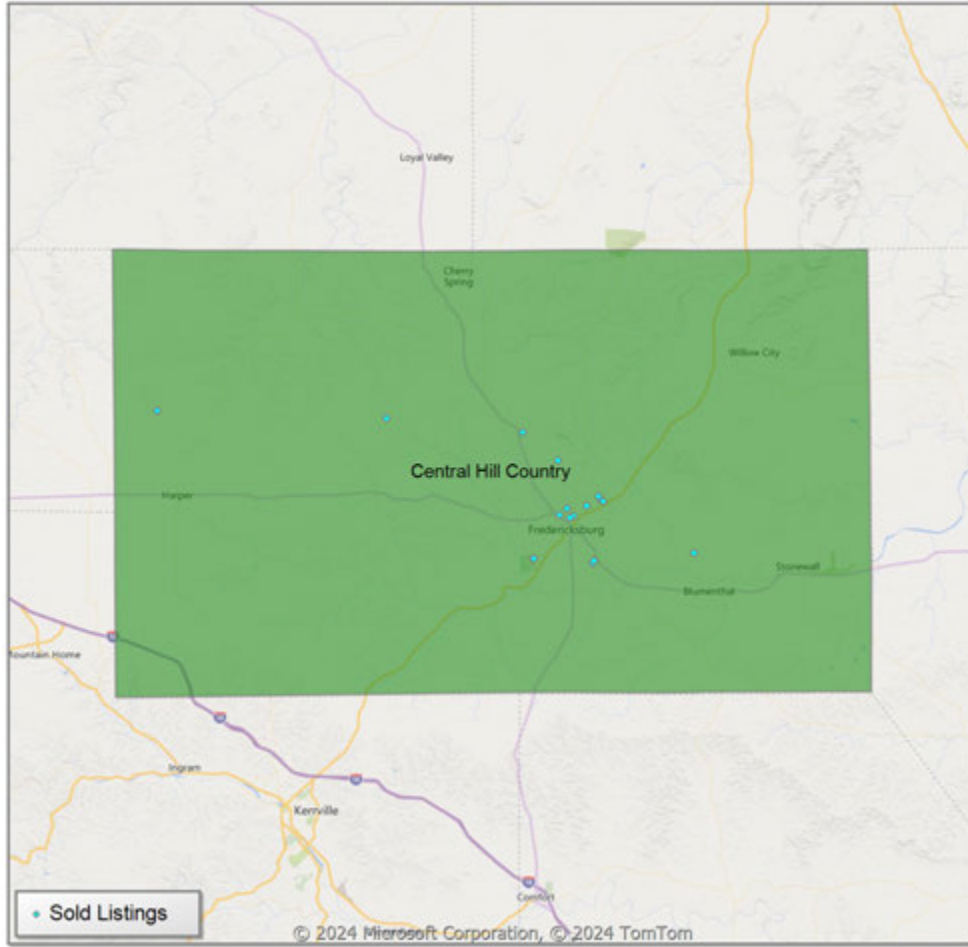


* Census Place Group

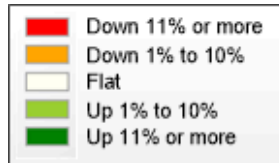
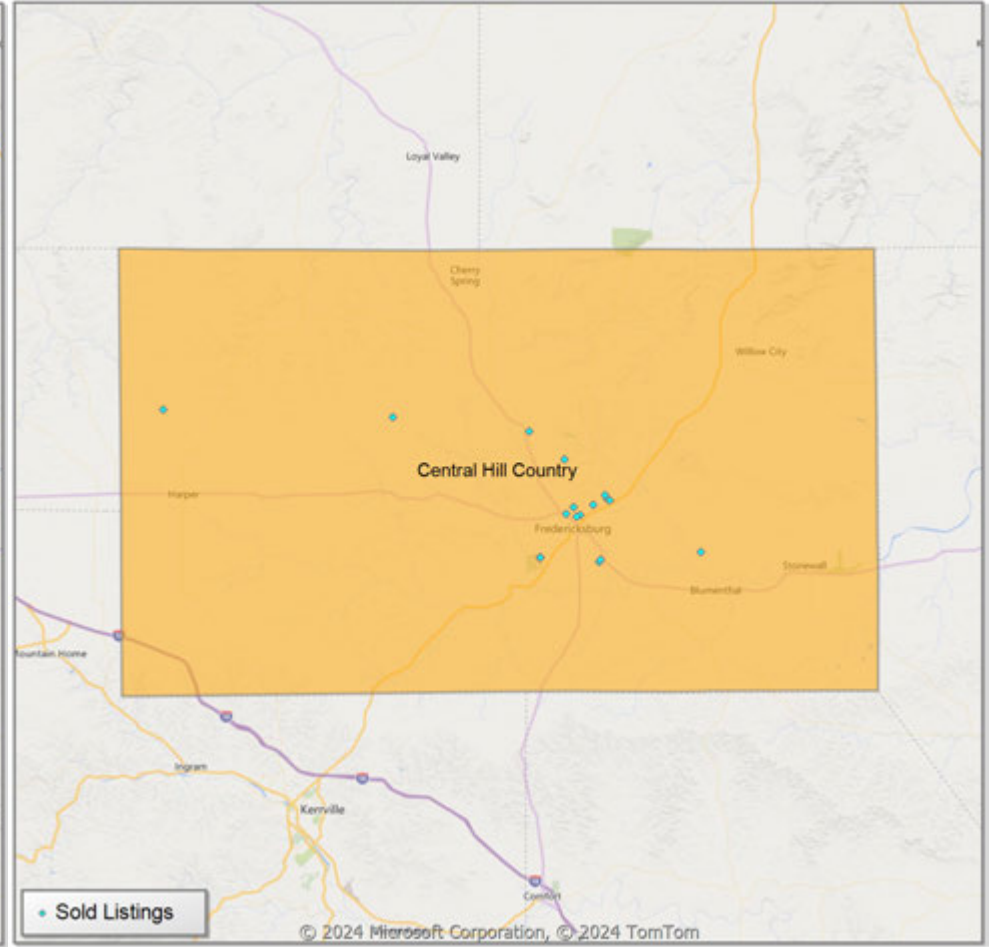
** Residential includes Single Family, Condominium and Townhouse.

Comparison By Local Market Area* in Gillespie County

Residential Closed Sales
YoY Percentage Change**



Residential Avg Close Price Per SqFt
YoY Percentage Change**

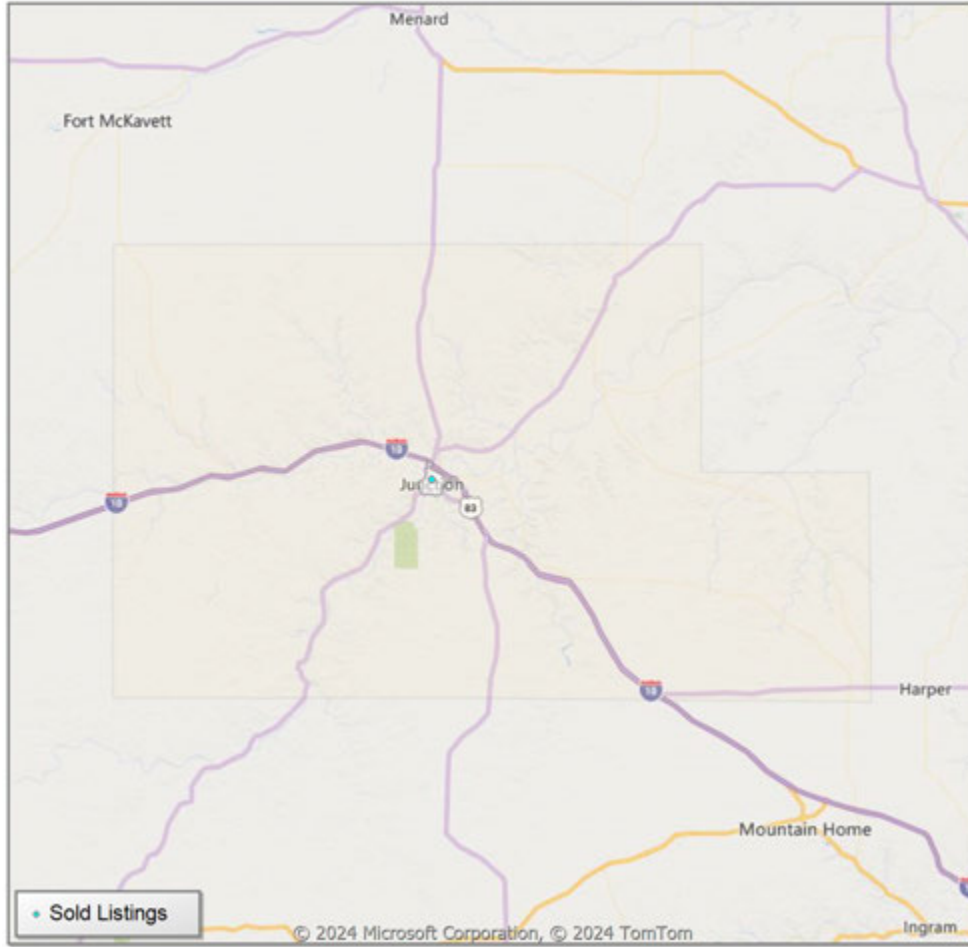


* Custom Defined Market

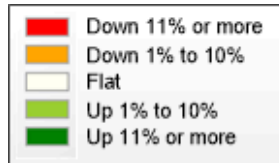
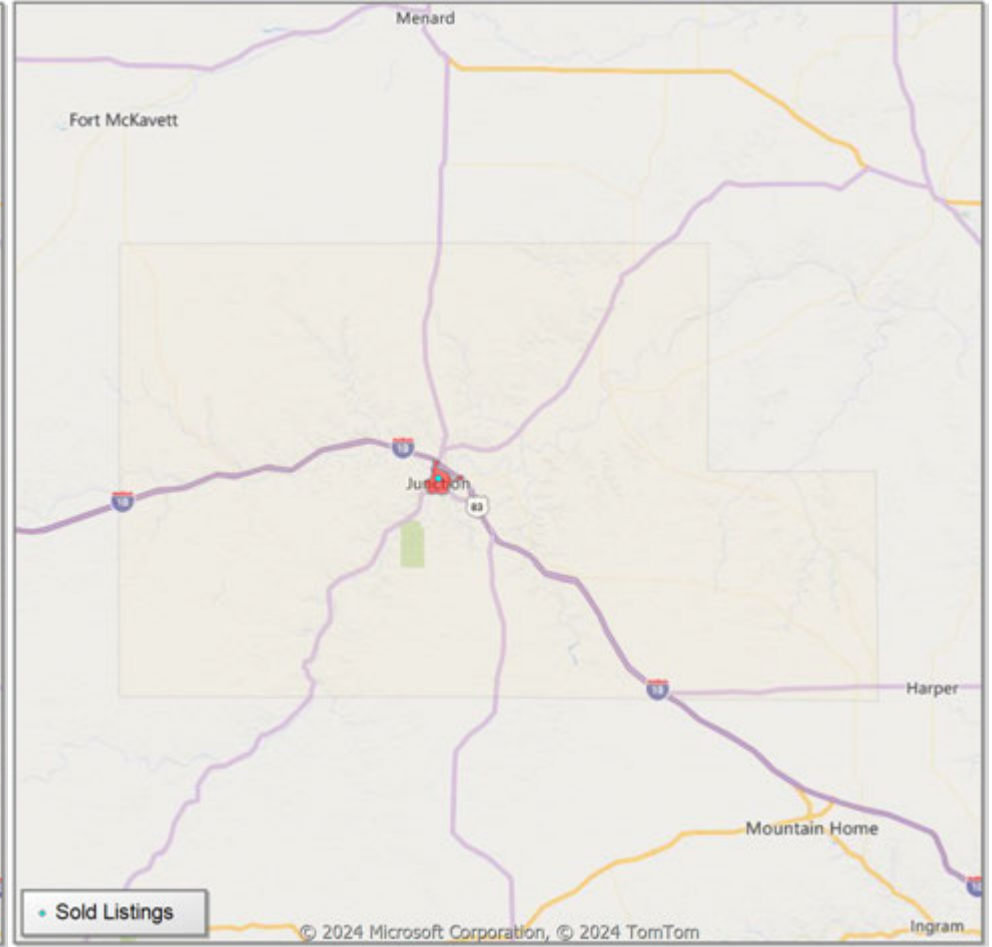
** Residential includes Single Family, Condominium and Townhouse.

Comparison By Local Market Area* in Kimble County

Residential Closed Sales
YoY Percentage Change**



Residential Avg Close Price Per SqFt
YoY Percentage Change**

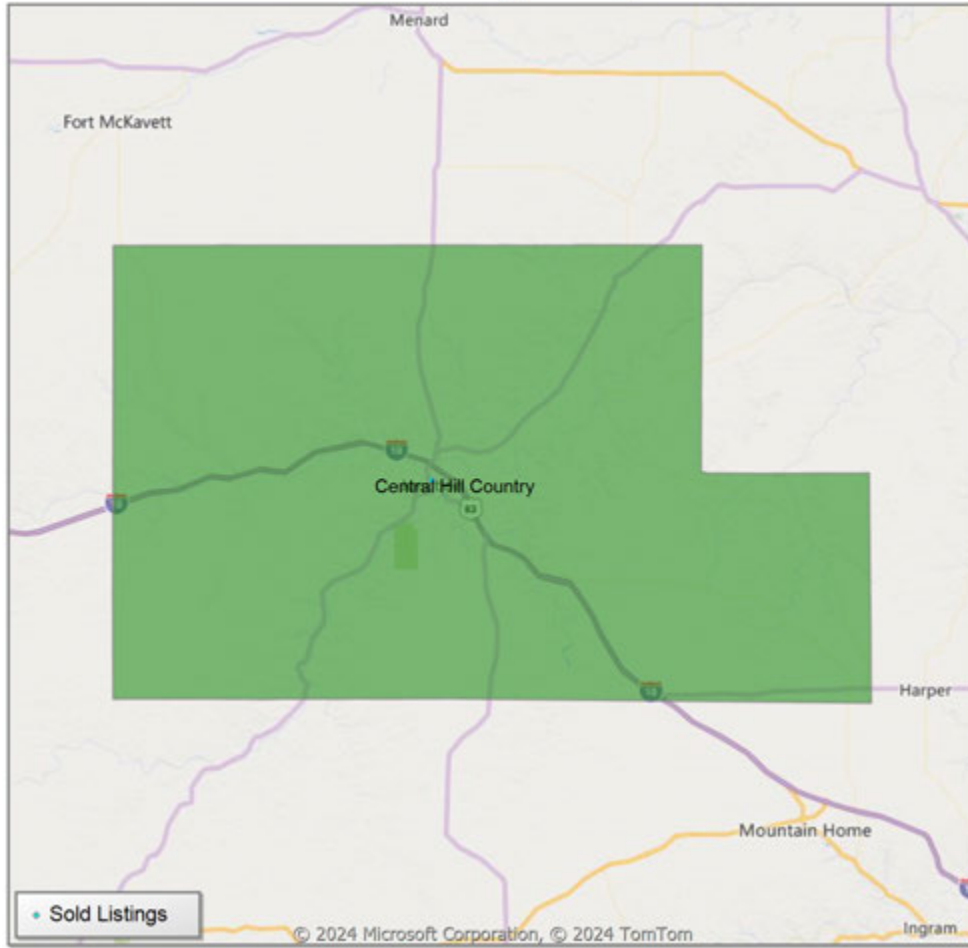


* Census Place Group

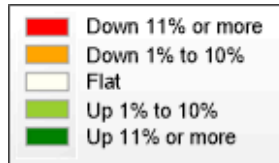
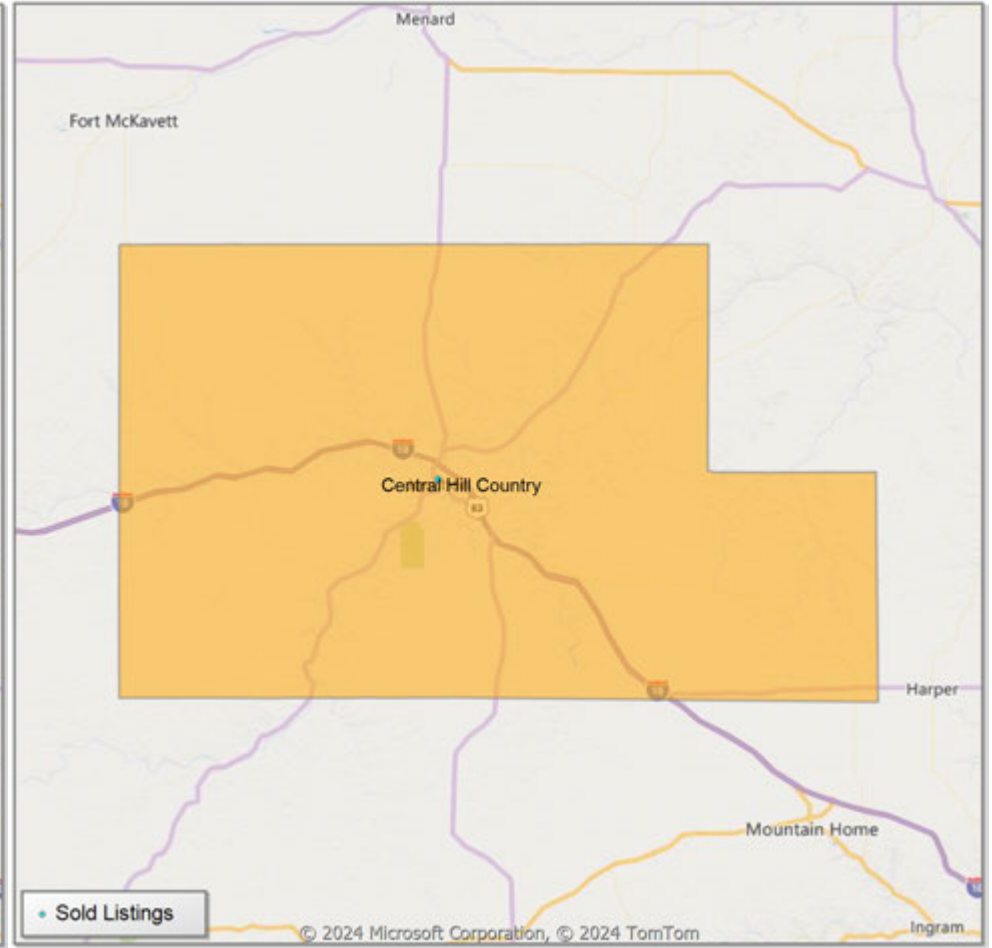
** Residential includes Single Family, Condominium and Townhouse.

Comparison By Local Market Area* in Kimble County

Residential Closed Sales
YoY Percentage Change**



Residential Avg Close Price Per SqFt
YoY Percentage Change**

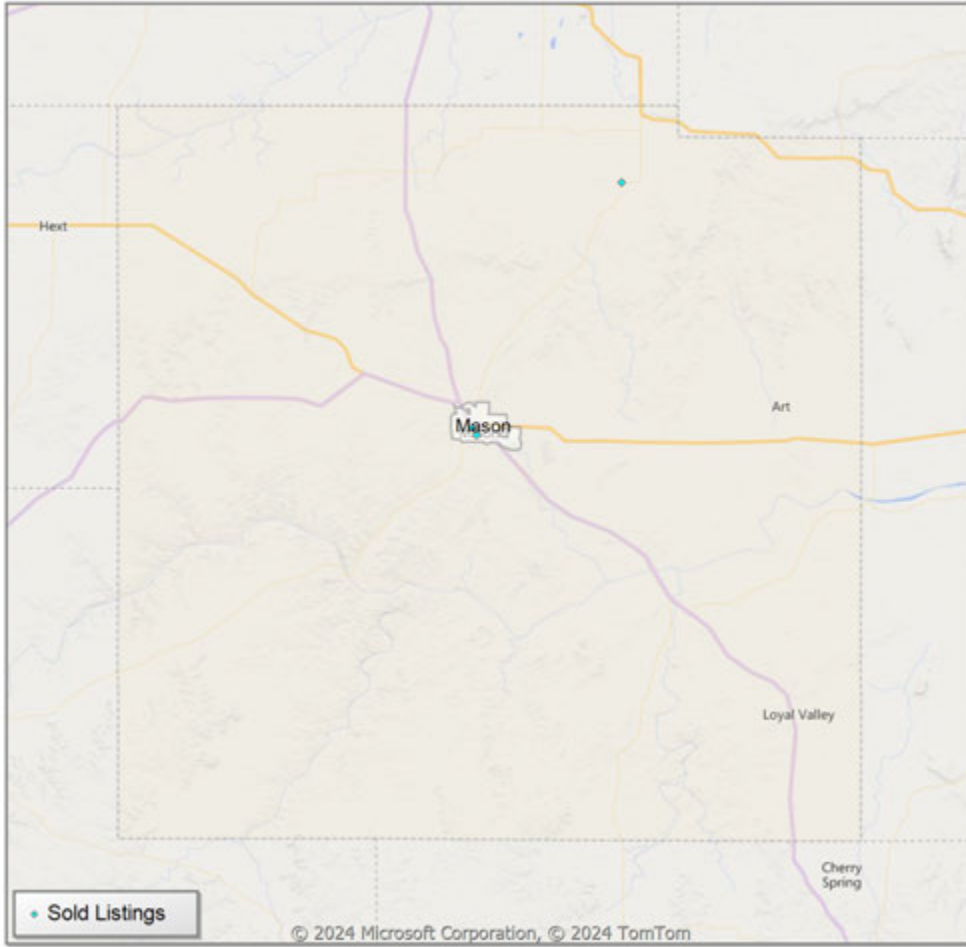


* Custom Defined Market

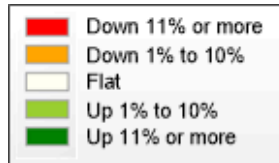
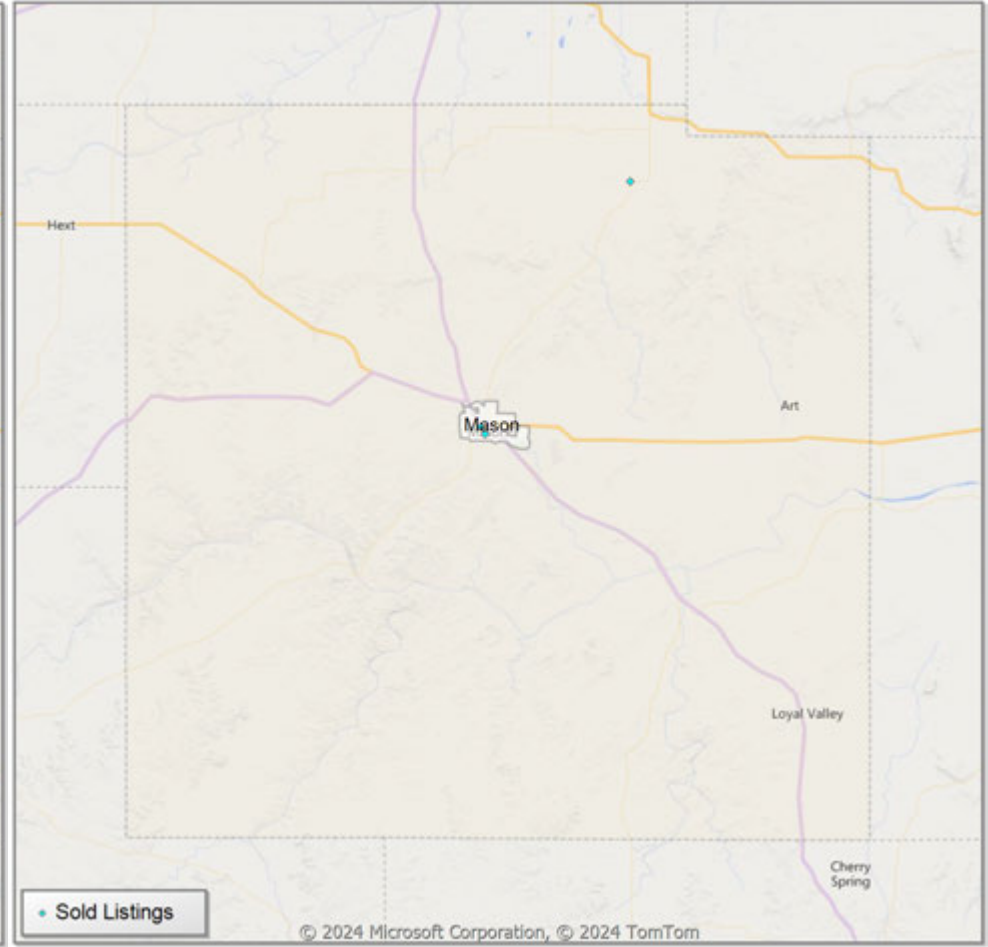
** Residential includes Single Family, Condominium and Townhouse.

Comparison By Local Market Area* in Mason County

Residential Closed Sales
YoY Percentage Change**



Residential Avg Close Price Per SqFt
YoY Percentage Change**

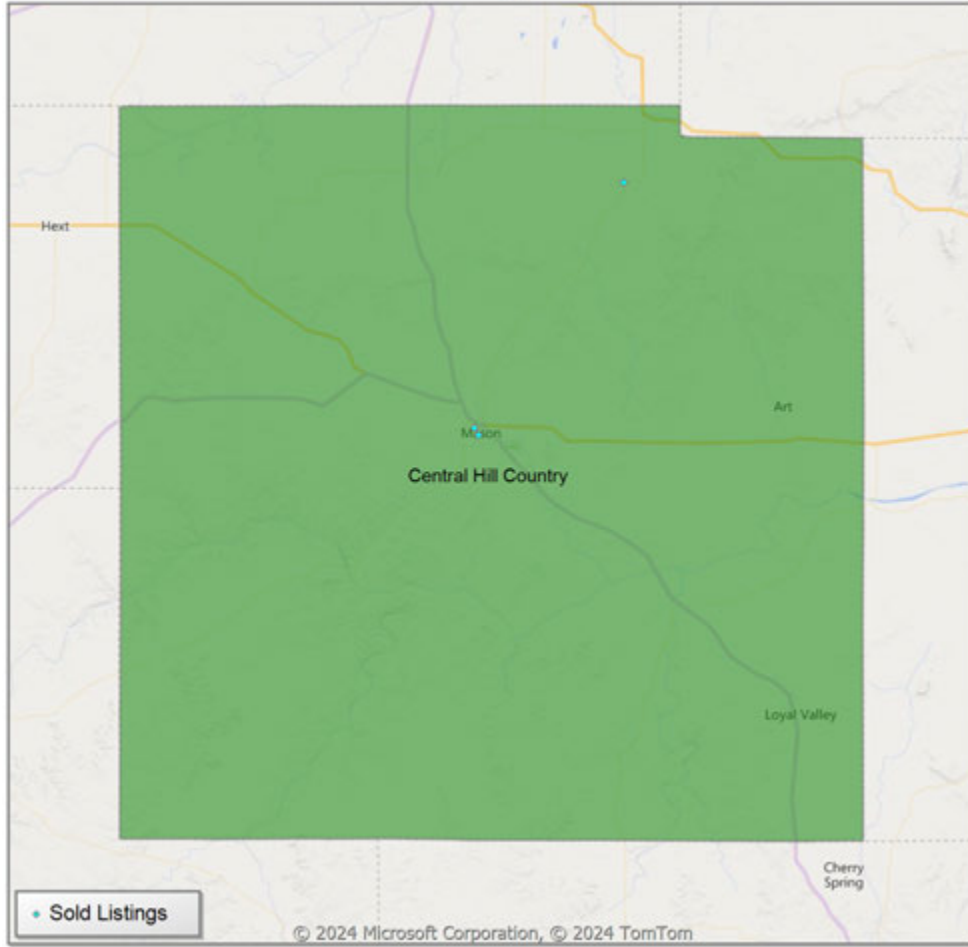


* Census Place Group

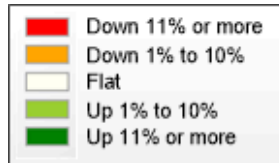
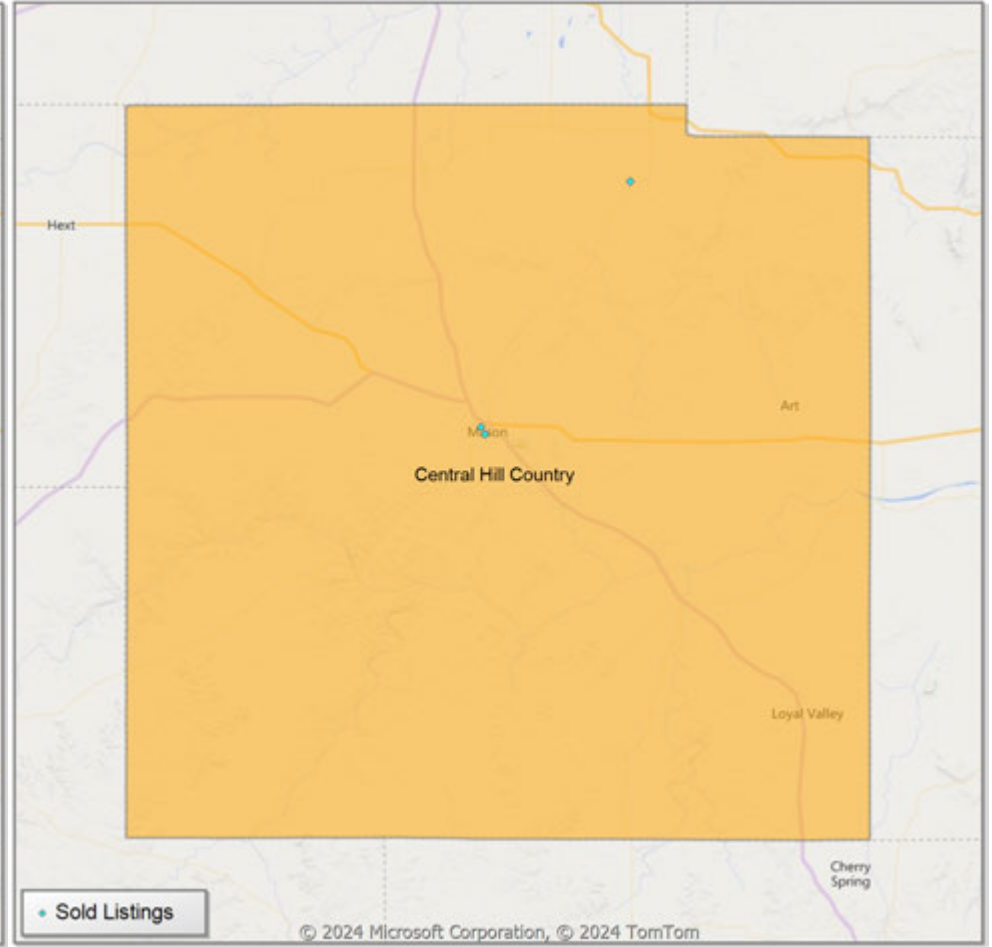
** Residential includes Single Family, Condominium and Townhouse.

Comparison By Local Market Area* in Mason County

Residential Closed Sales
YoY Percentage Change**



Residential Avg Close Price Per SqFt
YoY Percentage Change**



* Custom Defined Market

** Residential includes Single Family, Condominium and Townhouse.

Market Analysis By Local Market Area*: Blanco

Property Type	Closed Sales**	YoY%	Dollar Volume	YoY%	Average Price	YoY%	Median Price	YoY%	Price/Sqft	YoY%	DOM	New Listings	Active Listings	Pending Sales	Months Inventory	Close To OLP
All(New and Existing)																
Residential (SF/COND/TH)	3	0.0%	\$953,000	18.7%	\$317,667	18.7%	\$340,000	23.6%	\$230	27.1%	104	1	11	1	7.3	100.6%
YTD:	18	-10.0%	\$5,947,700	-17.5%	\$330,428	-8.3%	\$354,500	-5.5%	\$226	1.3%	106	36	17	16		92.8%
Single Family	3	0.0%	\$953,000	18.7%	\$317,667	18.7%	\$340,000	23.6%	\$230	27.1%	104	1	11	1	7.3	100.6%
YTD:	18	-10.0%	\$5,947,700	-17.5%	\$330,428	-8.3%	\$354,500	-5.5%	\$226	1.3%	106	35	16	16		92.8%
Townhouse	-	0.0%	-	0.0%	-	0.0%	-	0.0%	-	0.0%	-	-	-	-	-	0.0%
YTD:	-	0.0%	-	0.0%	-	0.0%	-	0.0%	-	0.0%	-	-	-	-	-	0.0%
Condominium	-	0.0%	-	0.0%	-	0.0%	-	0.0%	-	0.0%	-	-	-	-	-	0.0%
YTD:	-	0.0%	-	0.0%	-	0.0%	-	0.0%	-	0.0%	-	1	1	-	-	0.0%
Existing Home																
Residential (SF/COND/TH)	3	0.0%	\$953,000	18.7%	\$317,667	18.7%	\$340,000	23.6%	\$230	27.1%	104	1	11	1	8.3	100.6%
YTD:	16	-11.1%	\$5,238,700	-18.9%	\$327,419	-8.8%	\$350,000	-7.7%	\$225	3.1%	107	31	15	14		92.9%
Single Family	3	0.0%	\$953,000	18.7%	\$317,667	18.7%	\$340,000	23.6%	\$230	27.1%	104	1	11	1	8.3	100.6%
YTD:	16	-11.1%	\$5,238,700	-18.9%	\$327,419	-8.8%	\$350,000	-7.7%	\$225	3.1%	107	30	15	14		92.9%
Townhouse	-	0.0%	-	0.0%	-	0.0%	-	0.0%	-	0.0%	-	-	-	-	-	0.0%
YTD:	-	0.0%	-	0.0%	-	0.0%	-	0.0%	-	0.0%	-	-	-	-	-	0.0%
Condominium	-	0.0%	-	0.0%	-	0.0%	-	0.0%	-	0.0%	-	-	-	-	-	0.0%
YTD:	-	0.0%	-	0.0%	-	0.0%	-	0.0%	-	0.0%	-	1	1	-	-	0.0%
New Construction																
Residential (SF/COND/TH)	-	0.0%	-	0.0%	-	0.0%	-	0.0%	-	0.0%	-	-	-	-	-	0.0%
YTD:	2	0.0%	\$709,000	-5.5%	\$354,500	-5.5%	\$354,500	-5.5%	\$235	-12.2%	101	5	2	2		91.8%
Single Family	-	0.0%	-	0.0%	-	0.0%	-	0.0%	-	0.0%	-	-	-	-	-	0.0%
YTD:	2	0.0%	\$709,000	-5.5%	\$354,500	-5.5%	\$354,500	-5.5%	\$235	-12.2%	101	5	2	2		91.8%
Townhouse	-	0.0%	-	0.0%	-	0.0%	-	0.0%	-	0.0%	-	-	-	-	-	0.0%
YTD:	-	0.0%	-	0.0%	-	0.0%	-	0.0%	-	0.0%	-	-	-	-	-	0.0%
Condominium	-	0.0%	-	0.0%	-	0.0%	-	0.0%	-	0.0%	-	-	-	-	-	0.0%
YTD:	-	0.0%	-	0.0%	-	0.0%	-	0.0%	-	0.0%	-	-	-	-	-	0.0%

* Local Market Area Code: 91; Type: Census Place Group
 ** Closed Sale counts for most recent 3 months are Preliminary.

Market Analysis By Local Market Area*: Central Hill Country

Property Type	Closed Sales**	YoY%	Dollar Volume	YoY%	Average Price	YoY%	Median Price	YoY%	Price/Sqft	YoY%	DOM	New Listings	Active Listings	Pending Sales	Months Inventory	Close To OLP
All(New and Existing)																
Residential (SF/COND/TH)	48	23.1%	\$31,821,195	73.3%	\$662,942	40.8%	\$455,000	3.1%	\$291	-5.0%	110	80	495	32	9.3	92.9%
YTD:	637	11.8%	\$387,929,478	5.0%	\$608,994	-6.0%	\$472,990	-5.4%	\$321	-2.2%	108	1,357	538	465		92.4%
Single Family	48	26.3%	\$31,821,195	75.9%	\$662,942	39.2%	\$455,000	2.8%	\$291	-5.0%	110	80	486	31	9.2	92.9%
YTD:	637	12.7%	\$387,929,478	5.7%	\$608,994	-6.2%	\$472,990	-5.2%	\$321	-2.4%	108	1,329	518	464		92.4%
Townhouse	-	0.0%	-	0.0%	-	0.0%	-	0.0%	-	0.0%	-	-	-	-	-	0.0%
YTD:	-	-100.0%	-	-100.0%	-	-100.0%	-	-100.0%	-	-100.0%	-	-	-	-	-	0.0%
Condominium	-	-100.0%	-	-100.0%	-	-100.0%	-	-100.0%	-	0.0%	-	-	9	1	-	0.0%
YTD:	-	-100.0%	-	-100.0%	-	-100.0%	-	-100.0%	-	0.0%	-	28	19	1		0.0%
Existing Home																
Residential (SF/COND/TH)	35	2.9%	\$26,963,120	68.6%	\$770,375	63.7%	\$477,500	12.5%	\$321	1.5%	113	57	424	28	10.8	92.4%
YTD:	472	4.9%	\$318,850,901	8.0%	\$675,532	3.0%	\$509,975	2.0%	\$352	3.9%	119	1,076	442	309		91.4%
Single Family	35	6.1%	\$26,963,120	71.5%	\$770,375	61.7%	\$477,500	8.8%	\$321	1.5%	113	57	417	27	10.6	92.4%
YTD:	472	6.1%	\$318,850,901	8.9%	\$675,532	2.7%	\$509,975	2.0%	\$352	3.5%	119	1,060	430	308		91.4%
Townhouse	-	0.0%	-	0.0%	-	0.0%	-	0.0%	-	0.0%	-	-	-	-	-	0.0%
YTD:	-	-100.0%	-	-100.0%	-	-100.0%	-	-100.0%	-	-100.0%	-	-	-	-	-	0.0%
Condominium	-	-100.0%	-	-100.0%	-	-100.0%	-	-100.0%	-	0.0%	-	-	7	1	-	0.0%
YTD:	-	-100.0%	-	-100.0%	-	-100.0%	-	-100.0%	-	0.0%	-	16	12	1		0.0%
New Construction																
Residential (SF/COND/TH)	12	140.0%	\$4,204,900	77.7%	\$350,408	-26.0%	\$331,999	-26.1%	\$207	-16.7%	102	23	71	4	5.2	94.3%
YTD:	163	35.8%	\$67,934,518	-8.4%	\$416,776	-32.6%	\$382,995	-22.1%	\$230	-19.7%	76	281	96	156		95.0%
Single Family	12	140.0%	\$4,204,900	77.7%	\$350,408	-26.0%	\$331,999	-26.1%	\$207	-16.7%	102	23	69	4	5.1	94.3%
YTD:	163	35.8%	\$67,934,518	-8.4%	\$416,776	-32.6%	\$382,995	-22.1%	\$230	-19.7%	76	269	88	156		95.0%
Townhouse	-	0.0%	-	0.0%	-	0.0%	-	0.0%	-	0.0%	-	-	-	-	-	0.0%
YTD:	-	0.0%	-	0.0%	-	0.0%	-	0.0%	-	0.0%	-	-	-	-	-	0.0%
Condominium	-	0.0%	-	0.0%	-	0.0%	-	0.0%	-	0.0%	-	-	2	-	-	0.0%
YTD:	-	0.0%	-	0.0%	-	0.0%	-	0.0%	-	0.0%	-	12	7	-		0.0%

* Local Market Area Code: CHC; Type: Custom Defined Market

** Closed Sale counts for most recent 3 months are Preliminary.

Market Analysis By Local Market Area*: Fredericksburg

Property Type	Closed Sales**	YoY%	Dollar Volume	YoY%	Average Price	YoY%	Median Price	YoY%	Price/Sqft	YoY%	DOM	New Listings	Active Listings	Pending Sales	Months Inventory	Close To OLP
All(New and Existing)																
Residential (SF/COND/TH)	22	57.1%	\$11,257,056	52.2%	\$511,684	-3.2%	\$417,500	-5.4%	\$250	-41.3%	73	38	159	17	6.5	94.8%
YTD:	294	52.3%	\$150,909,766	24.5%	\$513,299	-18.3%	\$451,500	-12.3%	\$287	-20.4%	90	542	174	207		93.2%
Single Family	22	57.1%	\$11,257,056	52.2%	\$511,684	-3.2%	\$417,500	-5.4%	\$250	-41.3%	73	38	156	16	6.4	94.8%
YTD:	294	55.6%	\$150,909,766	26.8%	\$513,299	-18.5%	\$451,500	-12.3%	\$287	-21.1%	90	527	165	206		93.2%
Townhouse	-	0.0%	-	0.0%	-	0.0%	-	0.0%	-	0.0%	-	-	-	-	-	0.0%
YTD:	-	-100.0%	-	-100.0%	-	-100.0%	-	-100.0%	-	-100.0%	-	-	-	-	-	0.0%
Condominium	-	0.0%	-	0.0%	-	0.0%	-	0.0%	-	0.0%	-	-	3	1	-	0.0%
YTD:	-	0.0%	-	0.0%	-	0.0%	-	0.0%	-	0.0%	-	15	8	1		0.0%
Existing Home																
Residential (SF/COND/TH)	12	-7.7%	\$8,026,031	16.9%	\$668,836	26.6%	\$469,795	7.0%	\$294	-33.1%	84	27	142	14	9.1	94.3%
YTD:	187	6.9%	\$111,790,315	0.3%	\$597,809	-6.2%	\$501,095	-2.7%	\$334	-9.3%	119	403	148	98		92.1%
Single Family	12	-7.7%	\$8,026,031	16.9%	\$668,836	26.6%	\$469,795	7.0%	\$294	-33.1%	84	27	140	13	9.0	94.3%
YTD:	187	9.4%	\$111,790,315	2.3%	\$597,809	-6.5%	\$501,095	-0.2%	\$334	-10.3%	119	397	146	97		92.1%
Townhouse	-	0.0%	-	0.0%	-	0.0%	-	0.0%	-	0.0%	-	-	-	-	-	0.0%
YTD:	-	-100.0%	-	-100.0%	-	-100.0%	-	-100.0%	-	-100.0%	-	-	-	-	-	0.0%
Condominium	-	0.0%	-	0.0%	-	0.0%	-	0.0%	-	0.0%	-	-	2	1	-	0.0%
YTD:	-	0.0%	-	0.0%	-	0.0%	-	0.0%	-	0.0%	-	6	2	1		0.0%
New Construction																
Residential (SF/COND/TH)	10	900.0%	\$3,196,102	503.0%	\$319,610	-39.7%	\$304,999	-42.5%	\$197	-23.9%	60	11	17	3	1.9	95.5%
YTD:	107	494.4%	\$39,055,669	303.7%	\$365,006	-32.1%	\$316,999	-40.1%	\$206	-28.7%	39	139	25	109		95.1%
Single Family	10	900.0%	\$3,196,102	503.0%	\$319,610	-39.7%	\$304,999	-42.5%	\$197	-23.9%	60	11	16	3	1.8	95.5%
YTD:	107	494.4%	\$39,055,669	303.7%	\$365,006	-32.1%	\$316,999	-40.1%	\$206	-28.7%	39	130	19	109		95.1%
Townhouse	-	0.0%	-	0.0%	-	0.0%	-	0.0%	-	0.0%	-	-	-	-	-	0.0%
YTD:	-	0.0%	-	0.0%	-	0.0%	-	0.0%	-	0.0%	-	-	-	-	-	0.0%
Condominium	-	0.0%	-	0.0%	-	0.0%	-	0.0%	-	0.0%	-	-	1	-	-	0.0%
YTD:	-	0.0%	-	0.0%	-	0.0%	-	0.0%	-	0.0%	-	9	6	-		0.0%

* Local Market Area Code: 335; Type: Census Place Group
 ** Closed Sale counts for most recent 3 months are Preliminary.

Market Analysis By Local Market Area*: Harper

Property Type	Closed Sales**	YoY%	Dollar Volume	YoY%	Average Price	YoY%	Median Price	YoY%	Price/Sqft	YoY%	DOM	New Listings	Active Listings	Pending Sales	Months Inventory	Close To OLP
All(New and Existing)																
Residential (SF/COND/TH)	1	-75.0%	\$969,900	-35.6%	\$969,900	157.4%	\$969,900	142.3%	\$386	77.7%	314	2	13	-	8.2	0.0%
YTD:	19	-34.5%	\$7,016,900	-44.1%	\$369,311	-14.7%	\$325,000	-20.7%	\$208	-25.4%	100	49	18	14		93.0%
Single Family	1	-75.0%	\$969,900	-35.6%	\$969,900	157.4%	\$969,900	142.3%	\$386	77.7%	314	2	13	-	8.2	0.0%
YTD:	19	-34.5%	\$7,016,900	-44.1%	\$369,311	-14.7%	\$325,000	-20.7%	\$208	-25.4%	100	49	18	14		93.0%
Townhouse	-	0.0%	-	0.0%	-	0.0%	-	0.0%	-	0.0%	-	-	-	-	-	0.0%
YTD:	-	0.0%	-	0.0%	-	0.0%	-	0.0%	-	0.0%	-	-	-	-	-	0.0%
Condominium	-	0.0%	-	0.0%	-	0.0%	-	0.0%	-	0.0%	-	-	-	-	-	0.0%
YTD:	-	0.0%	-	0.0%	-	0.0%	-	0.0%	-	0.0%	-	-	-	-	-	0.0%
Existing Home																
Residential (SF/COND/TH)	1	-50.0%	\$969,900	55.4%	\$969,900	210.9%	\$969,900	210.9%	\$386	114.9%	314	2	13	-	8.2	0.0%
YTD:	19	0.0%	\$7,016,900	-10.7%	\$369,311	-10.7%	\$325,000	-13.3%	\$208	-22.5%	100	48	17	14		93.0%
Single Family	1	-50.0%	\$969,900	55.4%	\$969,900	210.9%	\$969,900	210.9%	\$386	114.9%	314	2	13	-	8.2	0.0%
YTD:	19	0.0%	\$7,016,900	-10.7%	\$369,311	-10.7%	\$325,000	-13.3%	\$208	-22.5%	100	48	17	14		93.0%
Townhouse	-	0.0%	-	0.0%	-	0.0%	-	0.0%	-	0.0%	-	-	-	-	-	0.0%
YTD:	-	0.0%	-	0.0%	-	0.0%	-	0.0%	-	0.0%	-	-	-	-	-	0.0%
Condominium	-	0.0%	-	0.0%	-	0.0%	-	0.0%	-	0.0%	-	-	-	-	-	0.0%
YTD:	-	0.0%	-	0.0%	-	0.0%	-	0.0%	-	0.0%	-	-	-	-	-	0.0%
New Construction																
Residential (SF/COND/TH)	-	-100.0%	-	-100.0%	-	-100.0%	-	-100.0%	-	-100.0%	-	-	-	-	-	0.0%
YTD:	-	-100.0%	-	-100.0%	-	-100.0%	-	-100.0%	-	-100.0%	-	1	1	-		0.0%
Single Family	-	-100.0%	-	-100.0%	-	-100.0%	-	-100.0%	-	-100.0%	-	-	-	-	-	0.0%
YTD:	-	-100.0%	-	-100.0%	-	-100.0%	-	-100.0%	-	-100.0%	-	1	1	-		0.0%
Townhouse	-	0.0%	-	0.0%	-	0.0%	-	0.0%	-	0.0%	-	-	-	-	-	0.0%
YTD:	-	0.0%	-	0.0%	-	0.0%	-	0.0%	-	0.0%	-	-	-	-	-	0.0%
Condominium	-	0.0%	-	0.0%	-	0.0%	-	0.0%	-	0.0%	-	-	-	-	-	0.0%
YTD:	-	0.0%	-	0.0%	-	0.0%	-	0.0%	-	0.0%	-	-	-	-	-	0.0%

* Local Market Area Code: 404; Type: Census Place Group
 ** Closed Sale counts for most recent 3 months are Preliminary.

Market Analysis By Local Market Area*: Johnson City

Property Type	Closed Sales**	YoY%	Dollar Volume	YoY%	Average Price	YoY%	Median Price	YoY%	Price/Sqft	YoY%	DOM	New Listings	Active Listings	Pending Sales	Months Inventory	Close To OLP
All(New and Existing)																
Residential (SF/COND/TH)	1	-66.7%	\$140,000	-88.1%	\$140,000	-64.4%	\$140,000	-68.5%	\$114	-51.4%	13	5	22	3	13.2	80.0%
YTD:	20	-9.1%	\$8,328,300	-0.7%	\$416,415	9.2%	\$364,000	-2.6%	\$251	-4.3%	52	50	16	22		91.3%
Single Family	1	-66.7%	\$140,000	-88.1%	\$140,000	-64.4%	\$140,000	-68.5%	\$114	-51.4%	13	5	22	3	13.2	80.0%
YTD:	20	-9.1%	\$8,328,300	-0.7%	\$416,415	9.2%	\$364,000	-2.6%	\$251	-4.3%	52	50	16	22		91.3%
Townhouse	-	0.0%	-	0.0%	-	0.0%	-	0.0%	-	0.0%	-	-	-	-	-	0.0%
YTD:	-	0.0%	-	0.0%	-	0.0%	-	0.0%	-	0.0%	-	-	-	-	-	0.0%
Condominium	-	0.0%	-	0.0%	-	0.0%	-	0.0%	-	0.0%	-	-	-	-	-	0.0%
YTD:	-	0.0%	-	0.0%	-	0.0%	-	0.0%	-	0.0%	-	-	-	-	-	0.0%
Existing Home																
Residential (SF/COND/TH)	1	-66.7%	\$140,000	-88.1%	\$140,000	-64.4%	\$140,000	-68.5%	\$114	-51.4%	13	5	21	3	12.6	80.0%
YTD:	20	-4.8%	\$8,328,300	4.8%	\$416,415	10.1%	\$364,000	-2.0%	\$251	-4.1%	52	46	14	22		91.3%
Single Family	1	-66.7%	\$140,000	-88.1%	\$140,000	-64.4%	\$140,000	-68.5%	\$114	-51.4%	13	5	21	3	12.6	80.0%
YTD:	20	-4.8%	\$8,328,300	4.8%	\$416,415	10.1%	\$364,000	-2.0%	\$251	-4.1%	52	46	14	22		91.3%
Townhouse	-	0.0%	-	0.0%	-	0.0%	-	0.0%	-	0.0%	-	-	-	-	-	0.0%
YTD:	-	0.0%	-	0.0%	-	0.0%	-	0.0%	-	0.0%	-	-	-	-	-	0.0%
Condominium	-	0.0%	-	0.0%	-	0.0%	-	0.0%	-	0.0%	-	-	-	-	-	0.0%
YTD:	-	0.0%	-	0.0%	-	0.0%	-	0.0%	-	0.0%	-	-	-	-	-	0.0%
New Construction																
Residential (SF/COND/TH)	-	0.0%	-	0.0%	-	0.0%	-	0.0%	-	0.0%	-	-	1	-	-	0.0%
YTD:	-	-100.0%	-	-100.0%	-	-100.0%	-	-100.0%	-	-100.0%	-	4	2	-	-	0.0%
Single Family	-	0.0%	-	0.0%	-	0.0%	-	0.0%	-	0.0%	-	-	1	-	-	0.0%
YTD:	-	-100.0%	-	-100.0%	-	-100.0%	-	-100.0%	-	-100.0%	-	4	2	-	-	0.0%
Townhouse	-	0.0%	-	0.0%	-	0.0%	-	0.0%	-	0.0%	-	-	-	-	-	0.0%
YTD:	-	0.0%	-	0.0%	-	0.0%	-	0.0%	-	0.0%	-	-	-	-	-	0.0%
Condominium	-	0.0%	-	0.0%	-	0.0%	-	0.0%	-	0.0%	-	-	-	-	-	0.0%
YTD:	-	0.0%	-	0.0%	-	0.0%	-	0.0%	-	0.0%	-	-	-	-	-	0.0%

* Local Market Area Code: 484; Type: Census Place Group
 ** Closed Sale counts for most recent 3 months are Preliminary.

Market Analysis By Local Market Area*: Junction

Property Type	Closed Sales**	YoY%	Dollar Volume	YoY%	Average Price	YoY%	Median Price	YoY%	Price/Sqft	YoY%	DOM	New Listings	Active Listings	Pending Sales	Months Inventory	Close To OLP
All(New and Existing)																
Residential (SF/COND/TH)	1	0.0%	\$168,900	-22.8%	\$168,900	-22.8%	\$168,900	-22.8%	\$87	-46.6%	322	-	6	1	9.0	91.3%
YTD:	8	33.3%	\$992,900	2.3%	\$124,113	-23.3%	\$133,000	-27.4%	\$106	-29.2%	83	15	5	7		91.3%
Single Family	1	0.0%	\$168,900	-22.8%	\$168,900	-22.8%	\$168,900	-22.8%	\$87	-46.6%	322	-	6	1	9.0	91.3%
YTD:	8	33.3%	\$992,900	2.3%	\$124,113	-23.3%	\$133,000	-27.4%	\$106	-29.2%	83	15	5	7		91.3%
Townhouse	-	0.0%	-	0.0%	-	0.0%	-	0.0%	-	0.0%	-	-	-	-	-	0.0%
YTD:	-	0.0%	-	0.0%	-	0.0%	-	0.0%	-	0.0%	-	-	-	-	-	0.0%
Condominium	-	0.0%	-	0.0%	-	0.0%	-	0.0%	-	0.0%	-	-	-	-	-	0.0%
YTD:	-	0.0%	-	0.0%	-	0.0%	-	0.0%	-	0.0%	-	-	-	-	-	0.0%
Existing Home																
Residential (SF/COND/TH)	1	0.0%	\$168,900	-22.8%	\$168,900	-22.8%	\$168,900	-22.8%	\$87	-46.6%	322	-	6	1	9.0	91.3%
YTD:	8	33.3%	\$992,900	2.3%	\$124,113	-23.3%	\$133,000	-27.4%	\$106	-29.2%	83	15	5	7		91.3%
Single Family	1	0.0%	\$168,900	-22.8%	\$168,900	-22.8%	\$168,900	-22.8%	\$87	-46.6%	322	-	6	1	9.0	91.3%
YTD:	8	33.3%	\$992,900	2.3%	\$124,113	-23.3%	\$133,000	-27.4%	\$106	-29.2%	83	15	5	7		91.3%
Townhouse	-	0.0%	-	0.0%	-	0.0%	-	0.0%	-	0.0%	-	-	-	-	-	0.0%
YTD:	-	0.0%	-	0.0%	-	0.0%	-	0.0%	-	0.0%	-	-	-	-	-	0.0%
Condominium	-	0.0%	-	0.0%	-	0.0%	-	0.0%	-	0.0%	-	-	-	-	-	0.0%
YTD:	-	0.0%	-	0.0%	-	0.0%	-	0.0%	-	0.0%	-	-	-	-	-	0.0%
New Construction																
Residential (SF/COND/TH)	-	0.0%	-	0.0%	-	0.0%	-	0.0%	-	0.0%	-	-	-	-	-	0.0%
YTD:	-	0.0%	-	0.0%	-	0.0%	-	0.0%	-	0.0%	-	-	-	-	-	0.0%
Single Family	-	0.0%	-	0.0%	-	0.0%	-	0.0%	-	0.0%	-	-	-	-	-	0.0%
YTD:	-	0.0%	-	0.0%	-	0.0%	-	0.0%	-	0.0%	-	-	-	-	-	0.0%
Townhouse	-	0.0%	-	0.0%	-	0.0%	-	0.0%	-	0.0%	-	-	-	-	-	0.0%
YTD:	-	0.0%	-	0.0%	-	0.0%	-	0.0%	-	0.0%	-	-	-	-	-	0.0%
Condominium	-	0.0%	-	0.0%	-	0.0%	-	0.0%	-	0.0%	-	-	-	-	-	0.0%
YTD:	-	0.0%	-	0.0%	-	0.0%	-	0.0%	-	0.0%	-	-	-	-	-	0.0%

* Local Market Area Code: 490; Type: Census Place Group
 ** Closed Sale counts for most recent 3 months are Preliminary.

Market Analysis By Local Market Area*: Mason

Property Type	Closed Sales**	YoY%	Dollar Volume	YoY%	Average Price	YoY%	Median Price	YoY%	Price/Sqft	YoY%	DOM	New Listings	Active Listings	Pending Sales	Months Inventory	Close To OLP
All(New and Existing)																
Residential (SF/COND/TH)	2	0.0%	\$558,000	25.4%	\$279,000	25.4%	\$279,000	25.4%	\$188	0.1%	57	2	26	-	19.5	94.5%
YTD:	16	-40.7%	\$3,984,500	-48.6%	\$249,031	-13.2%	\$222,250	-7.4%	\$178	-4.8%	152	47	21	7		90.4%
Single Family	2	0.0%	\$558,000	25.4%	\$279,000	25.4%	\$279,000	25.4%	\$188	0.1%	57	2	26	-	19.5	94.5%
YTD:	16	-40.7%	\$3,984,500	-48.6%	\$249,031	-13.2%	\$222,250	-7.4%	\$178	-4.8%	152	47	21	7		90.4%
Townhouse	-	0.0%	-	0.0%	-	0.0%	-	0.0%	-	0.0%	-	-	-	-	-	0.0%
YTD:	-	0.0%	-	0.0%	-	0.0%	-	0.0%	-	0.0%	-	-	-	-	-	0.0%
Condominium	-	0.0%	-	0.0%	-	0.0%	-	0.0%	-	0.0%	-	-	-	-	-	0.0%
YTD:	-	0.0%	-	0.0%	-	0.0%	-	0.0%	-	0.0%	-	-	-	-	-	0.0%
Existing Home																
Residential (SF/COND/TH)	2	0.0%	\$558,000	25.4%	\$279,000	25.4%	\$279,000	25.4%	\$188	0.1%	57	2	23	-	17.3	94.5%
YTD:	16	-40.7%	\$3,984,500	-48.6%	\$249,031	-13.2%	\$222,250	-7.4%	\$178	-4.8%	152	44	20	7		90.4%
Single Family	2	0.0%	\$558,000	25.4%	\$279,000	25.4%	\$279,000	25.4%	\$188	0.1%	57	2	23	-	17.3	94.5%
YTD:	16	-40.7%	\$3,984,500	-48.6%	\$249,031	-13.2%	\$222,250	-7.4%	\$178	-4.8%	152	44	20	7		90.4%
Townhouse	-	0.0%	-	0.0%	-	0.0%	-	0.0%	-	0.0%	-	-	-	-	-	0.0%
YTD:	-	0.0%	-	0.0%	-	0.0%	-	0.0%	-	0.0%	-	-	-	-	-	0.0%
Condominium	-	0.0%	-	0.0%	-	0.0%	-	0.0%	-	0.0%	-	-	-	-	-	0.0%
YTD:	-	0.0%	-	0.0%	-	0.0%	-	0.0%	-	0.0%	-	-	-	-	-	0.0%
New Construction																
Residential (SF/COND/TH)	-	0.0%	-	0.0%	-	0.0%	-	0.0%	-	0.0%	-	-	3	-	-	0.0%
YTD:	-	0.0%	-	0.0%	-	0.0%	-	0.0%	-	0.0%	-	3	3	-		0.0%
Single Family	-	0.0%	-	0.0%	-	0.0%	-	0.0%	-	0.0%	-	-	3	-	-	0.0%
YTD:	-	0.0%	-	0.0%	-	0.0%	-	0.0%	-	0.0%	-	3	3	-		0.0%
Townhouse	-	0.0%	-	0.0%	-	0.0%	-	0.0%	-	0.0%	-	-	-	-	-	0.0%
YTD:	-	0.0%	-	0.0%	-	0.0%	-	0.0%	-	0.0%	-	-	-	-	-	0.0%
Condominium	-	0.0%	-	0.0%	-	0.0%	-	0.0%	-	0.0%	-	-	-	-	-	0.0%
YTD:	-	0.0%	-	0.0%	-	0.0%	-	0.0%	-	0.0%	-	-	-	-	-	0.0%

* Local Market Area Code: 620; Type: Census Place Group
 ** Closed Sale counts for most recent 3 months are Preliminary.

Market Analysis By Local Market Area*: Round Mountain

Property Type	Closed Sales**	YoY%	Dollar Volume	YoY%	Average Price	YoY%	Median Price	YoY%	Price/Sqft	YoY%	DOM	New Listings	Active Listings	Pending Sales	Months Inventory	Close To OLP
All(New and Existing)																
Residential (SF/COND/TH)	1	100.0%	\$475,000	100.0%	\$475,000	100.0%	\$475,000	100.0%	\$241	100.0%	304	-	-	-	-	95.0%
YTD:	3	100.0%	\$3,637,500	100.0%	\$1,212,500	100.0%	\$737,500	100.0%	\$582	100.0%	171	4	2	3	-	90.7%
Single Family	1	100.0%	\$475,000	100.0%	\$475,000	100.0%	\$475,000	100.0%	\$241	100.0%	304	-	-	-	-	95.0%
YTD:	3	100.0%	\$3,637,500	100.0%	\$1,212,500	100.0%	\$737,500	100.0%	\$582	100.0%	171	4	2	3	-	90.7%
Townhouse	-	0.0%	-	0.0%	-	0.0%	-	0.0%	-	0.0%	-	-	-	-	-	0.0%
YTD:	-	0.0%	-	0.0%	-	0.0%	-	0.0%	-	0.0%	-	-	-	-	-	0.0%
Condominium	-	0.0%	-	0.0%	-	0.0%	-	0.0%	-	0.0%	-	-	-	-	-	0.0%
YTD:	-	0.0%	-	0.0%	-	0.0%	-	0.0%	-	0.0%	-	-	-	-	-	0.0%
Existing Home																
Residential (SF/COND/TH)	1	100.0%	\$475,000	100.0%	\$475,000	100.0%	\$475,000	100.0%	\$241	100.0%	304	-	-	-	-	95.0%
YTD:	3	100.0%	\$3,637,500	100.0%	\$1,212,500	100.0%	\$737,500	100.0%	\$582	100.0%	171	2	2	3	-	90.7%
Single Family	1	100.0%	\$475,000	100.0%	\$475,000	100.0%	\$475,000	100.0%	\$241	100.0%	304	-	-	-	-	95.0%
YTD:	3	100.0%	\$3,637,500	100.0%	\$1,212,500	100.0%	\$737,500	100.0%	\$582	100.0%	171	2	2	3	-	90.7%
Townhouse	-	0.0%	-	0.0%	-	0.0%	-	0.0%	-	0.0%	-	-	-	-	-	0.0%
YTD:	-	0.0%	-	0.0%	-	0.0%	-	0.0%	-	0.0%	-	-	-	-	-	0.0%
Condominium	-	0.0%	-	0.0%	-	0.0%	-	0.0%	-	0.0%	-	-	-	-	-	0.0%
YTD:	-	0.0%	-	0.0%	-	0.0%	-	0.0%	-	0.0%	-	-	-	-	-	0.0%
New Construction																
Residential (SF/COND/TH)	-	0.0%	-	0.0%	-	0.0%	-	0.0%	-	0.0%	-	-	-	-	-	0.0%
YTD:	-	0.0%	-	0.0%	-	0.0%	-	0.0%	-	0.0%	-	2	1	-	-	0.0%
Single Family	-	0.0%	-	0.0%	-	0.0%	-	0.0%	-	0.0%	-	-	-	-	-	0.0%
YTD:	-	0.0%	-	0.0%	-	0.0%	-	0.0%	-	0.0%	-	2	1	-	-	0.0%
Townhouse	-	0.0%	-	0.0%	-	0.0%	-	0.0%	-	0.0%	-	-	-	-	-	0.0%
YTD:	-	0.0%	-	0.0%	-	0.0%	-	0.0%	-	0.0%	-	-	-	-	-	0.0%
Condominium	-	0.0%	-	0.0%	-	0.0%	-	0.0%	-	0.0%	-	-	-	-	-	0.0%
YTD:	-	0.0%	-	0.0%	-	0.0%	-	0.0%	-	0.0%	-	-	-	-	-	0.0%

* Local Market Area Code: 871; Type: Census Place Group
 ** Closed Sale counts for most recent 3 months are Preliminary.

Market Analysis By Local Market Area*: Stonewall

Property Type	Closed Sales**	YoY%	Dollar Volume	YoY%	Average Price	YoY%	Median Price	YoY%	Price/Sqft	YoY%	DOM	New Listings	Active Listings	Pending Sales	Months Inventory	Close To OLP
All(New and Existing)																
Residential (SF/COND/TH)	-	-100.0%	-	-100.0%	-	-100.0%	-	-100.0%	-	-100.0%	-	-	2	-	4.8	0.0%
YTD:	5	150.0%	\$6,889,000	413.3%	\$1,377,800	105.3%	\$449,000	-33.1%	\$477	39.0%	67	7	2	4		82.5%
Single Family	-	-100.0%	-	-100.0%	-	-100.0%	-	-100.0%	-	-100.0%	-	-	2	-	4.8	0.0%
YTD:	5	150.0%	\$6,889,000	413.3%	\$1,377,800	105.3%	\$449,000	-33.1%	\$477	39.0%	67	7	2	4		82.5%
Townhouse	-	0.0%	-	0.0%	-	0.0%	-	0.0%	-	0.0%	-	-	-	-	-	0.0%
YTD:	-	0.0%	-	0.0%	-	0.0%	-	0.0%	-	0.0%	-	-	-	-	-	0.0%
Condominium	-	0.0%	-	0.0%	-	0.0%	-	0.0%	-	0.0%	-	-	-	-	-	0.0%
YTD:	-	0.0%	-	0.0%	-	0.0%	-	0.0%	-	0.0%	-	-	-	-	-	0.0%
Existing Home																
Residential (SF/COND/TH)	-	-100.0%	-	-100.0%	-	-100.0%	-	-100.0%	-	-100.0%	-	-	2	-	4.8	0.0%
YTD:	5	150.0%	\$6,889,000	413.3%	\$1,377,800	105.3%	\$449,000	-33.1%	\$477	39.0%	67	7	2	4		82.5%
Single Family	-	-100.0%	-	-100.0%	-	-100.0%	-	-100.0%	-	-100.0%	-	-	2	-	4.8	0.0%
YTD:	5	150.0%	\$6,889,000	413.3%	\$1,377,800	105.3%	\$449,000	-33.1%	\$477	39.0%	67	7	2	4		82.5%
Townhouse	-	0.0%	-	0.0%	-	0.0%	-	0.0%	-	0.0%	-	-	-	-	-	0.0%
YTD:	-	0.0%	-	0.0%	-	0.0%	-	0.0%	-	0.0%	-	-	-	-	-	0.0%
Condominium	-	0.0%	-	0.0%	-	0.0%	-	0.0%	-	0.0%	-	-	-	-	-	0.0%
YTD:	-	0.0%	-	0.0%	-	0.0%	-	0.0%	-	0.0%	-	-	-	-	-	0.0%
New Construction																
Residential (SF/COND/TH)	-	0.0%	-	0.0%	-	0.0%	-	0.0%	-	0.0%	-	-	-	-	-	0.0%
YTD:	-	0.0%	-	0.0%	-	0.0%	-	0.0%	-	0.0%	-	-	-	-	-	0.0%
Single Family	-	0.0%	-	0.0%	-	0.0%	-	0.0%	-	0.0%	-	-	-	-	-	0.0%
YTD:	-	0.0%	-	0.0%	-	0.0%	-	0.0%	-	0.0%	-	-	-	-	-	0.0%
Townhouse	-	0.0%	-	0.0%	-	0.0%	-	0.0%	-	0.0%	-	-	-	-	-	0.0%
YTD:	-	0.0%	-	0.0%	-	0.0%	-	0.0%	-	0.0%	-	-	-	-	-	0.0%
Condominium	-	0.0%	-	0.0%	-	0.0%	-	0.0%	-	0.0%	-	-	-	-	-	0.0%
YTD:	-	0.0%	-	0.0%	-	0.0%	-	0.0%	-	0.0%	-	-	-	-	-	0.0%

* Local Market Area Code: 966; Type: Census Place Group
 ** Closed Sale counts for most recent 3 months are Preliminary.

