

Market Analysis By State: Texas

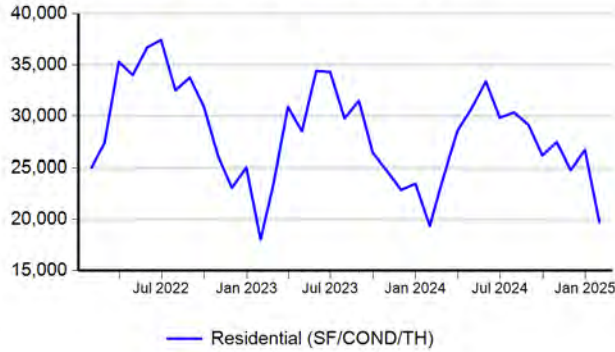
Property Type	Closed Sales*	YoY%	Dollar Volume	YoY%	Average Price	YoY%	Median Price	YoY%	Price/Sqft	YoY%	DOM	New Listings	Active Listings	Pending Sales	Months Inventory	Close To OLP
<b>All(New and Existing)</b>																
Residential (SF/COND/TH)	19,733	2.0%	\$7,996,468,330	4.8%	\$405,233	2.7%	\$327,970	0.9%	\$186	1.1%	73	46,414	120,978	24,884	4.4	93.6%
YTD:	19,733	2.0%	\$7,996,468,330	4.8%	\$405,233	2.7%	\$327,970	0.9%	\$186	1.1%	73	46,414	120,978	24,884		93.6%
Single Family	18,556	1.6%	\$7,572,777,384	4.3%	\$408,104	2.7%	\$330,000	1.5%	\$183	1.1%	72	42,936	111,310	23,492	4.3	93.7%
YTD:	18,556	1.6%	\$7,572,777,384	4.3%	\$408,104	2.7%	\$330,000	1.5%	\$183	1.1%	72	42,936	111,310	23,492		93.7%
Townhouse	519	0.6%	\$183,338,786	0.4%	\$353,254	-0.2%	\$320,000	1.6%	\$191	0.2%	67	1,449	3,440	639	4.9	94.2%
YTD:	519	0.6%	\$183,338,786	0.4%	\$353,254	-0.2%	\$320,000	1.6%	\$191	0.2%	67	1,449	3,440	639		94.2%
Condominium	636	11.0%	\$232,597,609	21.4%	\$365,720	9.4%	\$240,000	2.1%	\$255	-0.5%	91	2,029	6,228	753	7.5	91.7%
YTD:	636	11.0%	\$232,597,609	21.4%	\$365,720	9.4%	\$240,000	2.1%	\$255	-0.5%	91	2,029	6,228	753		91.7%
<b>Existing Home</b>																
Residential (SF/COND/TH)	14,395	2.2%	\$5,811,175,640	6.4%	\$403,694	4.0%	\$320,000	3.2%	\$186	1.8%	71	34,750	88,051	17,165	4.4	93.4%
YTD:	14,395	2.2%	\$5,811,175,640	6.4%	\$403,694	4.0%	\$320,000	3.2%	\$186	1.8%	71	34,750	88,051	17,165		93.4%
Single Family	13,372	1.7%	\$5,470,344,067	6.1%	\$409,089	4.3%	\$323,000	3.0%	\$183	1.9%	70	31,757	79,898	15,994	4.2	93.4%
YTD:	13,372	1.7%	\$5,470,344,067	6.1%	\$409,089	4.3%	\$323,000	3.0%	\$183	1.9%	70	31,757	79,898	15,994		93.4%
Townhouse	394	1.3%	\$129,957,241	-0.3%	\$329,841	-1.6%	\$290,500	0.2%	\$183	-0.1%	64	1,102	2,524	477	4.8	93.8%
YTD:	394	1.3%	\$129,957,241	-0.3%	\$329,841	-1.6%	\$290,500	0.2%	\$183	-0.1%	64	1,102	2,524	477		93.8%
Condominium	609	12.8%	\$204,357,534	16.7%	\$335,562	3.4%	\$230,000	0.0%	\$248	-2.3%	88	1,891	5,629	694	7.2	91.6%
YTD:	609	12.8%	\$204,357,534	16.7%	\$335,562	3.4%	\$230,000	0.0%	\$248	-2.3%	88	1,891	5,629	694		91.6%
<b>New Construction</b>																
Residential (SF/COND/TH)	5,332	1.2%	\$2,182,985,285	0.6%	\$409,412	-0.5%	\$346,000	-1.1%	\$185	-0.8%	79	11,664	32,927	7,719	4.4	94.4%
YTD:	5,332	1.2%	\$2,182,985,285	0.6%	\$409,412	-0.5%	\$346,000	-1.1%	\$185	-0.8%	79	11,664	32,927	7,719		94.4%
Single Family	5,180	1.4%	\$2,100,722,564	0.0%	\$405,545	-1.3%	\$345,265	-1.4%	\$183	-1.1%	78	11,179	31,412	7,498	4.3	94.3%
YTD:	5,180	1.4%	\$2,100,722,564	0.0%	\$405,545	-1.3%	\$345,265	-1.4%	\$183	-1.1%	78	11,179	31,412	7,498		94.3%
Townhouse	123	-3.2%	\$52,684,712	0.6%	\$428,331	3.9%	\$358,000	-3.0%	\$218	1.3%	77	347	916	162	5.5	95.5%
YTD:	123	-3.2%	\$52,684,712	0.6%	\$428,331	3.9%	\$358,000	-3.0%	\$218	1.3%	77	347	916	162		95.5%
Condominium	27	-18.2%	\$27,938,505	69.9%	\$1,034,759	107.6%	\$412,400	-13.0%	\$400	39.2%	163	138	599	59	12.1	93.0%
YTD:	27	-18.2%	\$27,938,505	69.9%	\$1,034,759	107.6%	\$412,400	-13.0%	\$400	39.2%	163	138	599	59		93.0%

\* Closed Sale counts for most recent 3 months are Preliminary.

Trend Analysis By State: Texas

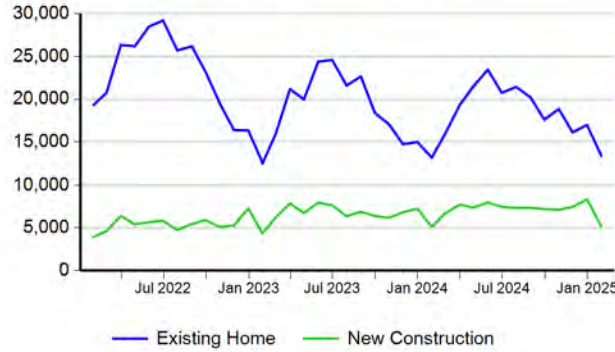
**Residential, All (New and Existing)**

Monthly Units Sold



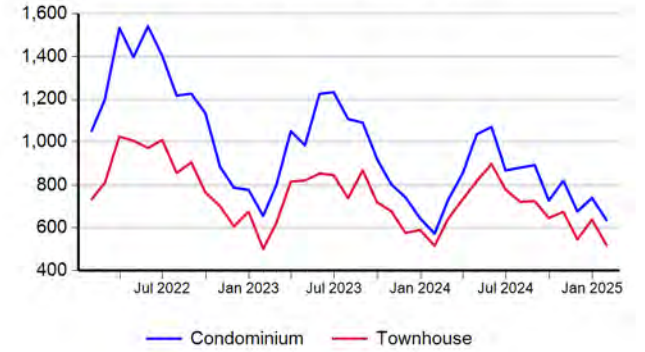
**Single Family, New vs. Existing**

Monthly Units Sold



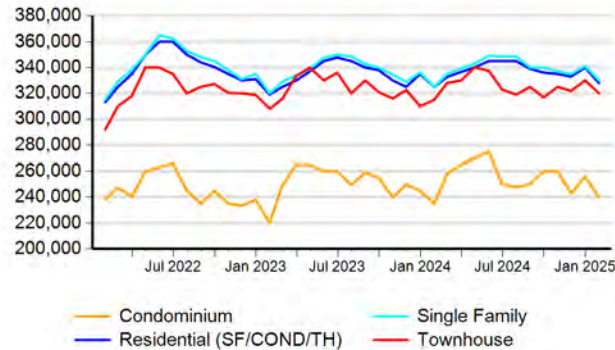
**COND/TH, All (New and Existing)**

Monthly Units Sold



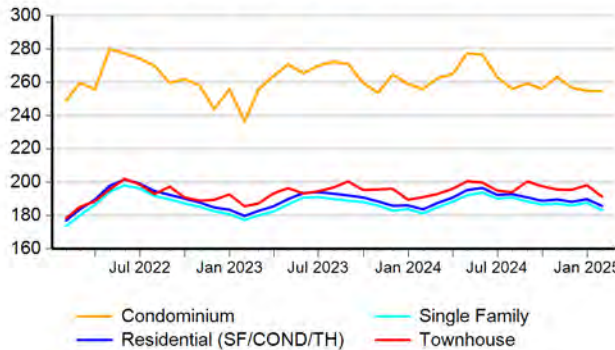
**All (New and Existing) Construction**

Median Sale Price



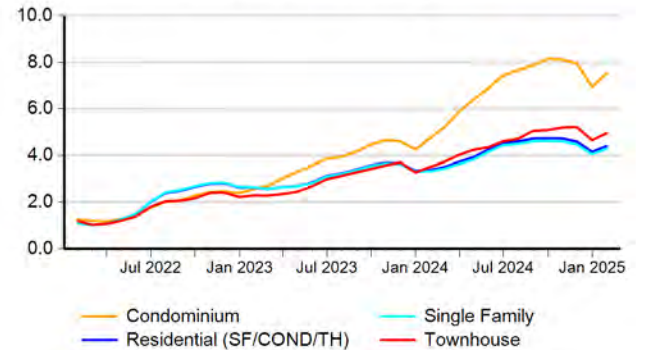
**All (New and Existing) Construction**

Average Close Price PSF



**All (New and Existing) Construction**

Months Inventory



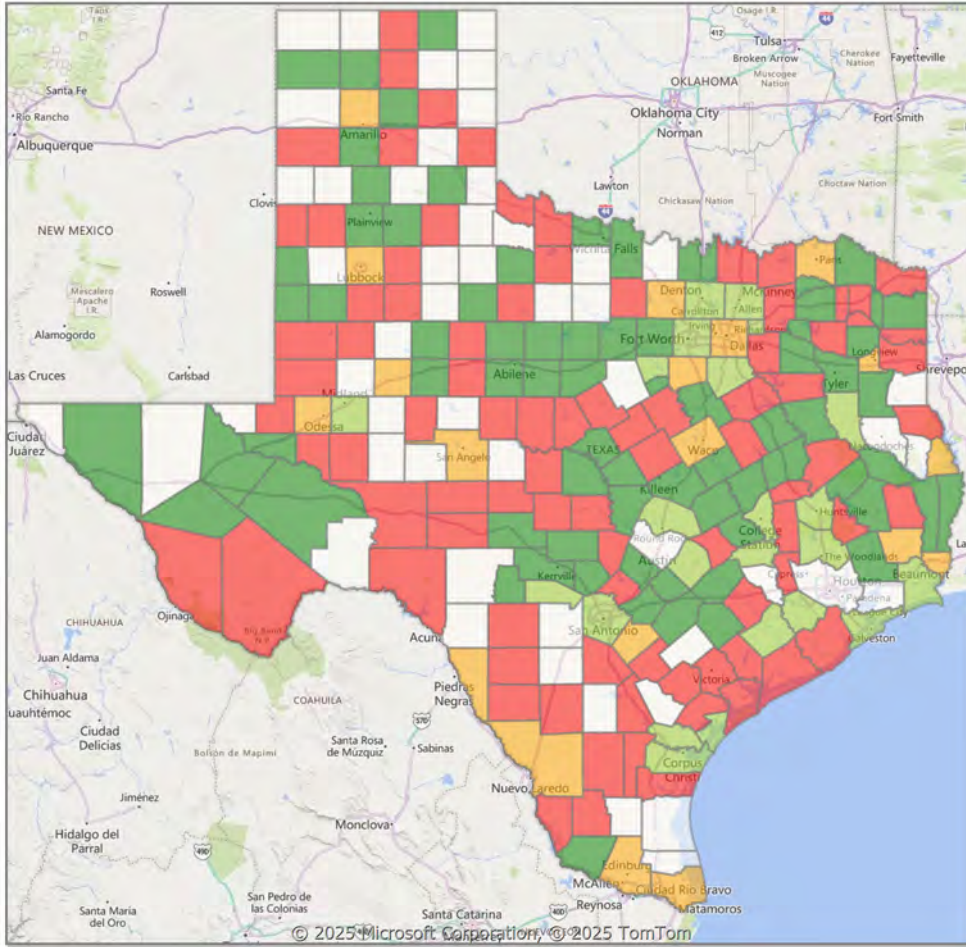
\* Closed Sale counts for most recent 3 months are Preliminary.



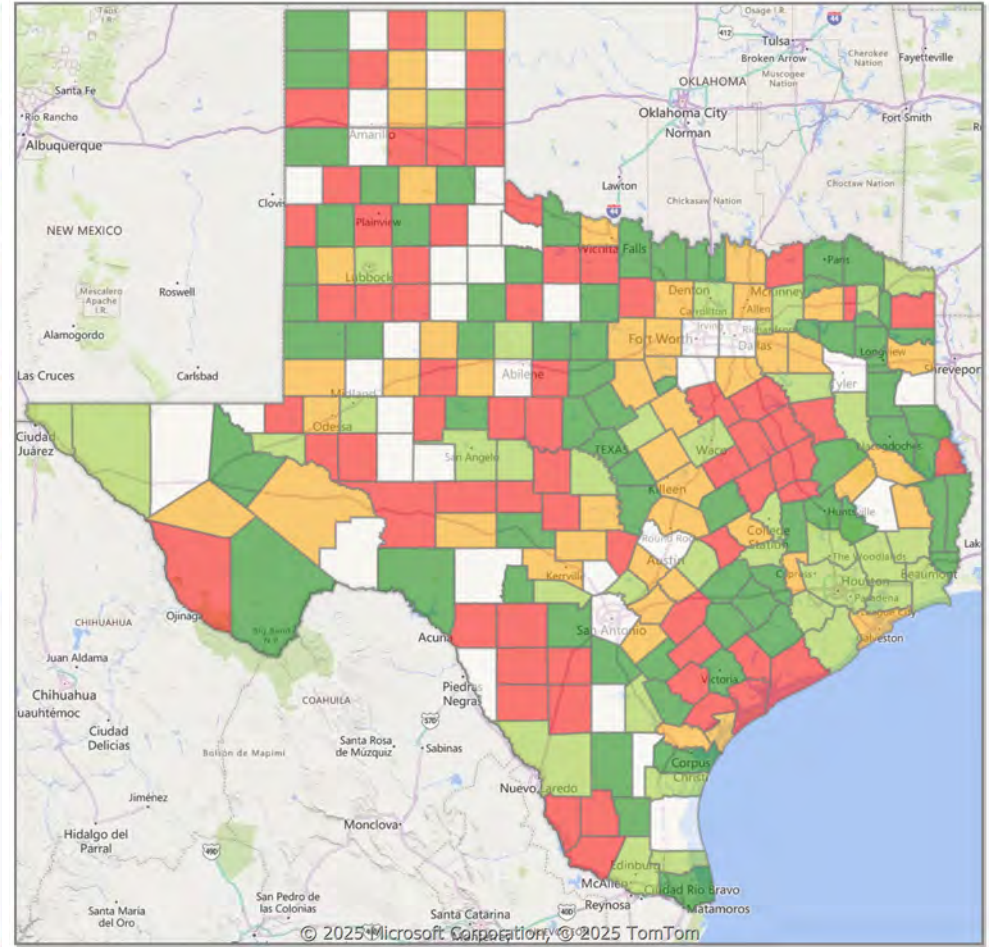


**Comparison By County in Texas**

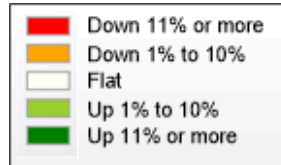
**Residential\* Closed Sales YoY Percentage Change**



**Residential\* Avg Close Price Per SqFt YoY Percentage Change**



\* Residential includes Single Family, Condominium and Townhouse.



Market Analysis By County: Blanco County

Property Type	Closed Sales*	YoY%	Dollar Volume	YoY%	Average Price	YoY%	Median Price	YoY%	Price/Sqft	YoY%	DOM	New Listings	Active Listings	Pending Sales	Months Inventory	Close To OLP
<b>All(New and Existing)</b>																
Residential (SF/COND/TH)	5	-54.6%	\$1,969,400	-73.0%	\$393,880	-40.7%	\$442,500	-11.5%	\$216	-74.5%	111	22	128	7	10.2	91.2%
YTD:	5	-54.6%	\$1,969,400	-73.0%	\$393,880	-40.7%	\$442,500	-11.5%	\$216	-74.5%	111	22	128	7		91.2%
Single Family	5	-54.6%	\$1,969,400	-73.0%	\$393,880	-40.7%	\$442,500	-11.5%	\$216	-74.5%	111	22	127	7	10.1	91.2%
YTD:	5	-54.6%	\$1,969,400	-73.0%	\$393,880	-40.7%	\$442,500	-11.5%	\$216	-74.5%	111	22	127	7		91.2%
Townhouse	-	0.0%	-	0.0%	-	0.0%	-	0.0%	-	0.0%	-	-	-	-	-	0.0%
YTD:	-	0.0%	-	0.0%	-	0.0%	-	0.0%	-	0.0%	-	-	-	-	-	0.0%
Condominium	-	0.0%	-	0.0%	-	0.0%	-	0.0%	-	0.0%	-	-	1	-	-	0.0%
YTD:	-	0.0%	-	0.0%	-	0.0%	-	0.0%	-	0.0%	-	-	1	-	-	0.0%
<b>Existing Home</b>																
Residential (SF/COND/TH)	5	-28.6%	\$1,969,400	-63.7%	\$393,880	-49.2%	\$442,500	-14.1%	\$216	-80.5%	111	15	94	6	10.1	91.2%
YTD:	5	-28.6%	\$1,969,400	-63.7%	\$393,880	-49.2%	\$442,500	-14.1%	\$216	-80.5%	111	15	94	6		91.2%
Single Family	5	-28.6%	\$1,969,400	-63.7%	\$393,880	-49.2%	\$442,500	-14.1%	\$216	-80.5%	111	15	93	6	10.0	91.2%
YTD:	5	-28.6%	\$1,969,400	-63.7%	\$393,880	-49.2%	\$442,500	-14.1%	\$216	-80.5%	111	15	93	6		91.2%
Townhouse	-	0.0%	-	0.0%	-	0.0%	-	0.0%	-	0.0%	-	-	-	-	-	0.0%
YTD:	-	0.0%	-	0.0%	-	0.0%	-	0.0%	-	0.0%	-	-	-	-	-	0.0%
Condominium	-	0.0%	-	0.0%	-	0.0%	-	0.0%	-	0.0%	-	-	1	-	-	0.0%
YTD:	-	0.0%	-	0.0%	-	0.0%	-	0.0%	-	0.0%	-	-	1	-	-	0.0%
<b>New Construction</b>																
Residential (SF/COND/TH)	-	-100.0%	-	-100.0%	-	-100.0%	-	-100.0%	-	-100.0%	-	7	34	1	10.5	0.0%
YTD:	-	-100.0%	-	-100.0%	-	-100.0%	-	-100.0%	-	-100.0%	-	7	34	1		0.0%
Single Family	-	-100.0%	-	-100.0%	-	-100.0%	-	-100.0%	-	-100.0%	-	7	34	1	10.5	0.0%
YTD:	-	-100.0%	-	-100.0%	-	-100.0%	-	-100.0%	-	-100.0%	-	7	34	1		0.0%
Townhouse	-	0.0%	-	0.0%	-	0.0%	-	0.0%	-	0.0%	-	-	-	-	-	0.0%
YTD:	-	0.0%	-	0.0%	-	0.0%	-	0.0%	-	0.0%	-	-	-	-	-	0.0%
Condominium	-	0.0%	-	0.0%	-	0.0%	-	0.0%	-	0.0%	-	-	-	-	-	0.0%
YTD:	-	0.0%	-	0.0%	-	0.0%	-	0.0%	-	0.0%	-	-	-	-	-	0.0%

\* Closed Sale counts for most recent 3 months are Preliminary.

Market Analysis By County: Gillespie County

Property Type	Closed Sales*	YoY%	Dollar Volume	YoY%	Average Price	YoY%	Median Price	YoY%	Price/Sqft	YoY%	DOM	New Listings	Active Listings	Pending Sales	Months Inventory	Close To OLP
<b>All(New and Existing)</b>																
Residential (SF/COND/TH)	28	21.7%	\$14,525,452	5.8%	\$518,766	-13.1%	\$468,555	-9.0%	\$330	-8.2%	127	102	345	26	9.3	91.7%
YTD:	28	21.7%	\$14,525,452	5.8%	\$518,766	-13.1%	\$468,555	-9.0%	\$330	-8.2%	127	102	345	26		91.7%
Single Family	28	21.7%	\$14,525,452	5.8%	\$518,766	-13.1%	\$468,555	-9.0%	\$330	-8.2%	127	101	336	26	9.1	91.7%
YTD:	28	21.7%	\$14,525,452	5.8%	\$518,766	-13.1%	\$468,555	-9.0%	\$330	-8.2%	127	101	336	26		91.7%
Townhouse	-	0.0%	-	0.0%	-	0.0%	-	0.0%	-	0.0%	-	-	-	-	-	0.0%
YTD:	-	0.0%	-	0.0%	-	0.0%	-	0.0%	-	0.0%	-	-	-	-	-	0.0%
Condominium	-	0.0%	-	0.0%	-	0.0%	-	0.0%	-	0.0%	-	1	9	-	-	0.0%
YTD:	-	0.0%	-	0.0%	-	0.0%	-	0.0%	-	0.0%	-	1	9	-	-	0.0%
<b>Existing Home</b>																
Residential (SF/COND/TH)	23	9.5%	\$12,656,387	-0.9%	\$550,278	-9.5%	\$505,000	-3.8%	\$363	-1.3%	140	90	307	18	11.3	90.6%
YTD:	23	9.5%	\$12,656,387	-0.9%	\$550,278	-9.5%	\$505,000	-3.8%	\$363	-1.3%	140	90	307	18		90.6%
Single Family	23	9.5%	\$12,656,387	-0.9%	\$550,278	-9.5%	\$505,000	-3.8%	\$363	-1.3%	140	89	300	18	11.0	90.6%
YTD:	23	9.5%	\$12,656,387	-0.9%	\$550,278	-9.5%	\$505,000	-3.8%	\$363	-1.3%	140	89	300	18		90.6%
Townhouse	-	0.0%	-	0.0%	-	0.0%	-	0.0%	-	0.0%	-	-	-	-	-	0.0%
YTD:	-	0.0%	-	0.0%	-	0.0%	-	0.0%	-	0.0%	-	-	-	-	-	0.0%
Condominium	-	0.0%	-	0.0%	-	0.0%	-	0.0%	-	0.0%	-	1	7	-	-	0.0%
YTD:	-	0.0%	-	0.0%	-	0.0%	-	0.0%	-	0.0%	-	1	7	-	-	0.0%
<b>New Construction</b>																
Residential (SF/COND/TH)	5	150.0%	\$1,932,088	100.9%	\$386,418	-19.7%	\$449,990	-6.4%	\$191	-30.3%	71	12	38	8	3.8	95.6%
YTD:	5	150.0%	\$1,932,088	100.9%	\$386,418	-19.7%	\$449,990	-6.4%	\$191	-30.3%	71	12	38	8		95.6%
Single Family	5	150.0%	\$1,932,088	100.9%	\$386,418	-19.7%	\$449,990	-6.4%	\$191	-30.3%	71	12	36	8	3.6	95.6%
YTD:	5	150.0%	\$1,932,088	100.9%	\$386,418	-19.7%	\$449,990	-6.4%	\$191	-30.3%	71	12	36	8		95.6%
Townhouse	-	0.0%	-	0.0%	-	0.0%	-	0.0%	-	0.0%	-	-	-	-	-	0.0%
YTD:	-	0.0%	-	0.0%	-	0.0%	-	0.0%	-	0.0%	-	-	-	-	-	0.0%
Condominium	-	0.0%	-	0.0%	-	0.0%	-	0.0%	-	0.0%	-	-	2	-	-	0.0%
YTD:	-	0.0%	-	0.0%	-	0.0%	-	0.0%	-	0.0%	-	-	2	-	-	0.0%

\* Closed Sale counts for most recent 3 months are Preliminary.

Market Analysis By County: Kimble County

Property Type	Closed Sales*	YoY%	Dollar Volume	YoY%	Average Price	YoY%	Median Price	YoY%	Price/Sqft	YoY%	DOM	New Listings	Active Listings	Pending Sales	Months Inventory	Close To OLP
<b>All(New and Existing)</b>																
Residential (SF/COND/TH)	1	100.0%	\$150,000	100.0%	\$150,000	100.0%	\$150,000	100.0%	\$107	100.0%	208	3	17	1	10.7	60.2%
YTD:	1	100.0%	\$150,000	100.0%	\$150,000	100.0%	\$150,000	100.0%	\$107	100.0%	208	3	17	1		60.2%
Single Family	1	100.0%	\$150,000	100.0%	\$150,000	100.0%	\$150,000	100.0%	\$107	100.0%	208	3	17	1	10.7	60.2%
YTD:	1	100.0%	\$150,000	100.0%	\$150,000	100.0%	\$150,000	100.0%	\$107	100.0%	208	3	17	1		60.2%
Townhouse	-	0.0%	-	0.0%	-	0.0%	-	0.0%	-	0.0%	-	-	-	-	-	0.0%
YTD:	-	0.0%	-	0.0%	-	0.0%	-	0.0%	-	0.0%	-	-	-	-	-	0.0%
Condominium	-	0.0%	-	0.0%	-	0.0%	-	0.0%	-	0.0%	-	-	-	-	-	0.0%
YTD:	-	0.0%	-	0.0%	-	0.0%	-	0.0%	-	0.0%	-	-	-	-	-	0.0%
<b>Existing Home</b>																
Residential (SF/COND/TH)	1	100.0%	\$150,000	100.0%	\$150,000	100.0%	\$150,000	100.0%	\$107	100.0%	208	3	16	1	11.3	60.2%
YTD:	1	100.0%	\$150,000	100.0%	\$150,000	100.0%	\$150,000	100.0%	\$107	100.0%	208	3	16	1		60.2%
Single Family	1	100.0%	\$150,000	100.0%	\$150,000	100.0%	\$150,000	100.0%	\$107	100.0%	208	3	16	1	11.3	60.2%
YTD:	1	100.0%	\$150,000	100.0%	\$150,000	100.0%	\$150,000	100.0%	\$107	100.0%	208	3	16	1		60.2%
Townhouse	-	0.0%	-	0.0%	-	0.0%	-	0.0%	-	0.0%	-	-	-	-	-	0.0%
YTD:	-	0.0%	-	0.0%	-	0.0%	-	0.0%	-	0.0%	-	-	-	-	-	0.0%
Condominium	-	0.0%	-	0.0%	-	0.0%	-	0.0%	-	0.0%	-	-	-	-	-	0.0%
YTD:	-	0.0%	-	0.0%	-	0.0%	-	0.0%	-	0.0%	-	-	-	-	-	0.0%
<b>New Construction</b>																
Residential (SF/COND/TH)	-	0.0%	-	0.0%	-	0.0%	-	0.0%	-	0.0%	-	-	1	-	6.0	0.0%
YTD:	-	0.0%	-	0.0%	-	0.0%	-	0.0%	-	0.0%	-	-	1	-		0.0%
Single Family	-	0.0%	-	0.0%	-	0.0%	-	0.0%	-	0.0%	-	-	1	-	6.0	0.0%
YTD:	-	0.0%	-	0.0%	-	0.0%	-	0.0%	-	0.0%	-	-	1	-		0.0%
Townhouse	-	0.0%	-	0.0%	-	0.0%	-	0.0%	-	0.0%	-	-	-	-	-	0.0%
YTD:	-	0.0%	-	0.0%	-	0.0%	-	0.0%	-	0.0%	-	-	-	-	-	0.0%
Condominium	-	0.0%	-	0.0%	-	0.0%	-	0.0%	-	0.0%	-	-	-	-	-	0.0%
YTD:	-	0.0%	-	0.0%	-	0.0%	-	0.0%	-	0.0%	-	-	-	-	-	0.0%

\* Closed Sale counts for most recent 3 months are Preliminary.

Market Analysis By County: Mason County

Property Type	Closed Sales*	YoY%	Dollar Volume	YoY%	Average Price	YoY%	Median Price	YoY%	Price/Sqft	YoY%	DOM	New Listings	Active Listings	Pending Sales	Months Inventory	Close To OLP
<b>All(New and Existing)</b>																
Residential (SF/COND/TH)	-	-100.0%	-	-100.0%	-	-100.0%	-	-100.0%	-	-100.0%	-	6	28	3	16.0	0.0%
YTD:	-	-100.0%	-	-100.0%	-	-100.0%	-	-100.0%	-	-100.0%	-	6	28	3		0.0%
Single Family	-	-100.0%	-	-100.0%	-	-100.0%	-	-100.0%	-	-100.0%	-	6	28	3	16.0	0.0%
YTD:	-	-100.0%	-	-100.0%	-	-100.0%	-	-100.0%	-	-100.0%	-	6	28	3		0.0%
Townhouse	-	0.0%	-	0.0%	-	0.0%	-	0.0%	-	0.0%	-	-	-	-	-	0.0%
YTD:	-	0.0%	-	0.0%	-	0.0%	-	0.0%	-	0.0%	-	-	-	-	-	0.0%
Condominium	-	0.0%	-	0.0%	-	0.0%	-	0.0%	-	0.0%	-	-	-	-	-	0.0%
YTD:	-	0.0%	-	0.0%	-	0.0%	-	0.0%	-	0.0%	-	-	-	-	-	0.0%
<b>Existing Home</b>																
Residential (SF/COND/TH)	-	-100.0%	-	-100.0%	-	-100.0%	-	-100.0%	-	-100.0%	-	6	27	3	16.2	0.0%
YTD:	-	-100.0%	-	-100.0%	-	-100.0%	-	-100.0%	-	-100.0%	-	6	27	3		0.0%
Single Family	-	-100.0%	-	-100.0%	-	-100.0%	-	-100.0%	-	-100.0%	-	6	27	3	16.2	0.0%
YTD:	-	-100.0%	-	-100.0%	-	-100.0%	-	-100.0%	-	-100.0%	-	6	27	3		0.0%
Townhouse	-	0.0%	-	0.0%	-	0.0%	-	0.0%	-	0.0%	-	-	-	-	-	0.0%
YTD:	-	0.0%	-	0.0%	-	0.0%	-	0.0%	-	0.0%	-	-	-	-	-	0.0%
Condominium	-	0.0%	-	0.0%	-	0.0%	-	0.0%	-	0.0%	-	-	-	-	-	0.0%
YTD:	-	0.0%	-	0.0%	-	0.0%	-	0.0%	-	0.0%	-	-	-	-	-	0.0%
<b>New Construction</b>																
Residential (SF/COND/TH)	-	0.0%	-	0.0%	-	0.0%	-	0.0%	-	0.0%	-	-	1	-	12.0	0.0%
YTD:	-	0.0%	-	0.0%	-	0.0%	-	0.0%	-	0.0%	-	-	1	-		0.0%
Single Family	-	0.0%	-	0.0%	-	0.0%	-	0.0%	-	0.0%	-	-	1	-	12.0	0.0%
YTD:	-	0.0%	-	0.0%	-	0.0%	-	0.0%	-	0.0%	-	-	1	-		0.0%
Townhouse	-	0.0%	-	0.0%	-	0.0%	-	0.0%	-	0.0%	-	-	-	-	-	0.0%
YTD:	-	0.0%	-	0.0%	-	0.0%	-	0.0%	-	0.0%	-	-	-	-	-	0.0%
Condominium	-	0.0%	-	0.0%	-	0.0%	-	0.0%	-	0.0%	-	-	-	-	-	0.0%
YTD:	-	0.0%	-	0.0%	-	0.0%	-	0.0%	-	0.0%	-	-	-	-	-	0.0%

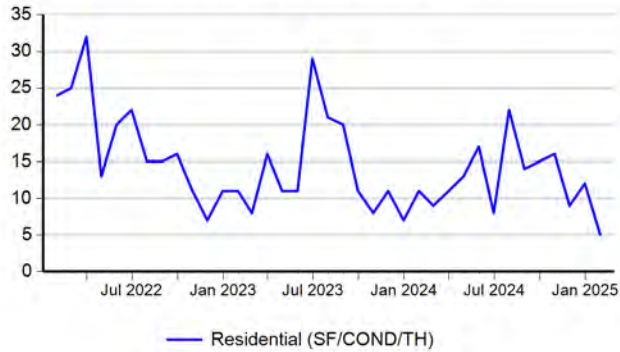
\* Closed Sale counts for most recent 3 months are Preliminary.



Trend Analysis By County: Blanco County

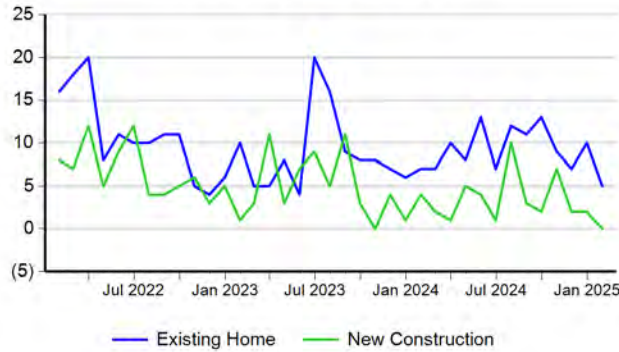
Residential, All (New and Existing)

Monthly Units Sold



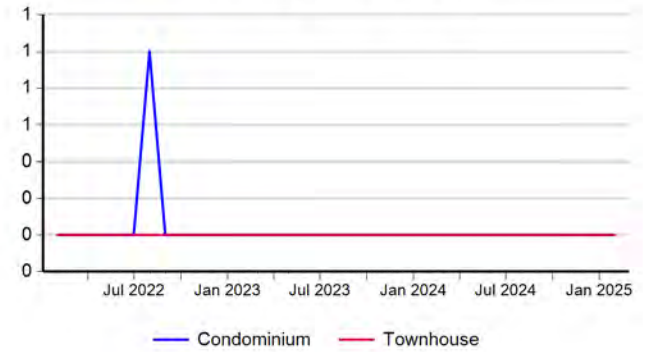
Single Family, New vs. Existing

Monthly Units Sold



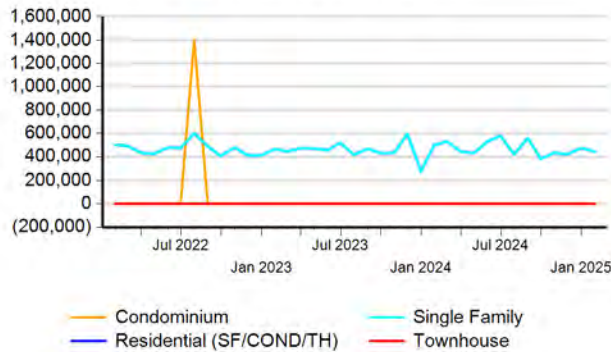
COND/TH, All (New and Existing)

Monthly Units Sold



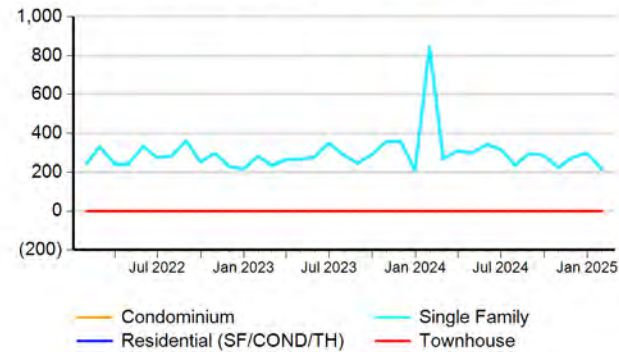
All (New and Existing) Construction

Median Sale Price



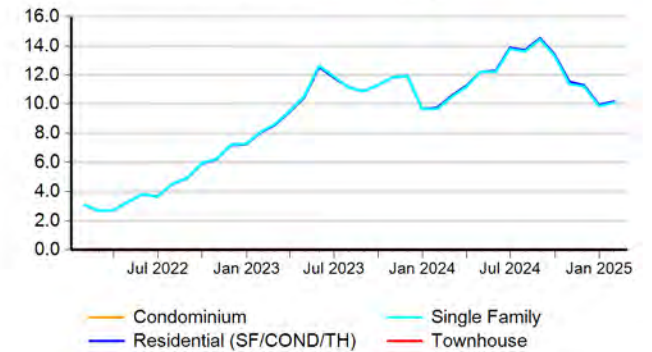
All (New and Existing) Construction

Average Close Price PSF



All (New and Existing) Construction

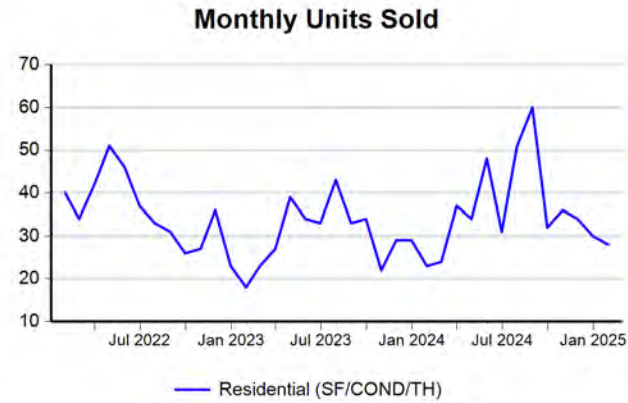
Months Inventory



\* Closed Sale counts for most recent 3 months are Preliminary.

Trend Analysis By County: Gillespie County

Residential, All (New and Existing)



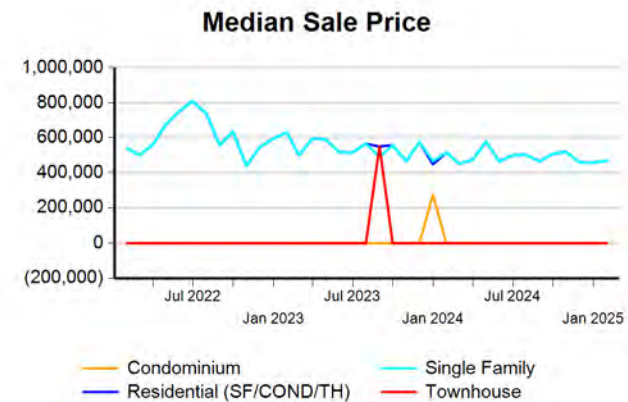
Single Family, New vs. Existing



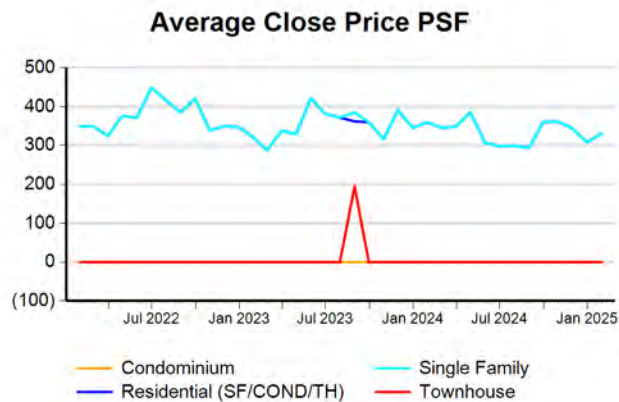
COND/TH, All (New and Existing)



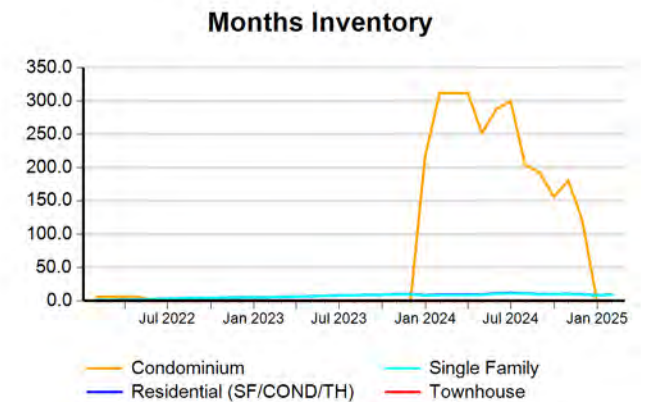
All (New and Existing) Construction



All (New and Existing) Construction



All (New and Existing) Construction



\* Closed Sale counts for most recent 3 months are Preliminary.

Trend Analysis By County: Kimble County

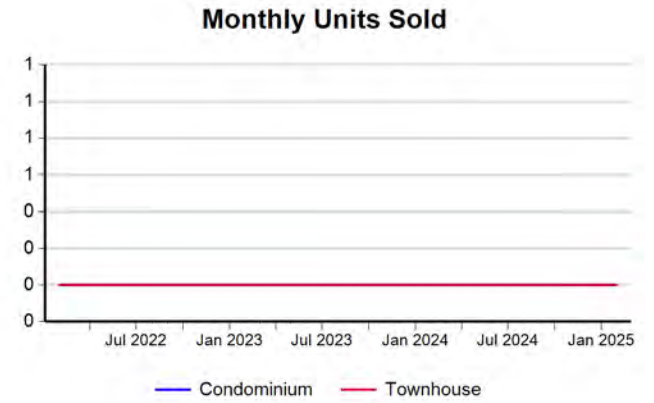
Residential, All (New and Existing)



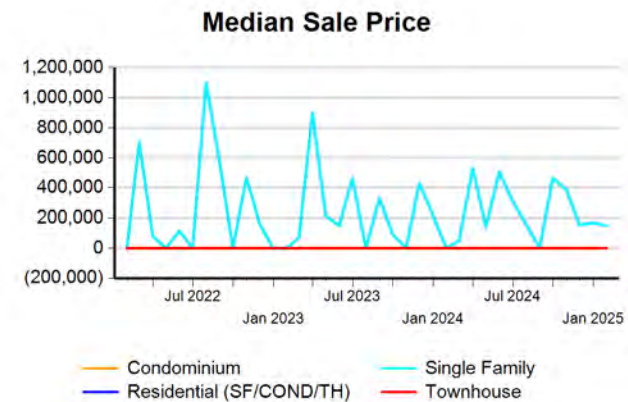
Single Family, New vs. Existing



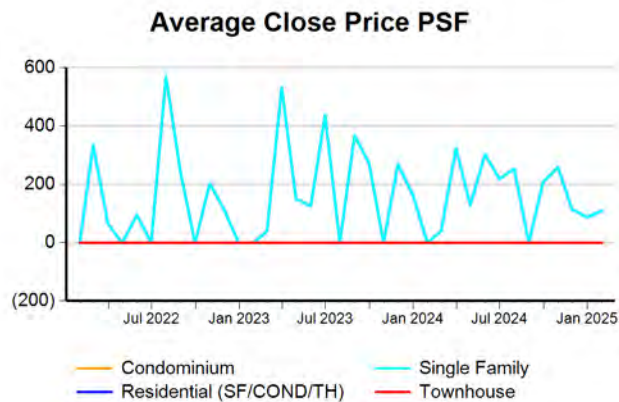
COND/TH, All (New and Existing)



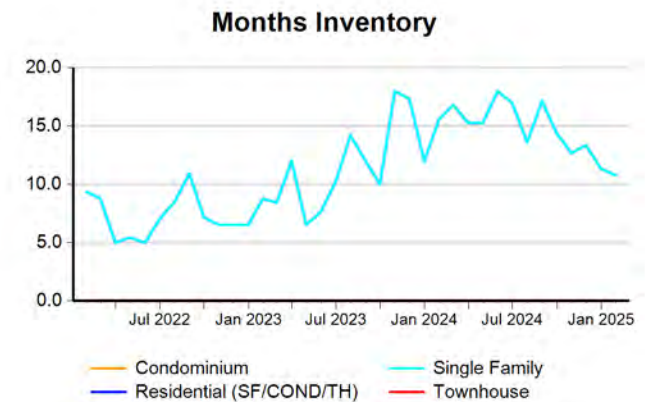
All (New and Existing) Construction



All (New and Existing) Construction



All (New and Existing) Construction



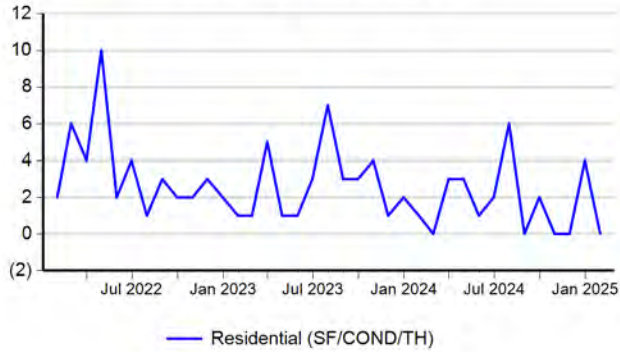
\* Closed Sale counts for most recent 3 months are Preliminary.



Trend Analysis By County: Mason County

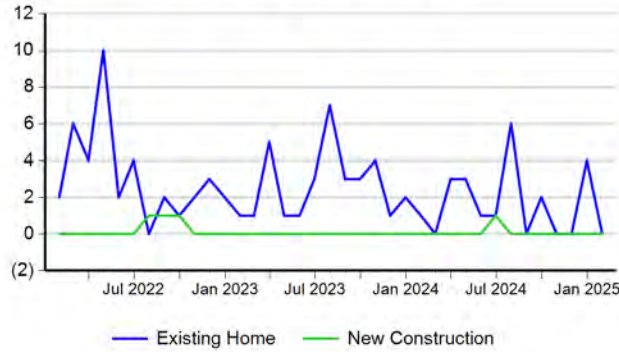
Residential, All (New and Existing)

Monthly Units Sold



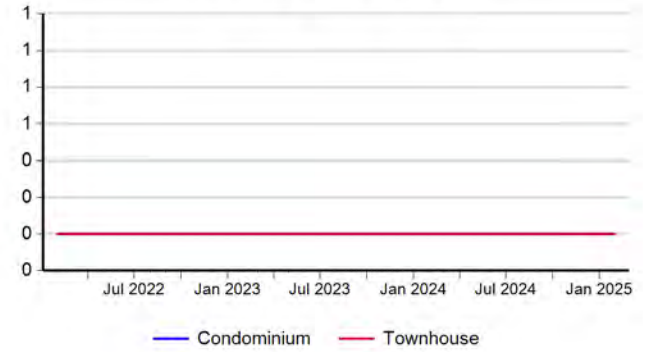
Single Family, New vs. Existing

Monthly Units Sold



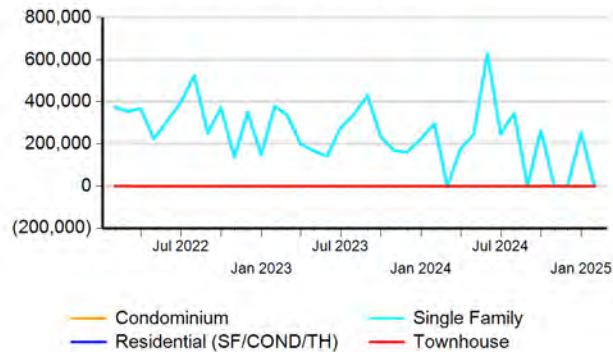
COND/TH, All (New and Existing)

Monthly Units Sold



All (New and Existing) Construction

Median Sale Price



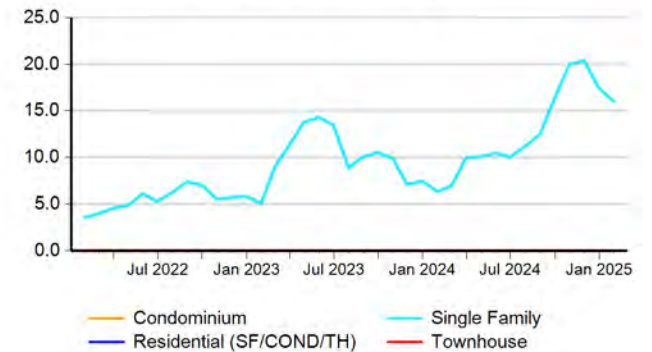
All (New and Existing) Construction

Average Close Price PSF



All (New and Existing) Construction

Months Inventory



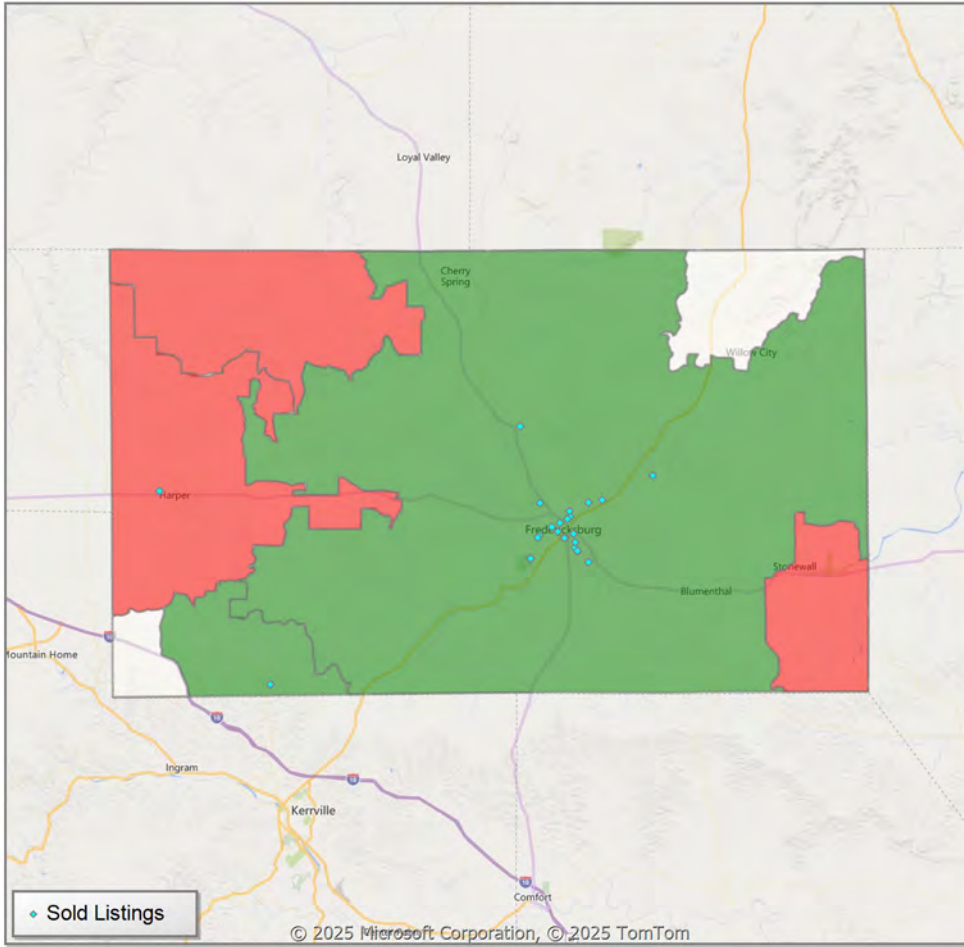
\* Closed Sale counts for most recent 3 months are Preliminary.



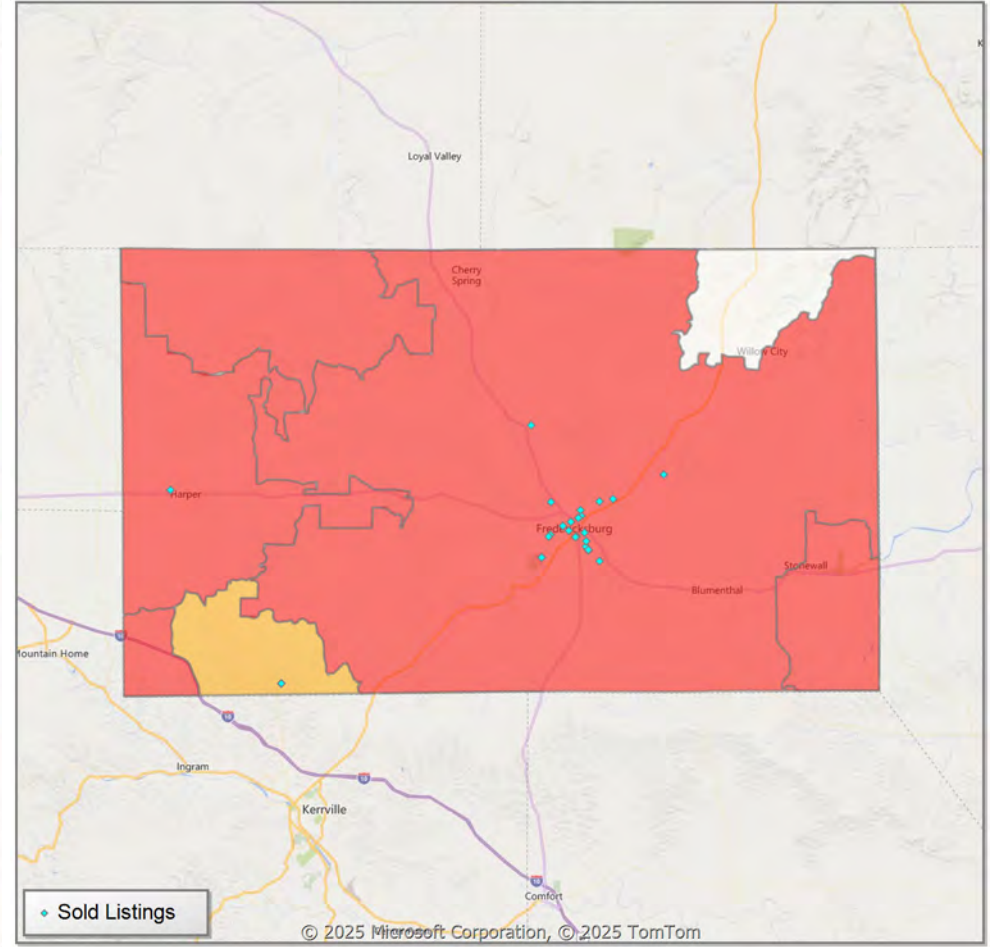


**Comparison By Zip Code\* in Gillespie County**

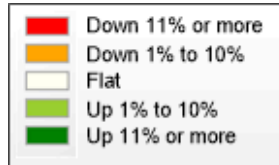
**Residential\*\* Closed Sales  
YoY Percentage Change**



**Residential\*\* Avg Close Price Per SqFt  
YoY Percentage Change**

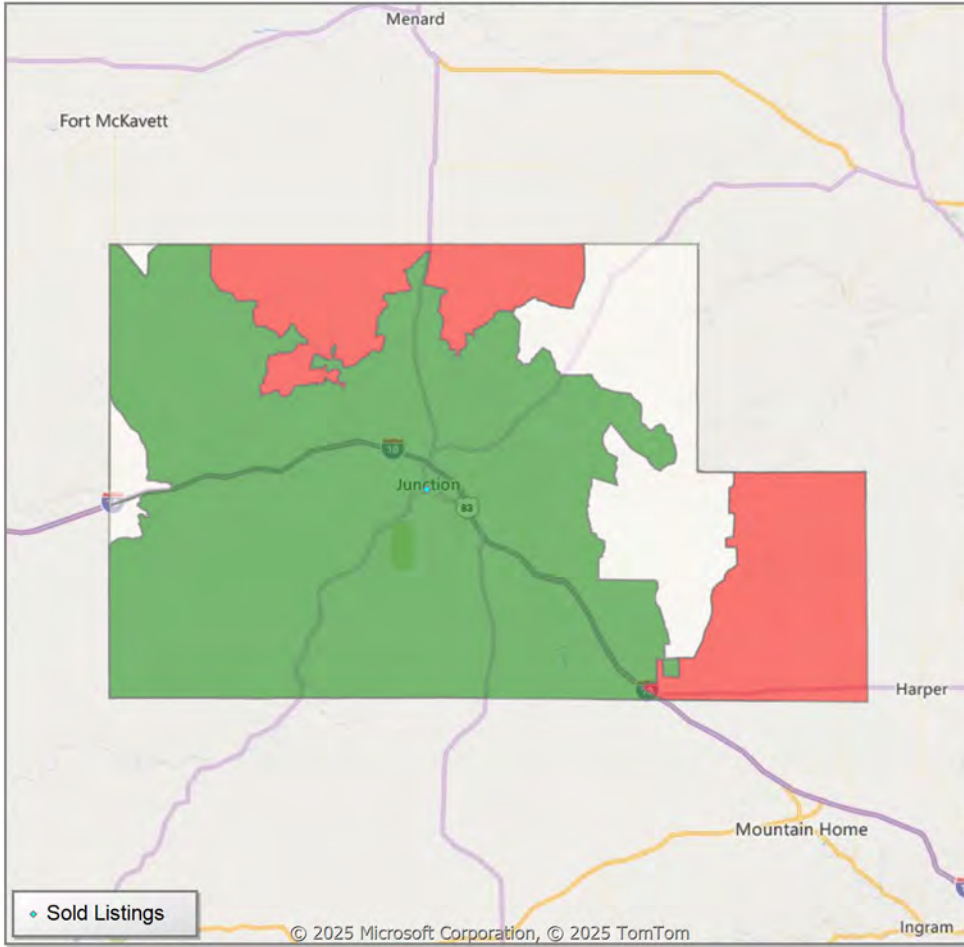


\* US Census Zip Code Tabulation Area  
\*\* Residential includes Single Family, Condominium and Townhouse.

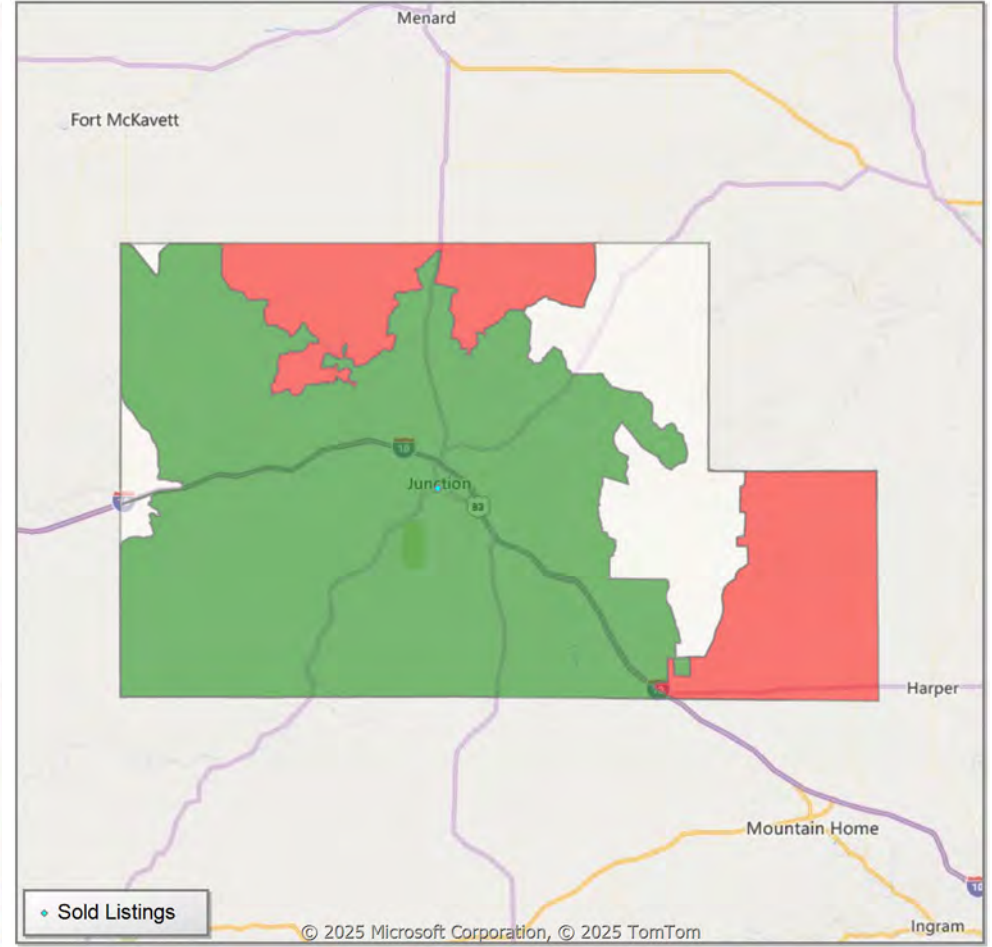


**Comparison By Zip Code\* in Kimble County**

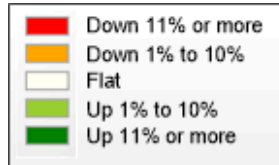
**Residential\*\* Closed Sales  
YoY Percentage Change**



**Residential\*\* Avg Close Price Per SqFt  
YoY Percentage Change**

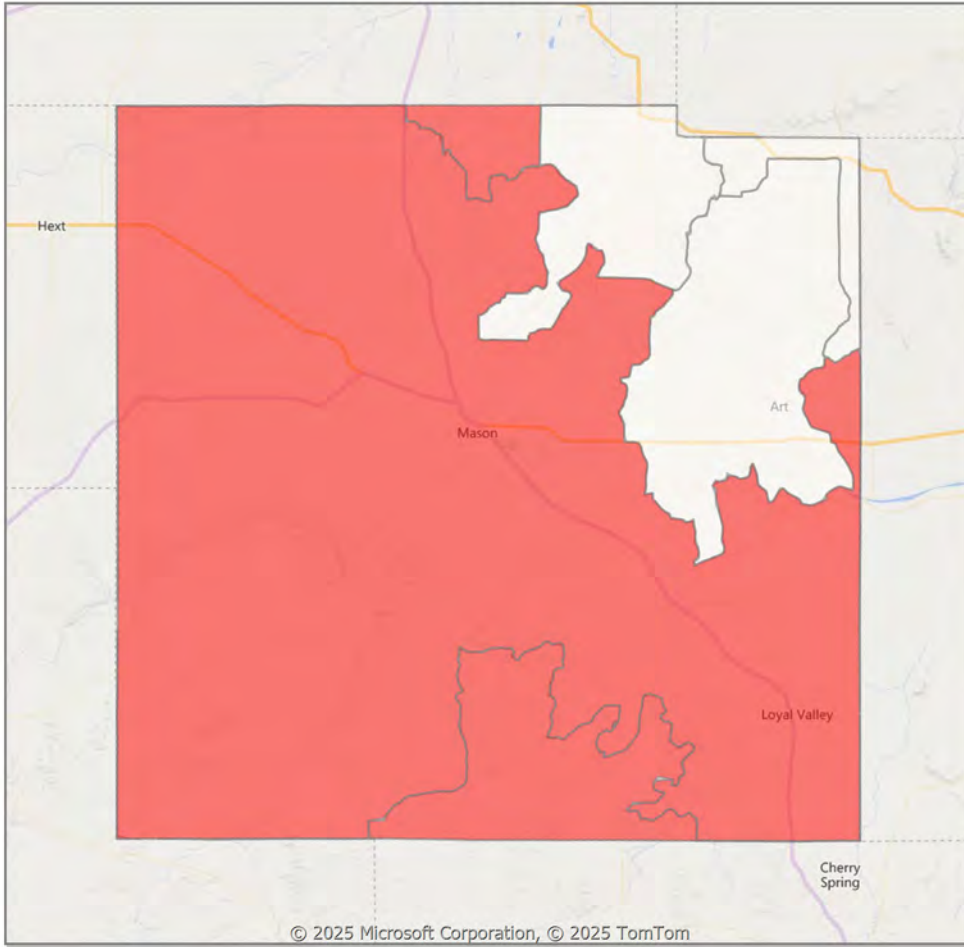


\* US Census Zip Code Tabulation Area  
\*\* Residential includes Single Family, Condominium and Townhouse.

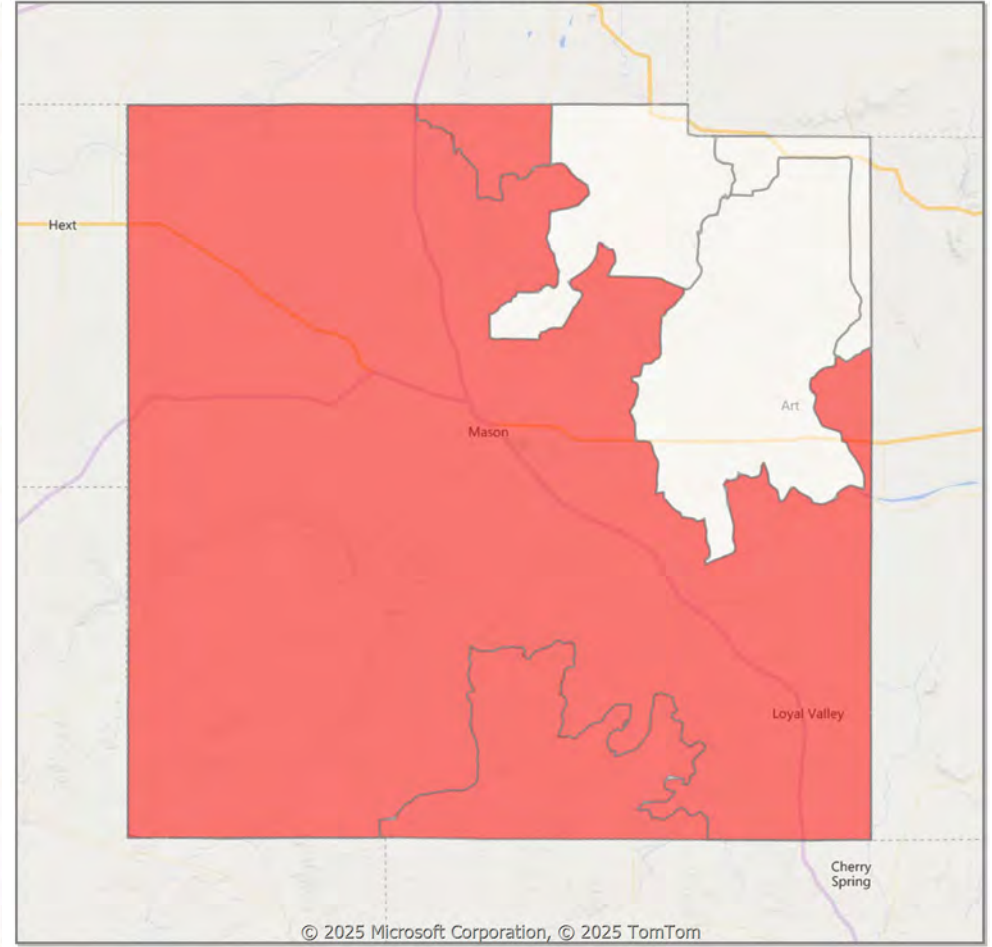


**Comparison By Zip Code\* in Mason County**

**Residential\*\* Closed Sales  
YoY Percentage Change**

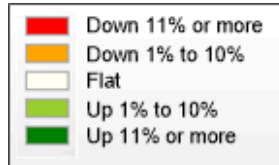


**Residential\*\* Avg Close Price Per SqFt  
YoY Percentage Change**



\* US Census Zip Code Tabulation Area

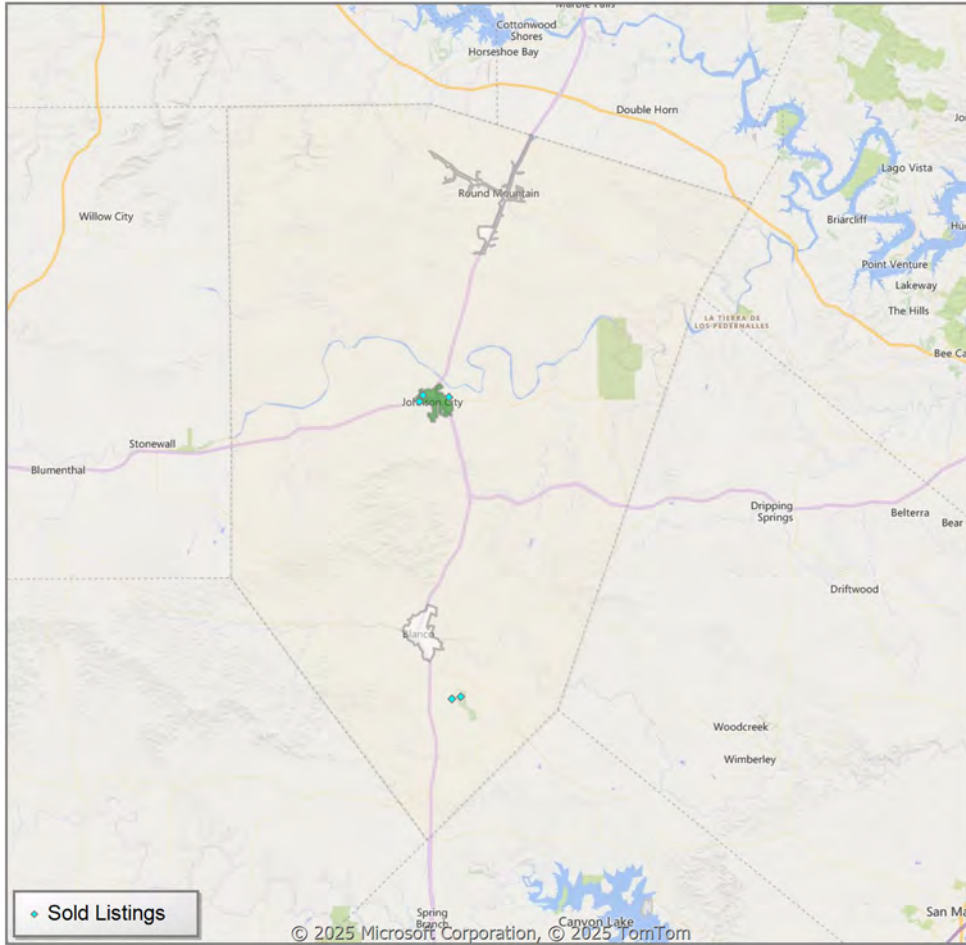
\*\* Residential includes Single Family, Condominium and Townhouse.



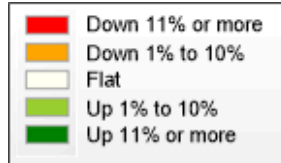
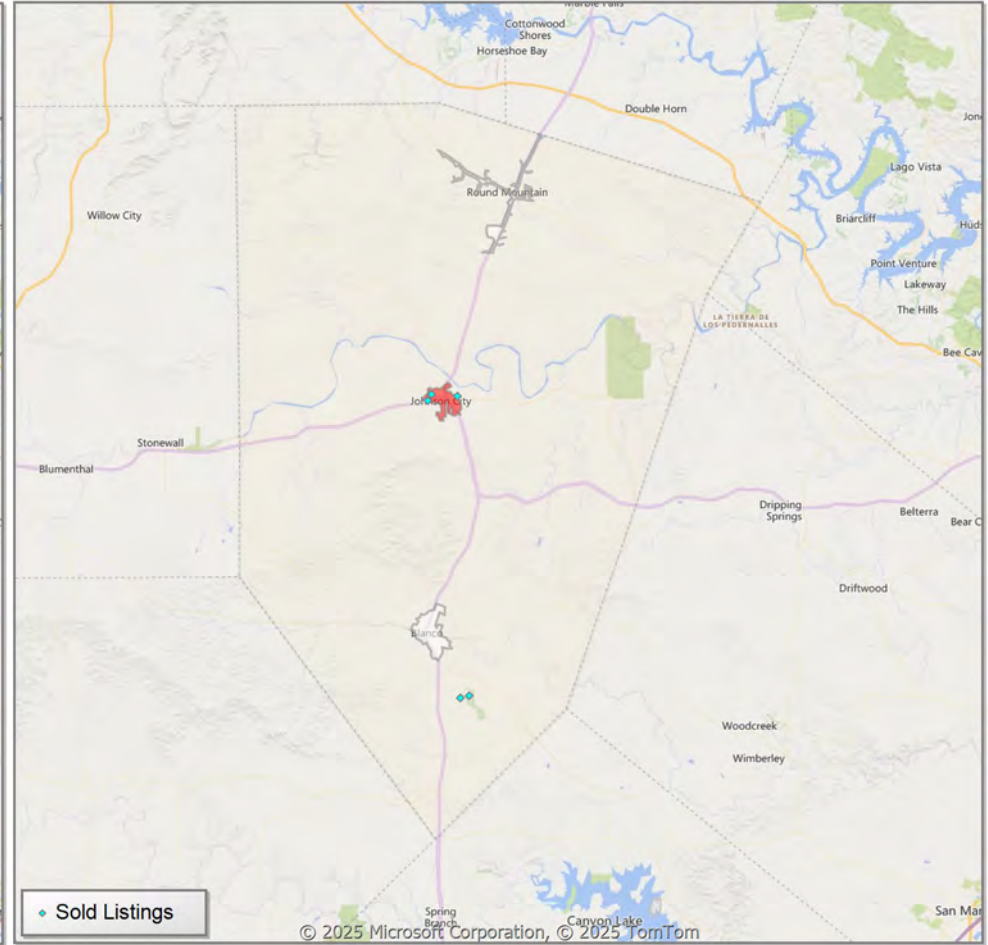


**Comparison By Local Market Area\* in Blanco County**

**Residential\*\* Closed Sales  
YoY Percentage Change**



**Residential\*\* Avg Close Price Per SqFt  
YoY Percentage Change**

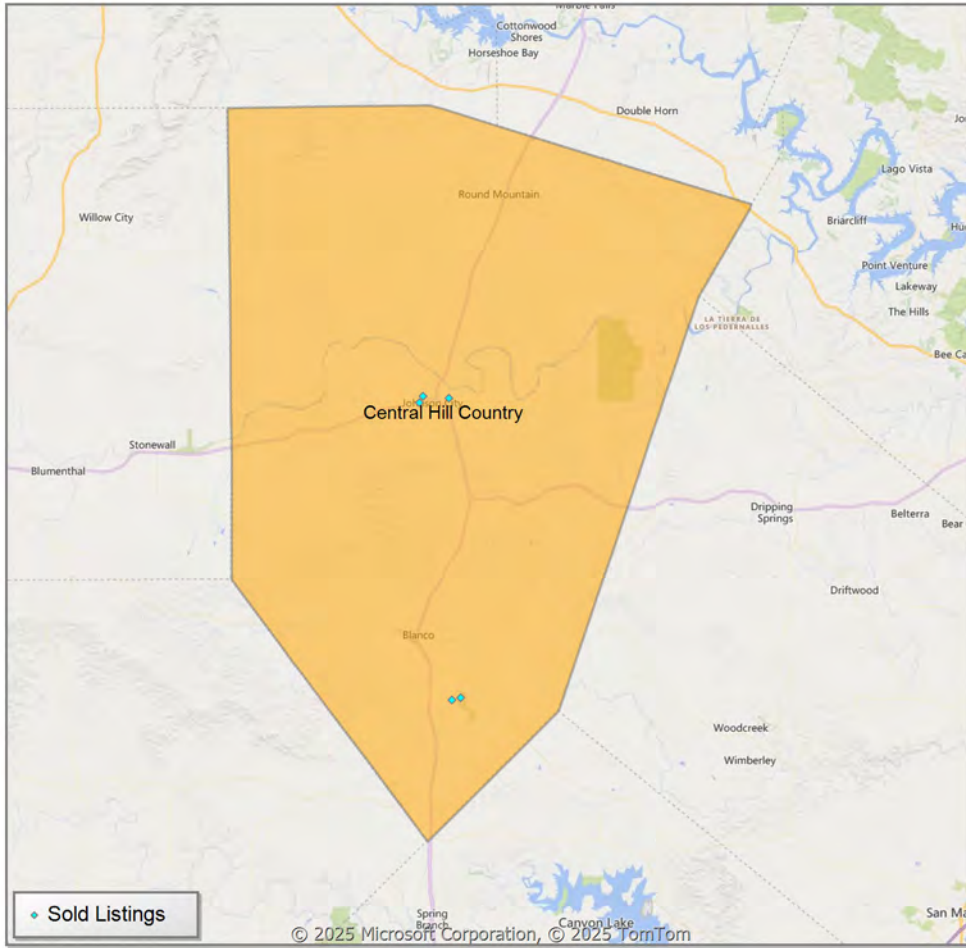


\* Census Place Group

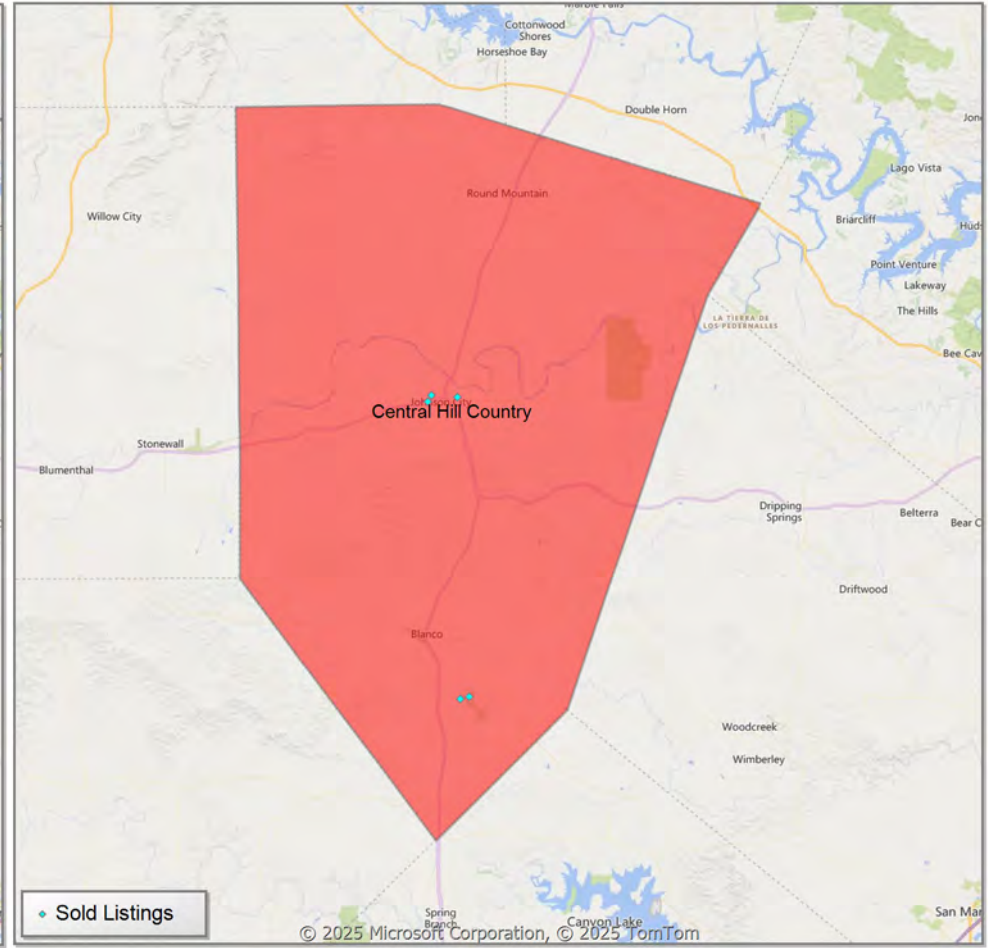
\*\* Residential includes Single Family, Condominium and Townhouse.

**Comparison By Local Market Area\* in Blanco County**

**Residential\*\* Closed Sales  
YoY Percentage Change**



**Residential\*\* Avg Close Price Per SqFt  
YoY Percentage Change**



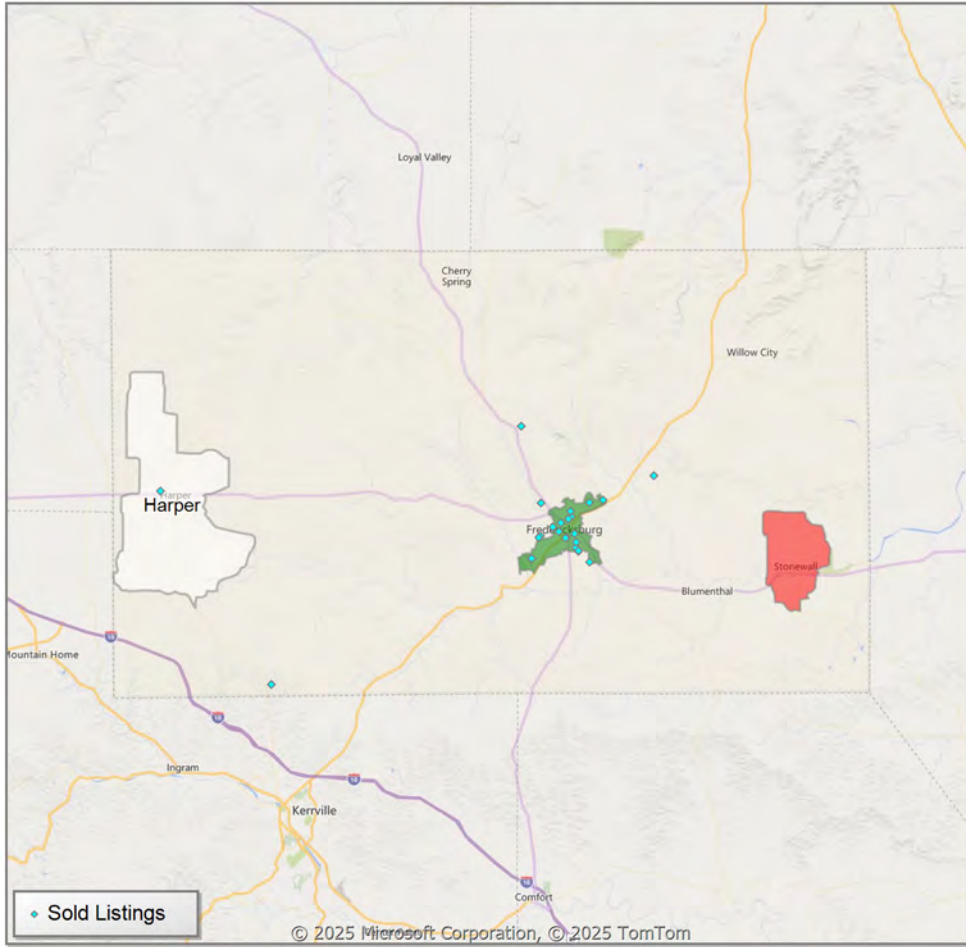
\* Custom Defined Market

\*\* Residential includes Single Family, Condominium and Townhouse.

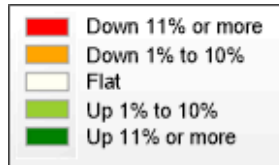
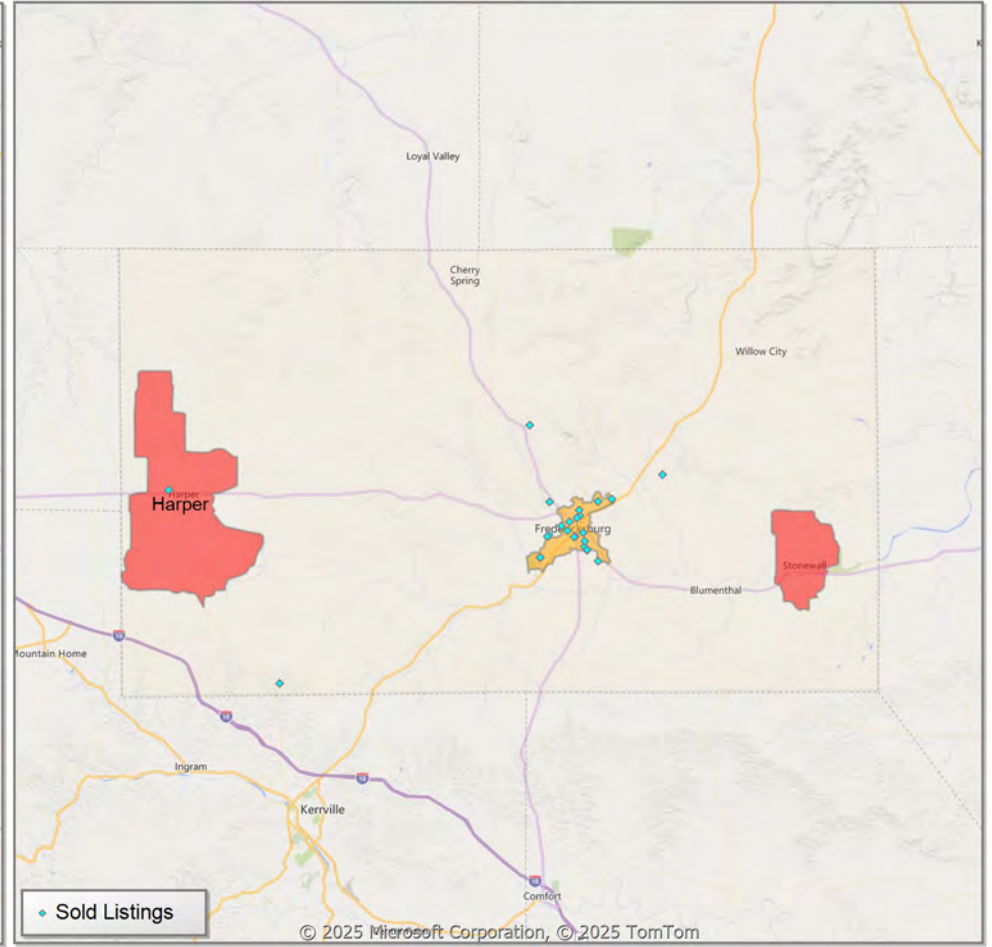


**Comparison By Local Market Area\* in Gillespie County**

**Residential\*\* Closed Sales  
YoY Percentage Change**



**Residential\*\* Avg Close Price Per SqFt  
YoY Percentage Change**

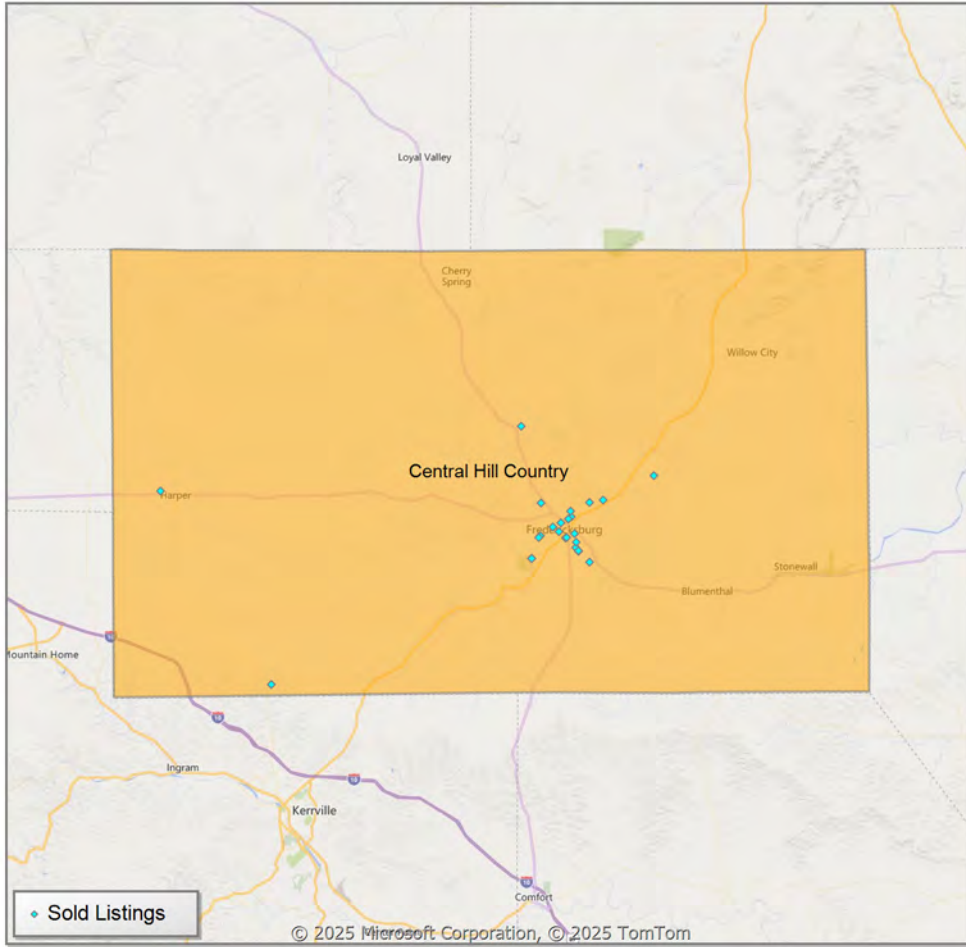


\* Census Place Group

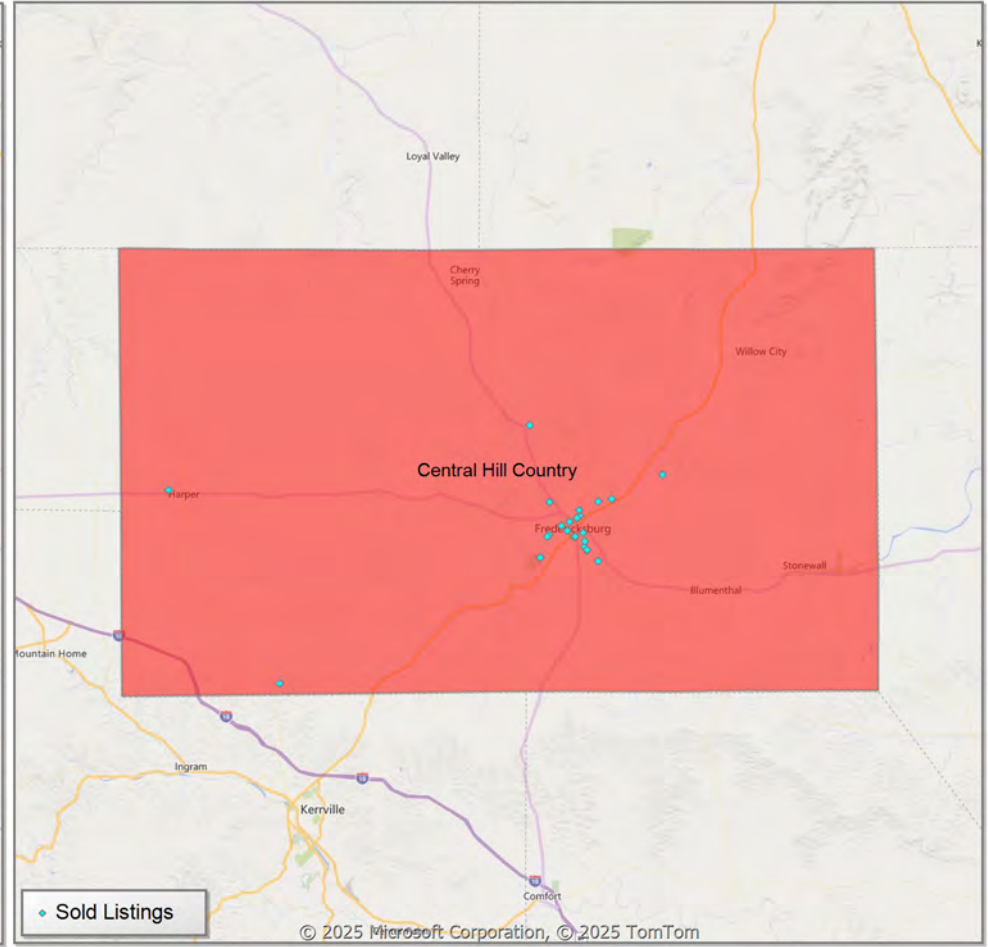
\*\* Residential includes Single Family, Condominium and Townhouse.

**Comparison By Local Market Area\* in Gillespie County**

**Residential\*\* Closed Sales  
YoY Percentage Change**



**Residential\*\* Avg Close Price Per SqFt  
YoY Percentage Change**

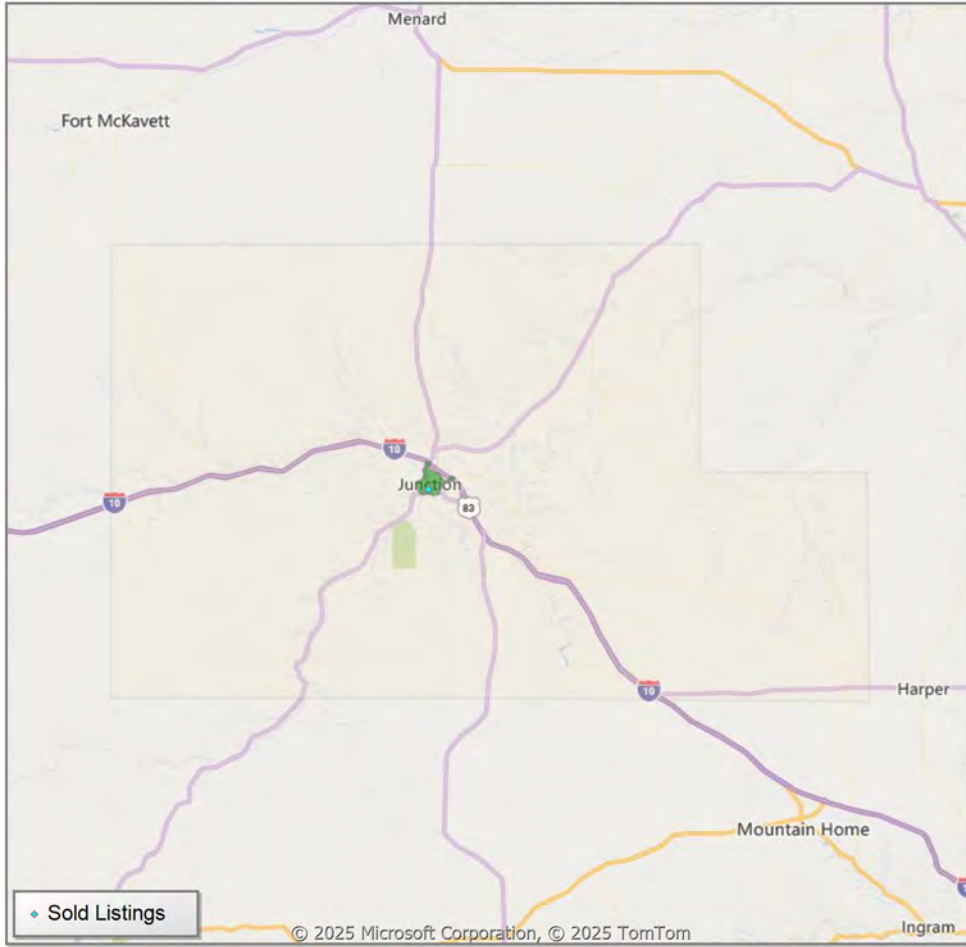


\* Custom Defined Market

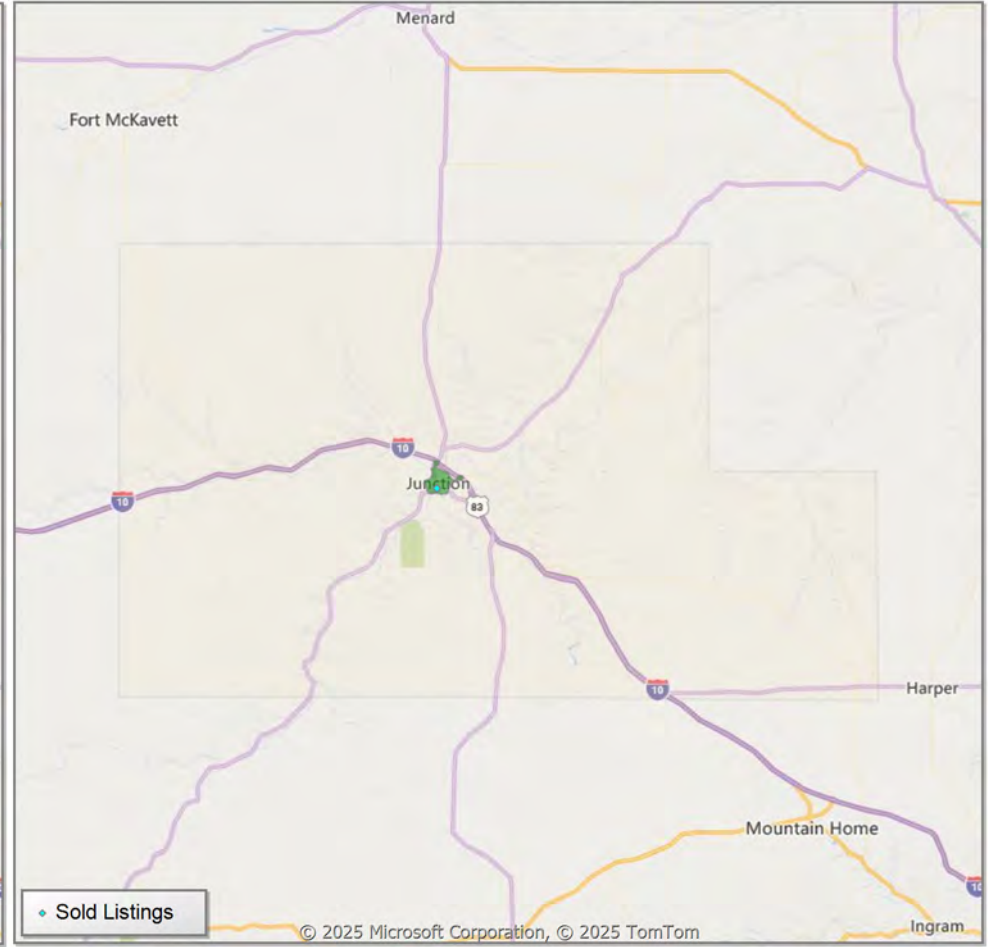
\*\* Residential includes Single Family, Condominium and Townhouse.

**Comparison By Local Market Area\* in Kimble County**

**Residential\*\* Closed Sales  
YoY Percentage Change**



**Residential\*\* Avg Close Price Per SqFt  
YoY Percentage Change**



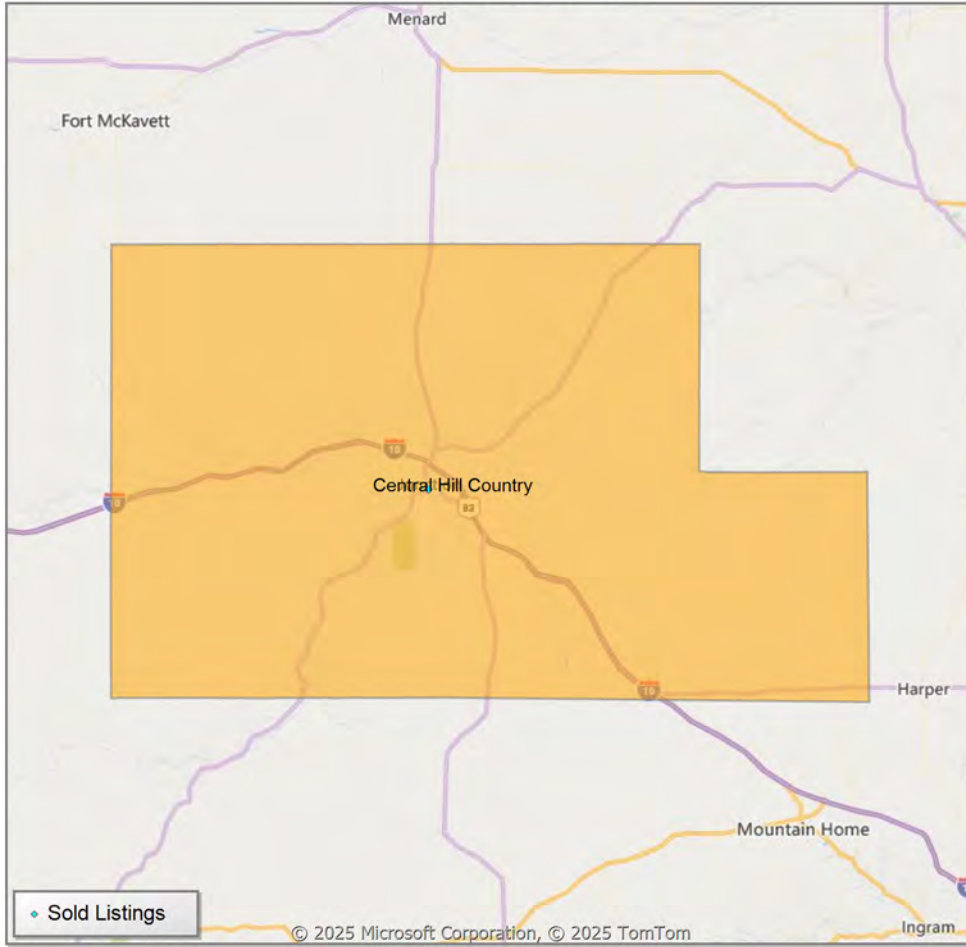
\* Census Place Group

\*\* Residential includes Single Family, Condominium and Townhouse.

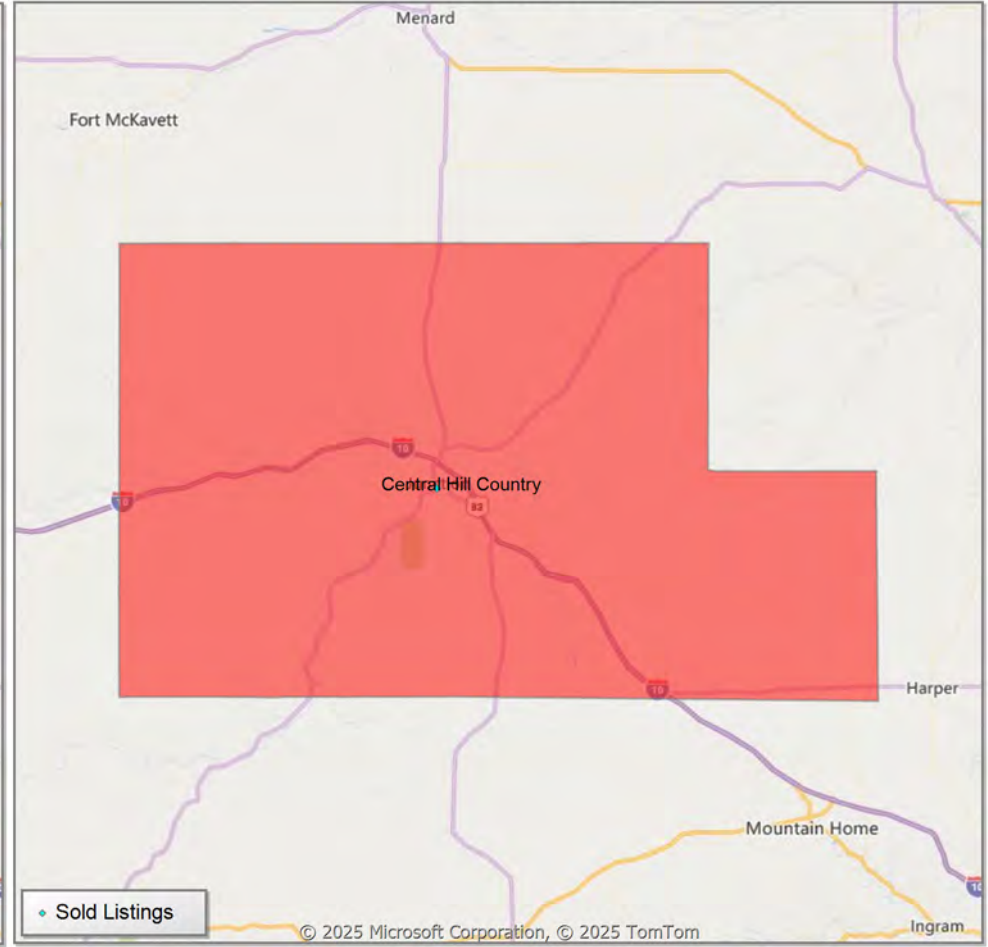


**Comparison By Local Market Area\* in Kimble County**

**Residential\*\* Closed Sales  
YoY Percentage Change**



**Residential\*\* Avg Close Price Per SqFt  
YoY Percentage Change**

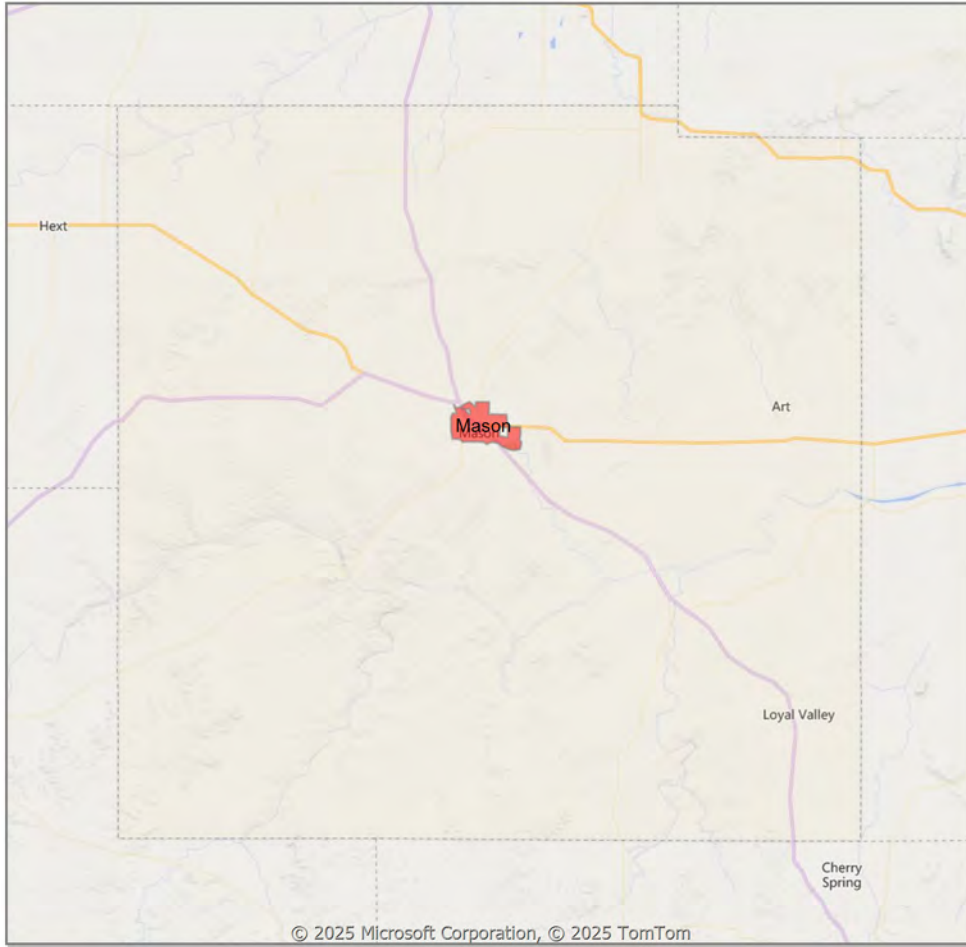


\* Custom Defined Market

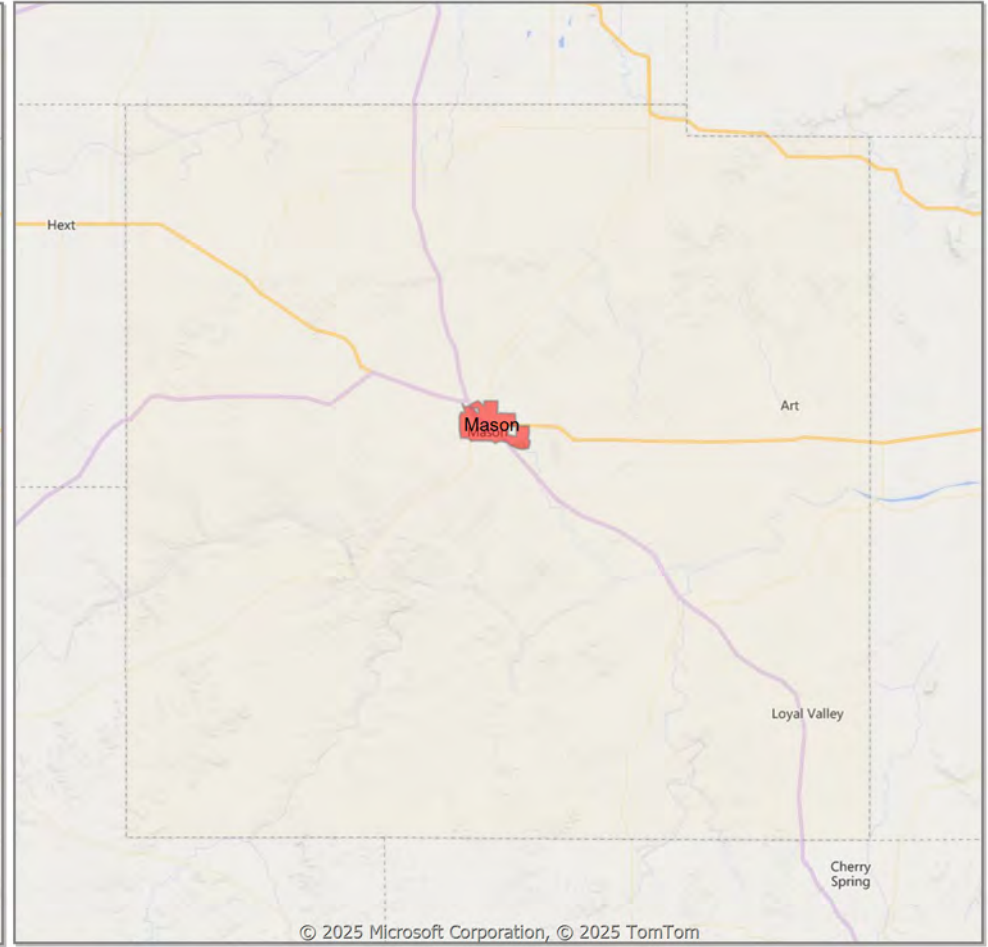
\*\* Residential includes Single Family, Condominium and Townhouse.

**Comparison By Local Market Area\* in Mason County**

**Residential\*\* Closed Sales  
YoY Percentage Change**



**Residential\*\* Avg Close Price Per SqFt  
YoY Percentage Change**



\* Census Place Group

\*\* Residential includes Single Family, Condominium and Townhouse.

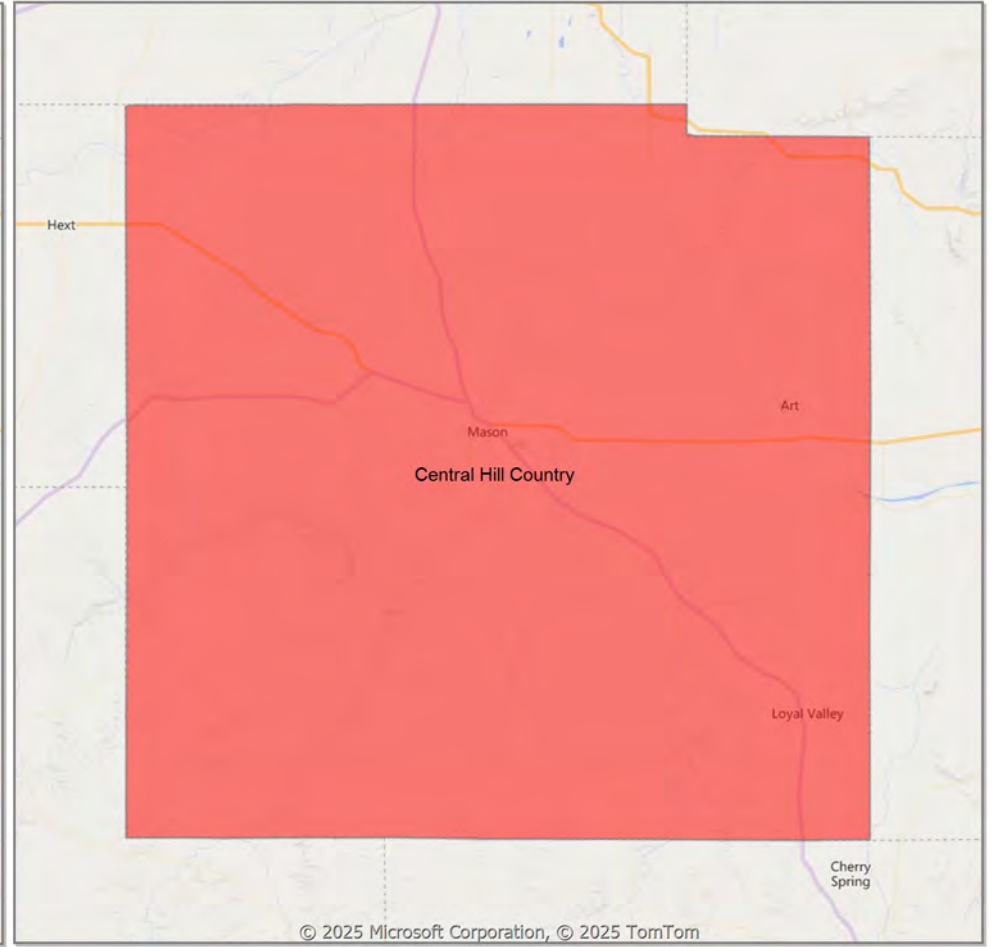


**Comparison By Local Market Area\* in Mason County**

**Residential\*\* Closed Sales  
YoY Percentage Change**



**Residential\*\* Avg Close Price Per SqFt  
YoY Percentage Change**



\* Custom Defined Market

\*\* Residential includes Single Family, Condominium and Townhouse.

Market Analysis By Local Market Area\*: Blanco

Property Type	Closed Sales**	YoY%	Dollar Volume	YoY%	Average Price	YoY%	Median Price	YoY%	Price/Sqft	YoY%	DOM	New Listings	Active Listings	Pending Sales	Months Inventory	Close To OLP
<b>All(New and Existing)</b>																
Residential (SF/COND/TH)	-	0.0%	-	0.0%	-	0.0%	-	0.0%	-	0.0%	-	1	10	1	6.7	0.0%
YTD:	-	0.0%	-	0.0%	-	0.0%	-	0.0%	-	0.0%	-	1	10	1		0.0%
Single Family	-	0.0%	-	0.0%	-	0.0%	-	0.0%	-	0.0%	-	1	10	1	6.7	0.0%
YTD:	-	0.0%	-	0.0%	-	0.0%	-	0.0%	-	0.0%	-	1	10	1		0.0%
Townhouse	-	0.0%	-	0.0%	-	0.0%	-	0.0%	-	0.0%	-	-	-	-	-	0.0%
YTD:	-	0.0%	-	0.0%	-	0.0%	-	0.0%	-	0.0%	-	-	-	-	-	0.0%
Condominium	-	0.0%	-	0.0%	-	0.0%	-	0.0%	-	0.0%	-	-	-	-	-	0.0%
YTD:	-	0.0%	-	0.0%	-	0.0%	-	0.0%	-	0.0%	-	-	-	-	-	0.0%
<b>Existing Home</b>																
Residential (SF/COND/TH)	-	0.0%	-	0.0%	-	0.0%	-	0.0%	-	0.0%	-	1	10	1	7.5	0.0%
YTD:	-	0.0%	-	0.0%	-	0.0%	-	0.0%	-	0.0%	-	1	10	1		0.0%
Single Family	-	0.0%	-	0.0%	-	0.0%	-	0.0%	-	0.0%	-	1	10	1	7.5	0.0%
YTD:	-	0.0%	-	0.0%	-	0.0%	-	0.0%	-	0.0%	-	1	10	1		0.0%
Townhouse	-	0.0%	-	0.0%	-	0.0%	-	0.0%	-	0.0%	-	-	-	-	-	0.0%
YTD:	-	0.0%	-	0.0%	-	0.0%	-	0.0%	-	0.0%	-	-	-	-	-	0.0%
Condominium	-	0.0%	-	0.0%	-	0.0%	-	0.0%	-	0.0%	-	-	-	-	-	0.0%
YTD:	-	0.0%	-	0.0%	-	0.0%	-	0.0%	-	0.0%	-	-	-	-	-	0.0%
<b>New Construction</b>																
Residential (SF/COND/TH)	-	0.0%	-	0.0%	-	0.0%	-	0.0%	-	0.0%	-	-	-	-	-	0.0%
YTD:	-	0.0%	-	0.0%	-	0.0%	-	0.0%	-	0.0%	-	-	-	-	-	0.0%
Single Family	-	0.0%	-	0.0%	-	0.0%	-	0.0%	-	0.0%	-	-	-	-	-	0.0%
YTD:	-	0.0%	-	0.0%	-	0.0%	-	0.0%	-	0.0%	-	-	-	-	-	0.0%
Townhouse	-	0.0%	-	0.0%	-	0.0%	-	0.0%	-	0.0%	-	-	-	-	-	0.0%
YTD:	-	0.0%	-	0.0%	-	0.0%	-	0.0%	-	0.0%	-	-	-	-	-	0.0%
Condominium	-	0.0%	-	0.0%	-	0.0%	-	0.0%	-	0.0%	-	-	-	-	-	0.0%
YTD:	-	0.0%	-	0.0%	-	0.0%	-	0.0%	-	0.0%	-	-	-	-	-	0.0%

\* Local Market Area Code: 91; Type: Census Place Group  
 \*\* Closed Sale counts for most recent 3 months are Preliminary.

Market Analysis By Local Market Area\*: Central Hill Country

Property Type	Closed Sales**	YoY%	Dollar Volume	YoY%	Average Price	YoY%	Median Price	YoY%	Price/Sqft	YoY%	DOM	New Listings	Active Listings	Pending Sales	Months Inventory	Close To OLP
<b>All(New and Existing)</b>																
Residential (SF/COND/TH)	34	-2.9%	\$16,582,778	-22.3%	\$487,729	-20.0%	\$453,495	-11.9%	\$305	-38.6%	127	133	518	37	9.7	90.5%
YTD:	34	-2.9%	\$16,582,778	-22.3%	\$487,729	-20.0%	\$453,495	-11.9%	\$305	-38.6%	127	133	518	37		90.5%
Single Family	34	-2.9%	\$16,582,778	-22.3%	\$487,729	-20.0%	\$453,495	-11.9%	\$305	-38.6%	127	132	508	37	9.6	90.5%
YTD:	34	-2.9%	\$16,582,778	-22.3%	\$487,729	-20.0%	\$453,495	-11.9%	\$305	-38.6%	127	132	508	37		90.5%
Townhouse	-	0.0%	-	0.0%	-	0.0%	-	0.0%	-	0.0%	-	-	-	-	-	0.0%
YTD:	-	0.0%	-	0.0%	-	0.0%	-	0.0%	-	0.0%	-	-	-	-	-	0.0%
Condominium	-	0.0%	-	0.0%	-	0.0%	-	0.0%	-	0.0%	-	1	10	-	-	0.0%
YTD:	-	0.0%	-	0.0%	-	0.0%	-	0.0%	-	0.0%	-	1	10	-	-	0.0%
<b>Existing Home</b>																
Residential (SF/COND/TH)	29	0.0%	\$14,688,212	-20.6%	\$506,490	-20.6%	\$480,000	-6.8%	\$326	-39.5%	137	114	444	28	11.2	89.4%
YTD:	29	0.0%	\$14,688,212	-20.6%	\$506,490	-20.6%	\$480,000	-6.8%	\$326	-39.5%	137	114	444	28		89.4%
Single Family	29	0.0%	\$14,688,212	-20.6%	\$506,490	-20.6%	\$480,000	-6.8%	\$326	-39.5%	137	113	436	28	11.0	89.4%
YTD:	29	0.0%	\$14,688,212	-20.6%	\$506,490	-20.6%	\$480,000	-6.8%	\$326	-39.5%	137	113	436	28		89.4%
Townhouse	-	0.0%	-	0.0%	-	0.0%	-	0.0%	-	0.0%	-	-	-	-	-	0.0%
YTD:	-	0.0%	-	0.0%	-	0.0%	-	0.0%	-	0.0%	-	-	-	-	-	0.0%
Condominium	-	0.0%	-	0.0%	-	0.0%	-	0.0%	-	0.0%	-	1	8	-	-	0.0%
YTD:	-	0.0%	-	0.0%	-	0.0%	-	0.0%	-	0.0%	-	1	8	-	-	0.0%
<b>New Construction</b>																
Residential (SF/COND/TH)	5	-16.7%	\$1,932,088	-32.0%	\$386,418	-18.4%	\$449,990	-6.4%	\$191	-24.1%	71	19	74	9	5.5	95.6%
YTD:	5	-16.7%	\$1,932,088	-32.0%	\$386,418	-18.4%	\$449,990	-6.4%	\$191	-24.1%	71	19	74	9		95.6%
Single Family	5	-16.7%	\$1,932,088	-32.0%	\$386,418	-18.4%	\$449,990	-6.4%	\$191	-24.1%	71	19	72	9	5.4	95.6%
YTD:	5	-16.7%	\$1,932,088	-32.0%	\$386,418	-18.4%	\$449,990	-6.4%	\$191	-24.1%	71	19	72	9		95.6%
Townhouse	-	0.0%	-	0.0%	-	0.0%	-	0.0%	-	0.0%	-	-	-	-	-	0.0%
YTD:	-	0.0%	-	0.0%	-	0.0%	-	0.0%	-	0.0%	-	-	-	-	-	0.0%
Condominium	-	0.0%	-	0.0%	-	0.0%	-	0.0%	-	0.0%	-	-	2	-	-	0.0%
YTD:	-	0.0%	-	0.0%	-	0.0%	-	0.0%	-	0.0%	-	-	2	-	-	0.0%

\* Local Market Area Code: CHC; Type: Custom Defined Market

\*\* Closed Sale counts for most recent 3 months are Preliminary.

Market Analysis By Local Market Area\*: Fredericksburg

Property Type	Closed Sales**	YoY%	Dollar Volume	YoY%	Average Price	YoY%	Median Price	YoY%	Price/Sqft	YoY%	DOM	New Listings	Active Listings	Pending Sales	Months Inventory	Close To OLP
<b>All(New and Existing)</b>																
Residential (SF/COND/TH)	20	17.7%	\$10,942,126	0.6%	\$547,106	-14.5%	\$449,990	-14.3%	\$361	-7.4%	116	49	166	15	6.7	93.5%
YTD:	20	17.7%	\$10,942,126	0.6%	\$547,106	-14.5%	\$449,990	-14.3%	\$361	-7.4%	116	49	166	15		93.5%
Single Family	20	17.7%	\$10,942,126	0.6%	\$547,106	-14.5%	\$449,990	-14.3%	\$361	-7.4%	116	49	163	15	6.6	93.5%
YTD:	20	17.7%	\$10,942,126	0.6%	\$547,106	-14.5%	\$449,990	-14.3%	\$361	-7.4%	116	49	163	15		93.5%
Townhouse	-	0.0%	-	0.0%	-	0.0%	-	0.0%	-	0.0%	-	-	-	-	-	0.0%
YTD:	-	0.0%	-	0.0%	-	0.0%	-	0.0%	-	0.0%	-	-	-	-	-	0.0%
Condominium	-	0.0%	-	0.0%	-	0.0%	-	0.0%	-	0.0%	-	-	3	-	-	0.0%
YTD:	-	0.0%	-	0.0%	-	0.0%	-	0.0%	-	0.0%	-	-	3	-	-	0.0%
<b>Existing Home</b>																
Residential (SF/COND/TH)	15	-6.3%	\$9,067,427	-12.8%	\$604,495	-6.9%	\$510,000	-4.2%	\$422	6.1%	132	44	151	9	9.6	92.7%
YTD:	15	-6.3%	\$9,067,427	-12.8%	\$604,495	-6.9%	\$510,000	-4.2%	\$422	6.1%	132	44	151	9		92.7%
Single Family	15	-6.3%	\$9,067,427	-12.8%	\$604,495	-6.9%	\$510,000	-4.2%	\$422	6.1%	132	44	149	9	9.5	92.7%
YTD:	15	-6.3%	\$9,067,427	-12.8%	\$604,495	-6.9%	\$510,000	-4.2%	\$422	6.1%	132	44	149	9		92.7%
Townhouse	-	0.0%	-	0.0%	-	0.0%	-	0.0%	-	0.0%	-	-	-	-	-	0.0%
YTD:	-	0.0%	-	0.0%	-	0.0%	-	0.0%	-	0.0%	-	-	-	-	-	0.0%
Condominium	-	0.0%	-	0.0%	-	0.0%	-	0.0%	-	0.0%	-	-	2	-	-	0.0%
YTD:	-	0.0%	-	0.0%	-	0.0%	-	0.0%	-	0.0%	-	-	2	-	-	0.0%
<b>New Construction</b>																
Residential (SF/COND/TH)	5	400.0%	\$1,932,088	302.1%	\$386,418	-19.6%	\$449,990	-6.3%	\$191	-29.3%	71	5	15	6	1.6	95.6%
YTD:	5	400.0%	\$1,932,088	302.1%	\$386,418	-19.6%	\$449,990	-6.3%	\$191	-29.3%	71	5	15	6		95.6%
Single Family	5	400.0%	\$1,932,088	302.1%	\$386,418	-19.6%	\$449,990	-6.3%	\$191	-29.3%	71	5	14	6	1.5	95.6%
YTD:	5	400.0%	\$1,932,088	302.1%	\$386,418	-19.6%	\$449,990	-6.3%	\$191	-29.3%	71	5	14	6		95.6%
Townhouse	-	0.0%	-	0.0%	-	0.0%	-	0.0%	-	0.0%	-	-	-	-	-	0.0%
YTD:	-	0.0%	-	0.0%	-	0.0%	-	0.0%	-	0.0%	-	-	-	-	-	0.0%
Condominium	-	0.0%	-	0.0%	-	0.0%	-	0.0%	-	0.0%	-	-	1	-	-	0.0%
YTD:	-	0.0%	-	0.0%	-	0.0%	-	0.0%	-	0.0%	-	-	1	-	-	0.0%

\* Local Market Area Code: 335; Type: Census Place Group  
 \*\* Closed Sale counts for most recent 3 months are Preliminary.

Market Analysis By Local Market Area\*: Harper

Property Type	Closed Sales**	YoY%	Dollar Volume	YoY%	Average Price	YoY%	Median Price	YoY%	Price/Sqft	YoY%	DOM	New Listings	Active Listings	Pending Sales	Months Inventory	Close To OLP
<b>All(New and Existing)</b>																
Residential (SF/COND/TH)	1	0.0%	\$115,000	-64.6%	\$115,000	-64.6%	\$115,000	-64.6%	\$106	-37.3%	74	5	14	1	8.4	0.0%
YTD:	1	0.0%	\$115,000	-64.6%	\$115,000	-64.6%	\$115,000	-64.6%	\$106	-37.3%	74	5	14	1		0.0%
Single Family	1	0.0%	\$115,000	-64.6%	\$115,000	-64.6%	\$115,000	-64.6%	\$106	-37.3%	74	5	14	1	8.4	0.0%
YTD:	1	0.0%	\$115,000	-64.6%	\$115,000	-64.6%	\$115,000	-64.6%	\$106	-37.3%	74	5	14	1		0.0%
Townhouse	-	0.0%	-	0.0%	-	0.0%	-	0.0%	-	0.0%	-	-	-	-	-	0.0%
YTD:	-	0.0%	-	0.0%	-	0.0%	-	0.0%	-	0.0%	-	-	-	-	-	0.0%
Condominium	-	0.0%	-	0.0%	-	0.0%	-	0.0%	-	0.0%	-	-	-	-	-	0.0%
YTD:	-	0.0%	-	0.0%	-	0.0%	-	0.0%	-	0.0%	-	-	-	-	-	0.0%
<b>Existing Home</b>																
Residential (SF/COND/TH)	1	0.0%	\$115,000	-64.6%	\$115,000	-64.6%	\$115,000	-64.6%	\$106	-37.3%	74	4	13	1	7.8	0.0%
YTD:	1	0.0%	\$115,000	-64.6%	\$115,000	-64.6%	\$115,000	-64.6%	\$106	-37.3%	74	4	13	1		0.0%
Single Family	1	0.0%	\$115,000	-64.6%	\$115,000	-64.6%	\$115,000	-64.6%	\$106	-37.3%	74	4	13	1	7.8	0.0%
YTD:	1	0.0%	\$115,000	-64.6%	\$115,000	-64.6%	\$115,000	-64.6%	\$106	-37.3%	74	4	13	1		0.0%
Townhouse	-	0.0%	-	0.0%	-	0.0%	-	0.0%	-	0.0%	-	-	-	-	-	0.0%
YTD:	-	0.0%	-	0.0%	-	0.0%	-	0.0%	-	0.0%	-	-	-	-	-	0.0%
Condominium	-	0.0%	-	0.0%	-	0.0%	-	0.0%	-	0.0%	-	-	-	-	-	0.0%
YTD:	-	0.0%	-	0.0%	-	0.0%	-	0.0%	-	0.0%	-	-	-	-	-	0.0%
<b>New Construction</b>																
Residential (SF/COND/TH)	-	0.0%	-	0.0%	-	0.0%	-	0.0%	-	0.0%	-	1	1	-	-	0.0%
YTD:	-	0.0%	-	0.0%	-	0.0%	-	0.0%	-	0.0%	-	1	1	-		0.0%
Single Family	-	0.0%	-	0.0%	-	0.0%	-	0.0%	-	0.0%	-	1	1	-	-	0.0%
YTD:	-	0.0%	-	0.0%	-	0.0%	-	0.0%	-	0.0%	-	1	1	-		0.0%
Townhouse	-	0.0%	-	0.0%	-	0.0%	-	0.0%	-	0.0%	-	-	-	-	-	0.0%
YTD:	-	0.0%	-	0.0%	-	0.0%	-	0.0%	-	0.0%	-	-	-	-	-	0.0%
Condominium	-	0.0%	-	0.0%	-	0.0%	-	0.0%	-	0.0%	-	-	-	-	-	0.0%
YTD:	-	0.0%	-	0.0%	-	0.0%	-	0.0%	-	0.0%	-	-	-	-	-	0.0%

\* Local Market Area Code: 404; Type: Census Place Group  
 \*\* Closed Sale counts for most recent 3 months are Preliminary.



Market Analysis By Local Market Area\*: Johnson City

Property Type	Closed Sales**	YoY%	Dollar Volume	YoY%	Average Price	YoY%	Median Price	YoY%	Price/Sqft	YoY%	DOM	New Listings	Active Listings	Pending Sales	Months Inventory	Close To OLP
<b>All(New and Existing)</b>																
Residential (SF/COND/TH)	3	200.0%	\$957,400	130.7%	\$319,133	-23.1%	\$285,000	-31.3%	\$209	-29.0%	62	1	19	2	10.4	90.7%
YTD:	3	200.0%	\$957,400	130.7%	\$319,133	-23.1%	\$285,000	-31.3%	\$209	-29.0%	62	1	19	2		90.7%
Single Family	3	200.0%	\$957,400	130.7%	\$319,133	-23.1%	\$285,000	-31.3%	\$209	-29.0%	62	1	19	2	10.4	90.7%
YTD:	3	200.0%	\$957,400	130.7%	\$319,133	-23.1%	\$285,000	-31.3%	\$209	-29.0%	62	1	19	2		90.7%
Townhouse	-	0.0%	-	0.0%	-	0.0%	-	0.0%	-	0.0%	-	-	-	-	-	0.0%
YTD:	-	0.0%	-	0.0%	-	0.0%	-	0.0%	-	0.0%	-	-	-	-	-	0.0%
Condominium	-	0.0%	-	0.0%	-	0.0%	-	0.0%	-	0.0%	-	-	-	-	-	0.0%
YTD:	-	0.0%	-	0.0%	-	0.0%	-	0.0%	-	0.0%	-	-	-	-	-	0.0%
<b>Existing Home</b>																
Residential (SF/COND/TH)	3	200.0%	\$957,400	130.7%	\$319,133	-23.1%	\$285,000	-31.3%	\$209	-29.0%	62	1	18	2	9.8	90.7%
YTD:	3	200.0%	\$957,400	130.7%	\$319,133	-23.1%	\$285,000	-31.3%	\$209	-29.0%	62	1	18	2		90.7%
Single Family	3	200.0%	\$957,400	130.7%	\$319,133	-23.1%	\$285,000	-31.3%	\$209	-29.0%	62	1	18	2	9.8	90.7%
YTD:	3	200.0%	\$957,400	130.7%	\$319,133	-23.1%	\$285,000	-31.3%	\$209	-29.0%	62	1	18	2		90.7%
Townhouse	-	0.0%	-	0.0%	-	0.0%	-	0.0%	-	0.0%	-	-	-	-	-	0.0%
YTD:	-	0.0%	-	0.0%	-	0.0%	-	0.0%	-	0.0%	-	-	-	-	-	0.0%
Condominium	-	0.0%	-	0.0%	-	0.0%	-	0.0%	-	0.0%	-	-	-	-	-	0.0%
YTD:	-	0.0%	-	0.0%	-	0.0%	-	0.0%	-	0.0%	-	-	-	-	-	0.0%
<b>New Construction</b>																
Residential (SF/COND/TH)	-	0.0%	-	0.0%	-	0.0%	-	0.0%	-	0.0%	-	-	1	-	-	0.0%
YTD:	-	0.0%	-	0.0%	-	0.0%	-	0.0%	-	0.0%	-	-	1	-		0.0%
Single Family	-	0.0%	-	0.0%	-	0.0%	-	0.0%	-	0.0%	-	-	1	-	-	0.0%
YTD:	-	0.0%	-	0.0%	-	0.0%	-	0.0%	-	0.0%	-	-	1	-		0.0%
Townhouse	-	0.0%	-	0.0%	-	0.0%	-	0.0%	-	0.0%	-	-	-	-	-	0.0%
YTD:	-	0.0%	-	0.0%	-	0.0%	-	0.0%	-	0.0%	-	-	-	-	-	0.0%
Condominium	-	0.0%	-	0.0%	-	0.0%	-	0.0%	-	0.0%	-	-	-	-	-	0.0%
YTD:	-	0.0%	-	0.0%	-	0.0%	-	0.0%	-	0.0%	-	-	-	-	-	0.0%

\* Local Market Area Code: 484; Type: Census Place Group  
 \*\* Closed Sale counts for most recent 3 months are Preliminary.

Market Analysis By Local Market Area\*: Junction

Property Type	Closed Sales**	YoY%	Dollar Volume	YoY%	Average Price	YoY%	Median Price	YoY%	Price/Sqft	YoY%	DOM	New Listings	Active Listings	Pending Sales	Months Inventory	Close To OLP
<b>All(New and Existing)</b>																
Residential (SF/COND/TH)	1	100.0%	\$150,000	100.0%	\$150,000	100.0%	\$150,000	100.0%	\$107	100.0%	208	-	5	1	6.7	60.2%
<b>YTD:</b>	1	100.0%	\$150,000	100.0%	\$150,000	100.0%	\$150,000	100.0%	\$107	100.0%	208	-	5	1		60.2%
Single Family	1	100.0%	\$150,000	100.0%	\$150,000	100.0%	\$150,000	100.0%	\$107	100.0%	208	-	5	1	6.7	60.2%
<b>YTD:</b>	1	100.0%	\$150,000	100.0%	\$150,000	100.0%	\$150,000	100.0%	\$107	100.0%	208	-	5	1		60.2%
Townhouse	-	0.0%	-	0.0%	-	0.0%	-	0.0%	-	0.0%	-	-	-	-	-	0.0%
<b>YTD:</b>	-	0.0%	-	0.0%	-	0.0%	-	0.0%	-	0.0%	-	-	-	-	-	0.0%
Condominium	-	0.0%	-	0.0%	-	0.0%	-	0.0%	-	0.0%	-	-	-	-	-	0.0%
<b>YTD:</b>	-	0.0%	-	0.0%	-	0.0%	-	0.0%	-	0.0%	-	-	-	-	-	0.0%
<b>Existing Home</b>																
Residential (SF/COND/TH)	1	100.0%	\$150,000	100.0%	\$150,000	100.0%	\$150,000	100.0%	\$107	100.0%	208	-	5	1	6.7	60.2%
<b>YTD:</b>	1	100.0%	\$150,000	100.0%	\$150,000	100.0%	\$150,000	100.0%	\$107	100.0%	208	-	5	1		60.2%
Single Family	1	100.0%	\$150,000	100.0%	\$150,000	100.0%	\$150,000	100.0%	\$107	100.0%	208	-	5	1	6.7	60.2%
<b>YTD:</b>	1	100.0%	\$150,000	100.0%	\$150,000	100.0%	\$150,000	100.0%	\$107	100.0%	208	-	5	1		60.2%
Townhouse	-	0.0%	-	0.0%	-	0.0%	-	0.0%	-	0.0%	-	-	-	-	-	0.0%
<b>YTD:</b>	-	0.0%	-	0.0%	-	0.0%	-	0.0%	-	0.0%	-	-	-	-	-	0.0%
Condominium	-	0.0%	-	0.0%	-	0.0%	-	0.0%	-	0.0%	-	-	-	-	-	0.0%
<b>YTD:</b>	-	0.0%	-	0.0%	-	0.0%	-	0.0%	-	0.0%	-	-	-	-	-	0.0%
<b>New Construction</b>																
Residential (SF/COND/TH)	-	0.0%	-	0.0%	-	0.0%	-	0.0%	-	0.0%	-	-	-	-	-	0.0%
<b>YTD:</b>	-	0.0%	-	0.0%	-	0.0%	-	0.0%	-	0.0%	-	-	-	-	-	0.0%
Single Family	-	0.0%	-	0.0%	-	0.0%	-	0.0%	-	0.0%	-	-	-	-	-	0.0%
<b>YTD:</b>	-	0.0%	-	0.0%	-	0.0%	-	0.0%	-	0.0%	-	-	-	-	-	0.0%
Townhouse	-	0.0%	-	0.0%	-	0.0%	-	0.0%	-	0.0%	-	-	-	-	-	0.0%
<b>YTD:</b>	-	0.0%	-	0.0%	-	0.0%	-	0.0%	-	0.0%	-	-	-	-	-	0.0%
Condominium	-	0.0%	-	0.0%	-	0.0%	-	0.0%	-	0.0%	-	-	-	-	-	0.0%
<b>YTD:</b>	-	0.0%	-	0.0%	-	0.0%	-	0.0%	-	0.0%	-	-	-	-	-	0.0%

\* Local Market Area Code: 490; Type: Census Place Group  
 \*\* Closed Sale counts for most recent 3 months are Preliminary.

Market Analysis By Local Market Area\*: Mason

Property Type	Closed Sales**	YoY%	Dollar Volume	YoY%	Average Price	YoY%	Median Price	YoY%	Price/Sqft	YoY%	DOM	New Listings	Active Listings	Pending Sales	Months Inventory	Close To OLP
<b>All(New and Existing)</b>																
Residential (SF/COND/TH)	-	-100.0%	-	-100.0%	-	-100.0%	-	-100.0%	-	-100.0%	-	6	24	3	19.2	0.0%
YTD:	-	-100.0%	-	-100.0%	-	-100.0%	-	-100.0%	-	-100.0%	-	6	24	3		0.0%
Single Family	-	-100.0%	-	-100.0%	-	-100.0%	-	-100.0%	-	-100.0%	-	6	24	3	19.2	0.0%
YTD:	-	-100.0%	-	-100.0%	-	-100.0%	-	-100.0%	-	-100.0%	-	6	24	3		0.0%
Townhouse	-	0.0%	-	0.0%	-	0.0%	-	0.0%	-	0.0%	-	-	-	-	-	0.0%
YTD:	-	0.0%	-	0.0%	-	0.0%	-	0.0%	-	0.0%	-	-	-	-	-	0.0%
Condominium	-	0.0%	-	0.0%	-	0.0%	-	0.0%	-	0.0%	-	-	-	-	-	0.0%
YTD:	-	0.0%	-	0.0%	-	0.0%	-	0.0%	-	0.0%	-	-	-	-	-	0.0%
<b>Existing Home</b>																
Residential (SF/COND/TH)	-	-100.0%	-	-100.0%	-	-100.0%	-	-100.0%	-	-100.0%	-	6	24	3	19.2	0.0%
YTD:	-	-100.0%	-	-100.0%	-	-100.0%	-	-100.0%	-	-100.0%	-	6	24	3		0.0%
Single Family	-	-100.0%	-	-100.0%	-	-100.0%	-	-100.0%	-	-100.0%	-	6	24	3	19.2	0.0%
YTD:	-	-100.0%	-	-100.0%	-	-100.0%	-	-100.0%	-	-100.0%	-	6	24	3		0.0%
Townhouse	-	0.0%	-	0.0%	-	0.0%	-	0.0%	-	0.0%	-	-	-	-	-	0.0%
YTD:	-	0.0%	-	0.0%	-	0.0%	-	0.0%	-	0.0%	-	-	-	-	-	0.0%
Condominium	-	0.0%	-	0.0%	-	0.0%	-	0.0%	-	0.0%	-	-	-	-	-	0.0%
YTD:	-	0.0%	-	0.0%	-	0.0%	-	0.0%	-	0.0%	-	-	-	-	-	0.0%
<b>New Construction</b>																
Residential (SF/COND/TH)	-	0.0%	-	0.0%	-	0.0%	-	0.0%	-	0.0%	-	-	-	-	-	0.0%
YTD:	-	0.0%	-	0.0%	-	0.0%	-	0.0%	-	0.0%	-	-	-	-	-	0.0%
Single Family	-	0.0%	-	0.0%	-	0.0%	-	0.0%	-	0.0%	-	-	-	-	-	0.0%
YTD:	-	0.0%	-	0.0%	-	0.0%	-	0.0%	-	0.0%	-	-	-	-	-	0.0%
Townhouse	-	0.0%	-	0.0%	-	0.0%	-	0.0%	-	0.0%	-	-	-	-	-	0.0%
YTD:	-	0.0%	-	0.0%	-	0.0%	-	0.0%	-	0.0%	-	-	-	-	-	0.0%
Condominium	-	0.0%	-	0.0%	-	0.0%	-	0.0%	-	0.0%	-	-	-	-	-	0.0%
YTD:	-	0.0%	-	0.0%	-	0.0%	-	0.0%	-	0.0%	-	-	-	-	-	0.0%

\* Local Market Area Code: 620; Type: Census Place Group  
 \*\* Closed Sale counts for most recent 3 months are Preliminary.

Market Analysis By Local Market Area\*: Round Mountain

Property Type	Closed Sales**	YoY%	Dollar Volume	YoY%	Average Price	YoY%	Median Price	YoY%	Price/Sqft	YoY%	DOM	New Listings	Active Listings	Pending Sales	Months Inventory	Close To OLP
<b>All(New and Existing)</b>																
Residential (SF/COND/TH)	-	0.0%	-	0.0%	-	0.0%	-	0.0%	-	0.0%	-	-	-	-	-	0.0%
YTD:	-	0.0%	-	0.0%	-	0.0%	-	0.0%	-	0.0%	-	-	-	-	-	0.0%
Single Family	-	0.0%	-	0.0%	-	0.0%	-	0.0%	-	0.0%	-	-	-	-	-	0.0%
YTD:	-	0.0%	-	0.0%	-	0.0%	-	0.0%	-	0.0%	-	-	-	-	-	0.0%
Townhouse	-	0.0%	-	0.0%	-	0.0%	-	0.0%	-	0.0%	-	-	-	-	-	0.0%
YTD:	-	0.0%	-	0.0%	-	0.0%	-	0.0%	-	0.0%	-	-	-	-	-	0.0%
Condominium	-	0.0%	-	0.0%	-	0.0%	-	0.0%	-	0.0%	-	-	-	-	-	0.0%
YTD:	-	0.0%	-	0.0%	-	0.0%	-	0.0%	-	0.0%	-	-	-	-	-	0.0%
<b>Existing Home</b>																
Residential (SF/COND/TH)	-	0.0%	-	0.0%	-	0.0%	-	0.0%	-	0.0%	-	-	-	-	-	0.0%
YTD:	-	0.0%	-	0.0%	-	0.0%	-	0.0%	-	0.0%	-	-	-	-	-	0.0%
Single Family	-	0.0%	-	0.0%	-	0.0%	-	0.0%	-	0.0%	-	-	-	-	-	0.0%
YTD:	-	0.0%	-	0.0%	-	0.0%	-	0.0%	-	0.0%	-	-	-	-	-	0.0%
Townhouse	-	0.0%	-	0.0%	-	0.0%	-	0.0%	-	0.0%	-	-	-	-	-	0.0%
YTD:	-	0.0%	-	0.0%	-	0.0%	-	0.0%	-	0.0%	-	-	-	-	-	0.0%
Condominium	-	0.0%	-	0.0%	-	0.0%	-	0.0%	-	0.0%	-	-	-	-	-	0.0%
YTD:	-	0.0%	-	0.0%	-	0.0%	-	0.0%	-	0.0%	-	-	-	-	-	0.0%
<b>New Construction</b>																
Residential (SF/COND/TH)	-	0.0%	-	0.0%	-	0.0%	-	0.0%	-	0.0%	-	-	-	-	-	0.0%
YTD:	-	0.0%	-	0.0%	-	0.0%	-	0.0%	-	0.0%	-	-	-	-	-	0.0%
Single Family	-	0.0%	-	0.0%	-	0.0%	-	0.0%	-	0.0%	-	-	-	-	-	0.0%
YTD:	-	0.0%	-	0.0%	-	0.0%	-	0.0%	-	0.0%	-	-	-	-	-	0.0%
Townhouse	-	0.0%	-	0.0%	-	0.0%	-	0.0%	-	0.0%	-	-	-	-	-	0.0%
YTD:	-	0.0%	-	0.0%	-	0.0%	-	0.0%	-	0.0%	-	-	-	-	-	0.0%
Condominium	-	0.0%	-	0.0%	-	0.0%	-	0.0%	-	0.0%	-	-	-	-	-	0.0%
YTD:	-	0.0%	-	0.0%	-	0.0%	-	0.0%	-	0.0%	-	-	-	-	-	0.0%

\* Local Market Area Code: 871; Type: Census Place Group  
 \*\* Closed Sale counts for most recent 3 months are Preliminary.



Market Analysis By Local Market Area\*: Stonewall

Property Type	Closed Sales**	YoY%	Dollar Volume	YoY%	Average Price	YoY%	Median Price	YoY%	Price/Sqft	YoY%	DOM	New Listings	Active Listings	Pending Sales	Months Inventory	Close To OLP
<b>All(New and Existing)</b>																
Residential (SF/COND/TH)	-	-100.0%	-	-100.0%	-	-100.0%	-	-100.0%	-	-100.0%	-	1	2	-	6.0	0.0%
YTD:	-	-100.0%	-	-100.0%	-	-100.0%	-	-100.0%	-	-100.0%	-	1	2	-		0.0%
Single Family	-	-100.0%	-	-100.0%	-	-100.0%	-	-100.0%	-	-100.0%	-	1	2	-	6.0	0.0%
YTD:	-	-100.0%	-	-100.0%	-	-100.0%	-	-100.0%	-	-100.0%	-	1	2	-		0.0%
Townhouse	-	0.0%	-	0.0%	-	0.0%	-	0.0%	-	0.0%	-	-	-	-	-	0.0%
YTD:	-	0.0%	-	0.0%	-	0.0%	-	0.0%	-	0.0%	-	-	-	-	-	0.0%
Condominium	-	0.0%	-	0.0%	-	0.0%	-	0.0%	-	0.0%	-	-	-	-	-	0.0%
YTD:	-	0.0%	-	0.0%	-	0.0%	-	0.0%	-	0.0%	-	-	-	-	-	0.0%
<b>Existing Home</b>																
Residential (SF/COND/TH)	-	-100.0%	-	-100.0%	-	-100.0%	-	-100.0%	-	-100.0%	-	1	2	-	6.0	0.0%
YTD:	-	-100.0%	-	-100.0%	-	-100.0%	-	-100.0%	-	-100.0%	-	1	2	-		0.0%
Single Family	-	-100.0%	-	-100.0%	-	-100.0%	-	-100.0%	-	-100.0%	-	1	2	-	6.0	0.0%
YTD:	-	-100.0%	-	-100.0%	-	-100.0%	-	-100.0%	-	-100.0%	-	1	2	-		0.0%
Townhouse	-	0.0%	-	0.0%	-	0.0%	-	0.0%	-	0.0%	-	-	-	-	-	0.0%
YTD:	-	0.0%	-	0.0%	-	0.0%	-	0.0%	-	0.0%	-	-	-	-	-	0.0%
Condominium	-	0.0%	-	0.0%	-	0.0%	-	0.0%	-	0.0%	-	-	-	-	-	0.0%
YTD:	-	0.0%	-	0.0%	-	0.0%	-	0.0%	-	0.0%	-	-	-	-	-	0.0%
<b>New Construction</b>																
Residential (SF/COND/TH)	-	0.0%	-	0.0%	-	0.0%	-	0.0%	-	0.0%	-	-	-	-	-	0.0%
YTD:	-	0.0%	-	0.0%	-	0.0%	-	0.0%	-	0.0%	-	-	-	-	-	0.0%
Single Family	-	0.0%	-	0.0%	-	0.0%	-	0.0%	-	0.0%	-	-	-	-	-	0.0%
YTD:	-	0.0%	-	0.0%	-	0.0%	-	0.0%	-	0.0%	-	-	-	-	-	0.0%
Townhouse	-	0.0%	-	0.0%	-	0.0%	-	0.0%	-	0.0%	-	-	-	-	-	0.0%
YTD:	-	0.0%	-	0.0%	-	0.0%	-	0.0%	-	0.0%	-	-	-	-	-	0.0%
Condominium	-	0.0%	-	0.0%	-	0.0%	-	0.0%	-	0.0%	-	-	-	-	-	0.0%
YTD:	-	0.0%	-	0.0%	-	0.0%	-	0.0%	-	0.0%	-	-	-	-	-	0.0%

\* Local Market Area Code: 966; Type: Census Place Group  
 \*\* Closed Sale counts for most recent 3 months are Preliminary.

