

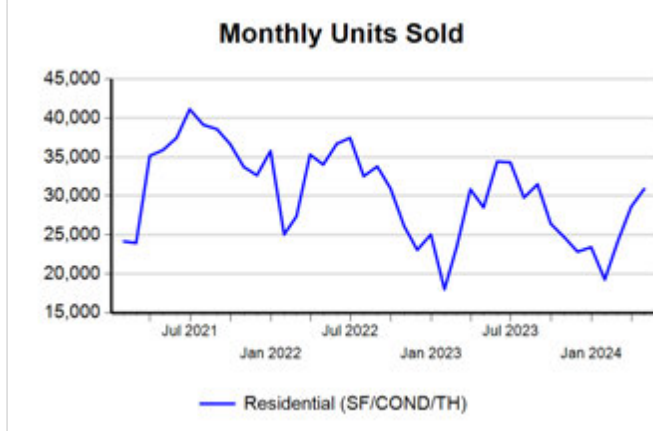
Market Analysis By State: Texas

Property Type	Closed Sales*	YoY%	Dollar Volume	YoY%	Average Price	YoY%	Median Price	YoY%	Price/Sqft	YoY%	DOM	New Listings	Active Listings	Pending Sales	Months Inventory	Close To OLP
<b>All(New and Existing)</b>																
Residential (SF/COND/TH)	30,918	8.4%	\$13,378,287,937	13.1%	\$432,702	4.4%	\$341,900	1.5%	\$196	3.3%	57	52,575	110,344	32,507	4.0	95.7%
YTD:	102,884	1.9%	\$42,504,426,476	5.3%	\$413,130	3.4%	\$335,000	1.5%	\$190	2.8%	63	185,103	101,399	118,036		94.9%
Single Family	29,038	8.6%	\$12,681,770,572	13.4%	\$436,730	4.4%	\$345,000	1.8%	\$193	3.3%	57	48,803	101,350	30,592	3.9	95.7%
YTD:	96,942	2.3%	\$40,410,672,140	5.7%	\$416,854	3.3%	\$336,000	1.8%	\$188	2.9%	63	171,345	93,441	111,237		94.9%
Townhouse	808	-1.7%	\$302,883,302	1.7%	\$374,856	3.5%	\$342,375	0.8%	\$201	2.4%	56	1,548	3,087	920	4.3	96.0%
YTD:	2,691	-2.6%	\$966,899,033	0.3%	\$359,308	3.0%	\$328,000	-0.2%	\$196	2.2%	57	5,564	2,808	3,172		95.7%
Condominium	1,041	5.7%	\$382,824,882	9.4%	\$367,747	3.6%	\$270,500	2.1%	\$278	2.7%	59	2,224	5,907	995	6.5	94.3%
YTD:	3,201	-8.3%	\$1,109,354,268	-6.2%	\$346,565	2.3%	\$260,000	4.0%	\$266	3.0%	62	8,194	5,149	3,627		93.8%
<b>Existing Home</b>																
Residential (SF/COND/TH)	23,495	9.2%	\$10,182,251,893	16.5%	\$433,380	6.7%	\$335,000	4.1%	\$197	4.4%	50	41,228	81,315	23,796	4.0	95.6%
YTD:	75,431	0.6%	\$31,032,548,579	6.6%	\$411,403	5.9%	\$325,000	3.2%	\$190	4.3%	56	141,241	72,499	85,220		94.8%
Single Family	21,860	9.4%	\$9,589,184,538	16.9%	\$438,664	6.8%	\$340,000	4.6%	\$193	4.5%	49	37,970	73,859	22,179	3.9	95.7%
YTD:	70,327	1.0%	\$29,291,285,033	7.1%	\$416,501	6.0%	\$329,000	4.4%	\$187	4.5%	56	129,606	66,029	79,483		94.8%
Townhouse	618	2.3%	\$228,320,671	6.6%	\$369,451	4.2%	\$324,000	-1.8%	\$197	3.2%	45	1,191	2,155	674	4.0	96.2%
YTD:	2,024	-2.9%	\$705,573,068	1.2%	\$348,603	4.3%	\$308,000	1.7%	\$190	3.6%	47	4,102	1,896	2,310		95.8%
Condominium	991	6.7%	\$355,809,370	11.1%	\$359,041	4.2%	\$260,000	2.0%	\$274	3.5%	57	2,067	5,301	943	6.2	94.3%
YTD:	3,032	-7.4%	\$1,018,929,647	-4.4%	\$336,059	3.2%	\$250,000	4.2%	\$263	3.8%	61	7,533	4,573	3,427		93.8%
<b>New Construction</b>																
Residential (SF/COND/TH)	7,415	5.5%	\$3,192,471,183	3.3%	\$430,542	-2.1%	\$355,150	-5.3%	\$194	-0.2%	79	11,347	29,029	8,711	4.1	95.8%
YTD:	27,425	5.4%	\$11,460,354,335	1.9%	\$417,880	-3.3%	\$350,662	-4.0%	\$190	-1.4%	80	43,862	28,899	32,816		95.1%
Single Family	7,171	6.2%	\$3,089,250,510	3.8%	\$430,798	-2.3%	\$354,994	-5.2%	\$192	0.0%	79	10,833	27,491	8,413	4.0	95.8%
YTD:	26,586	5.8%	\$11,107,312,244	2.3%	\$417,788	-3.3%	\$350,000	-4.1%	\$188	-1.2%	80	41,739	27,411	31,754		95.1%
Townhouse	190	-12.8%	\$74,558,541	-10.8%	\$392,413	2.4%	\$375,000	4.2%	\$217	1.6%	92	357	932	246	5.2	95.6%
YTD:	664	-2.2%	\$260,207,493	-2.4%	\$391,879	-0.2%	\$369,584	-2.7%	\$212	-1.4%	88	1,462	912	862		95.1%
Condominium	49	-12.5%	\$26,534,217	-10.4%	\$541,515	2.4%	\$438,950	-12.2%	\$352	-4.1%	85	157	606	52	10.6	95.2%
YTD:	168	-22.9%	\$89,846,037	-22.9%	\$534,798	0.1%	\$463,565	-3.4%	\$330	-3.4%	87	661	575	200		93.9%

\* Closed Sale counts for most recent 3 months are Preliminary.

Trend Analysis By State: Texas

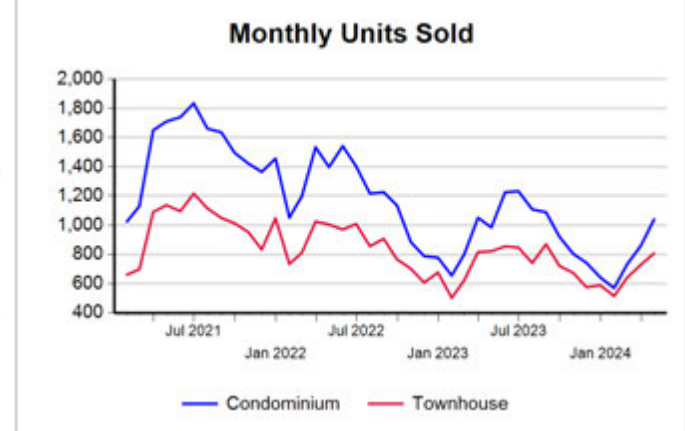
Residential, All (New and Existing)



Single Family, New vs. Existing



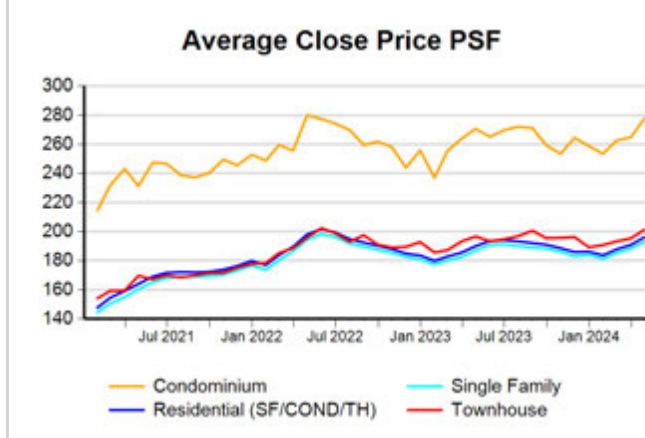
COND/TH, All (New and Existing)



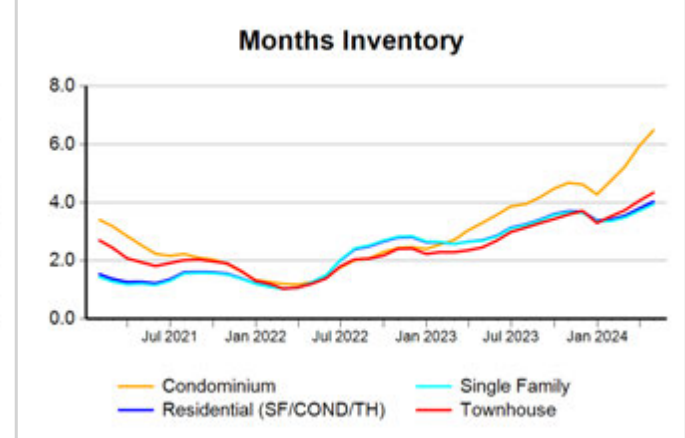
All (New and Existing) Construction



All (New and Existing) Construction



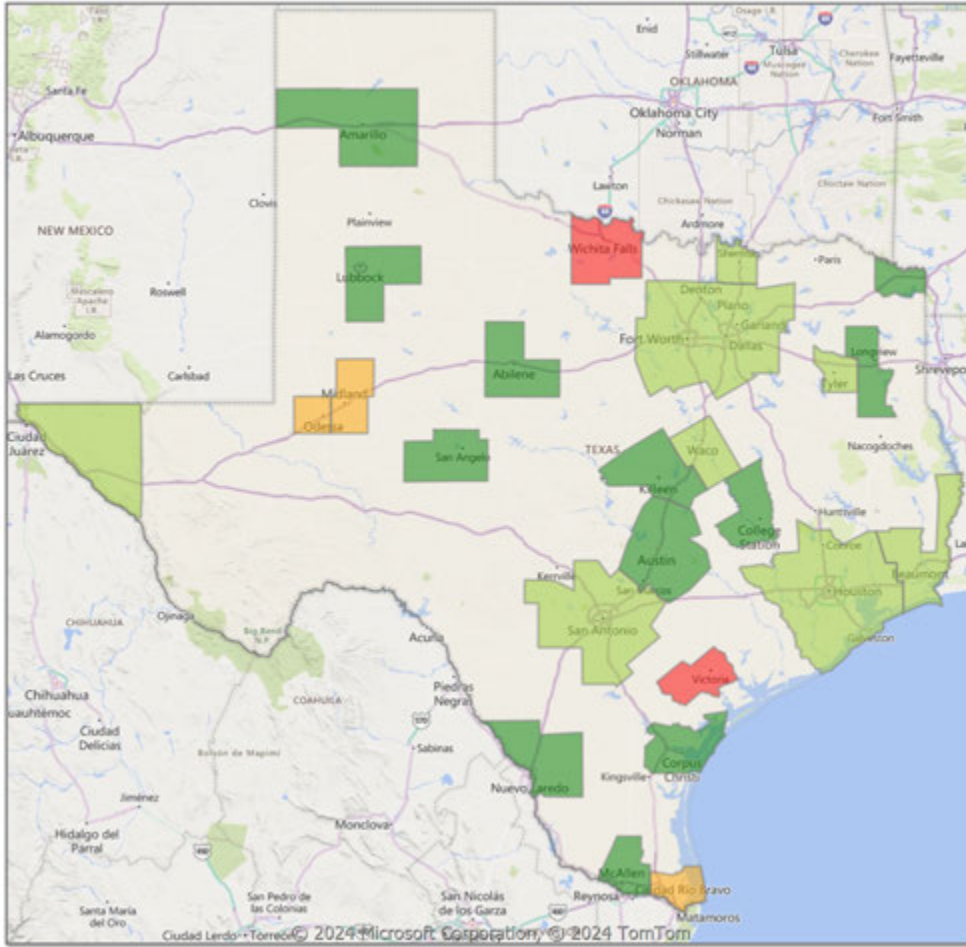
All (New and Existing) Construction



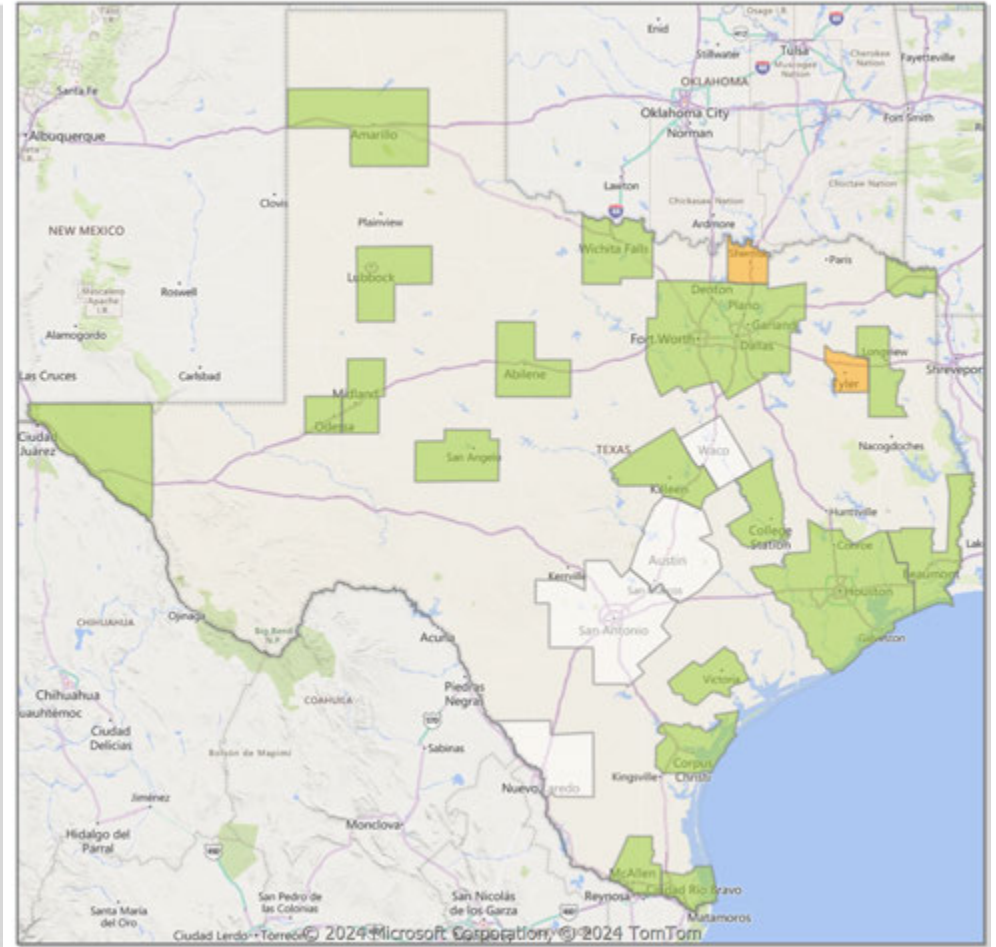
\* Closed Sale counts for most recent 3 months are Preliminary.

**Comparison By Metropolitan Statistical Area in Texas**

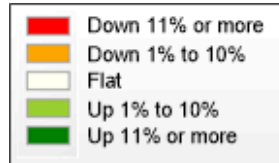
**Residential\* Closed Sales YoY Percentage Change**



**Residential\* Avg Close Price Per SqFt YoY Percentage Change**

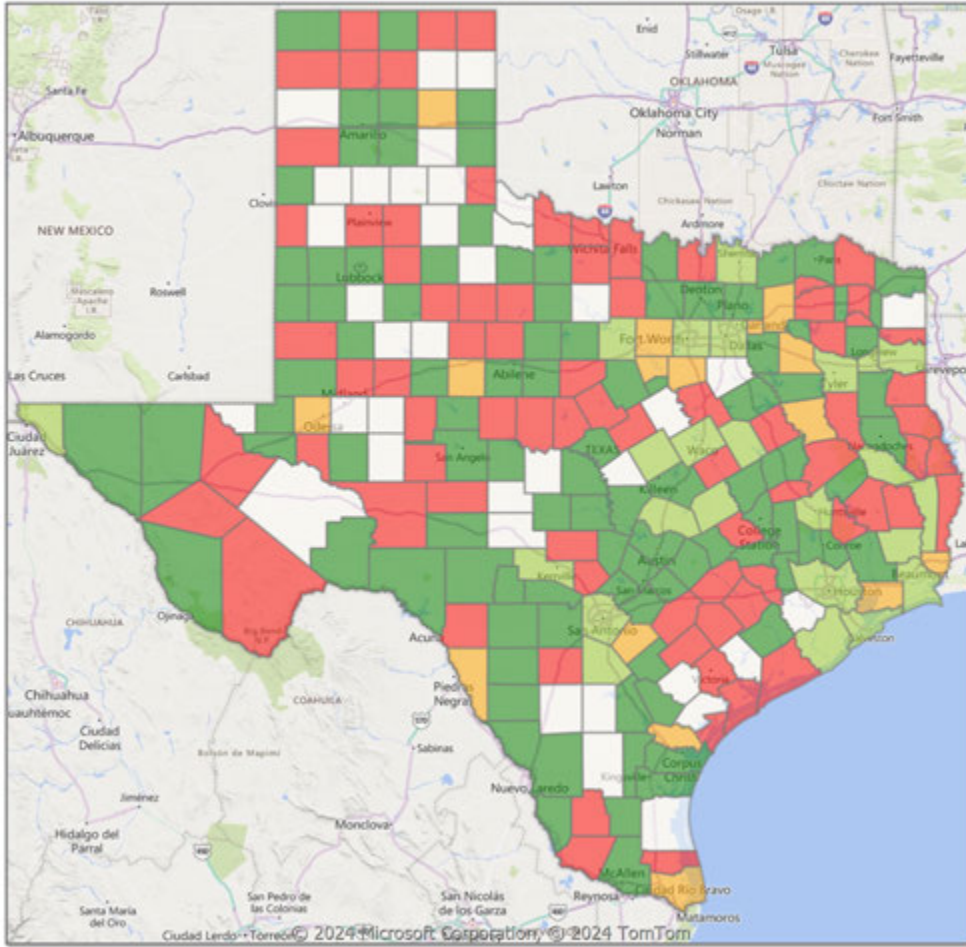


\* Residential includes Single Family, Condominium and Townhouse.

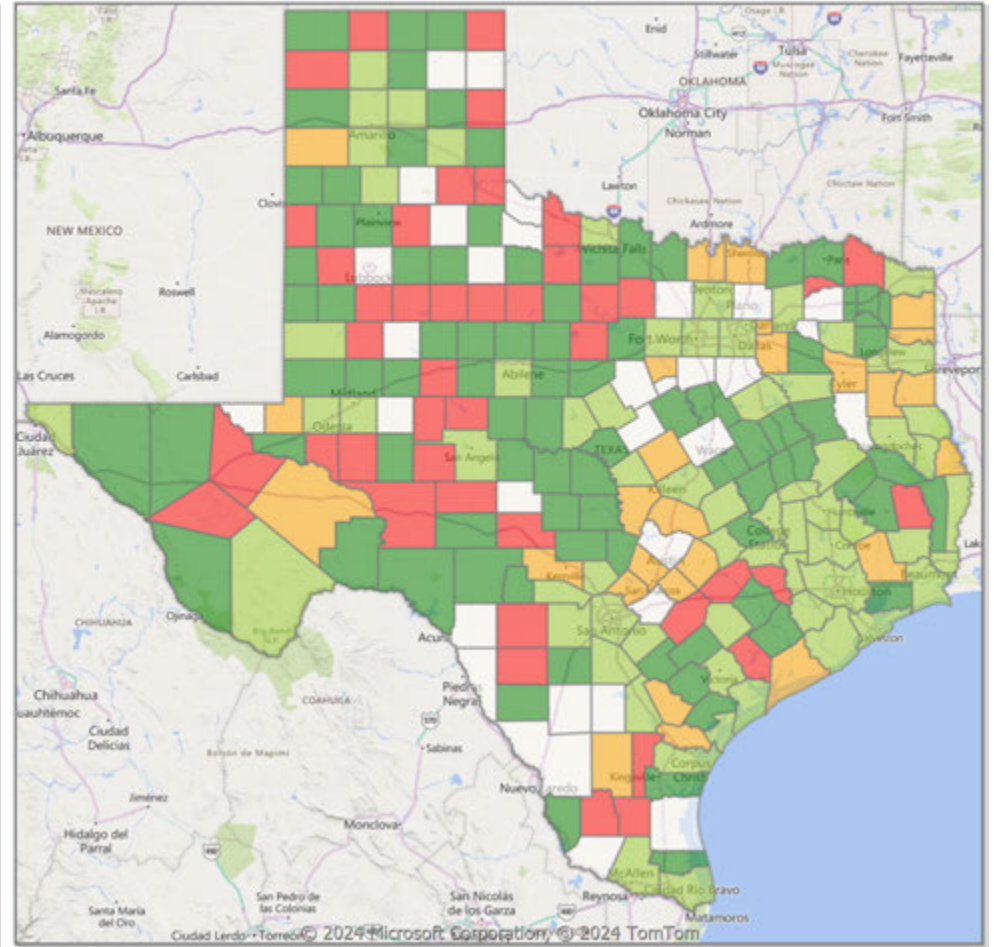


**Comparison By County in Texas**

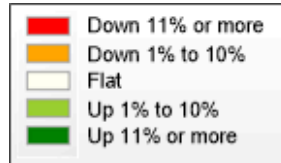
**Residential\* Closed Sales  
YoY Percentage Change**



**Residential\* Avg Close Price Per SqFt  
YoY Percentage Change**



\* Residential includes Single Family, Condominium and Townhouse.



Market Analysis By County: Blanco County

Property Type	Closed Sales*	YoY%	Dollar Volume	YoY%	Average Price	YoY%	Median Price	YoY%	Price/Sqft	YoY%	DOM	New Listings	Active Listings	Pending Sales	Months Inventory	Close To OLP
<b>All(New and Existing)</b>																
Residential (SF/COND/TH)	14	27.3%	\$6,761,246	18.4%	\$482,946	-7.0%	\$430,000	-8.7%	\$296	11.2%	217	35	171	9	12.6	92.4%
YTD:	45	-2.2%	\$26,667,307	13.7%	\$592,607	16.3%	\$477,500	1.6%	\$421	60.0%	131	130	155	45		93.7%
Single Family	14	27.3%	\$6,761,246	18.4%	\$482,946	-7.0%	\$430,000	-8.7%	\$296	11.2%	217	35	171	9	12.6	92.4%
YTD:	45	-2.2%	\$26,667,307	13.7%	\$592,607	16.3%	\$477,500	1.6%	\$421	60.0%	131	129	154	45		93.7%
Townhouse	-	0.0%	-	0.0%	-	0.0%	-	0.0%	-	0.0%	-	-	-	-	-	0.0%
YTD:	-	0.0%	-	0.0%	-	0.0%	-	0.0%	-	0.0%	-	-	-	-	-	0.0%
Condominium	-	0.0%	-	0.0%	-	0.0%	-	0.0%	-	0.0%	-	-	-	-	-	0.0%
YTD:	-	0.0%	-	0.0%	-	0.0%	-	0.0%	-	0.0%	-	1	1	-	-	0.0%
<b>Existing Home</b>																
Residential (SF/COND/TH)	8	0.0%	\$4,398,500	1.0%	\$549,813	1.0%	\$509,500	-10.9%	\$346	26.3%	166	30	106	7	11.6	91.6%
YTD:	32	14.3%	\$20,796,500	37.6%	\$649,891	20.4%	\$515,000	7.8%	\$488	75.7%	117	89	90	33		92.8%
Single Family	8	0.0%	\$4,398,500	1.0%	\$549,813	1.0%	\$509,500	-10.9%	\$346	26.3%	166	30	106	7	11.6	91.6%
YTD:	32	14.3%	\$20,796,500	37.6%	\$649,891	20.4%	\$515,000	7.8%	\$488	75.7%	117	88	89	33		92.8%
Townhouse	-	0.0%	-	0.0%	-	0.0%	-	0.0%	-	0.0%	-	-	-	-	-	0.0%
YTD:	-	0.0%	-	0.0%	-	0.0%	-	0.0%	-	0.0%	-	-	-	-	-	0.0%
Condominium	-	0.0%	-	0.0%	-	0.0%	-	0.0%	-	0.0%	-	-	-	-	-	0.0%
YTD:	-	0.0%	-	0.0%	-	0.0%	-	0.0%	-	0.0%	-	1	1	-	-	0.0%
<b>New Construction</b>																
Residential (SF/COND/TH)	5	66.7%	\$1,879,800	38.6%	\$375,960	-16.8%	\$430,000	-4.4%	\$215	-12.0%	298	5	65	2	15.0	93.6%
YTD:	12	-33.3%	\$5,278,200	-36.7%	\$439,850	-5.0%	\$447,500	-4.7%	\$228	-5.8%	168	41	65	12		96.1%
Single Family	5	66.7%	\$1,879,800	38.6%	\$375,960	-16.8%	\$430,000	-4.4%	\$215	-12.0%	298	5	65	2	15.0	93.6%
YTD:	12	-33.3%	\$5,278,200	-36.7%	\$439,850	-5.0%	\$447,500	-4.7%	\$228	-5.8%	168	41	65	12		96.1%
Townhouse	-	0.0%	-	0.0%	-	0.0%	-	0.0%	-	0.0%	-	-	-	-	-	0.0%
YTD:	-	0.0%	-	0.0%	-	0.0%	-	0.0%	-	0.0%	-	-	-	-	-	0.0%
Condominium	-	0.0%	-	0.0%	-	0.0%	-	0.0%	-	0.0%	-	-	-	-	-	0.0%
YTD:	-	0.0%	-	0.0%	-	0.0%	-	0.0%	-	0.0%	-	-	-	-	-	0.0%

\* Closed Sale counts for most recent 3 months are Preliminary.

Market Analysis By County: Gillespie County

Property Type	Closed Sales*	YoY%	Dollar Volume	YoY%	Average Price	YoY%	Median Price	YoY%	Price/Sqft	YoY%	DOM	New Listings	Active Listings	Pending Sales	Months Inventory	Close To OLP
<b>All(New and Existing)</b>																
Residential (SF/COND/TH)	32	-18.0%	\$24,044,492	-17.2%	\$751,390	0.9%	\$527,000	-10.7%	\$385	16.9%	134	78	305	36	9.9	91.6%
YTD:	116	8.4%	\$74,764,420	-0.4%	\$644,521	-8.1%	\$485,000	-17.8%	\$360	12.4%	140	279	289	83		90.9%
Single Family	32	-18.0%	\$24,044,492	-17.2%	\$751,390	0.9%	\$527,000	-10.7%	\$385	16.9%	134	76	287	36	9.4	91.6%
YTD:	116	8.4%	\$74,764,420	-0.4%	\$644,521	-8.1%	\$485,000	-17.8%	\$360	12.4%	140	266	267	83		90.9%
Townhouse	-	0.0%	-	0.0%	-	0.0%	-	0.0%	-	0.0%	-	-	-	-	-	0.0%
YTD:	-	0.0%	-	0.0%	-	0.0%	-	0.0%	-	0.0%	-	-	-	-	-	0.0%
Condominium	-	0.0%	-	0.0%	-	0.0%	-	0.0%	-	0.0%	-	2	18	-	216.0	0.0%
YTD:	-	0.0%	-	0.0%	-	0.0%	-	0.0%	-	0.0%	-	13	21	-		0.0%
<b>Existing Home</b>																
Residential (SF/COND/TH)	27	-15.6%	\$21,973,036	-12.3%	\$813,816	4.0%	\$543,500	-21.0%	\$412	20.6%	140	73	273	23	10.4	92.3%
YTD:	101	16.1%	\$67,598,563	6.8%	\$669,293	-8.0%	\$515,000	-14.2%	\$376	14.2%	149	238	247	60		91.2%
Single Family	27	-15.6%	\$21,973,036	-12.3%	\$813,816	4.0%	\$543,500	-21.0%	\$412	20.6%	140	71	262	23	10.1	92.3%
YTD:	101	16.1%	\$67,598,563	6.8%	\$669,293	-8.0%	\$515,000	-14.2%	\$376	14.2%	149	232	232	60		91.2%
Townhouse	-	0.0%	-	0.0%	-	0.0%	-	0.0%	-	0.0%	-	-	-	-	-	0.0%
YTD:	-	0.0%	-	0.0%	-	0.0%	-	0.0%	-	0.0%	-	-	-	-	-	0.0%
Condominium	-	0.0%	-	0.0%	-	0.0%	-	0.0%	-	0.0%	-	2	11	-	132.0	0.0%
YTD:	-	0.0%	-	0.0%	-	0.0%	-	0.0%	-	0.0%	-	6	14	-		0.0%
<b>New Construction</b>																
Residential (SF/COND/TH)	5	-28.6%	\$2,133,882	-46.6%	\$426,776	-25.3%	\$346,999	-37.5%	\$246	-10.2%	100	5	32	13	7.0	88.2%
YTD:	15	-25.0%	\$7,190,629	-39.0%	\$479,375	-18.6%	\$375,999	-31.0%	\$256	-9.4%	83	41	42	23		89.0%
Single Family	5	-28.6%	\$2,133,882	-46.6%	\$426,776	-25.3%	\$346,999	-37.5%	\$246	-10.2%	100	5	25	13	5.5	88.2%
YTD:	15	-25.0%	\$7,190,629	-39.0%	\$479,375	-18.6%	\$375,999	-31.0%	\$256	-9.4%	83	34	34	23		89.0%
Townhouse	-	0.0%	-	0.0%	-	0.0%	-	0.0%	-	0.0%	-	-	-	-	-	0.0%
YTD:	-	0.0%	-	0.0%	-	0.0%	-	0.0%	-	0.0%	-	-	-	-	-	0.0%
Condominium	-	0.0%	-	0.0%	-	0.0%	-	0.0%	-	0.0%	-	-	7	-	-	0.0%
YTD:	-	0.0%	-	0.0%	-	0.0%	-	0.0%	-	0.0%	-	7	7	-		0.0%

\* Closed Sale counts for most recent 3 months are Preliminary.

Market Analysis By County: Kimble County

Property Type	Closed Sales*	YoY%	Dollar Volume	YoY%	Average Price	YoY%	Median Price	YoY%	Price/Sqft	YoY%	DOM	New Listings	Active Listings	Pending Sales	Months Inventory	Close To OLP
<b>All(New and Existing)</b>																
Residential (SF/COND/TH)	1	0.0%	\$140,000	-35.3%	\$140,000	-35.3%	\$140,000	-35.3%	\$126	-14.9%	16	2	17	1	20.4	0.0%
YTD:	3	0.0%	\$310,000	-73.9%	\$103,333	-73.9%	\$120,000	-44.5%	\$115	-52.1%	120	13	16	6		92.4%
Single Family	1	0.0%	\$140,000	-35.3%	\$140,000	-35.3%	\$140,000	-35.3%	\$126	-14.9%	16	2	17	1	20.4	0.0%
YTD:	3	0.0%	\$310,000	-73.9%	\$103,333	-73.9%	\$120,000	-44.5%	\$115	-52.1%	120	13	16	6		92.4%
Townhouse	-	0.0%	-	0.0%	-	0.0%	-	0.0%	-	0.0%	-	-	-	-	-	0.0%
YTD:	-	0.0%	-	0.0%	-	0.0%	-	0.0%	-	0.0%	-	-	-	-	-	0.0%
Condominium	-	0.0%	-	0.0%	-	0.0%	-	0.0%	-	0.0%	-	-	-	-	-	0.0%
YTD:	-	0.0%	-	0.0%	-	0.0%	-	0.0%	-	0.0%	-	-	-	-	-	0.0%
<b>Existing Home</b>																
Residential (SF/COND/TH)	1	0.0%	\$140,000	-35.3%	\$140,000	-35.3%	\$140,000	-35.3%	\$126	-14.9%	16	2	17	1	20.4	0.0%
YTD:	3	50.0%	\$310,000	8.3%	\$103,333	-27.8%	\$120,000	-16.2%	\$115	22.7%	120	13	15	5		92.4%
Single Family	1	0.0%	\$140,000	-35.3%	\$140,000	-35.3%	\$140,000	-35.3%	\$126	-14.9%	16	2	17	1	20.4	0.0%
YTD:	3	50.0%	\$310,000	8.3%	\$103,333	-27.8%	\$120,000	-16.2%	\$115	22.7%	120	13	15	5		92.4%
Townhouse	-	0.0%	-	0.0%	-	0.0%	-	0.0%	-	0.0%	-	-	-	-	-	0.0%
YTD:	-	0.0%	-	0.0%	-	0.0%	-	0.0%	-	0.0%	-	-	-	-	-	0.0%
Condominium	-	0.0%	-	0.0%	-	0.0%	-	0.0%	-	0.0%	-	-	-	-	-	0.0%
YTD:	-	0.0%	-	0.0%	-	0.0%	-	0.0%	-	0.0%	-	-	-	-	-	0.0%
<b>New Construction</b>																
Residential (SF/COND/TH)	-	0.0%	-	0.0%	-	0.0%	-	0.0%	-	0.0%	-	-	-	-	-	0.0%
YTD:	-	-100.0%	-	-100.0%	-	-100.0%	-	-100.0%	-	-100.0%	-	-	1	1		0.0%
Single Family	-	0.0%	-	0.0%	-	0.0%	-	0.0%	-	0.0%	-	-	-	-	-	0.0%
YTD:	-	-100.0%	-	-100.0%	-	-100.0%	-	-100.0%	-	-100.0%	-	-	1	1		0.0%
Townhouse	-	0.0%	-	0.0%	-	0.0%	-	0.0%	-	0.0%	-	-	-	-	-	0.0%
YTD:	-	0.0%	-	0.0%	-	0.0%	-	0.0%	-	0.0%	-	-	-	-	-	0.0%
Condominium	-	0.0%	-	0.0%	-	0.0%	-	0.0%	-	0.0%	-	-	-	-	-	0.0%
YTD:	-	0.0%	-	0.0%	-	0.0%	-	0.0%	-	0.0%	-	-	-	-	-	0.0%

\* Closed Sale counts for most recent 3 months are Preliminary.

Market Analysis By County: Mason County

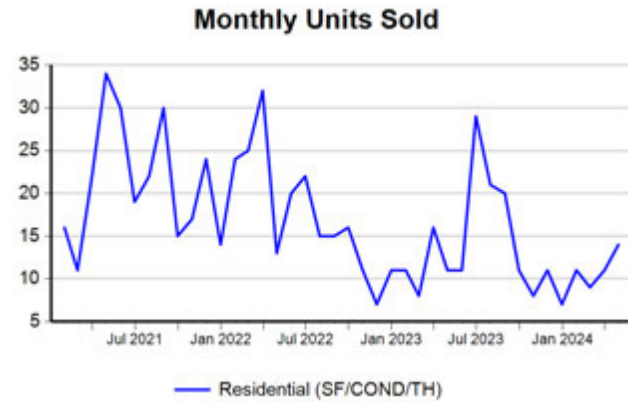
Property Type	Closed Sales*	YoY%	Dollar Volume	YoY%	Average Price	YoY%	Median Price	YoY%	Price/Sqft	YoY%	DOM	New Listings	Active Listings	Pending Sales	Months Inventory	Close To OLP
<b>All(New and Existing)</b>																
Residential (SF/COND/TH)	3	200.0%	\$868,500	426.4%	\$289,500	75.5%	\$244,500	48.2%	\$226	129.7%	166	6	28	-	11.2	95.3%
YTD:	6	-25.0%	\$1,469,500	-19.9%	\$244,917	6.8%	\$209,750	-6.8%	\$178	3.8%	112	19	22	3		94.2%
Single Family	3	200.0%	\$868,500	426.4%	\$289,500	75.5%	\$244,500	48.2%	\$226	129.7%	166	6	28	-	11.2	95.3%
YTD:	6	-25.0%	\$1,469,500	-19.9%	\$244,917	6.8%	\$209,750	-6.8%	\$178	3.8%	112	19	22	3		94.2%
Townhouse	-	0.0%	-	0.0%	-	0.0%	-	0.0%	-	0.0%	-	-	-	-	-	0.0%
YTD:	-	0.0%	-	0.0%	-	0.0%	-	0.0%	-	0.0%	-	-	-	-	-	0.0%
Condominium	-	0.0%	-	0.0%	-	0.0%	-	0.0%	-	0.0%	-	-	-	-	-	0.0%
YTD:	-	0.0%	-	0.0%	-	0.0%	-	0.0%	-	0.0%	-	-	-	-	-	0.0%
<b>Existing Home</b>																
Residential (SF/COND/TH)	3	200.0%	\$868,500	426.4%	\$289,500	75.5%	\$244,500	48.2%	\$226	129.7%	166	6	27	-	10.8	95.3%
YTD:	6	-25.0%	\$1,469,500	-19.9%	\$244,917	6.8%	\$209,750	-6.8%	\$178	3.8%	112	18	21	2		94.2%
Single Family	3	200.0%	\$868,500	426.4%	\$289,500	75.5%	\$244,500	48.2%	\$226	129.7%	166	6	27	-	10.8	95.3%
YTD:	6	-25.0%	\$1,469,500	-19.9%	\$244,917	6.8%	\$209,750	-6.8%	\$178	3.8%	112	18	21	2		94.2%
Townhouse	-	0.0%	-	0.0%	-	0.0%	-	0.0%	-	0.0%	-	-	-	-	-	0.0%
YTD:	-	0.0%	-	0.0%	-	0.0%	-	0.0%	-	0.0%	-	-	-	-	-	0.0%
Condominium	-	0.0%	-	0.0%	-	0.0%	-	0.0%	-	0.0%	-	-	-	-	-	0.0%
YTD:	-	0.0%	-	0.0%	-	0.0%	-	0.0%	-	0.0%	-	-	-	-	-	0.0%
<b>New Construction</b>																
Residential (SF/COND/TH)	-	0.0%	-	0.0%	-	0.0%	-	0.0%	-	0.0%	-	-	1	-	-	0.0%
YTD:	-	0.0%	-	0.0%	-	0.0%	-	0.0%	-	0.0%	-	1	1	1		0.0%
Single Family	-	0.0%	-	0.0%	-	0.0%	-	0.0%	-	0.0%	-	-	1	-	-	0.0%
YTD:	-	0.0%	-	0.0%	-	0.0%	-	0.0%	-	0.0%	-	1	1	1		0.0%
Townhouse	-	0.0%	-	0.0%	-	0.0%	-	0.0%	-	0.0%	-	-	-	-	-	0.0%
YTD:	-	0.0%	-	0.0%	-	0.0%	-	0.0%	-	0.0%	-	-	-	-	-	0.0%
Condominium	-	0.0%	-	0.0%	-	0.0%	-	0.0%	-	0.0%	-	-	-	-	-	0.0%
YTD:	-	0.0%	-	0.0%	-	0.0%	-	0.0%	-	0.0%	-	-	-	-	-	0.0%

\* Closed Sale counts for most recent 3 months are Preliminary.



Trend Analysis By County: Blanco County

Residential, All (New and Existing)



Single Family, New vs. Existing



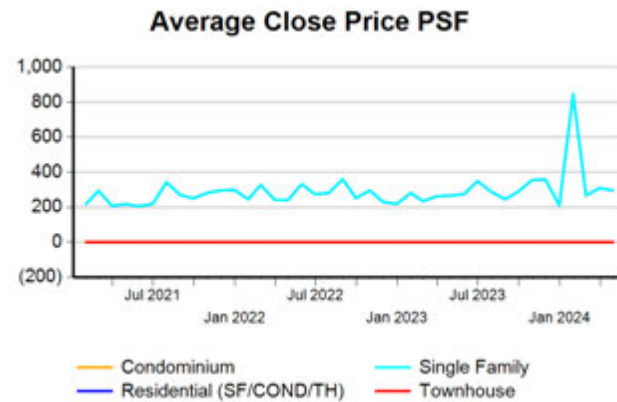
COND/TH, All (New and Existing)



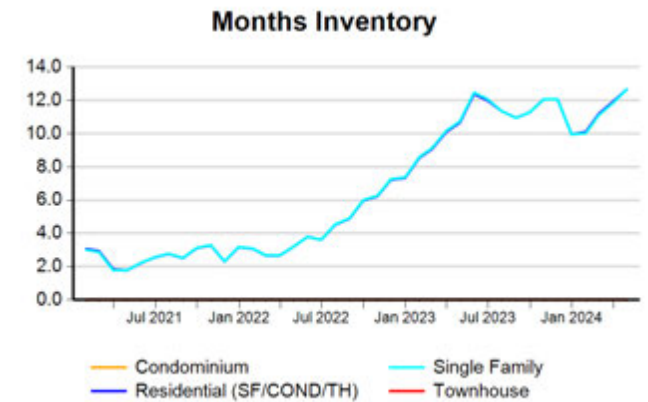
All (New and Existing) Construction



All (New and Existing) Construction



All (New and Existing) Construction



\* Closed Sale counts for most recent 3 months are Preliminary.

Trend Analysis By County: Gillespie County

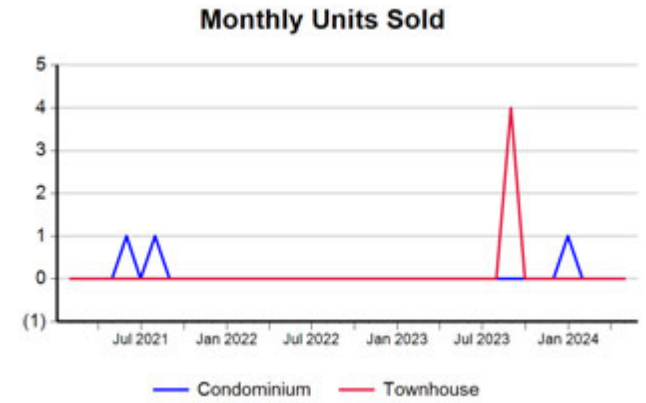
Residential, All (New and Existing)



Single Family, New vs. Existing



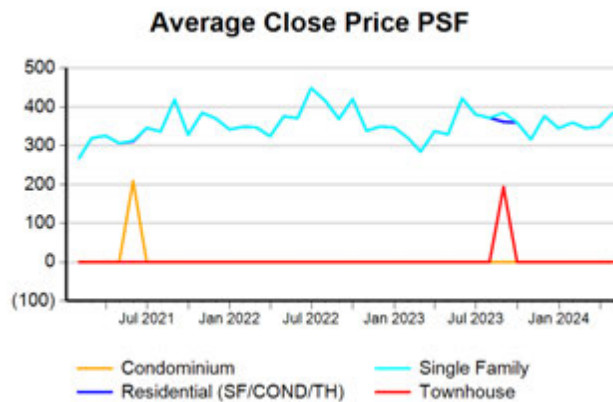
COND/TH, All (New and Existing)



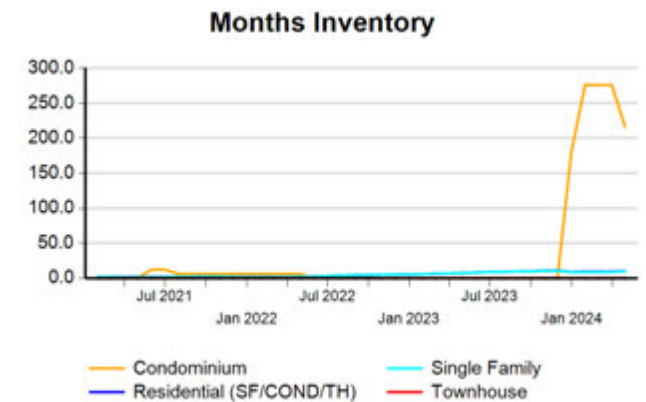
All (New and Existing) Construction



All (New and Existing) Construction



All (New and Existing) Construction



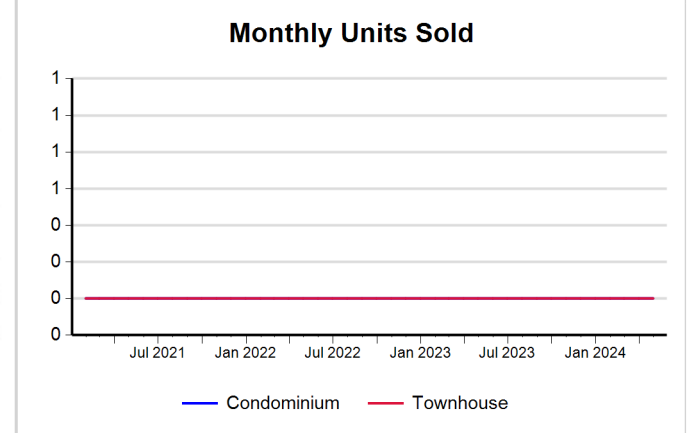
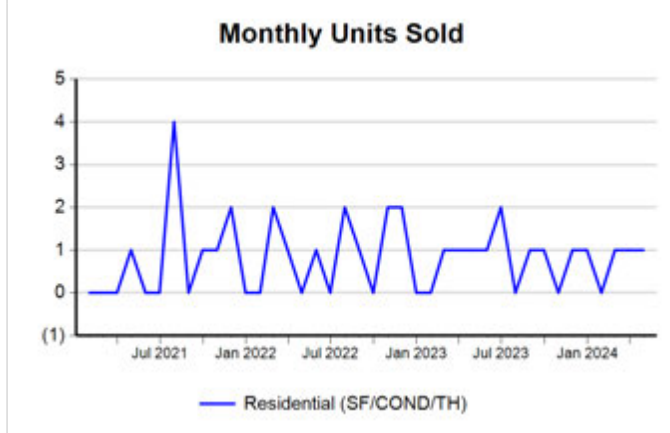
\* Closed Sale counts for most recent 3 months are Preliminary.

Trend Analysis By County: Kimble County

Residential, All (New and Existing)

Single Family, New vs. Existing

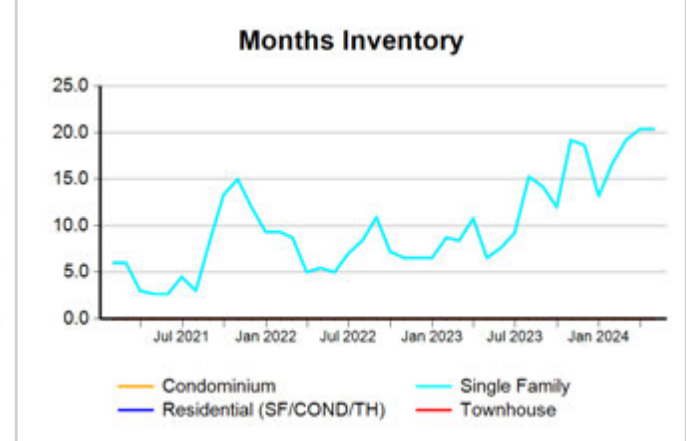
COND/TH, All (New and Existing)



All (New and Existing) Construction

All (New and Existing) Construction

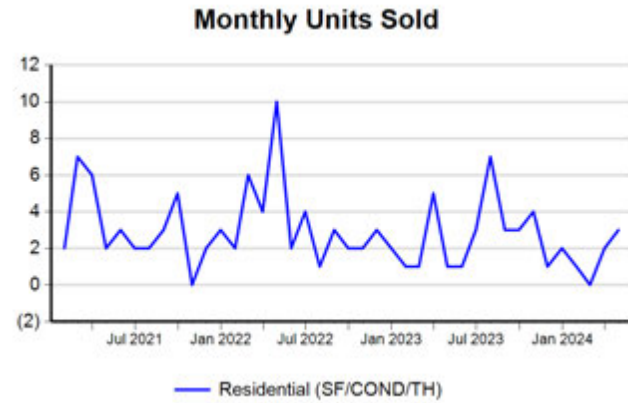
All (New and Existing) Construction



\* Closed Sale counts for most recent 3 months are Preliminary.

Trend Analysis By County: Mason County

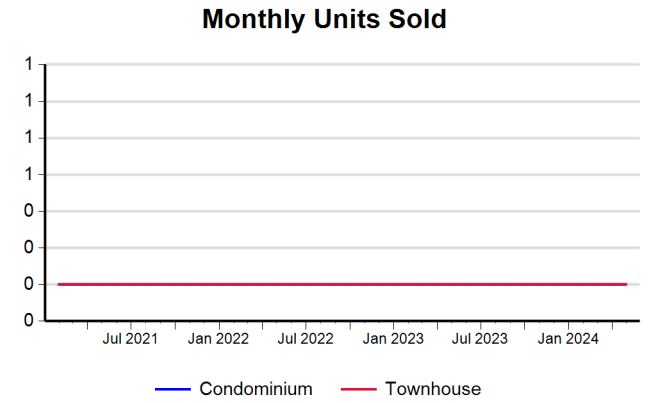
Residential, All (New and Existing)



Single Family, New vs. Existing



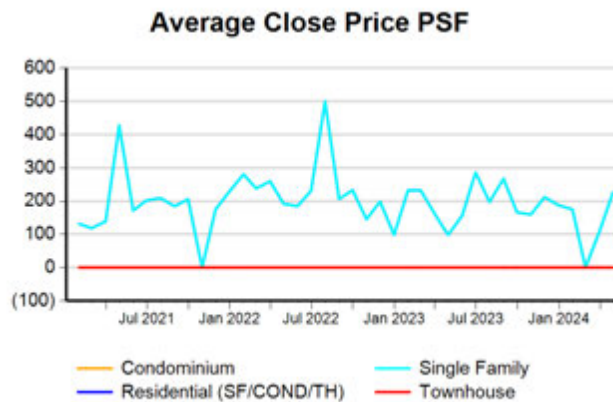
COND/TH, All (New and Existing)



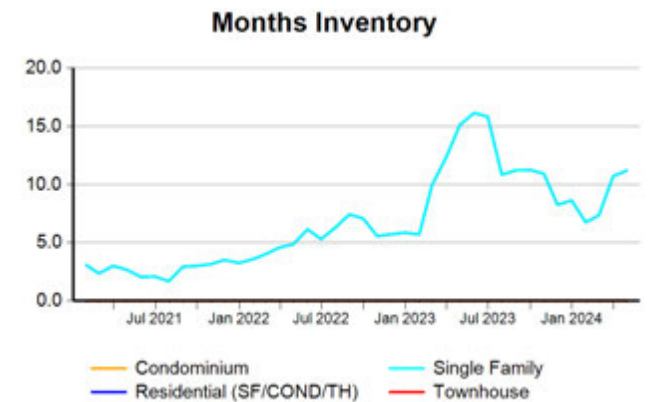
All (New and Existing) Construction



All (New and Existing) Construction



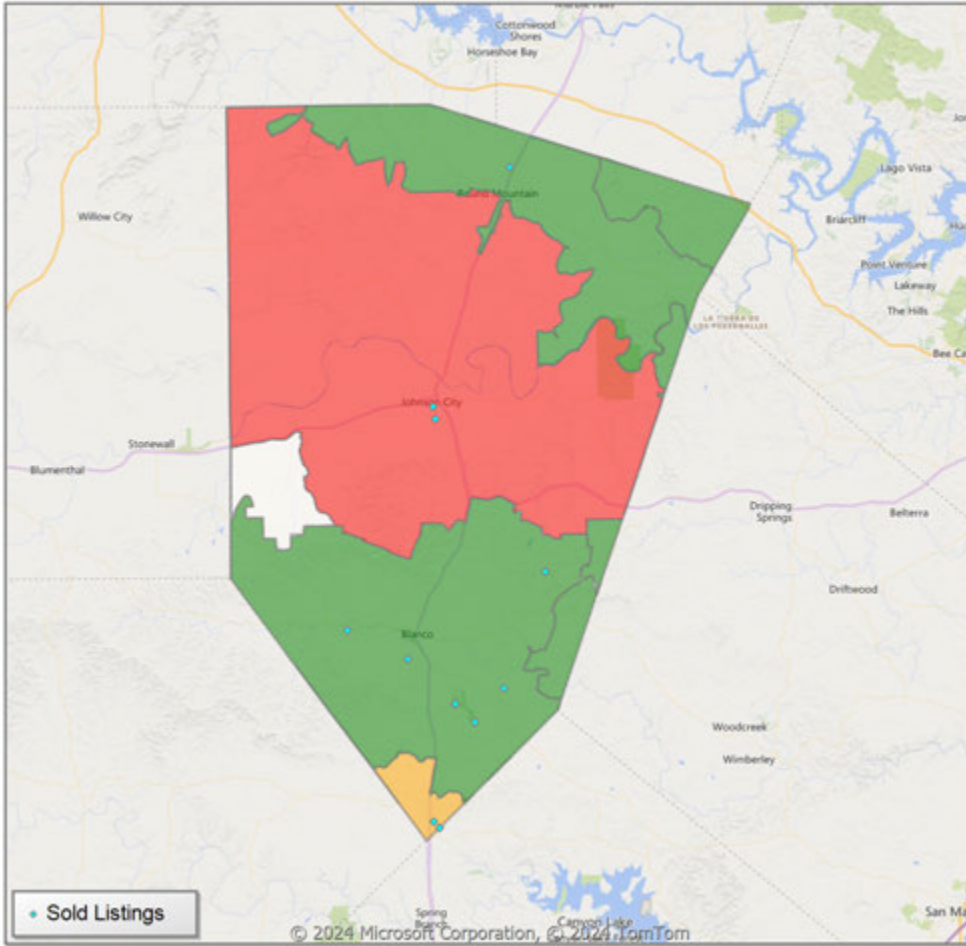
All (New and Existing) Construction



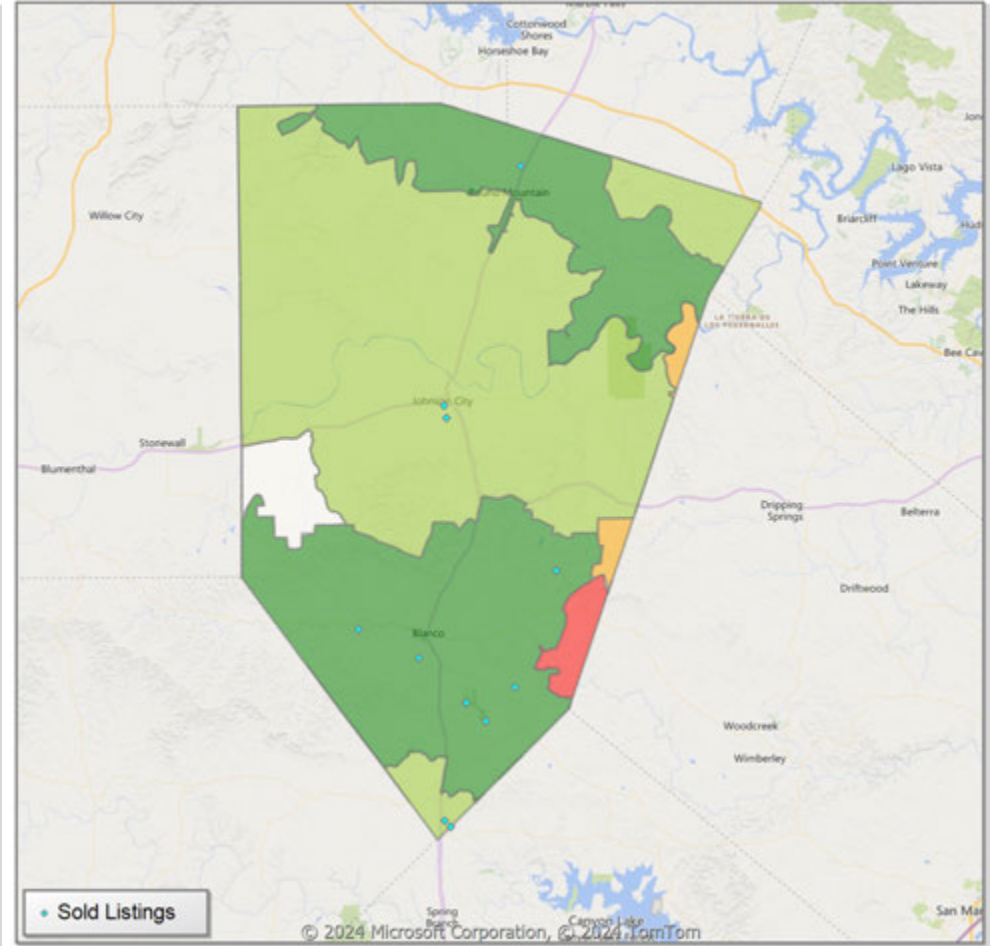
\* Closed Sale counts for most recent 3 months are Preliminary.

**Comparison By Zip Code\* in Blanco County**

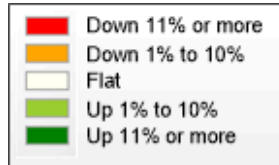
**Residential\*\* Closed Sales  
YoY Percentage Change**



**Residential\*\* Avg Close Price Per SqFt  
YoY Percentage Change**

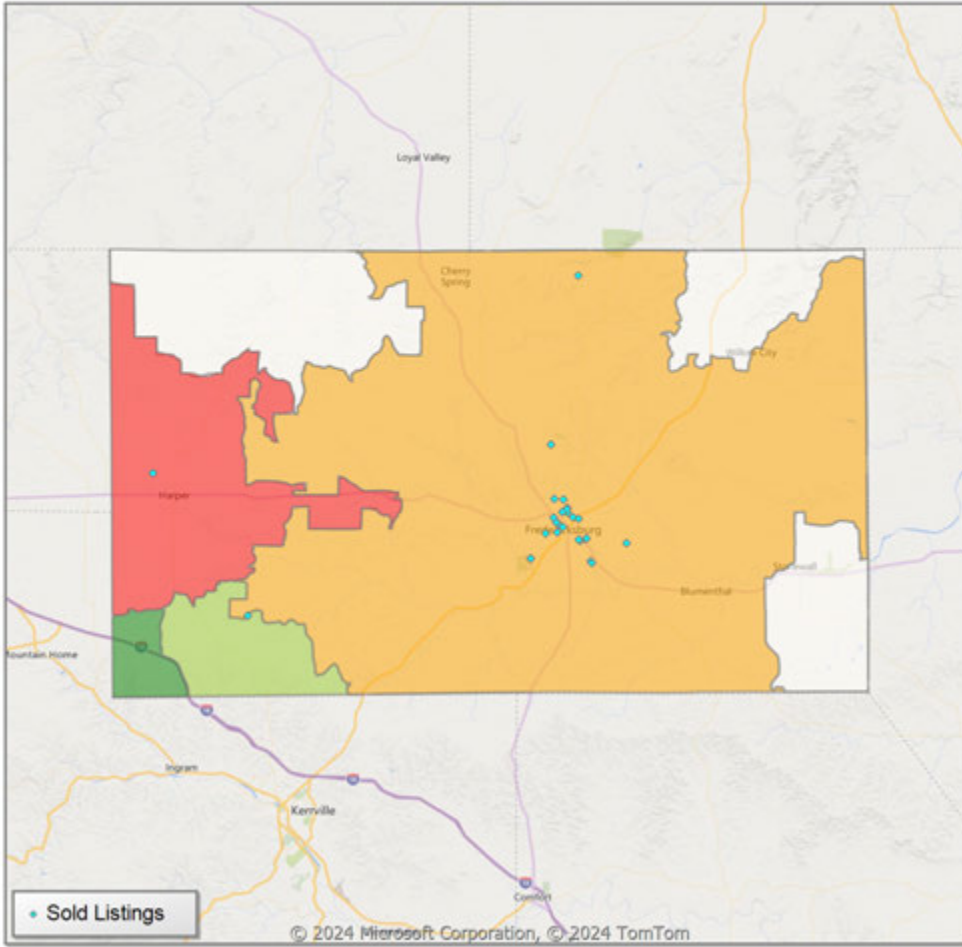


\* US Census Zip Code Tabulation Area  
\*\* Residential includes Single Family, Condominium and Townhouse.

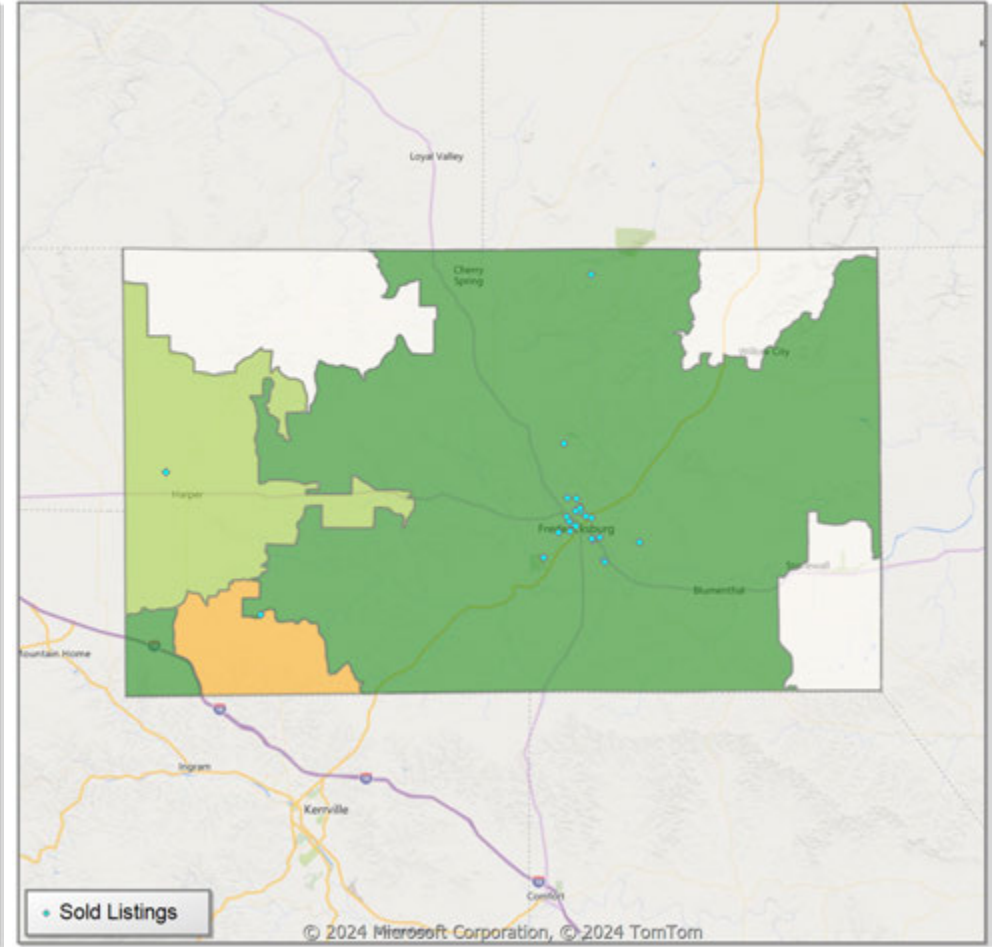


**Comparison By Zip Code\* in Gillespie County**

**Residential\*\* Closed Sales  
YoY Percentage Change**

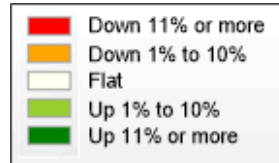


**Residential\*\* Avg Close Price Per SqFt  
YoY Percentage Change**



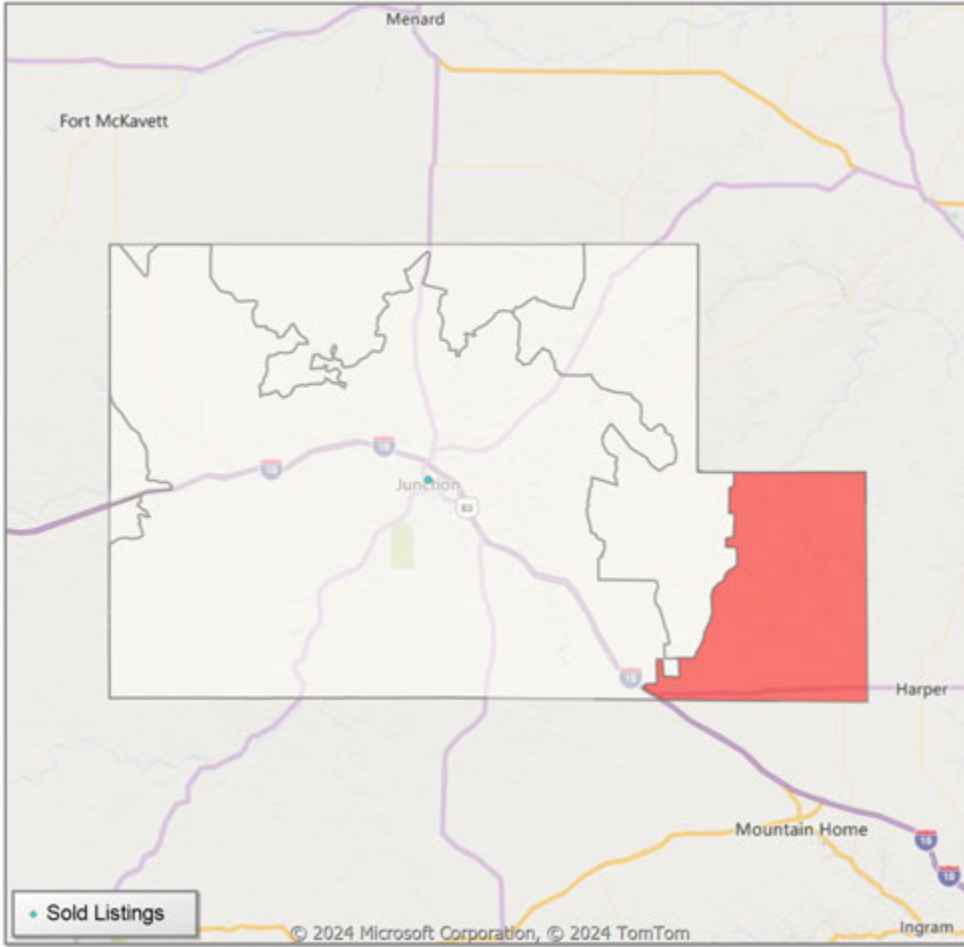
\* US Census Zip Code Tabulation Area

\*\* Residential includes Single Family, Condominium and Townhouse.

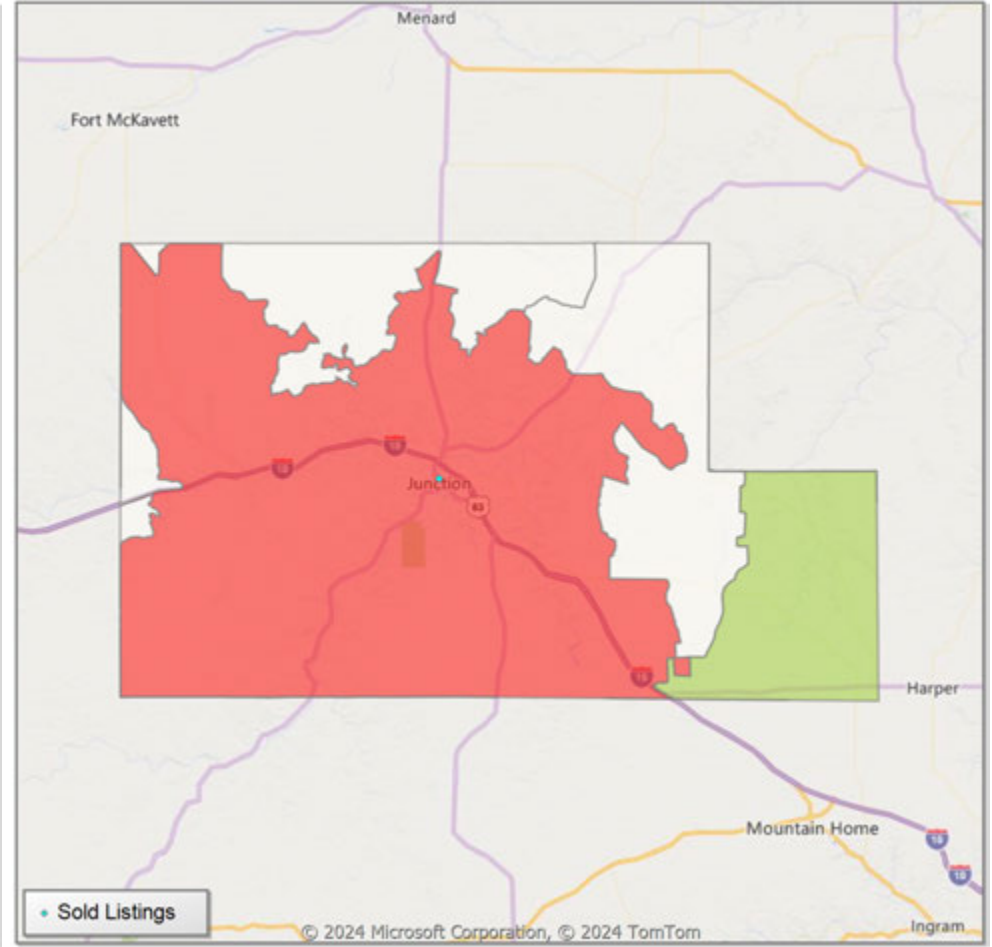


**Comparison By Zip Code\* in Kimble County**

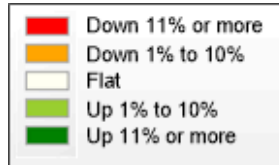
**Residential\*\* Closed Sales  
YoY Percentage Change**



**Residential\*\* Avg Close Price Per SqFt  
YoY Percentage Change**

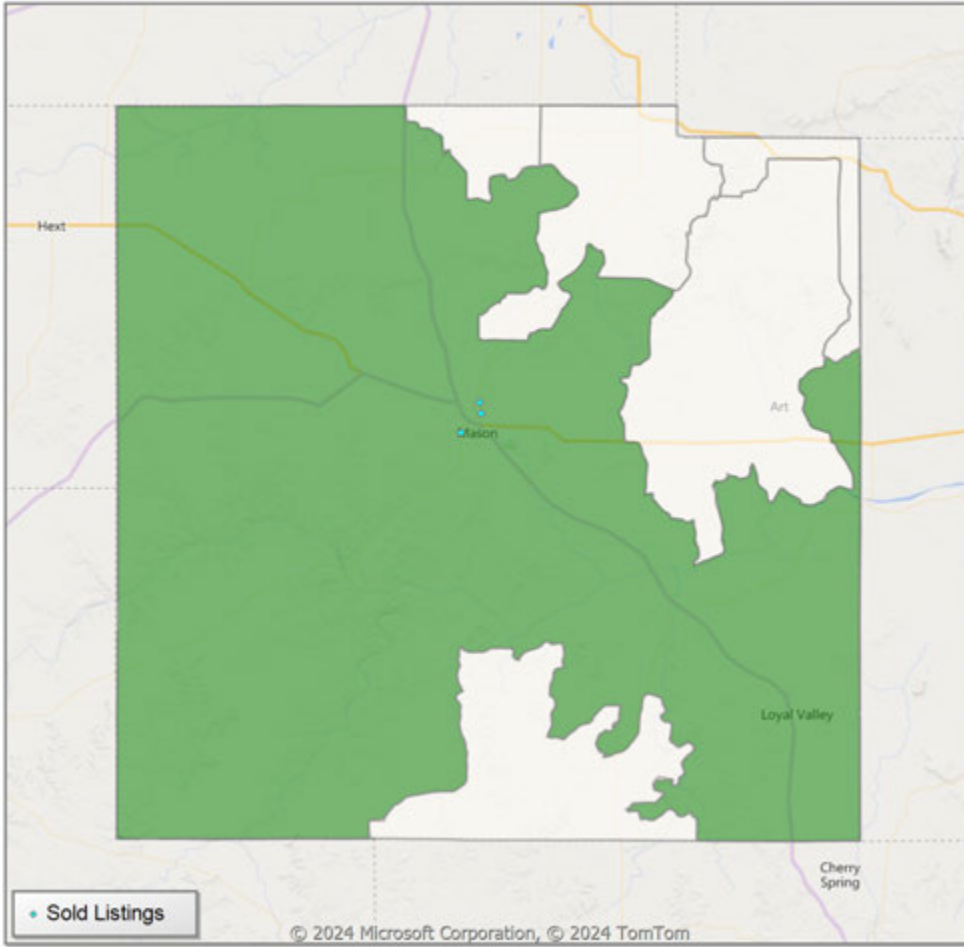


\* US Census Zip Code Tabulation Area  
\*\* Residential includes Single Family, Condominium and Townhouse.

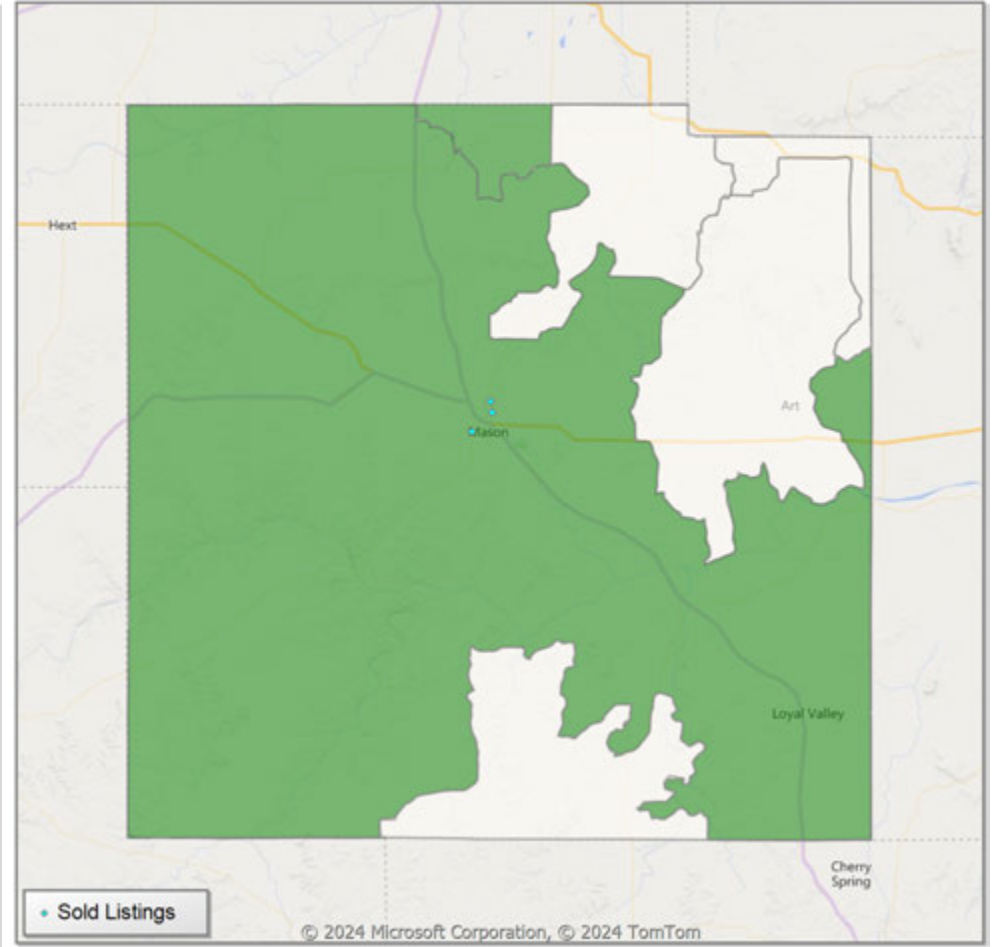


**Comparison By Zip Code\* in Mason County**

**Residential\*\* Closed Sales  
YoY Percentage Change**

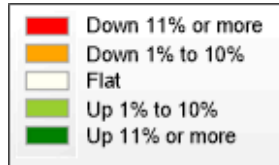


**Residential\*\* Avg Close Price Per SqFt  
YoY Percentage Change**



\* US Census Zip Code Tabulation Area

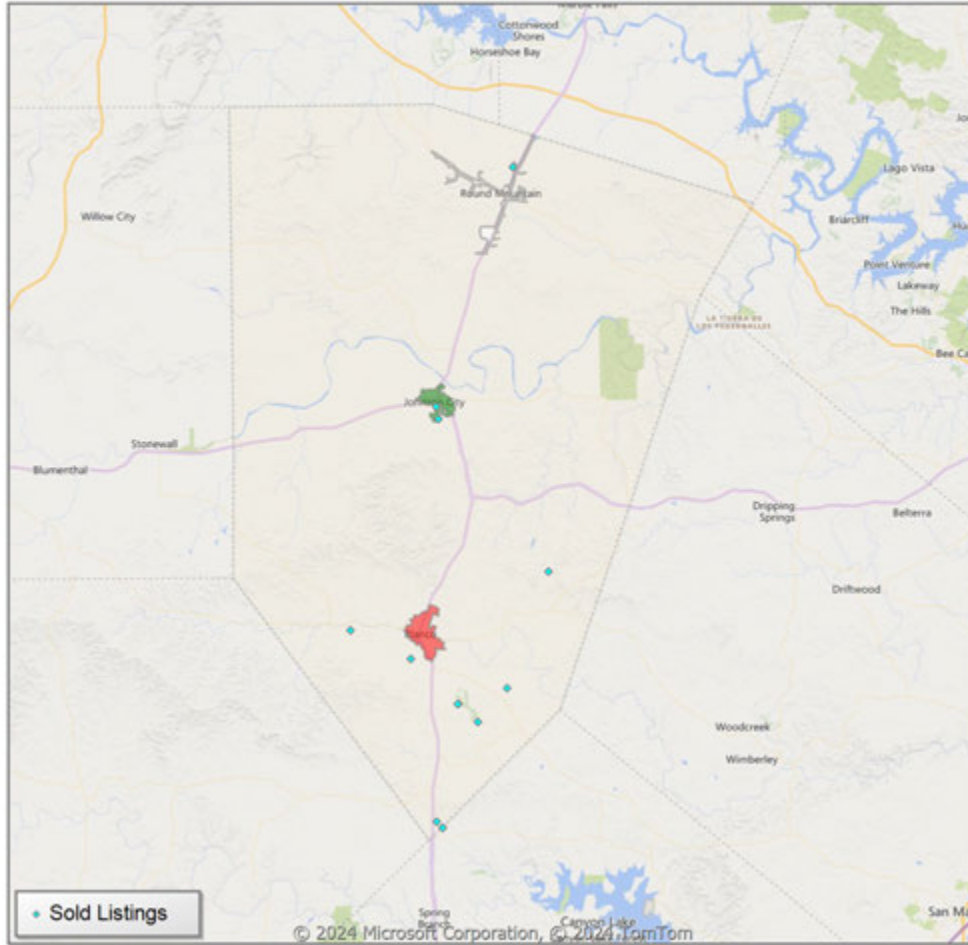
\*\* Residential includes Single Family, Condominium and Townhouse.



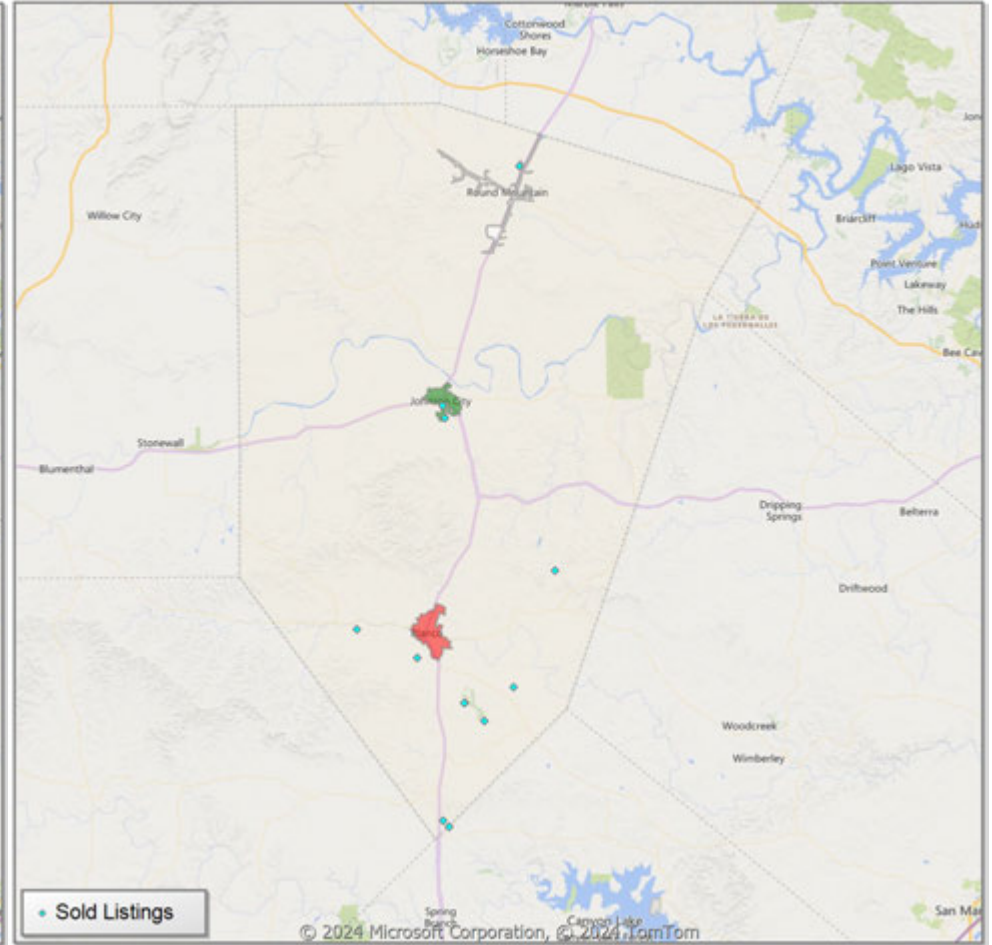


**Comparison By Local Market Area\* in Blanco County**

**Residential\*\* Closed Sales  
YoY Percentage Change**



**Residential\*\* Avg Close Price Per SqFt  
YoY Percentage Change**

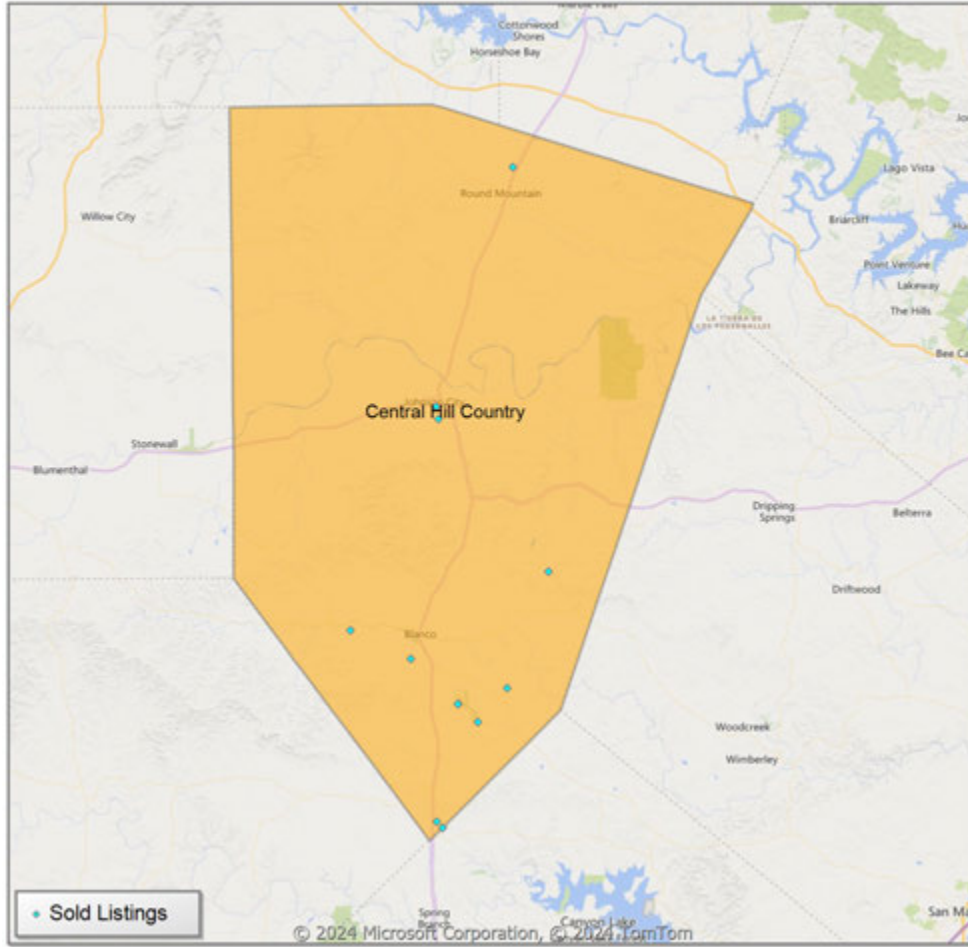


\* Census Place Group

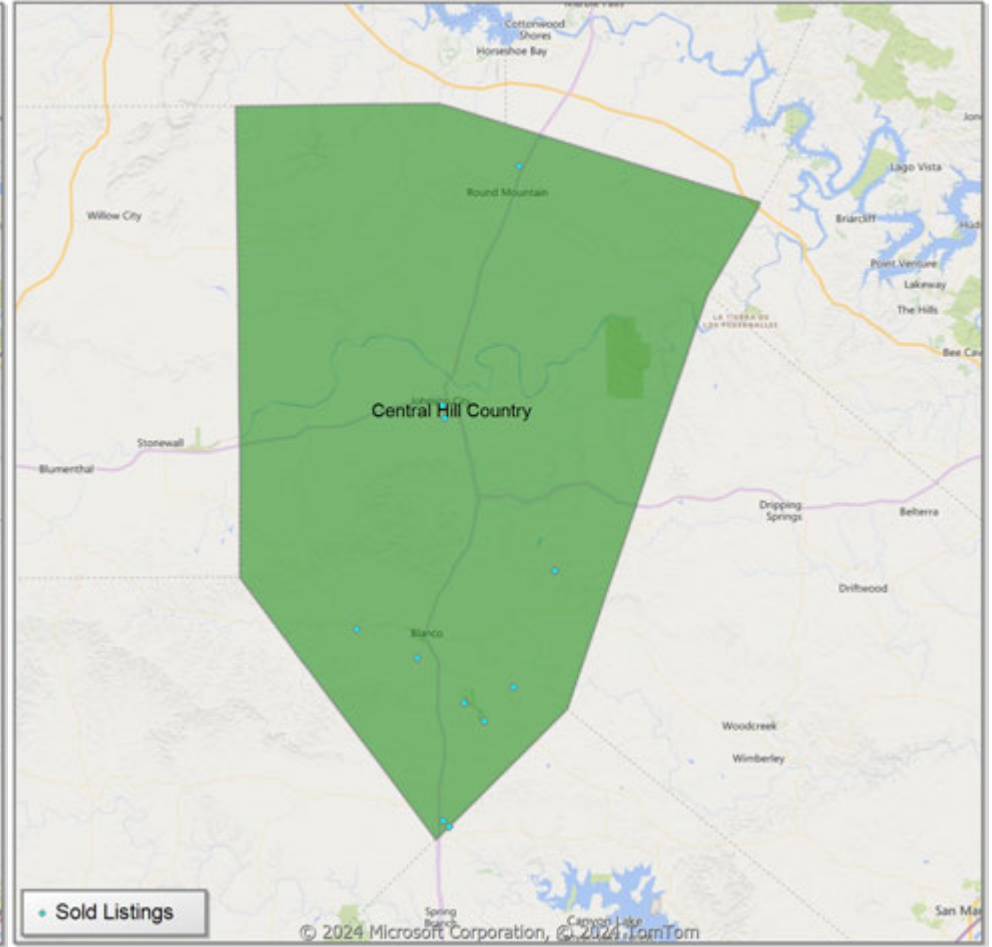
\*\* Residential includes Single Family, Condominium and Townhouse.

**Comparison By Local Market Area\* in Blanco County**

**Residential\*\* Closed Sales  
YoY Percentage Change**



**Residential\*\* Avg Close Price Per SqFt  
YoY Percentage Change**

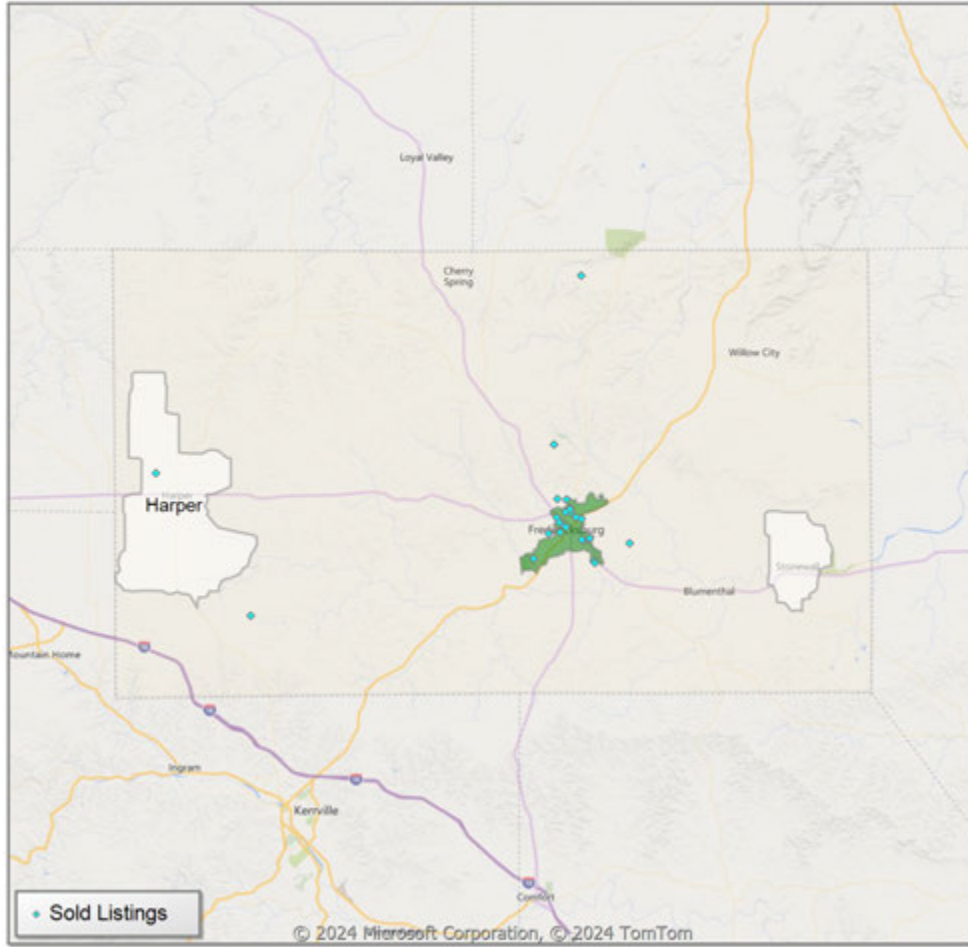


\* Custom Defined Market

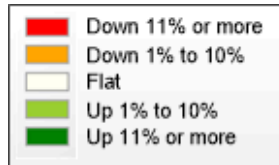
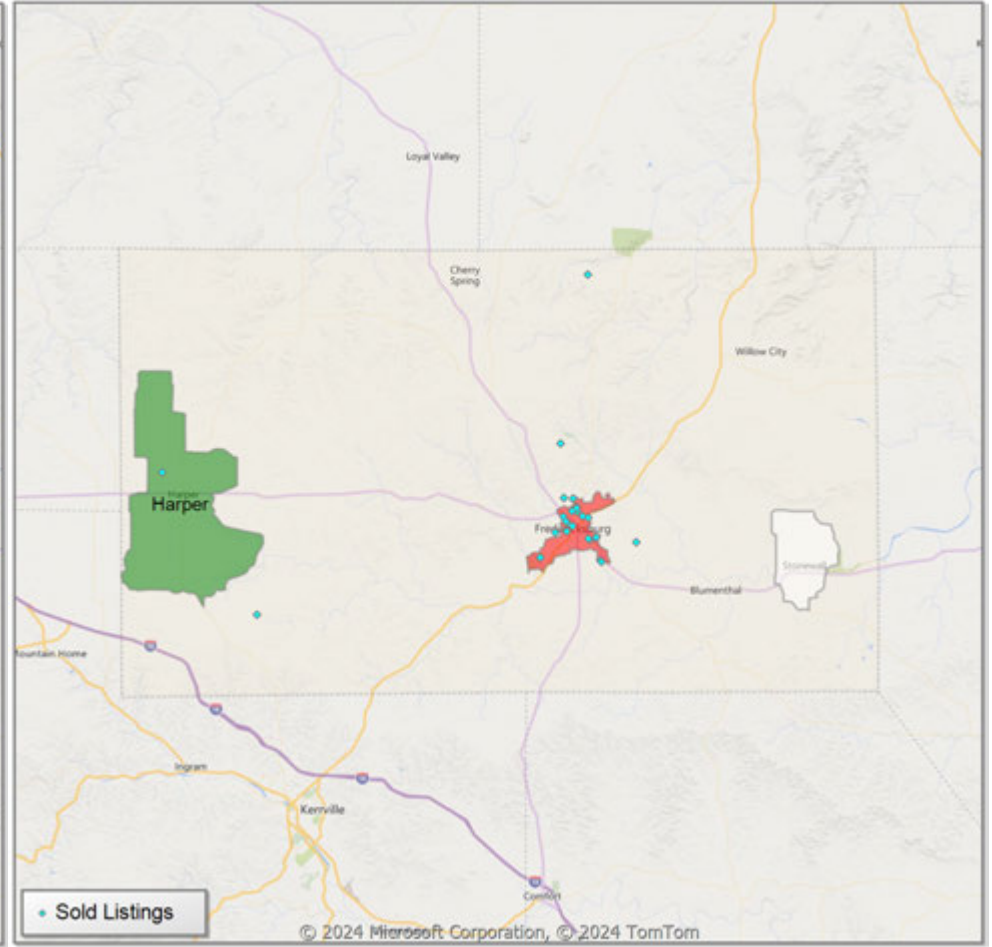
\*\* Residential includes Single Family, Condominium and Townhouse.

**Comparison By Local Market Area\* in Gillespie County**

**Residential\*\* Closed Sales  
YoY Percentage Change**



**Residential\*\* Avg Close Price Per SqFt  
YoY Percentage Change**

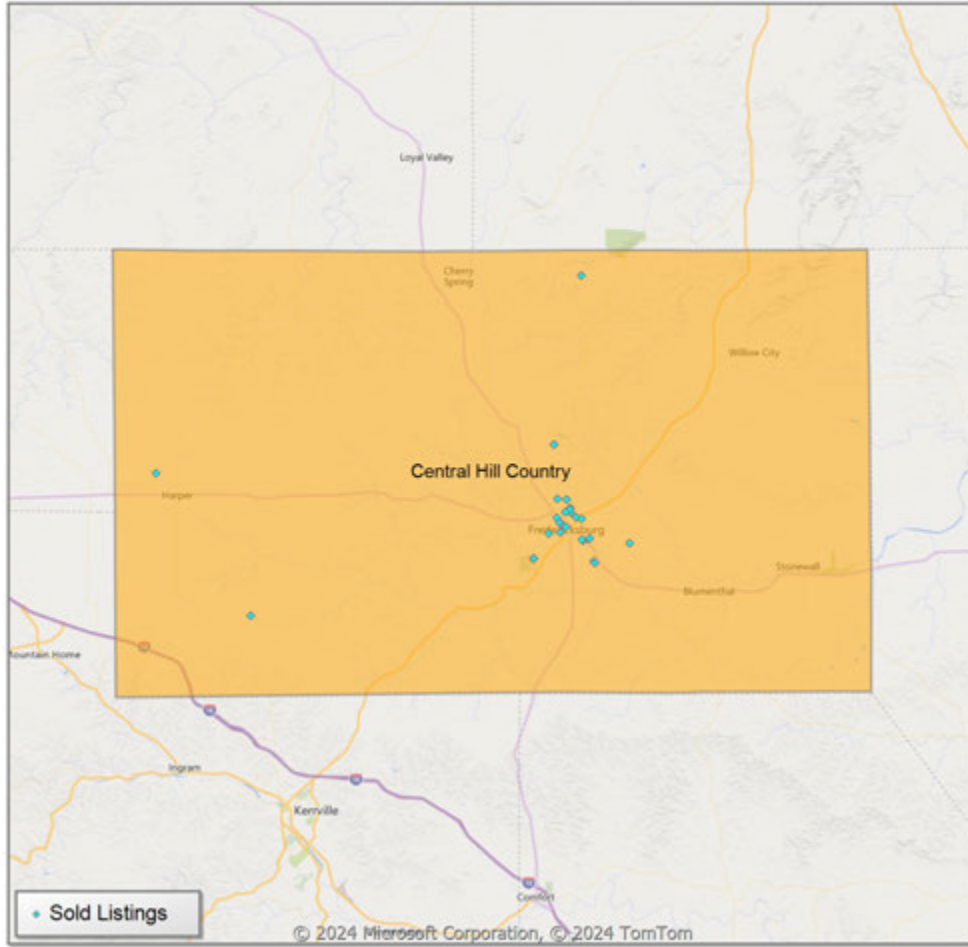


\* Census Place Group

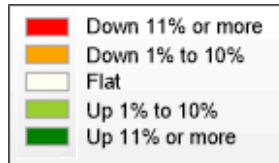
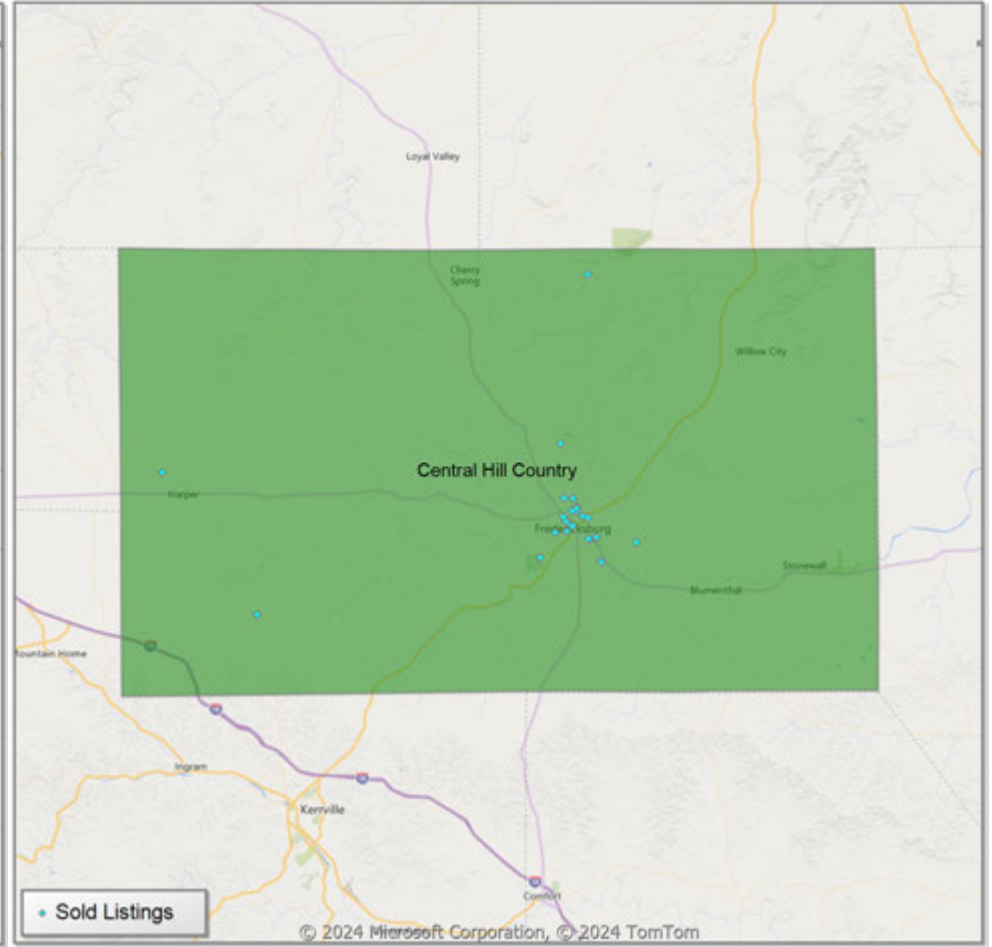
\*\* Residential includes Single Family, Condominium and Townhouse.

**Comparison By Local Market Area\* in Gillespie County**

**Residential\*\* Closed Sales  
YoY Percentage Change**



**Residential\*\* Avg Close Price Per SqFt  
YoY Percentage Change**

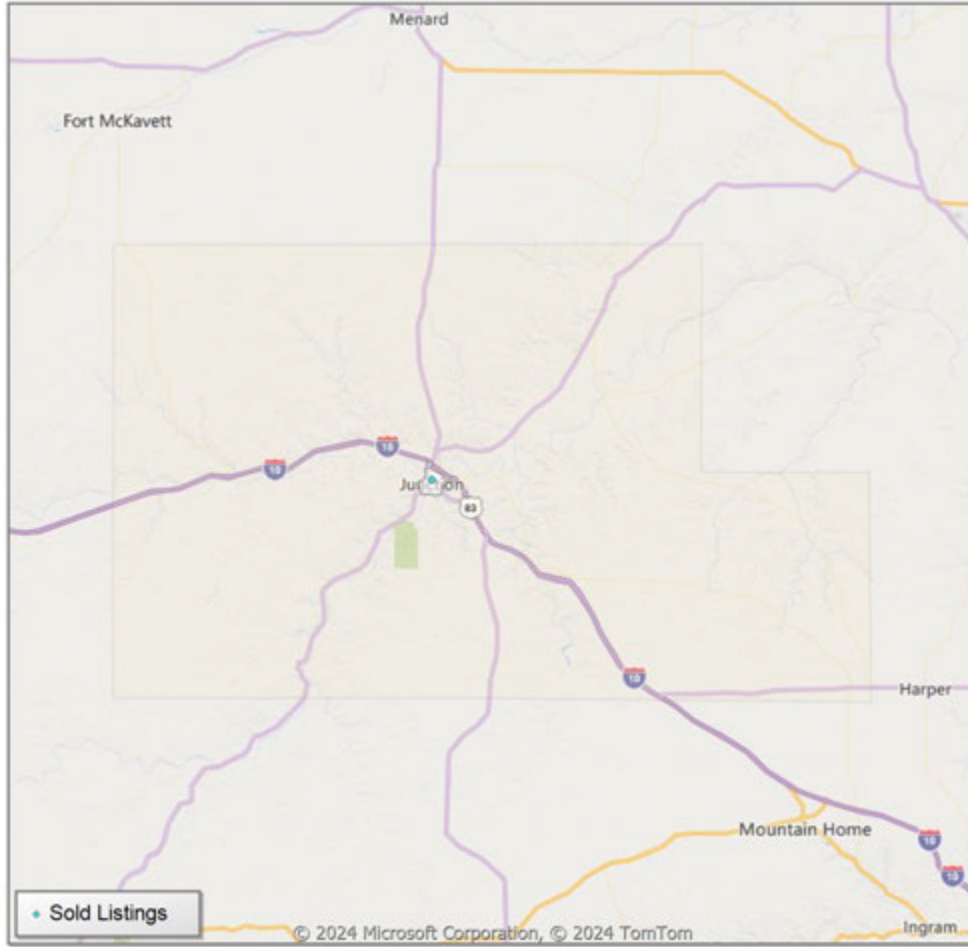


\* Custom Defined Market

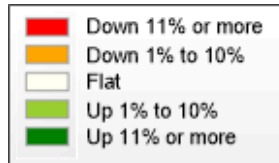
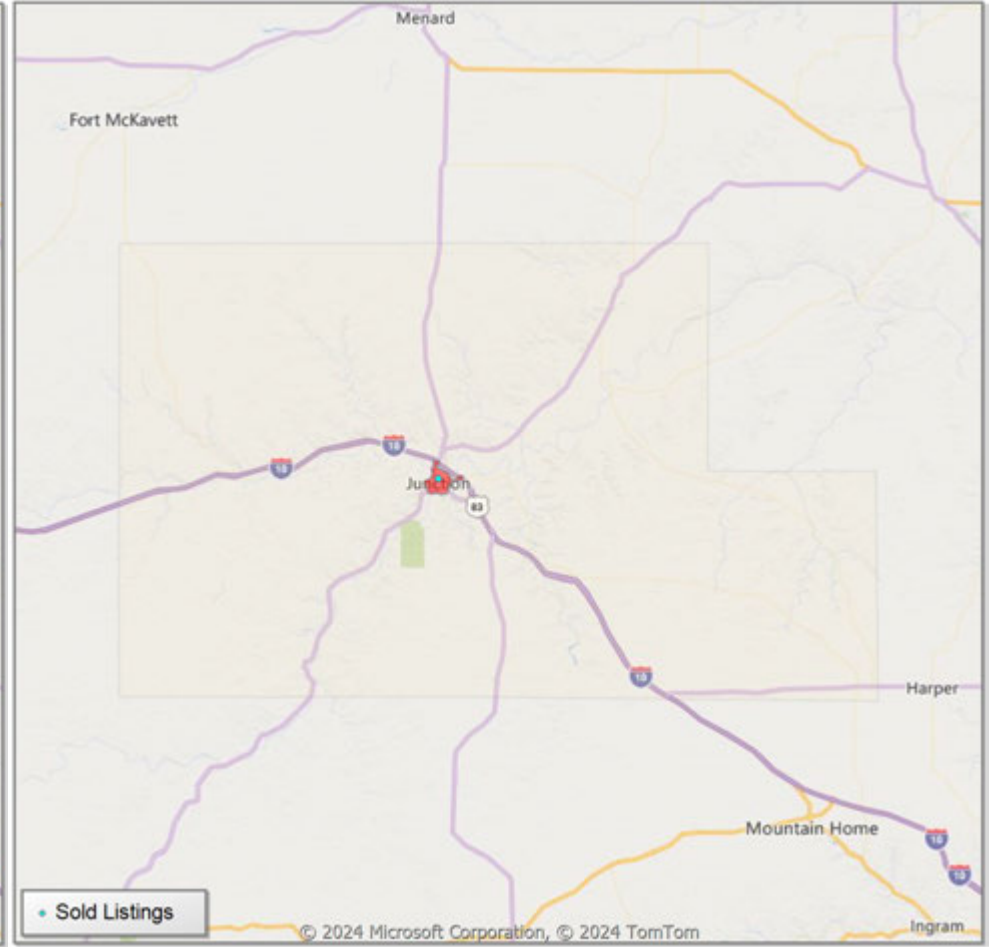
\*\* Residential includes Single Family, Condominium and Townhouse.

**Comparison By Local Market Area\* in Kimble County**

**Residential\*\* Closed Sales  
YoY Percentage Change**



**Residential\*\* Avg Close Price Per SqFt  
YoY Percentage Change**

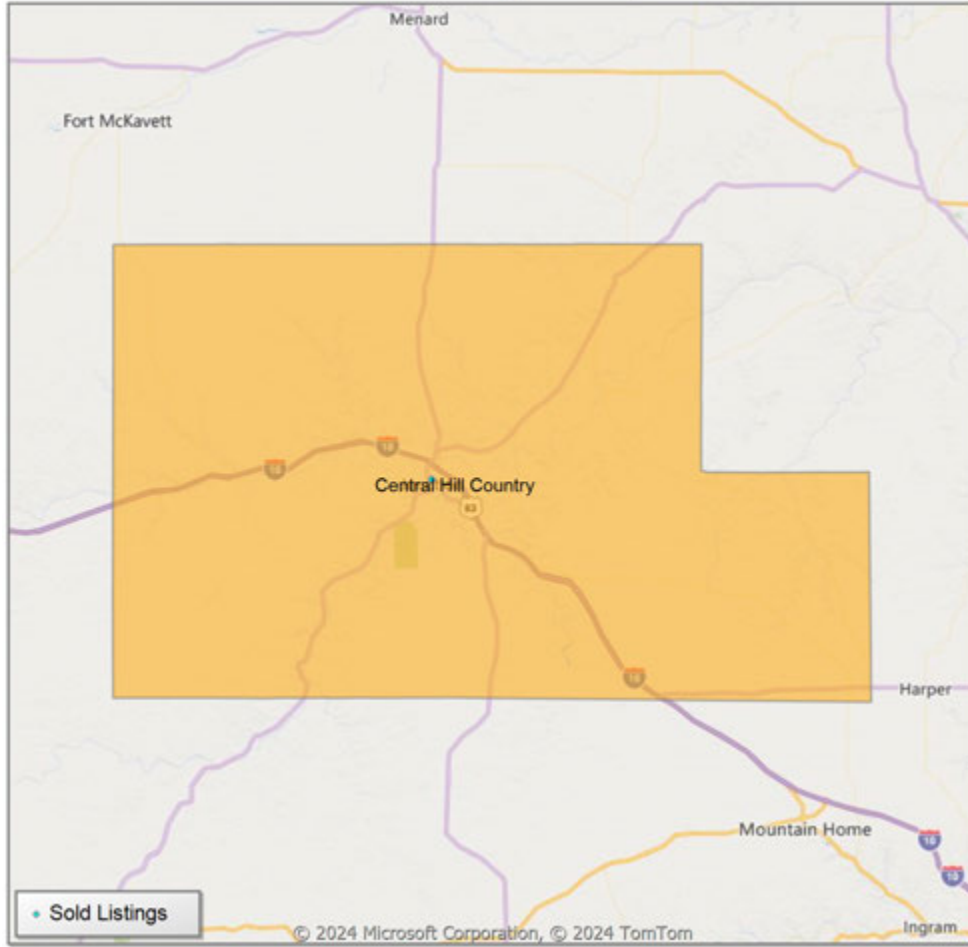


\* Census Place Group

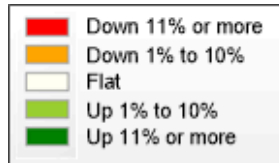
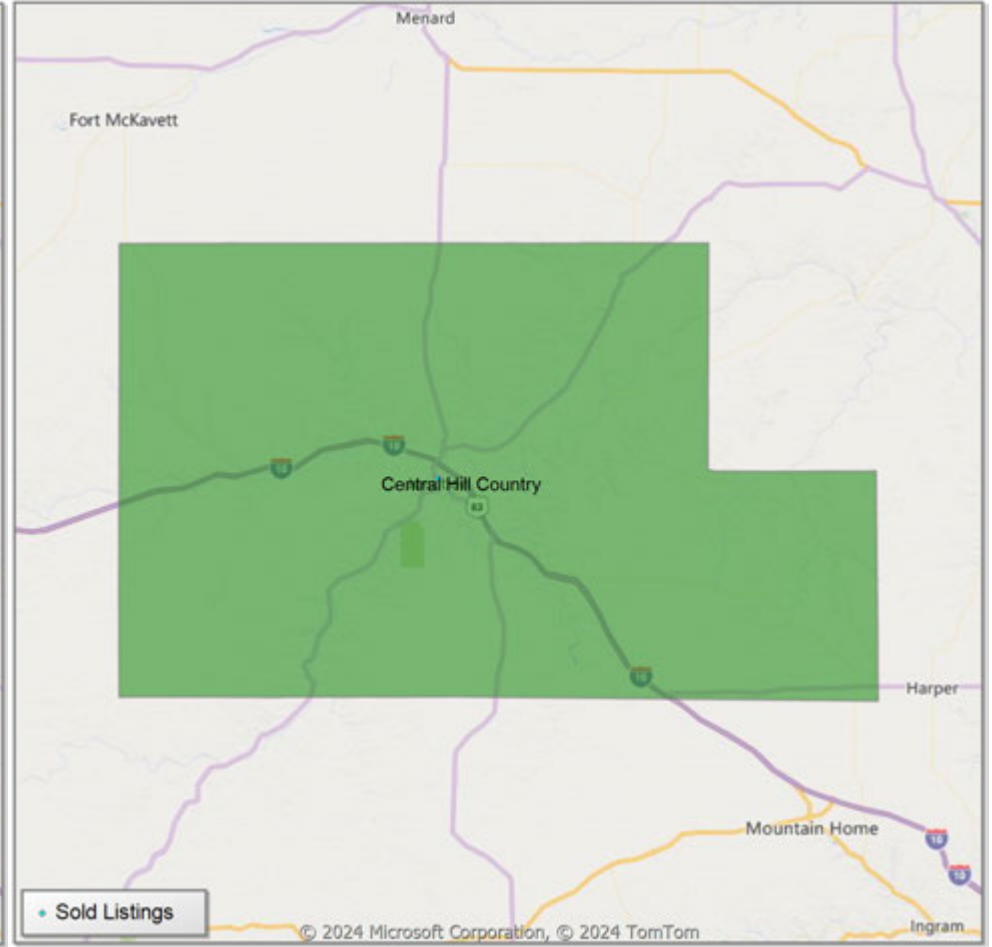
\*\* Residential includes Single Family, Condominium and Townhouse.

**Comparison By Local Market Area\* in Kimble County**

**Residential\*\* Closed Sales  
YoY Percentage Change**



**Residential\*\* Avg Close Price Per SqFt  
YoY Percentage Change**

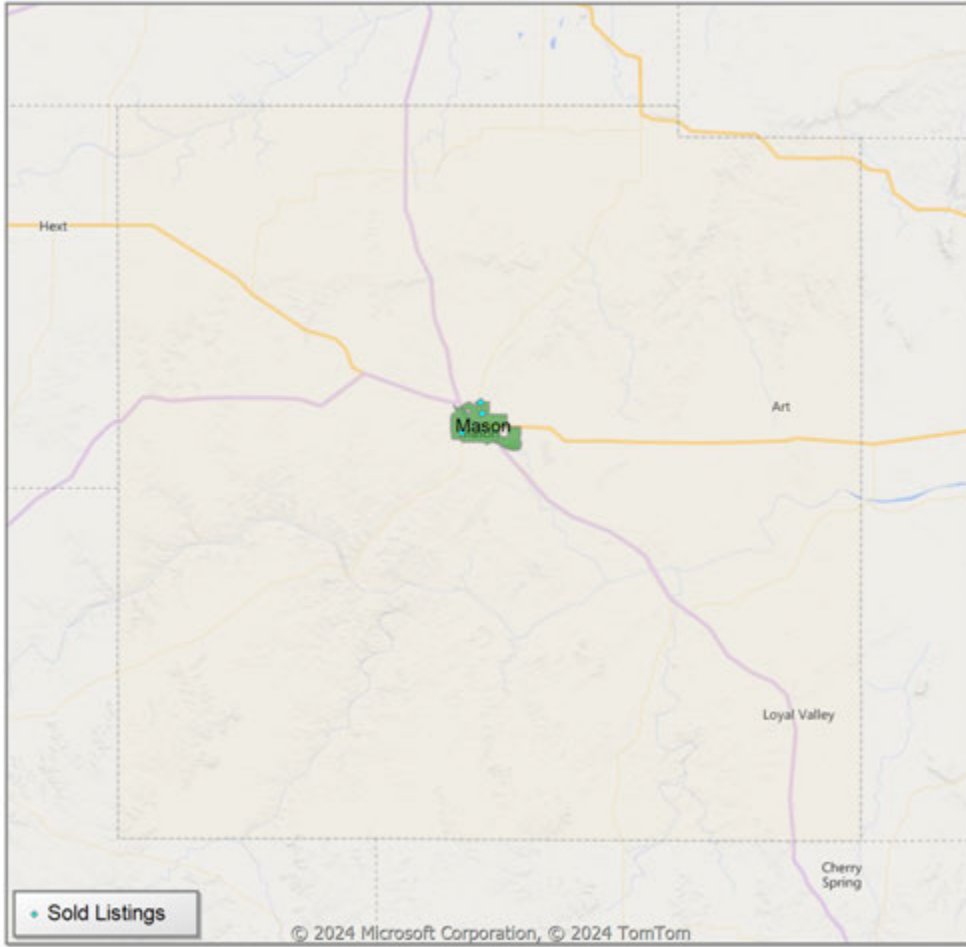


\* Custom Defined Market

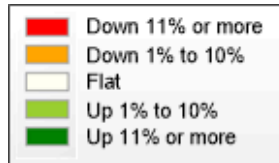
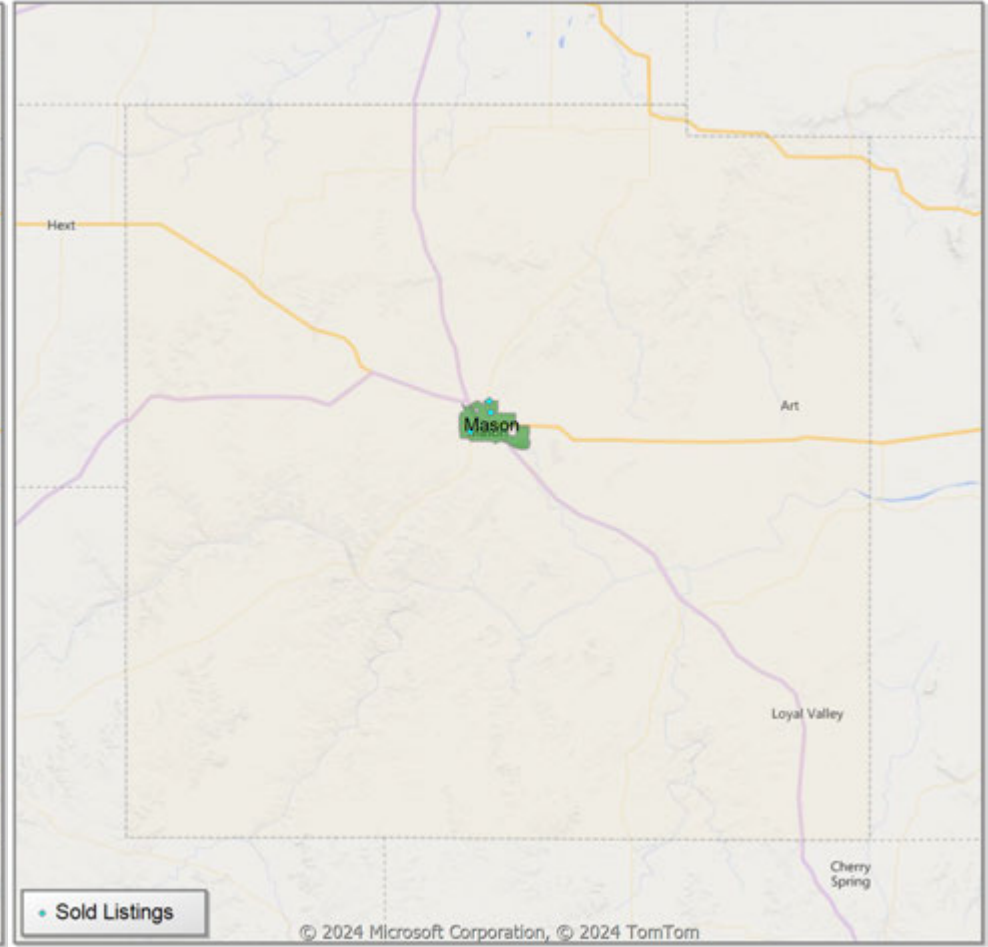
\*\* Residential includes Single Family, Condominium and Townhouse.

**Comparison By Local Market Area\* in Mason County**

**Residential\*\* Closed Sales  
YoY Percentage Change**



**Residential\*\* Avg Close Price Per SqFt  
YoY Percentage Change**

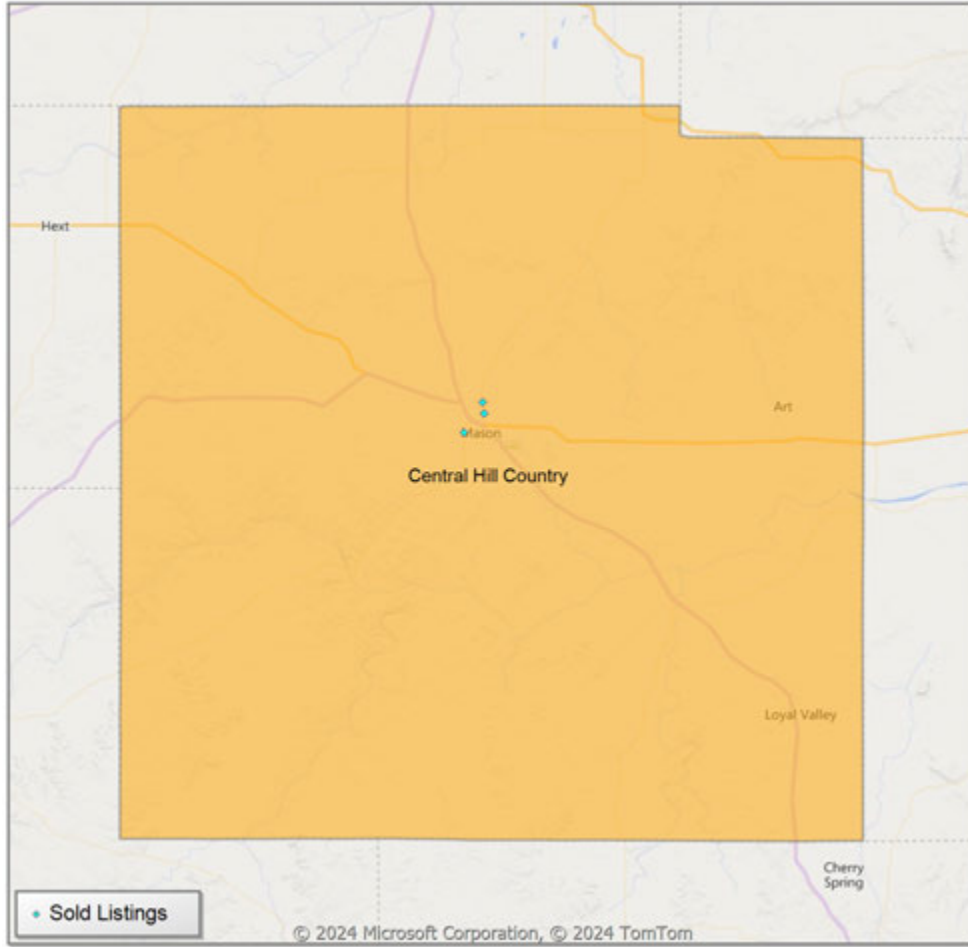


\* Census Place Group

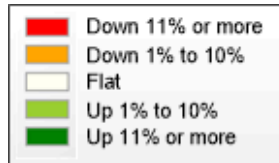
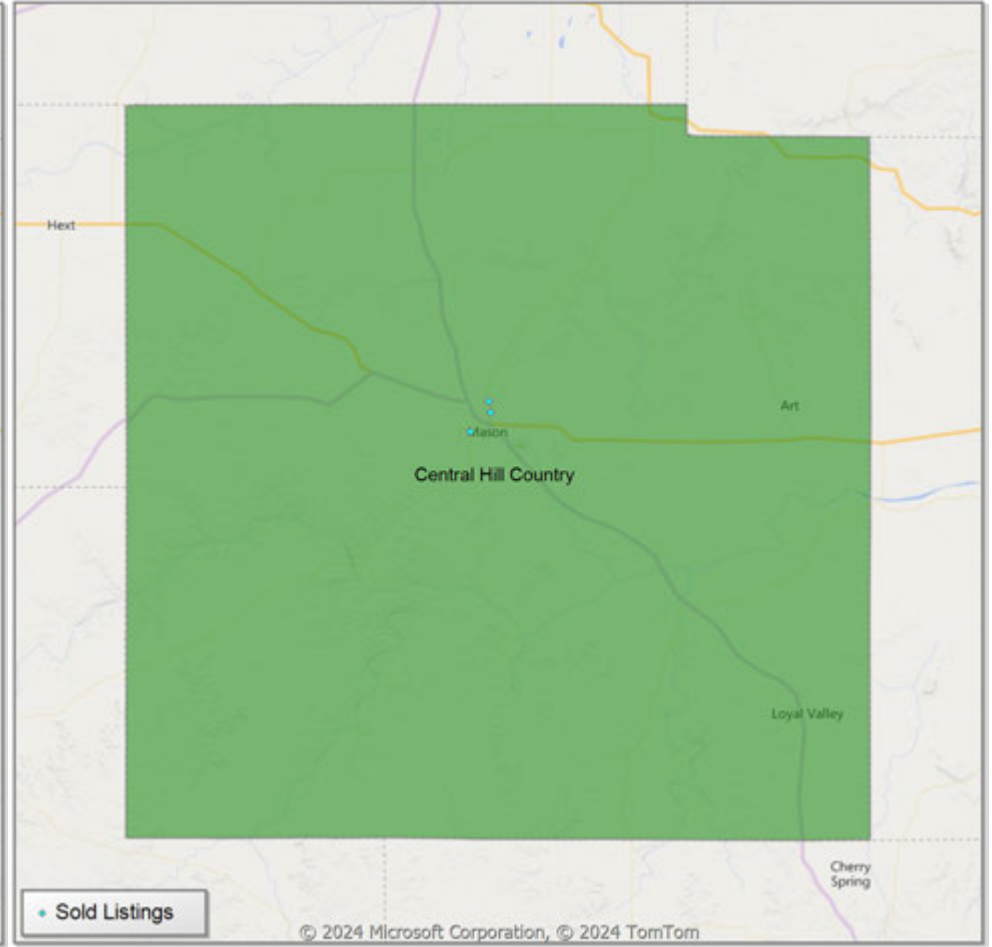
\*\* Residential includes Single Family, Condominium and Townhouse.

**Comparison By Local Market Area\* in Mason County**

**Residential\*\* Closed Sales  
YoY Percentage Change**



**Residential\*\* Avg Close Price Per SqFt  
YoY Percentage Change**



\* Custom Defined Market

\*\* Residential includes Single Family, Condominium and Townhouse.



Market Analysis By Local Market Area\*: Blanco

Property Type	Closed Sales**	YoY%	Dollar Volume	YoY%	Average Price	YoY%	Median Price	YoY%	Price/Sqft	YoY%	DOM	New Listings	Active Listings	Pending Sales	Months Inventory	Close To OLP
<b>All(New and Existing)</b>																
Residential (SF/COND/TH)	-	-100.0%	-	-100.0%	-	-100.0%	-	-100.0%	-	-100.0%	-	5	19	-	12.0	0.0%
YTD:	2	-33.3%	\$528,500	-56.2%	\$264,250	-34.3%	\$264,250	-33.1%	\$226	-5.6%	9	15	15	2		99.5%
Single Family	-	-100.0%	-	-100.0%	-	-100.0%	-	-100.0%	-	-100.0%	-	5	19	-	12.0	0.0%
YTD:	2	-33.3%	\$528,500	-56.2%	\$264,250	-34.3%	\$264,250	-33.1%	\$226	-5.6%	9	15	15	2		99.5%
Townhouse	-	0.0%	-	0.0%	-	0.0%	-	0.0%	-	0.0%	-	-	-	-	-	0.0%
YTD:	-	0.0%	-	0.0%	-	0.0%	-	0.0%	-	0.0%	-	-	-	-	-	0.0%
Condominium	-	0.0%	-	0.0%	-	0.0%	-	0.0%	-	0.0%	-	-	-	-	-	0.0%
YTD:	-	0.0%	-	0.0%	-	0.0%	-	0.0%	-	0.0%	-	-	-	-	-	0.0%
<b>Existing Home</b>																
Residential (SF/COND/TH)	-	-100.0%	-	-100.0%	-	-100.0%	-	-100.0%	-	-100.0%	-	4	16	-	11.3	0.0%
YTD:	2	-33.3%	\$528,500	-56.2%	\$264,250	-34.3%	\$264,250	-33.1%	\$226	-5.6%	9	12	14	2		99.5%
Single Family	-	-100.0%	-	-100.0%	-	-100.0%	-	-100.0%	-	-100.0%	-	4	16	-	11.3	0.0%
YTD:	2	-33.3%	\$528,500	-56.2%	\$264,250	-34.3%	\$264,250	-33.1%	\$226	-5.6%	9	12	14	2		99.5%
Townhouse	-	0.0%	-	0.0%	-	0.0%	-	0.0%	-	0.0%	-	-	-	-	-	0.0%
YTD:	-	0.0%	-	0.0%	-	0.0%	-	0.0%	-	0.0%	-	-	-	-	-	0.0%
Condominium	-	0.0%	-	0.0%	-	0.0%	-	0.0%	-	0.0%	-	-	-	-	-	0.0%
YTD:	-	0.0%	-	0.0%	-	0.0%	-	0.0%	-	0.0%	-	-	-	-	-	0.0%
<b>New Construction</b>																
Residential (SF/COND/TH)	-	0.0%	-	0.0%	-	0.0%	-	0.0%	-	0.0%	-	1	3	-	18.0	0.0%
YTD:	-	0.0%	-	0.0%	-	0.0%	-	0.0%	-	0.0%	-	3	2	-		0.0%
Single Family	-	0.0%	-	0.0%	-	0.0%	-	0.0%	-	0.0%	-	1	3	-	18.0	0.0%
YTD:	-	0.0%	-	0.0%	-	0.0%	-	0.0%	-	0.0%	-	3	2	-		0.0%
Townhouse	-	0.0%	-	0.0%	-	0.0%	-	0.0%	-	0.0%	-	-	-	-	-	0.0%
YTD:	-	0.0%	-	0.0%	-	0.0%	-	0.0%	-	0.0%	-	-	-	-	-	0.0%
Condominium	-	0.0%	-	0.0%	-	0.0%	-	0.0%	-	0.0%	-	-	-	-	-	0.0%
YTD:	-	0.0%	-	0.0%	-	0.0%	-	0.0%	-	0.0%	-	-	-	-	-	0.0%

\* Local Market Area Code: 91; Type: Census Place Group  
 \*\* Closed Sale counts for most recent 3 months are Preliminary.

Market Analysis By Local Market Area\*: Central Hill Country

Property Type	Closed Sales**	YoY%	Dollar Volume	YoY%	Average Price	YoY%	Median Price	YoY%	Price/Sqft	YoY%	DOM	New Listings	Active Listings	Pending Sales	Months Inventory	Close To OLP
<b>All(New and Existing)</b>																
Residential (SF/COND/TH)	51	-1.9%	\$32,491,146	-7.5%	\$637,081	-5.7%	\$450,000	-18.9%	\$346	12.2%	156	121	521	46	10.9	92.1%
YTD:	172	4.9%	\$104,402,054	2.8%	\$606,989	-2.0%	\$475,000	-7.8%	\$365	23.4%	136	441	483	137		91.8%
Single Family	51	-1.9%	\$32,491,146	-7.5%	\$637,081	-5.7%	\$450,000	-18.9%	\$346	12.2%	156	119	503	46	10.6	92.1%
YTD:	172	4.9%	\$104,402,054	2.8%	\$606,989	-2.0%	\$475,000	-7.8%	\$365	23.4%	136	427	460	137		91.8%
Townhouse	-	0.0%	-	0.0%	-	0.0%	-	0.0%	-	0.0%	-	-	-	-	-	0.0%
YTD:	-	0.0%	-	0.0%	-	0.0%	-	0.0%	-	0.0%	-	-	-	-	-	0.0%
Condominium	-	0.0%	-	0.0%	-	0.0%	-	0.0%	-	0.0%	-	2	18	-	216.0	0.0%
YTD:	-	0.0%	-	0.0%	-	0.0%	-	0.0%	-	0.0%	-	14	22	-		0.0%
<b>Existing Home</b>																
Residential (SF/COND/TH)	40	-4.8%	\$27,964,442	-6.1%	\$699,111	-1.4%	\$467,500	-25.7%	\$376	18.1%	144	111	423	31	10.9	92.4%
YTD:	144	15.2%	\$91,409,637	13.5%	\$634,789	-1.4%	\$485,000	-11.7%	\$387	27.4%	139	358	374	100		91.7%
Single Family	40	-4.8%	\$27,964,442	-6.1%	\$699,111	-1.4%	\$467,500	-25.7%	\$376	18.1%	144	109	412	31	10.7	92.4%
YTD:	144	15.2%	\$91,409,637	13.5%	\$634,789	-1.4%	\$485,000	-11.7%	\$387	27.4%	139	351	359	100		91.7%
Townhouse	-	0.0%	-	0.0%	-	0.0%	-	0.0%	-	0.0%	-	-	-	-	-	0.0%
YTD:	-	0.0%	-	0.0%	-	0.0%	-	0.0%	-	0.0%	-	-	-	-	-	0.0%
Condominium	-	0.0%	-	0.0%	-	0.0%	-	0.0%	-	0.0%	-	2	11	-	132.0	0.0%
YTD:	-	0.0%	-	0.0%	-	0.0%	-	0.0%	-	0.0%	-	7	15	-		0.0%
<b>New Construction</b>																
Residential (SF/COND/TH)	11	10.0%	\$4,415,050	-17.6%	\$401,368	-25.0%	\$388,500	-19.1%	\$230	-13.0%	199	10	98	15	10.9	90.9%
YTD:	28	-28.2%	\$12,930,637	-38.5%	\$461,808	-14.3%	\$430,000	-12.0%	\$244	-9.6%	120	83	108	37		92.1%
Single Family	11	10.0%	\$4,415,050	-17.6%	\$401,368	-25.0%	\$388,500	-19.1%	\$230	-13.0%	199	10	91	15	10.1	90.9%
YTD:	28	-28.2%	\$12,930,637	-38.5%	\$461,808	-14.3%	\$430,000	-12.0%	\$244	-9.6%	120	76	101	37		92.1%
Townhouse	-	0.0%	-	0.0%	-	0.0%	-	0.0%	-	0.0%	-	-	-	-	-	0.0%
YTD:	-	0.0%	-	0.0%	-	0.0%	-	0.0%	-	0.0%	-	-	-	-	-	0.0%
Condominium	-	0.0%	-	0.0%	-	0.0%	-	0.0%	-	0.0%	-	-	7	-	-	0.0%
YTD:	-	0.0%	-	0.0%	-	0.0%	-	0.0%	-	0.0%	-	7	7	-		0.0%

\* Local Market Area Code: CHC; Type: Custom Defined Market

\*\* Closed Sale counts for most recent 3 months are Preliminary.

Market Analysis By Local Market Area\*: Fredericksburg

Property Type	Closed Sales**	YoY%	Dollar Volume	YoY%	Average Price	YoY%	Median Price	YoY%	Price/Sqft	YoY%	DOM	New Listings	Active Listings	Pending Sales	Months Inventory	Close To OLP
<b>All(New and Existing)</b>																
Residential (SF/COND/TH)	25	38.9%	\$12,948,143	24.3%	\$517,926	-10.5%	\$450,000	-12.6%	\$302	-12.8%	125	45	158	28	8.7	91.2%
YTD:	77	48.1%	\$41,080,730	28.2%	\$533,516	-13.4%	\$472,750	-14.4%	\$340	1.1%	132	155	147	53		91.2%
Single Family	25	38.9%	\$12,948,143	24.3%	\$517,926	-10.5%	\$450,000	-12.6%	\$302	-12.8%	125	45	151	28	8.4	91.2%
YTD:	77	48.1%	\$41,080,730	28.2%	\$533,516	-13.4%	\$472,750	-14.4%	\$340	1.1%	132	147	139	53		91.2%
Townhouse	-	0.0%	-	0.0%	-	0.0%	-	0.0%	-	0.0%	-	-	-	-	-	0.0%
YTD:	-	0.0%	-	0.0%	-	0.0%	-	0.0%	-	0.0%	-	-	-	-	-	0.0%
Condominium	-	0.0%	-	0.0%	-	0.0%	-	0.0%	-	0.0%	-	-	7	-	-	0.0%
YTD:	-	0.0%	-	0.0%	-	0.0%	-	0.0%	-	0.0%	-	8	7	-	-	0.0%
<b>Existing Home</b>																
Residential (SF/COND/TH)	21	40.0%	\$11,451,531	29.6%	\$545,311	-7.4%	\$460,000	-3.2%	\$318	-11.9%	129	40	140	15	8.7	92.5%
YTD:	66	40.4%	\$36,939,459	27.3%	\$559,689	-9.4%	\$485,500	-11.6%	\$359	4.6%	142	126	121	32		91.9%
Single Family	20	33.3%	\$10,906,220	23.4%	\$545,311	-7.4%	\$460,000	-3.2%	\$318	-11.9%	129	40	140	15	8.9	92.5%
YTD:	65	38.3%	\$36,379,770	25.3%	\$559,689	-9.4%	\$485,500	-11.6%	\$359	4.6%	142	125	120	32		91.9%
Townhouse	-	0.0%	-	0.0%	-	0.0%	-	0.0%	-	0.0%	-	-	-	-	-	0.0%
YTD:	-	0.0%	-	0.0%	-	0.0%	-	0.0%	-	0.0%	-	-	-	-	-	0.0%
Condominium	-	0.0%	-	0.0%	-	0.0%	-	0.0%	-	0.0%	-	-	-	-	-	0.0%
YTD:	-	0.0%	-	0.0%	-	0.0%	-	0.0%	-	0.0%	-	1	1	-	-	0.0%
<b>New Construction</b>																
Residential (SF/COND/TH)	4	33.3%	\$1,523,997	-3.5%	\$380,999	-27.7%	\$328,999	-40.7%	\$219	-18.6%	102	5	18	13	8.6	84.6%
YTD:	11	120.0%	\$4,167,444	38.1%	\$378,859	-37.2%	\$341,999	-38.4%	\$228	-16.5%	74	29	26	21		87.2%
Single Family	4	33.3%	\$1,523,997	-3.5%	\$380,999	-27.7%	\$328,999	-40.7%	\$219	-18.6%	102	5	11	13	5.3	84.6%
YTD:	11	120.0%	\$4,167,444	38.1%	\$378,859	-37.2%	\$341,999	-38.4%	\$228	-16.5%	74	22	18	21		87.2%
Townhouse	-	0.0%	-	0.0%	-	0.0%	-	0.0%	-	0.0%	-	-	-	-	-	0.0%
YTD:	-	0.0%	-	0.0%	-	0.0%	-	0.0%	-	0.0%	-	-	-	-	-	0.0%
Condominium	-	0.0%	-	0.0%	-	0.0%	-	0.0%	-	0.0%	-	-	7	-	-	0.0%
YTD:	-	0.0%	-	0.0%	-	0.0%	-	0.0%	-	0.0%	-	7	7	-	-	0.0%

\* Local Market Area Code: 335; Type: Census Place Group  
 \*\* Closed Sale counts for most recent 3 months are Preliminary.

Market Analysis By Local Market Area\*: Harper

Property Type	Closed Sales**	YoY%	Dollar Volume	YoY%	Average Price	YoY%	Median Price	YoY%	Price/Sqft	YoY%	DOM	New Listings	Active Listings	Pending Sales	Months Inventory	Close To OLP
<b>All(New and Existing)</b>																
Residential (SF/COND/TH)	1	0.0%	\$430,000	40.5%	\$430,000	40.5%	\$430,000	40.5%	\$280	38.9%	403	5	19	2	8.8	0.0%
YTD:	4	-33.3%	\$1,672,000	-28.1%	\$418,000	7.9%	\$377,500	2.3%	\$238	-4.6%	120	19	22	6		95.8%
Single Family	1	0.0%	\$430,000	40.5%	\$430,000	40.5%	\$430,000	40.5%	\$280	38.9%	403	5	19	2	8.8	0.0%
YTD:	4	-33.3%	\$1,672,000	-28.1%	\$418,000	7.9%	\$377,500	2.3%	\$238	-4.6%	120	19	22	6		95.8%
Townhouse	-	0.0%	-	0.0%	-	0.0%	-	0.0%	-	0.0%	-	-	-	-	-	0.0%
YTD:	-	0.0%	-	0.0%	-	0.0%	-	0.0%	-	0.0%	-	-	-	-	-	0.0%
Condominium	-	0.0%	-	0.0%	-	0.0%	-	0.0%	-	0.0%	-	-	-	-	-	0.0%
YTD:	-	0.0%	-	0.0%	-	0.0%	-	0.0%	-	0.0%	-	-	-	-	-	0.0%
<b>Existing Home</b>																
Residential (SF/COND/TH)	1	0.0%	\$430,000	40.5%	\$430,000	40.5%	\$430,000	40.5%	\$280	38.9%	403	5	19	2	12.0	0.0%
YTD:	4	0.0%	\$1,672,000	15.6%	\$418,000	15.6%	\$377,500	10.9%	\$238	3.4%	120	19	21	6		95.8%
Single Family	1	0.0%	\$430,000	40.5%	\$430,000	40.5%	\$430,000	40.5%	\$280	38.9%	403	5	19	2	12.0	0.0%
YTD:	4	0.0%	\$1,672,000	15.6%	\$418,000	15.6%	\$377,500	10.9%	\$238	3.4%	120	19	21	6		95.8%
Townhouse	-	0.0%	-	0.0%	-	0.0%	-	0.0%	-	0.0%	-	-	-	-	-	0.0%
YTD:	-	0.0%	-	0.0%	-	0.0%	-	0.0%	-	0.0%	-	-	-	-	-	0.0%
Condominium	-	0.0%	-	0.0%	-	0.0%	-	0.0%	-	0.0%	-	-	-	-	-	0.0%
YTD:	-	0.0%	-	0.0%	-	0.0%	-	0.0%	-	0.0%	-	-	-	-	-	0.0%
<b>New Construction</b>																
Residential (SF/COND/TH)	-	0.0%	-	0.0%	-	0.0%	-	0.0%	-	0.0%	-	-	-	-	-	0.0%
YTD:	-	-100.0%	-	-100.0%	-	-100.0%	-	-100.0%	-	-100.0%	-	-	2	-		0.0%
Single Family	-	0.0%	-	0.0%	-	0.0%	-	0.0%	-	0.0%	-	-	-	-	-	0.0%
YTD:	-	-100.0%	-	-100.0%	-	-100.0%	-	-100.0%	-	-100.0%	-	-	2	-		0.0%
Townhouse	-	0.0%	-	0.0%	-	0.0%	-	0.0%	-	0.0%	-	-	-	-	-	0.0%
YTD:	-	0.0%	-	0.0%	-	0.0%	-	0.0%	-	0.0%	-	-	-	-	-	0.0%
Condominium	-	0.0%	-	0.0%	-	0.0%	-	0.0%	-	0.0%	-	-	-	-	-	0.0%
YTD:	-	0.0%	-	0.0%	-	0.0%	-	0.0%	-	0.0%	-	-	-	-	-	0.0%

\* Local Market Area Code: 404; Type: Census Place Group  
 \*\* Closed Sale counts for most recent 3 months are Preliminary.

Market Analysis By Local Market Area\*: Johnson City

Property Type	Closed Sales**	YoY%	Dollar Volume	YoY%	Average Price	YoY%	Median Price	YoY%	Price/Sqft	YoY%	DOM	New Listings	Active Listings	Pending Sales	Months Inventory	Close To OLP
<b>All(New and Existing)</b>																
Residential (SF/COND/TH)	2	100.0%	\$1,225,000	231.1%	\$612,500	65.5%	\$612,500	65.5%	\$296	24.0%	15	2	10	2	5.0	94.2%
YTD:	7	40.0%	\$3,172,000	72.8%	\$453,143	23.4%	\$375,000	-0.3%	\$267	9.6%	71	9	7	7		90.5%
Single Family	2	100.0%	\$1,225,000	231.1%	\$612,500	65.5%	\$612,500	65.5%	\$296	24.0%	15	2	10	2	5.0	94.2%
YTD:	7	40.0%	\$3,172,000	72.8%	\$453,143	23.4%	\$375,000	-0.3%	\$267	9.6%	71	9	7	7		90.5%
Townhouse	-	0.0%	-	0.0%	-	0.0%	-	0.0%	-	0.0%	-	-	-	-	-	0.0%
YTD:	-	0.0%	-	0.0%	-	0.0%	-	0.0%	-	0.0%	-	-	-	-	-	0.0%
Condominium	-	0.0%	-	0.0%	-	0.0%	-	0.0%	-	0.0%	-	-	-	-	-	0.0%
YTD:	-	0.0%	-	0.0%	-	0.0%	-	0.0%	-	0.0%	-	-	-	-	-	0.0%
<b>Existing Home</b>																
Residential (SF/COND/TH)	2	100.0%	\$1,225,000	231.1%	\$612,500	65.5%	\$612,500	65.5%	\$296	24.0%	15	2	8	2	4.2	94.2%
YTD:	7	40.0%	\$3,172,000	72.8%	\$453,143	23.4%	\$375,000	-0.3%	\$267	9.6%	71	7	6	7		90.5%
Single Family	2	100.0%	\$1,225,000	231.1%	\$612,500	65.5%	\$612,500	65.5%	\$296	24.0%	15	2	8	2	4.2	94.2%
YTD:	7	40.0%	\$3,172,000	72.8%	\$453,143	23.4%	\$375,000	-0.3%	\$267	9.6%	71	7	6	7		90.5%
Townhouse	-	0.0%	-	0.0%	-	0.0%	-	0.0%	-	0.0%	-	-	-	-	-	0.0%
YTD:	-	0.0%	-	0.0%	-	0.0%	-	0.0%	-	0.0%	-	-	-	-	-	0.0%
Condominium	-	0.0%	-	0.0%	-	0.0%	-	0.0%	-	0.0%	-	-	-	-	-	0.0%
YTD:	-	0.0%	-	0.0%	-	0.0%	-	0.0%	-	0.0%	-	-	-	-	-	0.0%
<b>New Construction</b>																
Residential (SF/COND/TH)	-	0.0%	-	0.0%	-	0.0%	-	0.0%	-	0.0%	-	-	2	-	24.0	0.0%
YTD:	-	0.0%	-	0.0%	-	0.0%	-	0.0%	-	0.0%	-	2	2	-		0.0%
Single Family	-	0.0%	-	0.0%	-	0.0%	-	0.0%	-	0.0%	-	-	2	-	24.0	0.0%
YTD:	-	0.0%	-	0.0%	-	0.0%	-	0.0%	-	0.0%	-	2	2	-		0.0%
Townhouse	-	0.0%	-	0.0%	-	0.0%	-	0.0%	-	0.0%	-	-	-	-	-	0.0%
YTD:	-	0.0%	-	0.0%	-	0.0%	-	0.0%	-	0.0%	-	-	-	-	-	0.0%
Condominium	-	0.0%	-	0.0%	-	0.0%	-	0.0%	-	0.0%	-	-	-	-	-	0.0%
YTD:	-	0.0%	-	0.0%	-	0.0%	-	0.0%	-	0.0%	-	-	-	-	-	0.0%

\* Local Market Area Code: 484; Type: Census Place Group  
 \*\* Closed Sale counts for most recent 3 months are Preliminary.

Market Analysis By Local Market Area\*: Junction

Property Type	Closed Sales**	YoY%	Dollar Volume	YoY%	Average Price	YoY%	Median Price	YoY%	Price/Sqft	YoY%	DOM	New Listings	Active Listings	Pending Sales	Months Inventory	Close To OLP
<b>All(New and Existing)</b>																
Residential (SF/COND/TH)	1	0.0%	\$140,000	-35.3%	\$140,000	-35.3%	\$140,000	-35.3%	\$126	-14.9%	16	1	4	1	8.0	0.0%
YTD:	2	0.0%	\$260,000	-9.2%	\$130,000	-9.2%	\$130,000	-9.2%	\$152	62.3%	69	6	3	3		92.4%
Single Family	1	0.0%	\$140,000	-35.3%	\$140,000	-35.3%	\$140,000	-35.3%	\$126	-14.9%	16	1	4	1	8.0	0.0%
YTD:	2	0.0%	\$260,000	-9.2%	\$130,000	-9.2%	\$130,000	-9.2%	\$152	62.3%	69	6	3	3		92.4%
Townhouse	-	0.0%	-	0.0%	-	0.0%	-	0.0%	-	0.0%	-	-	-	-	-	0.0%
YTD:	-	0.0%	-	0.0%	-	0.0%	-	0.0%	-	0.0%	-	-	-	-	-	0.0%
Condominium	-	0.0%	-	0.0%	-	0.0%	-	0.0%	-	0.0%	-	-	-	-	-	0.0%
YTD:	-	0.0%	-	0.0%	-	0.0%	-	0.0%	-	0.0%	-	-	-	-	-	0.0%
<b>Existing Home</b>																
Residential (SF/COND/TH)	1	0.0%	\$140,000	-35.3%	\$140,000	-35.3%	\$140,000	-35.3%	\$126	-14.9%	16	1	4	1	8.0	0.0%
YTD:	2	0.0%	\$260,000	-9.2%	\$130,000	-9.2%	\$130,000	-9.2%	\$152	62.3%	69	6	3	3		92.4%
Single Family	1	0.0%	\$140,000	-35.3%	\$140,000	-35.3%	\$140,000	-35.3%	\$126	-14.9%	16	1	4	1	8.0	0.0%
YTD:	2	0.0%	\$260,000	-9.2%	\$130,000	-9.2%	\$130,000	-9.2%	\$152	62.3%	69	6	3	3		92.4%
Townhouse	-	0.0%	-	0.0%	-	0.0%	-	0.0%	-	0.0%	-	-	-	-	-	0.0%
YTD:	-	0.0%	-	0.0%	-	0.0%	-	0.0%	-	0.0%	-	-	-	-	-	0.0%
Condominium	-	0.0%	-	0.0%	-	0.0%	-	0.0%	-	0.0%	-	-	-	-	-	0.0%
YTD:	-	0.0%	-	0.0%	-	0.0%	-	0.0%	-	0.0%	-	-	-	-	-	0.0%
<b>New Construction</b>																
Residential (SF/COND/TH)	-	0.0%	-	0.0%	-	0.0%	-	0.0%	-	0.0%	-	-	-	-	-	0.0%
YTD:	-	0.0%	-	0.0%	-	0.0%	-	0.0%	-	0.0%	-	-	-	-	-	0.0%
Single Family	-	0.0%	-	0.0%	-	0.0%	-	0.0%	-	0.0%	-	-	-	-	-	0.0%
YTD:	-	0.0%	-	0.0%	-	0.0%	-	0.0%	-	0.0%	-	-	-	-	-	0.0%
Townhouse	-	0.0%	-	0.0%	-	0.0%	-	0.0%	-	0.0%	-	-	-	-	-	0.0%
YTD:	-	0.0%	-	0.0%	-	0.0%	-	0.0%	-	0.0%	-	-	-	-	-	0.0%
Condominium	-	0.0%	-	0.0%	-	0.0%	-	0.0%	-	0.0%	-	-	-	-	-	0.0%
YTD:	-	0.0%	-	0.0%	-	0.0%	-	0.0%	-	0.0%	-	-	-	-	-	0.0%

\* Local Market Area Code: 490; Type: Census Place Group  
 \*\* Closed Sale counts for most recent 3 months are Preliminary.

Market Analysis By Local Market Area\*: Mason

Property Type	Closed Sales**	YoY%	Dollar Volume	YoY%	Average Price	YoY%	Median Price	YoY%	Price/Sqft	YoY%	DOM	New Listings	Active Listings	Pending Sales	Months Inventory	Close To OLP
<b>All(New and Existing)</b>																
Residential (SF/COND/TH)	3	200.0%	\$868,500	426.4%	\$289,500	75.5%	\$244,500	48.2%	\$226	129.7%	166	5	20	-	9.2	95.3%
YTD:	6	-14.3%	\$1,469,500	0.9%	\$244,917	17.7%	\$209,750	4.9%	\$178	9.2%	112	14	16	2		94.2%
Single Family	3	200.0%	\$868,500	426.4%	\$289,500	75.5%	\$244,500	48.2%	\$226	129.7%	166	5	20	-	9.2	95.3%
YTD:	6	-14.3%	\$1,469,500	0.9%	\$244,917	17.7%	\$209,750	4.9%	\$178	9.2%	112	14	16	2		94.2%
Townhouse	-	0.0%	-	0.0%	-	0.0%	-	0.0%	-	0.0%	-	-	-	-	-	0.0%
YTD:	-	0.0%	-	0.0%	-	0.0%	-	0.0%	-	0.0%	-	-	-	-	-	0.0%
Condominium	-	0.0%	-	0.0%	-	0.0%	-	0.0%	-	0.0%	-	-	-	-	-	0.0%
YTD:	-	0.0%	-	0.0%	-	0.0%	-	0.0%	-	0.0%	-	-	-	-	-	0.0%
<b>Existing Home</b>																
Residential (SF/COND/TH)	3	200.0%	\$868,500	426.4%	\$289,500	75.5%	\$244,500	48.2%	\$226	129.7%	166	5	20	-	9.2	95.3%
YTD:	6	-14.3%	\$1,469,500	0.9%	\$244,917	17.7%	\$209,750	4.9%	\$178	9.2%	112	14	16	2		94.2%
Single Family	3	200.0%	\$868,500	426.4%	\$289,500	75.5%	\$244,500	48.2%	\$226	129.7%	166	5	20	-	9.2	95.3%
YTD:	6	-14.3%	\$1,469,500	0.9%	\$244,917	17.7%	\$209,750	4.9%	\$178	9.2%	112	14	16	2		94.2%
Townhouse	-	0.0%	-	0.0%	-	0.0%	-	0.0%	-	0.0%	-	-	-	-	-	0.0%
YTD:	-	0.0%	-	0.0%	-	0.0%	-	0.0%	-	0.0%	-	-	-	-	-	0.0%
Condominium	-	0.0%	-	0.0%	-	0.0%	-	0.0%	-	0.0%	-	-	-	-	-	0.0%
YTD:	-	0.0%	-	0.0%	-	0.0%	-	0.0%	-	0.0%	-	-	-	-	-	0.0%
<b>New Construction</b>																
Residential (SF/COND/TH)	-	0.0%	-	0.0%	-	0.0%	-	0.0%	-	0.0%	-	-	-	-	-	0.0%
YTD:	-	0.0%	-	0.0%	-	0.0%	-	0.0%	-	0.0%	-	-	-	-	-	0.0%
Single Family	-	0.0%	-	0.0%	-	0.0%	-	0.0%	-	0.0%	-	-	-	-	-	0.0%
YTD:	-	0.0%	-	0.0%	-	0.0%	-	0.0%	-	0.0%	-	-	-	-	-	0.0%
Townhouse	-	0.0%	-	0.0%	-	0.0%	-	0.0%	-	0.0%	-	-	-	-	-	0.0%
YTD:	-	0.0%	-	0.0%	-	0.0%	-	0.0%	-	0.0%	-	-	-	-	-	0.0%
Condominium	-	0.0%	-	0.0%	-	0.0%	-	0.0%	-	0.0%	-	-	-	-	-	0.0%
YTD:	-	0.0%	-	0.0%	-	0.0%	-	0.0%	-	0.0%	-	-	-	-	-	0.0%

\* Local Market Area Code: 620; Type: Census Place Group  
 \*\* Closed Sale counts for most recent 3 months are Preliminary.

Market Analysis By Local Market Area\*: Round Mountain

Property Type	Closed Sales**	YoY%	Dollar Volume	YoY%	Average Price	YoY%	Median Price	YoY%	Price/Sqft	YoY%	DOM	New Listings	Active Listings	Pending Sales	Months Inventory	Close To OLP
<b>All(New and Existing)</b>																
Residential (SF/COND/TH)	-	0.0%	-	0.0%	-	0.0%	-	0.0%	-	0.0%	-	1	4	-	-	0.0%
YTD:	-	0.0%	-	0.0%	-	0.0%	-	0.0%	-	0.0%	-	3	3	-	-	0.0%
Single Family	-	0.0%	-	0.0%	-	0.0%	-	0.0%	-	0.0%	-	1	4	-	-	0.0%
YTD:	-	0.0%	-	0.0%	-	0.0%	-	0.0%	-	0.0%	-	3	3	-	-	0.0%
Townhouse	-	0.0%	-	0.0%	-	0.0%	-	0.0%	-	0.0%	-	-	-	-	-	0.0%
YTD:	-	0.0%	-	0.0%	-	0.0%	-	0.0%	-	0.0%	-	-	-	-	-	0.0%
Condominium	-	0.0%	-	0.0%	-	0.0%	-	0.0%	-	0.0%	-	-	-	-	-	0.0%
YTD:	-	0.0%	-	0.0%	-	0.0%	-	0.0%	-	0.0%	-	-	-	-	-	0.0%
<b>Existing Home</b>																
Residential (SF/COND/TH)	-	0.0%	-	0.0%	-	0.0%	-	0.0%	-	0.0%	-	-	3	-	-	0.0%
YTD:	-	0.0%	-	0.0%	-	0.0%	-	0.0%	-	0.0%	-	1	2	-	-	0.0%
Single Family	-	0.0%	-	0.0%	-	0.0%	-	0.0%	-	0.0%	-	-	3	-	-	0.0%
YTD:	-	0.0%	-	0.0%	-	0.0%	-	0.0%	-	0.0%	-	1	2	-	-	0.0%
Townhouse	-	0.0%	-	0.0%	-	0.0%	-	0.0%	-	0.0%	-	-	-	-	-	0.0%
YTD:	-	0.0%	-	0.0%	-	0.0%	-	0.0%	-	0.0%	-	-	-	-	-	0.0%
Condominium	-	0.0%	-	0.0%	-	0.0%	-	0.0%	-	0.0%	-	-	-	-	-	0.0%
YTD:	-	0.0%	-	0.0%	-	0.0%	-	0.0%	-	0.0%	-	-	-	-	-	0.0%
<b>New Construction</b>																
Residential (SF/COND/TH)	-	0.0%	-	0.0%	-	0.0%	-	0.0%	-	0.0%	-	1	1	-	-	0.0%
YTD:	-	0.0%	-	0.0%	-	0.0%	-	0.0%	-	0.0%	-	2	1	-	-	0.0%
Single Family	-	0.0%	-	0.0%	-	0.0%	-	0.0%	-	0.0%	-	1	1	-	-	0.0%
YTD:	-	0.0%	-	0.0%	-	0.0%	-	0.0%	-	0.0%	-	2	1	-	-	0.0%
Townhouse	-	0.0%	-	0.0%	-	0.0%	-	0.0%	-	0.0%	-	-	-	-	-	0.0%
YTD:	-	0.0%	-	0.0%	-	0.0%	-	0.0%	-	0.0%	-	-	-	-	-	0.0%
Condominium	-	0.0%	-	0.0%	-	0.0%	-	0.0%	-	0.0%	-	-	-	-	-	0.0%
YTD:	-	0.0%	-	0.0%	-	0.0%	-	0.0%	-	0.0%	-	-	-	-	-	0.0%

\* Local Market Area Code: 871; Type: Census Place Group  
 \*\* Closed Sale counts for most recent 3 months are Preliminary.



Market Analysis By Local Market Area\*: Stonewall

Property Type	Closed Sales**	YoY%	Dollar Volume	YoY%	Average Price	YoY%	Median Price	YoY%	Price/Sqft	YoY%	DOM	New Listings	Active Listings	Pending Sales	Months Inventory	Close To OLP
<b>All(New and Existing)</b>																
Residential (SF/COND/TH)	-	0.0%	-	0.0%	-	0.0%	-	0.0%	-	0.0%	-	1	4	-	12.0	0.0%
YTD:	2	100.0%	\$714,000	100.0%	\$357,000	100.0%	\$357,000	100.0%	\$424	100.0%	85	4	3	1		91.5%
Single Family	-	0.0%	-	0.0%	-	0.0%	-	0.0%	-	0.0%	-	1	4	-	12.0	0.0%
YTD:	2	100.0%	\$714,000	100.0%	\$357,000	100.0%	\$357,000	100.0%	\$424	100.0%	85	4	3	1		91.5%
Townhouse	-	0.0%	-	0.0%	-	0.0%	-	0.0%	-	0.0%	-	-	-	-	-	0.0%
YTD:	-	0.0%	-	0.0%	-	0.0%	-	0.0%	-	0.0%	-	-	-	-	-	0.0%
Condominium	-	0.0%	-	0.0%	-	0.0%	-	0.0%	-	0.0%	-	-	-	-	-	0.0%
YTD:	-	0.0%	-	0.0%	-	0.0%	-	0.0%	-	0.0%	-	-	-	-	-	0.0%
<b>Existing Home</b>																
Residential (SF/COND/TH)	-	0.0%	-	0.0%	-	0.0%	-	0.0%	-	0.0%	-	1	4	-	12.0	0.0%
YTD:	2	100.0%	\$714,000	100.0%	\$357,000	100.0%	\$357,000	100.0%	\$424	100.0%	85	4	3	1		91.5%
Single Family	-	0.0%	-	0.0%	-	0.0%	-	0.0%	-	0.0%	-	1	4	-	12.0	0.0%
YTD:	2	100.0%	\$714,000	100.0%	\$357,000	100.0%	\$357,000	100.0%	\$424	100.0%	85	4	3	1		91.5%
Townhouse	-	0.0%	-	0.0%	-	0.0%	-	0.0%	-	0.0%	-	-	-	-	-	0.0%
YTD:	-	0.0%	-	0.0%	-	0.0%	-	0.0%	-	0.0%	-	-	-	-	-	0.0%
Condominium	-	0.0%	-	0.0%	-	0.0%	-	0.0%	-	0.0%	-	-	-	-	-	0.0%
YTD:	-	0.0%	-	0.0%	-	0.0%	-	0.0%	-	0.0%	-	-	-	-	-	0.0%
<b>New Construction</b>																
Residential (SF/COND/TH)	-	0.0%	-	0.0%	-	0.0%	-	0.0%	-	0.0%	-	-	-	-	-	0.0%
YTD:	-	0.0%	-	0.0%	-	0.0%	-	0.0%	-	0.0%	-	-	-	-	-	0.0%
Single Family	-	0.0%	-	0.0%	-	0.0%	-	0.0%	-	0.0%	-	-	-	-	-	0.0%
YTD:	-	0.0%	-	0.0%	-	0.0%	-	0.0%	-	0.0%	-	-	-	-	-	0.0%
Townhouse	-	0.0%	-	0.0%	-	0.0%	-	0.0%	-	0.0%	-	-	-	-	-	0.0%
YTD:	-	0.0%	-	0.0%	-	0.0%	-	0.0%	-	0.0%	-	-	-	-	-	0.0%
Condominium	-	0.0%	-	0.0%	-	0.0%	-	0.0%	-	0.0%	-	-	-	-	-	0.0%
YTD:	-	0.0%	-	0.0%	-	0.0%	-	0.0%	-	0.0%	-	-	-	-	-	0.0%

\* Local Market Area Code: 966; Type: Census Place Group  
 \*\* Closed Sale counts for most recent 3 months are Preliminary.

